

Lamont-Doherty Earth Observatory
COLUMBIA UNIVERSITY | EARTH INSTITUTE



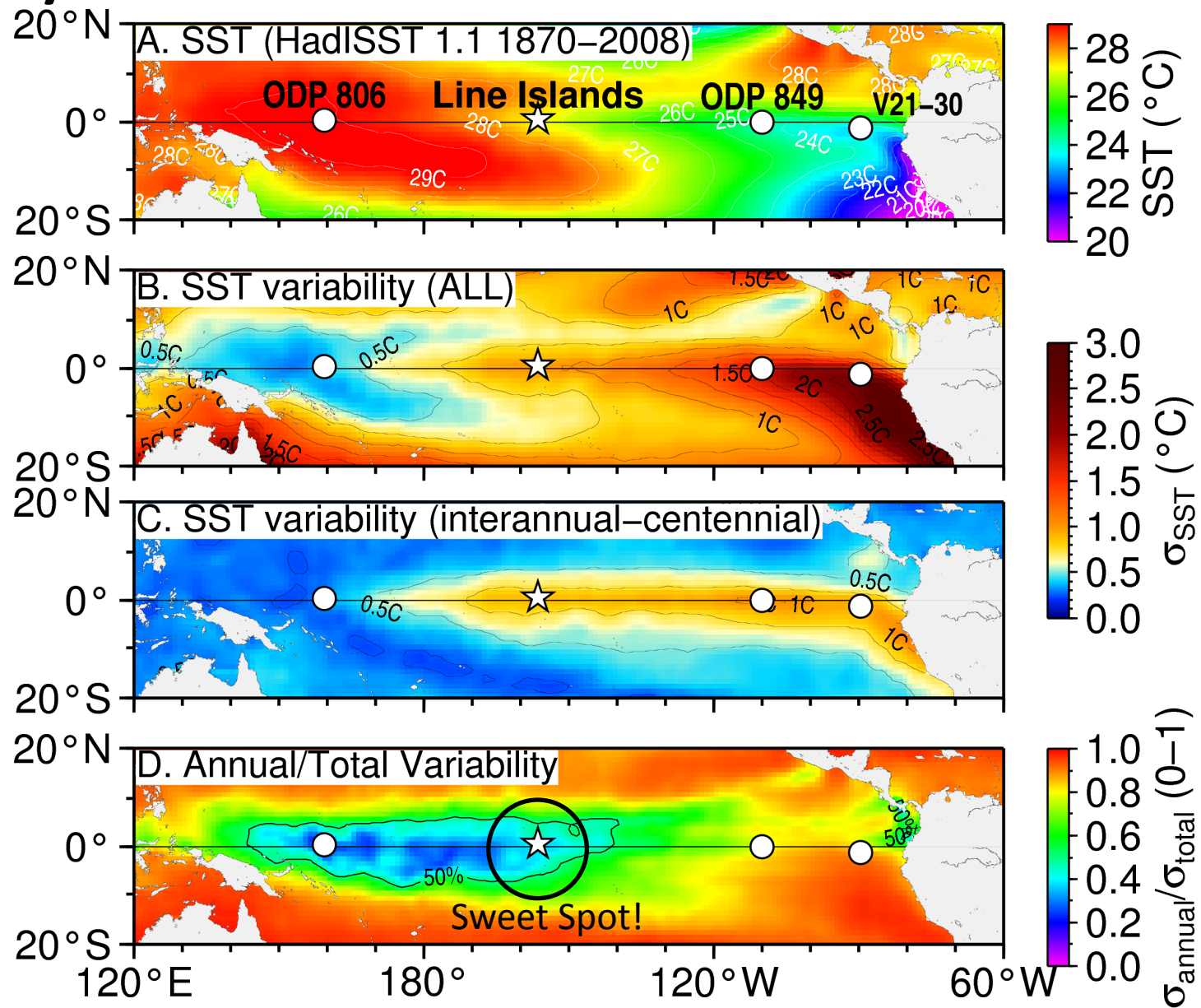
Cruise MGL12-08

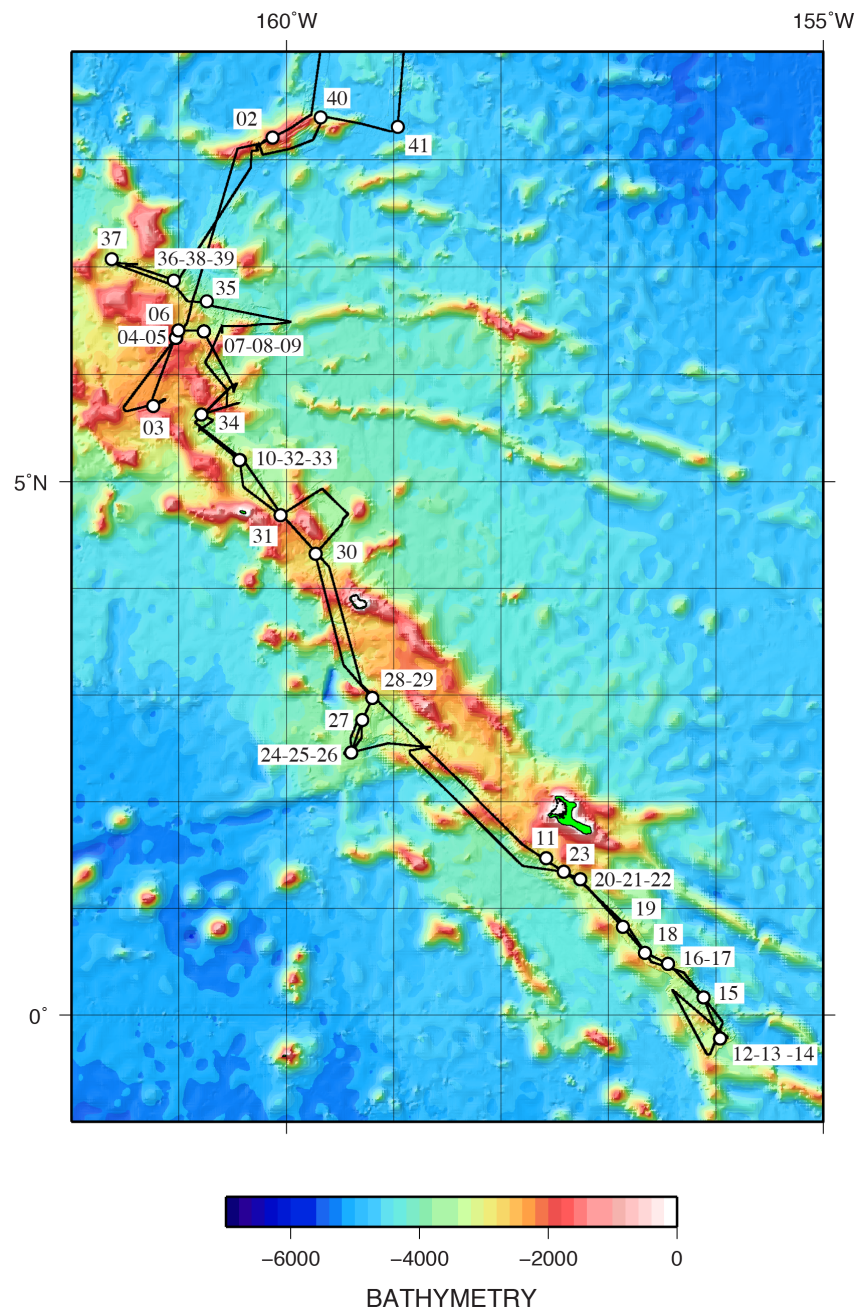
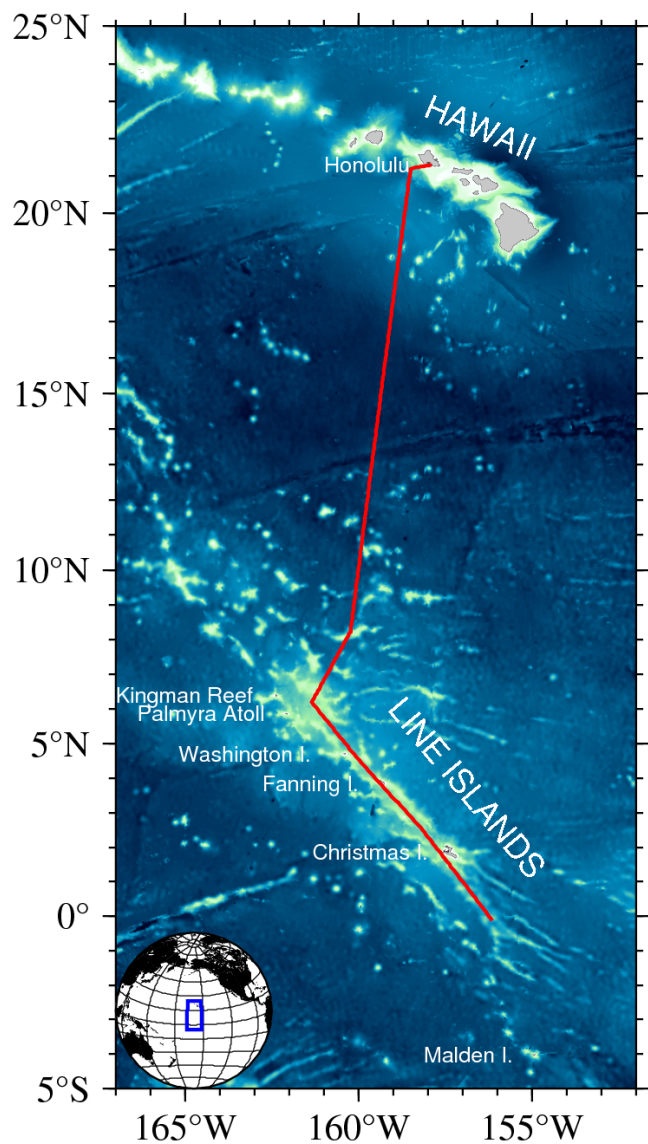


Pratigya Polissar LDEO
Jean Lynch-Stieglitz GT
Steve Hovan IUPUI
Mitch Lyle TAMU
Rick Murray BU
Rob Pockalny URI
A. Christina Ravelo UCSC

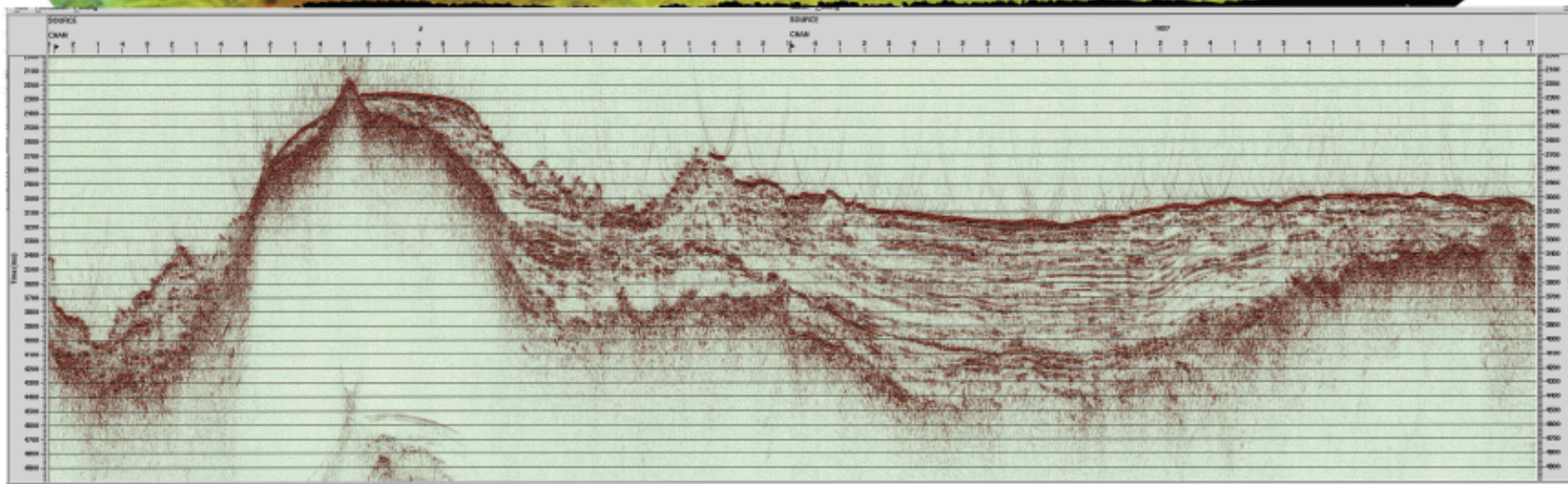
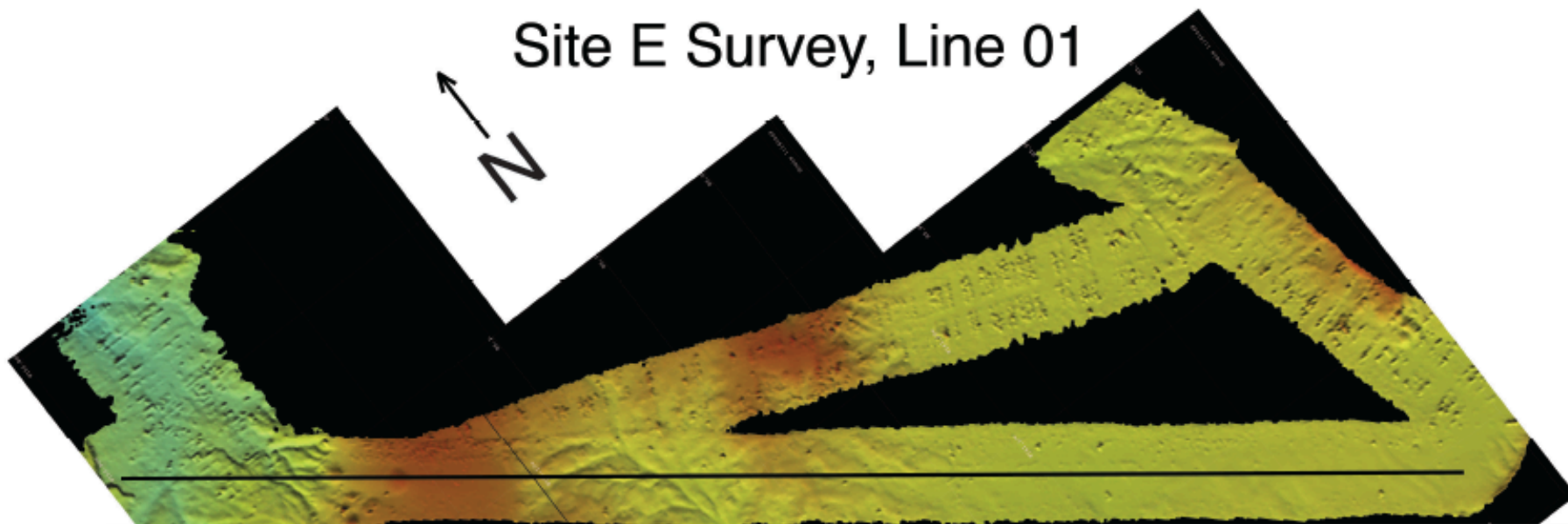
Science Party - Students and Post-docs
Captain and Crew of the Marcus Langseth
Oregon State University Coring Group
LDEO Marine Office
N.S.F. Marine Geology and Geophysics Program

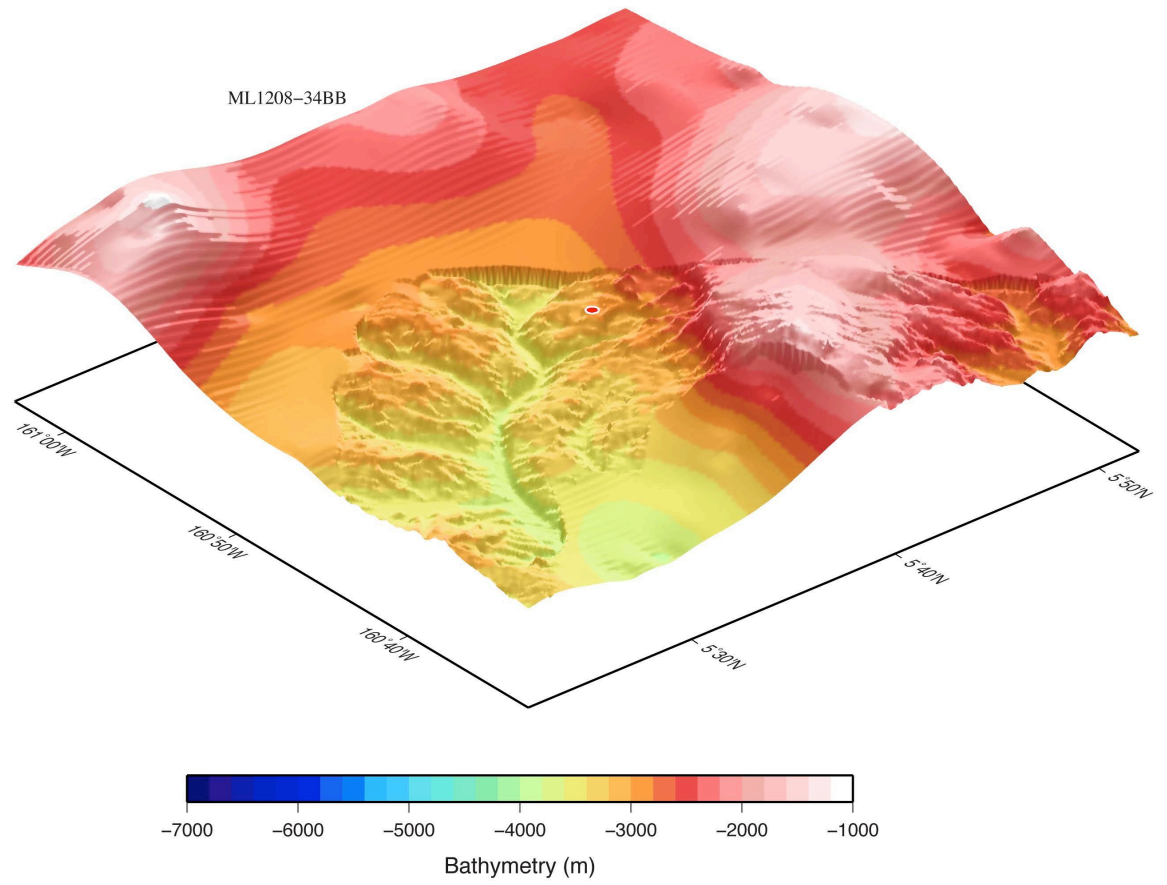
Why Line Islands?: El Niño & ITCZ

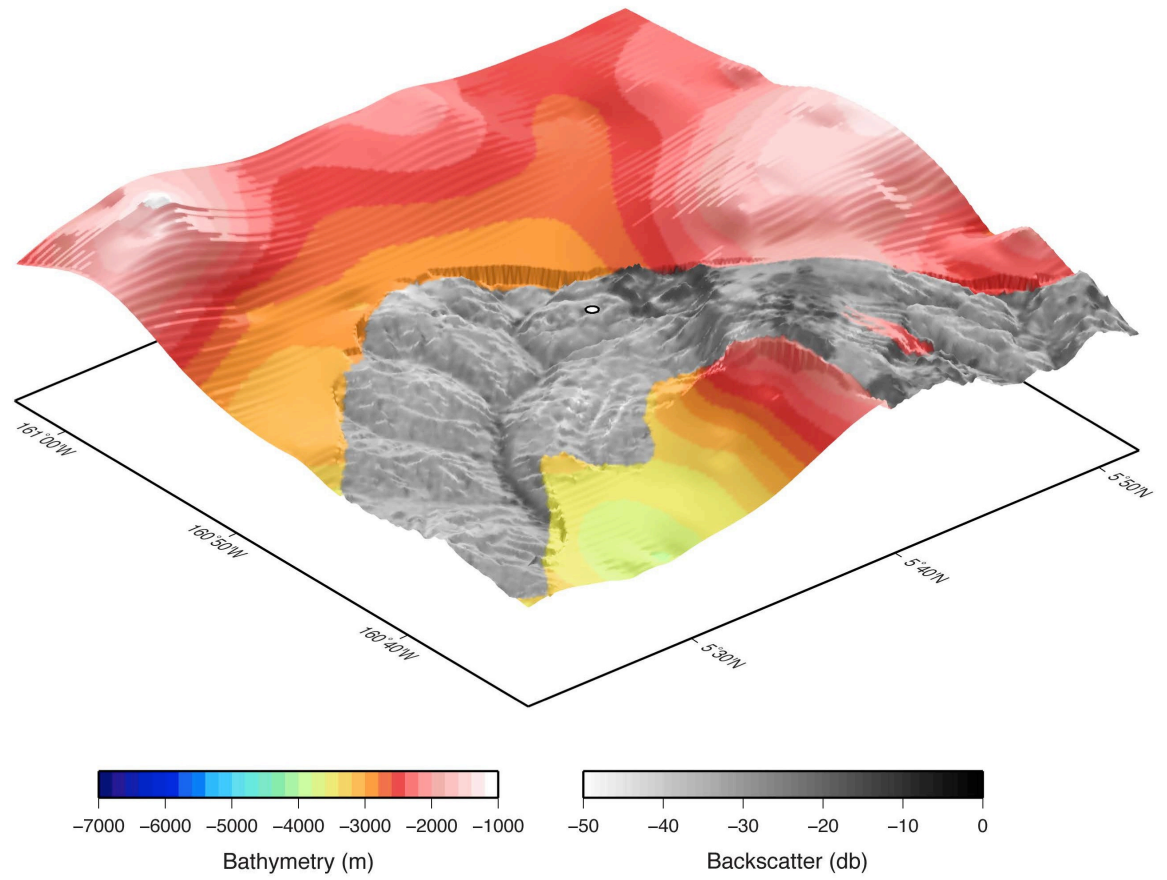


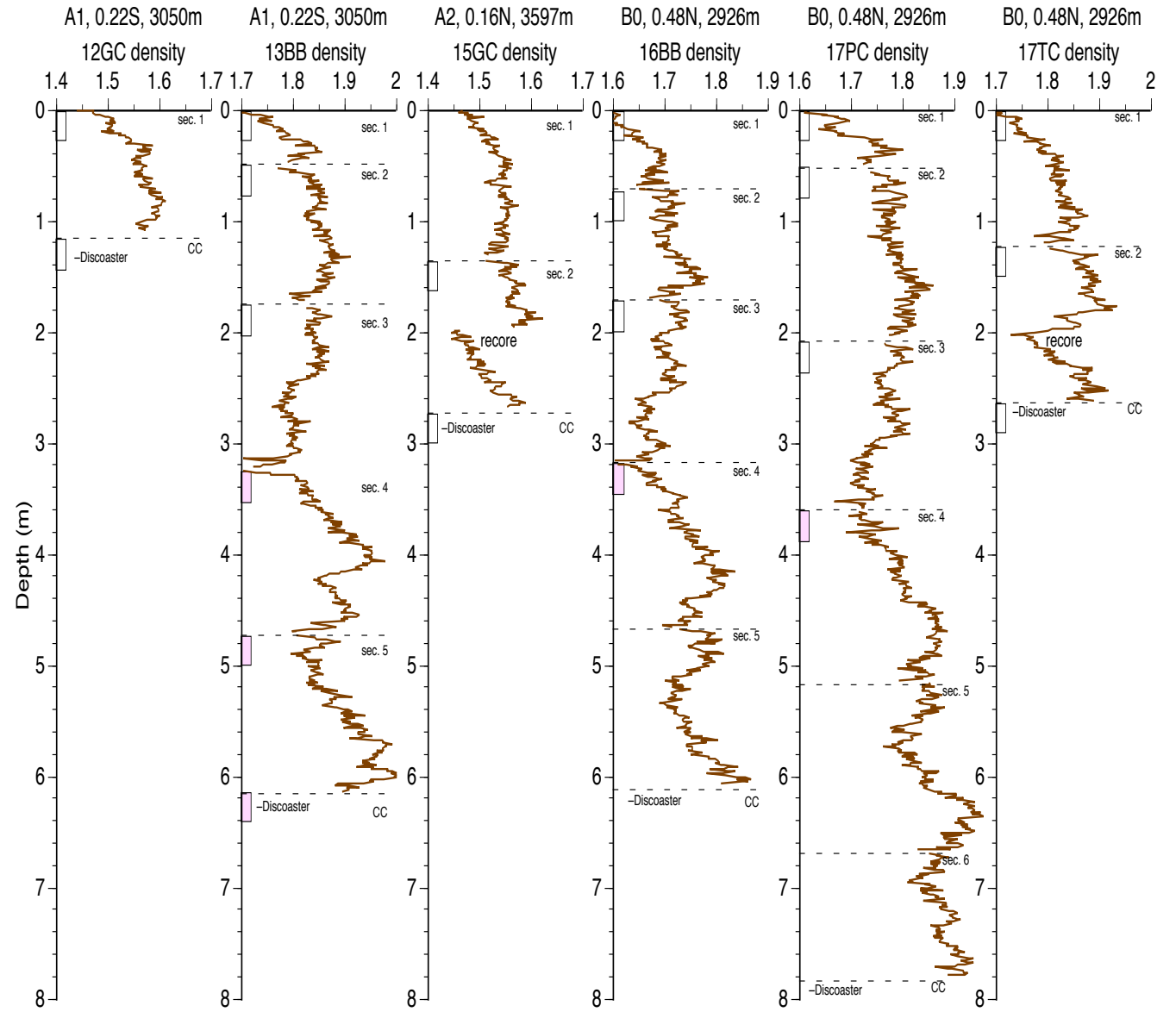
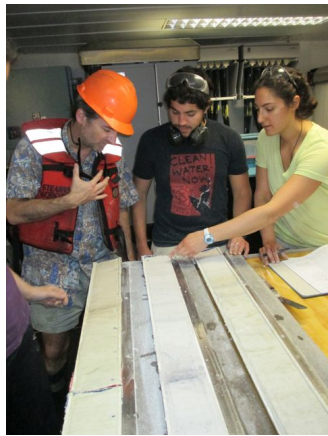
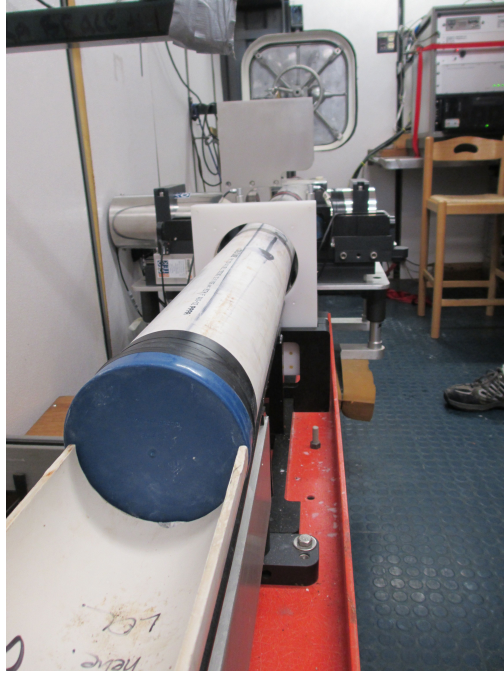


Site E Survey, Line 01

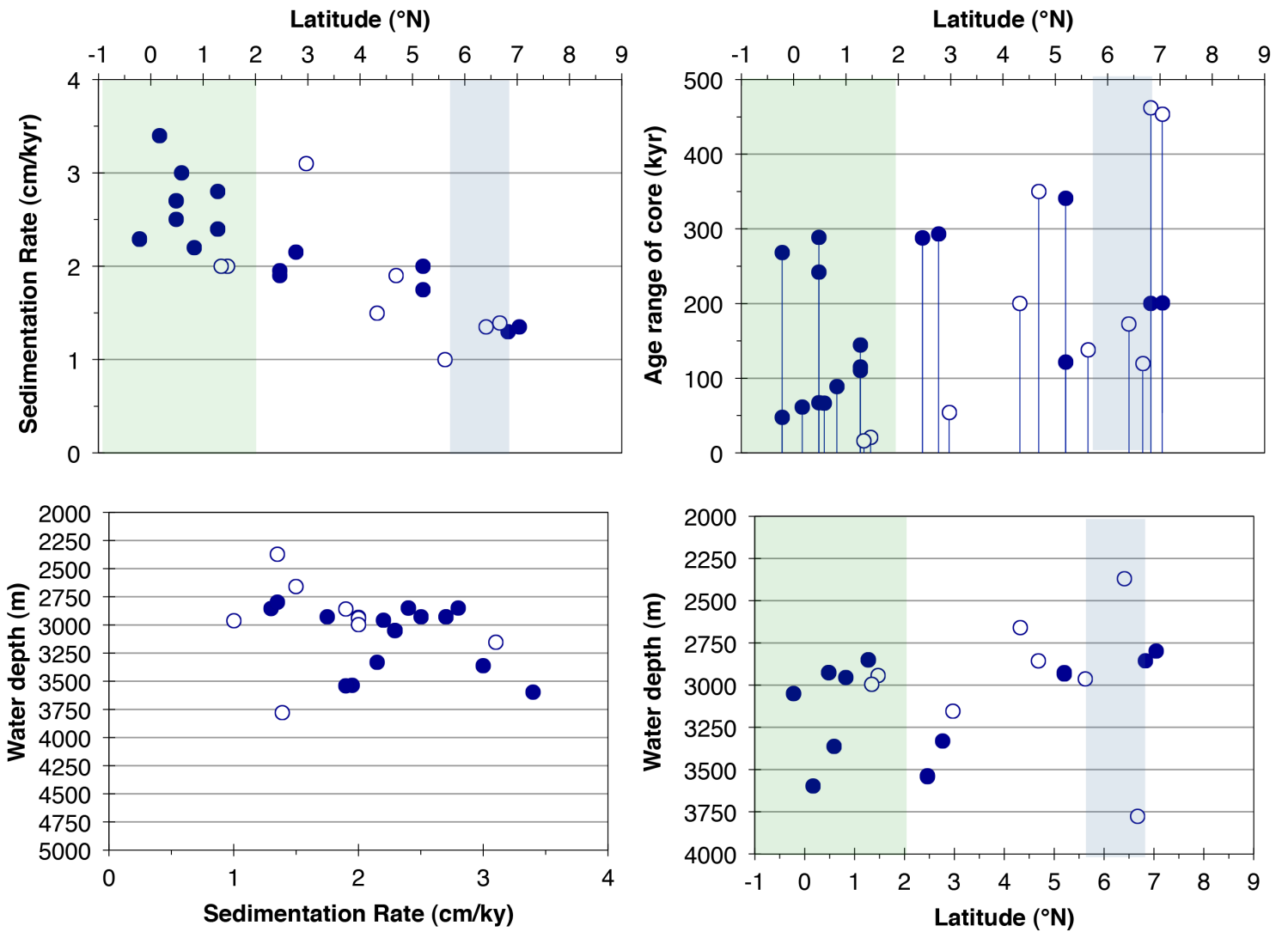
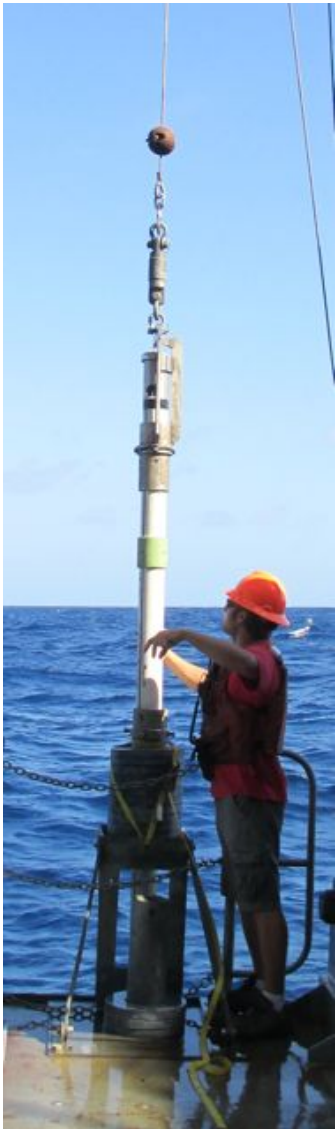






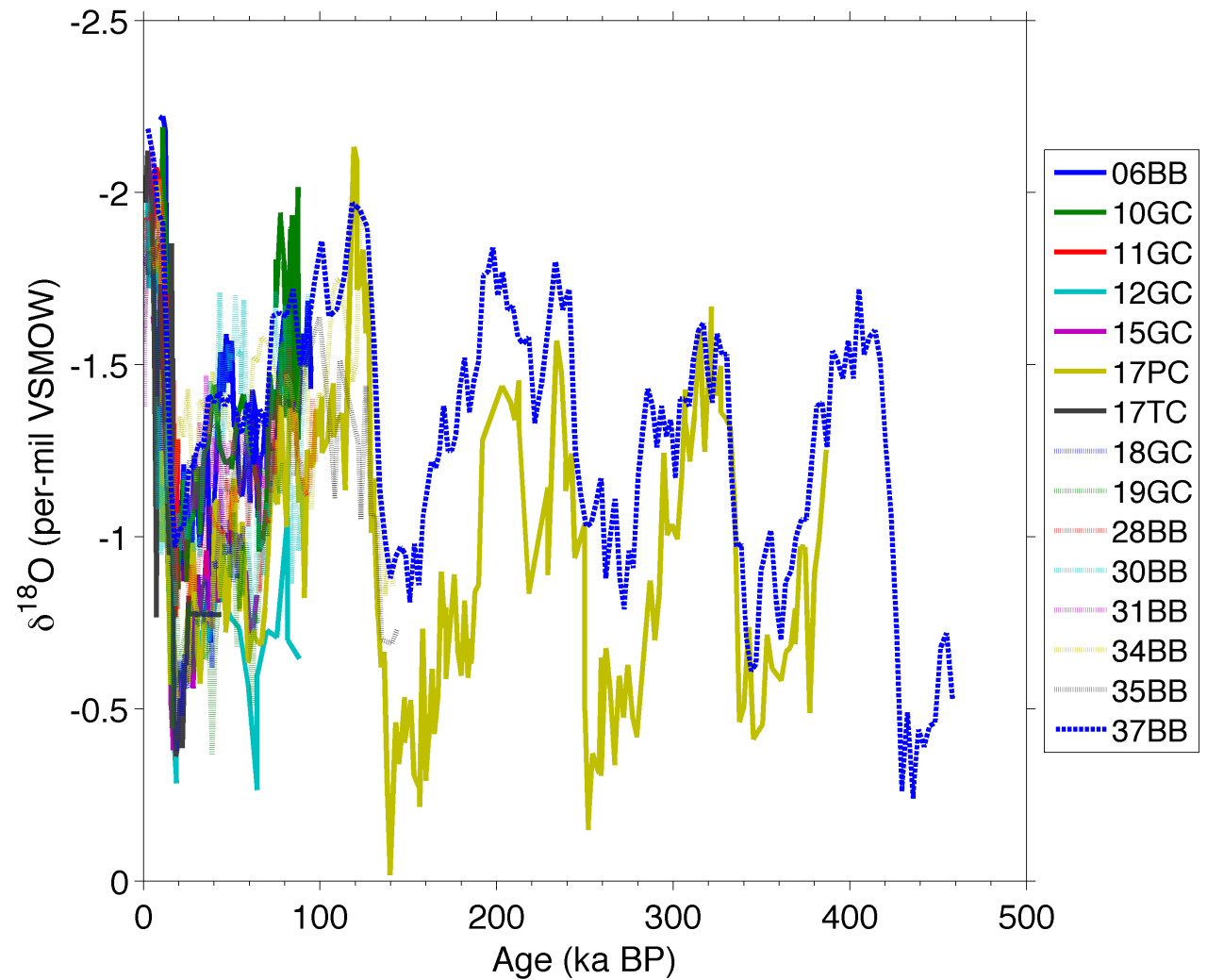


Core Recovery



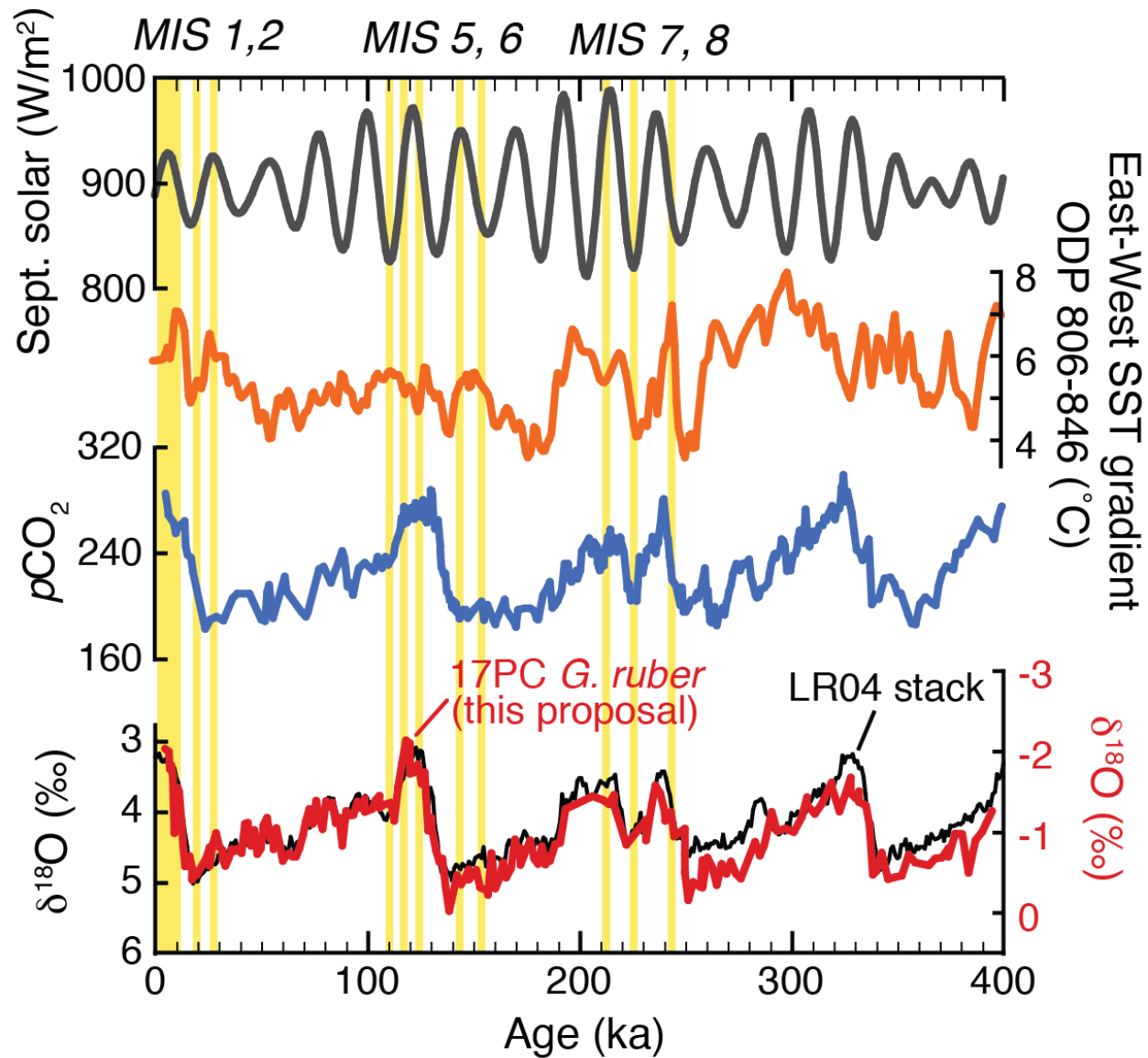
Foraminifera $\delta^{18}\text{O}$ Stratigraphy

ML1208 *G. ruber*



Polissar and Lynch-Stieglitz, unpublished data

Reconstructing El Niño



Thank You!

MGL 12-08 Talks at AGU:

Holocene ENSO variability at the Line Islands,
central tropical Pacific (PP23D-07 Tue. 3:10 pm)

A new stable water isotope-salinity dataset from
the central tropical Pacific (PP42C-03 Thur.
11:50)

Lamont-Doherty Earth Observatory
COLUMBIA UNIVERSITY | EARTH INSTITUTE



