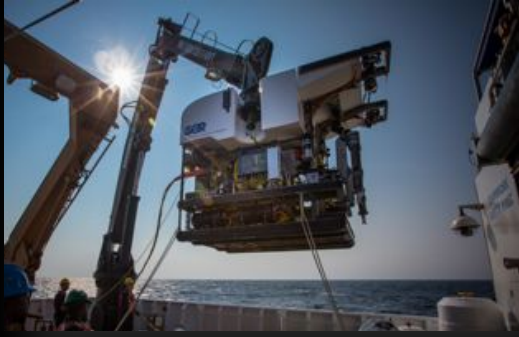


NOAA Report 2013

DESSC 2013 Annual Community Meeting
December 8, 2013, San Francisco, CA

Craig Russell
Program Manager
NOAA Office of Ocean Exploration and Research
Craig.Russell@noaa.gov



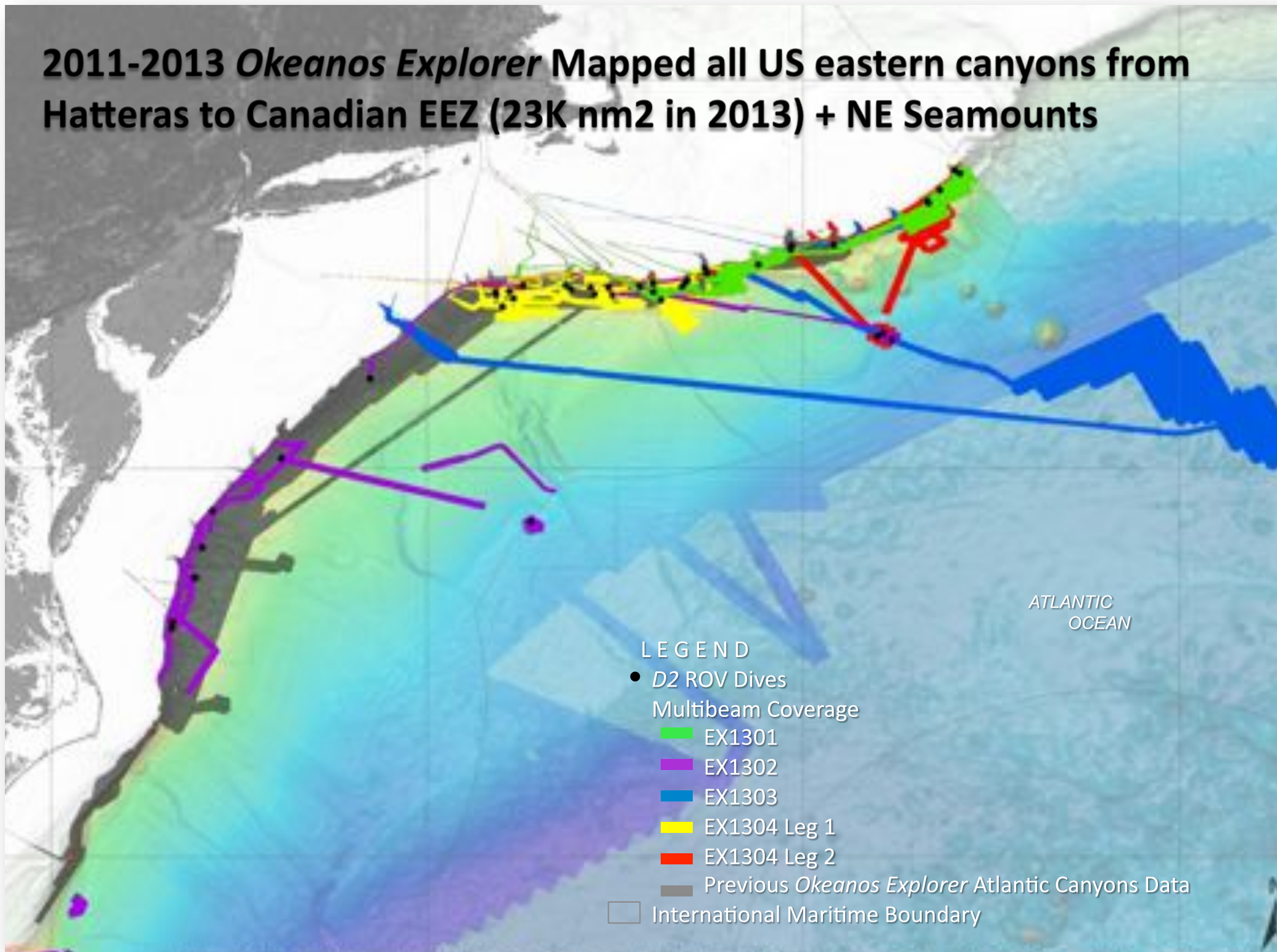
Two Topics:

- *Okeanos Explorer* Updates
- Mid-Atlantic Canyons Exploration with *Jason II*





2011-2013 *Okeanos Explorer* Mapped all US eastern canyons from Hatteras to Canadian EEZ (23K nm² in 2013) + NE Seamounts

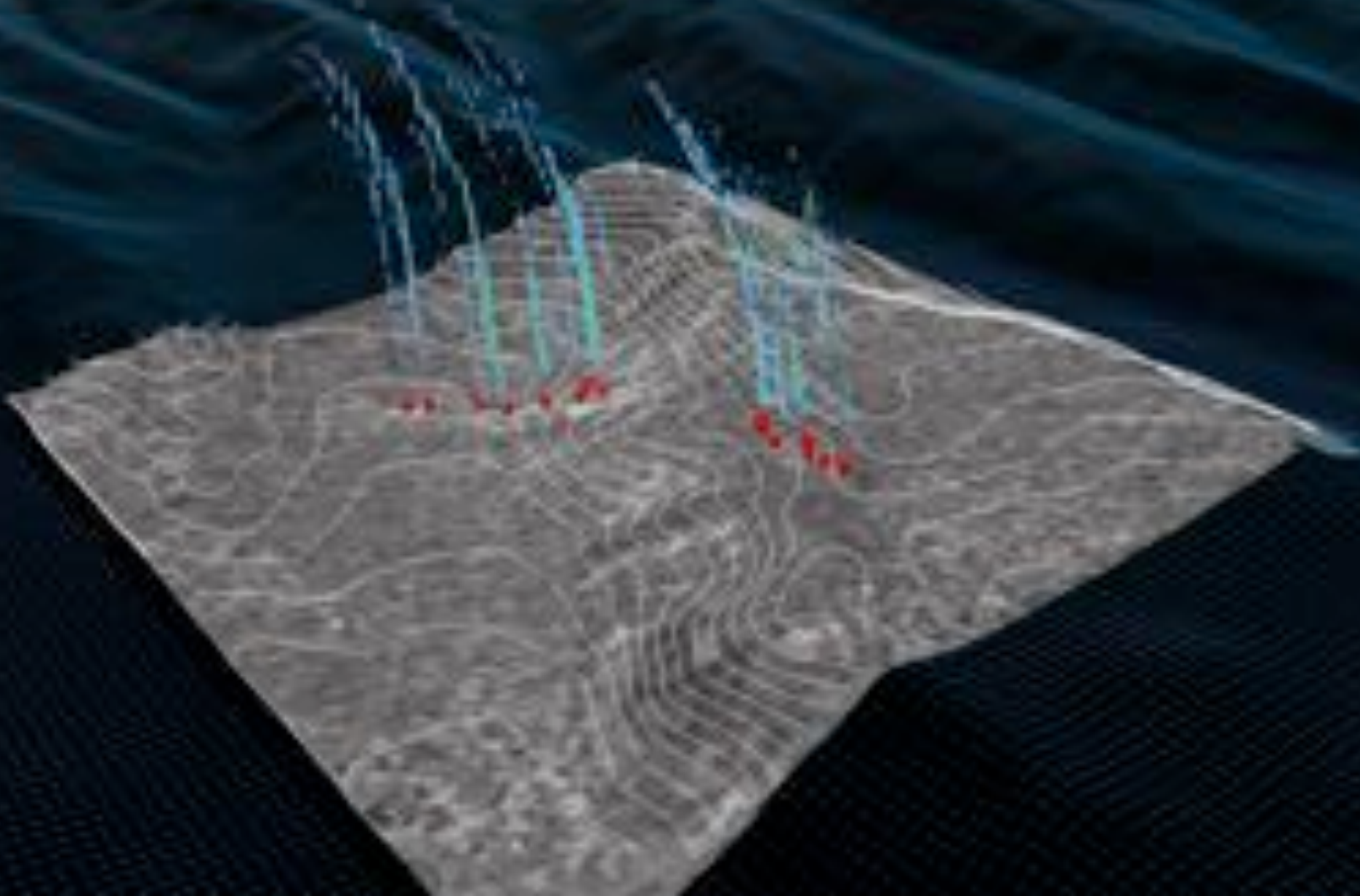


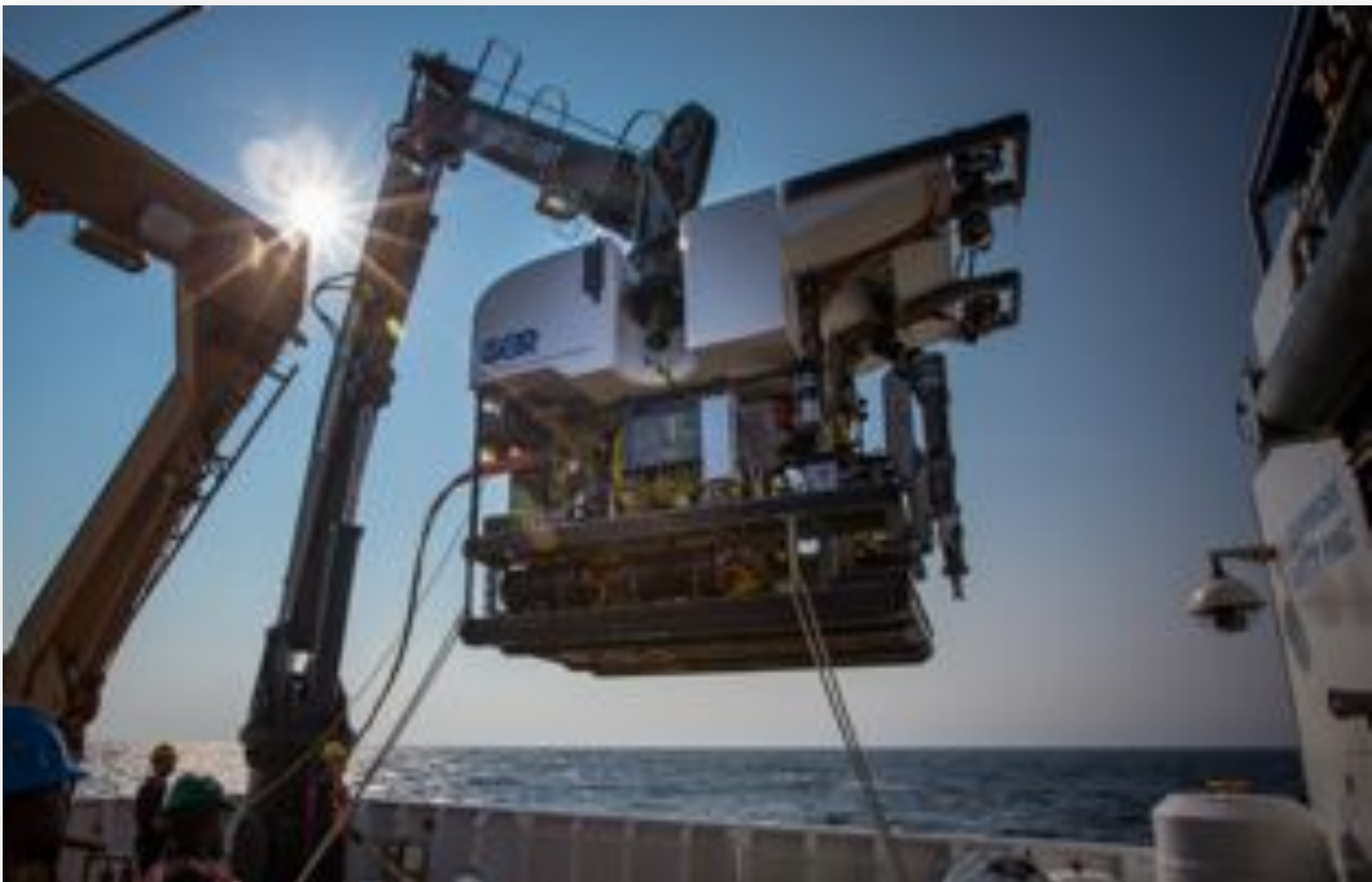
ATLANTIC OCEAN

LEGEND

- D2 ROV Dives
- Multibeam Coverage
 - EX1301
 - EX1302
 - EX1303
 - EX1304 Leg 1
 - EX1304 Leg 2
- Previous *Okeanos Explorer* Atlantic Canyons Data
- International Maritime Boundary

Potential Gas Seeps





Integration, Field Trials, Operations

Northeast Canyons Exploration









2013

2014 Plans





New Hampshire

Massachusetts



Data SIO, NOAA, U.S. Navy, NGA, GEBCO

© 2013 Google
Image Landsat

Google earth

263 km



EXPLORE

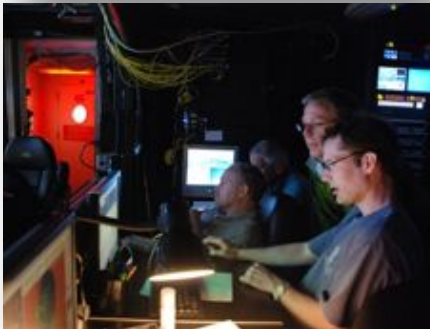
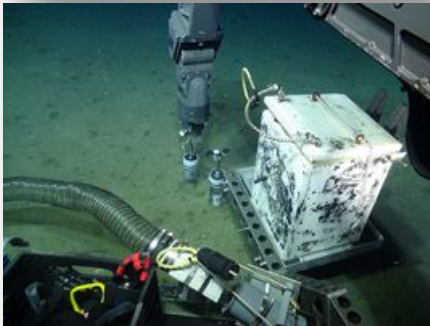
Mid-Atlantic Canyons Exploration Using ROV Jason II

Multi-year Interagency partnership
between NOAA, BOEM and USGS

Discovered new chemosynthetic
community

Identified new deep sea coral habitats

Surveyed and identified Billy Mitchell's
Fleet of WWI era shipwrecks



Mid-Atlantic Canyons Exploration Using ROV Jason II: Science Objectives



Multidisciplinary sampling along canyon walls

Mosaicking and reconnaissance of shipwreck sites

Biological samples from wrecks

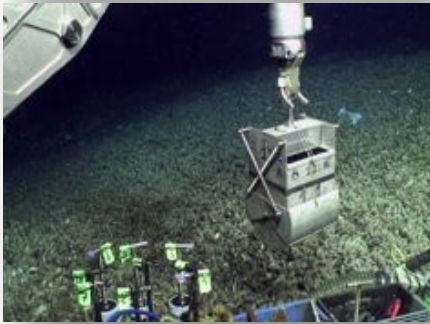
Operational flexibility

Jason II Asset Considerations

Continue to be a multi-use platform

Future improvements

- Mosaicking protocols
- Record to hard drives instead of CD and all in HD
- Automated de-interlace of high resolution imagery



NOAA/NSF/Navy Project



Ask him...

Questions?

Craig Russell
Program Manager
NOAA Office of Ocean Exploration and Research
Craig.Russell@noaa.gov