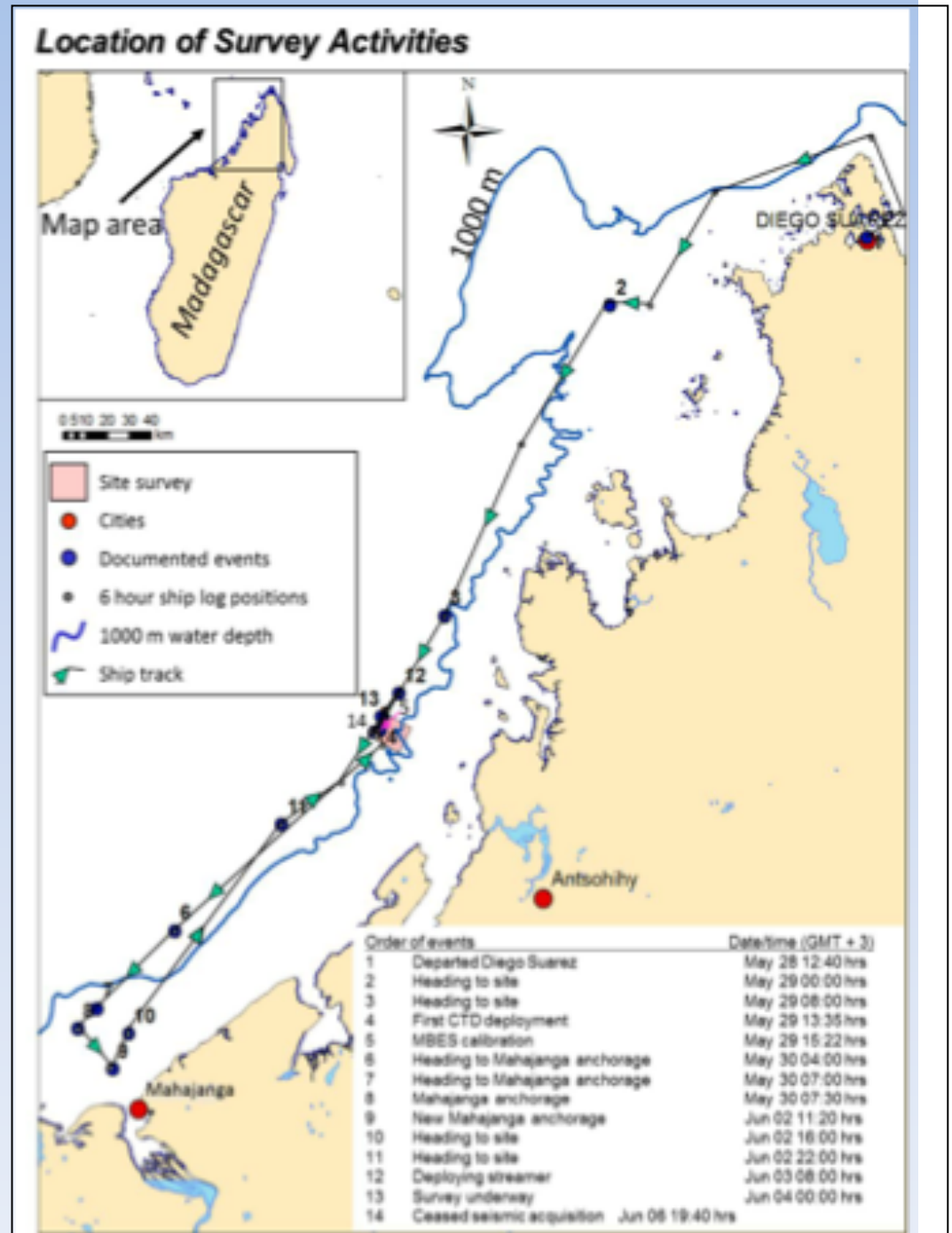


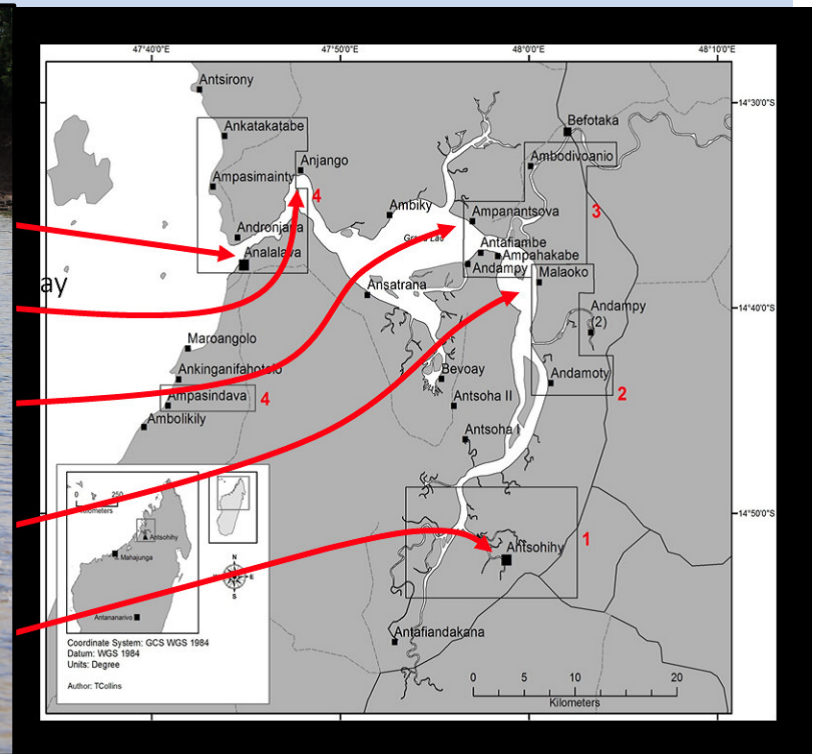
IWC Report

- May-June 2008 mass stranding of ~100 melon headed whales
- Independent Scientific Review Panel (ISRP) established to review 'facts'



IWC Report

- Whales typically found in open ocean entered into the estuary/river
- Whales appeared to be healthy
- ExxonMobil preparing for seismic survey in area
- No airguns
- Hull-mounted EM 120 MBES (12 kHz) was surveying at the time
- JASCO modeling report (post survey)



IWC Report

ISRP conclusions:

- Uncertainty surrounding event
- **Behavioral trigger** caused animals to move out of their natural habitat into one without prey; the new environment contributed to their death
- ISRP lacked key information to lead to unequivocal conclusion, but identified:

*“...MBES use as most plausible and likely **behavioral trigger** for the animals initially entering the lagoon system.”*

- Strandings as a result of MBES unlikely, **BUT:**

*“The potential for behavioral responses and indirect injury or mortality from the use of similar **MBES systems** should be considered in future environmental assessments, operational planning, and regulatory decisions.”*

Recent Docs of Interest

- MAR 2012 - BOEM Mid/South Atlantic Draft PEIS
(Substantial JASCO modeling of non-airgun sources)
- MAY 2013 - NOAA Hydrographic Survey Final EA/IHA/LOA
(No longer use < 30 kHz - not within their mission)
- SEP 2013 - IWC 2008 Madagascar Mass Whale Stranding Rpt
- **TBD 2013 (Nov??) - NMFS Draft Revised Acoustic Guidance**

Q: Why are these relevant?

A: Implications for acoustic sources used by UNOLS fleet!

Revised NMFS Acoustic Guidance

- Release of 'Draft' to Public anticipated NOV 2013
- Release of 'Final' anticipated EOY 2013 or early 2014
- Implications for **ALL** acoustic sources (Level A)
- Focus on Behavioral thresholds (Level B) for SEISMICS only
- 'Implementation guide' included (e.g., calculating take, monitoring/ mitigation)

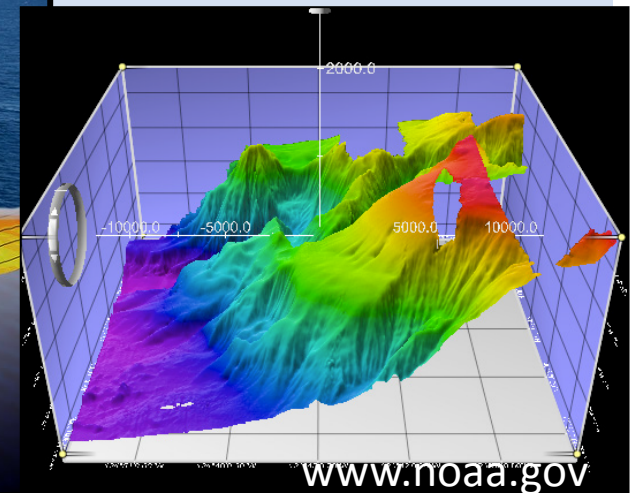
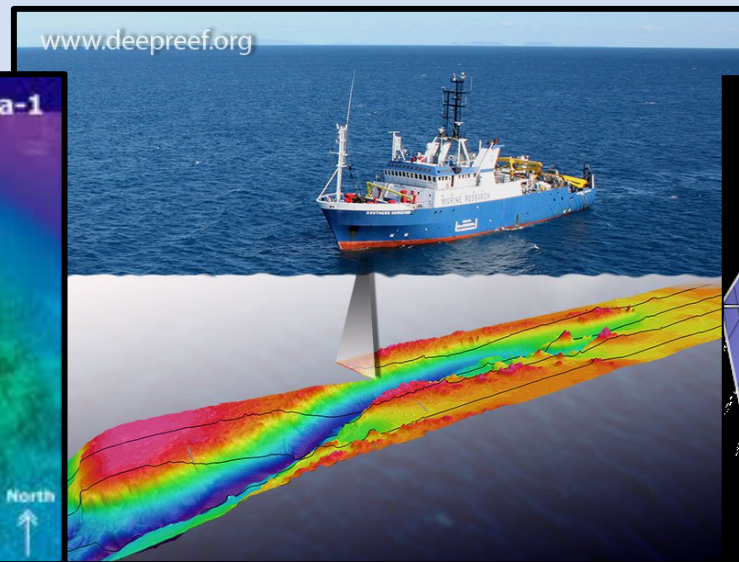
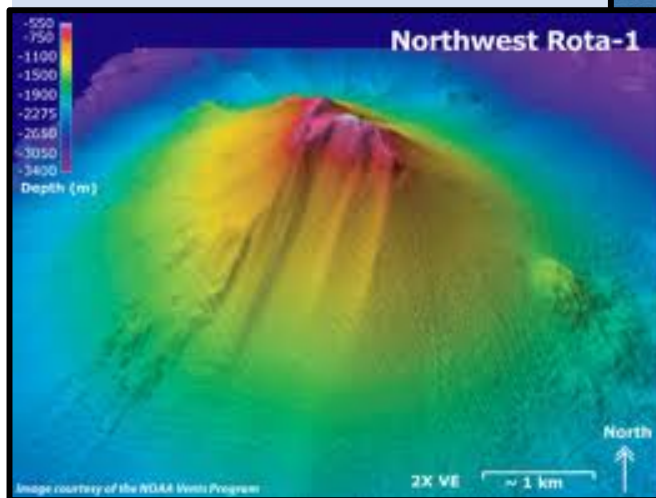
*****Activities *eventually* need to comply with NMFS Acoustic Guidance (transition period anticipated)*****

Q: What can you do??

A: Review the 'Draft' Guidance when released and provide public comments to NMFS!!!

Interagency Efforts

- Discuss acoustic issues/activities with Regulators
- USGS/BOEM/NSF interested in SSV of acoustic sources
 - Identify sources
 - Conduct SSV
 - Develop Regulatory Documentation
- Example: USGS plan for all sources (hull-mounted, towed, etc.) up to small airguns across range of frequencies up to 200 kHz



Links:

IWC Report:

<http://iwc.int/2008-mass-stranding-in-madagascar>

BOEM Mid/South Atlantic PEIS:

<http://www.boem.gov/oil-and-gas-energy-program/GOMR/GandG.aspx>

NOAA Hydrographic Survey Final EA:

<http://www.nauticalcharts.noaa.gov/Legal/docs/2013-18%20NEPA%20OCS%20Final%20PEA.pdf>

NOAA SWFSC Draft EA:

http://www.nmfs.noaa.gov/pr/pdfs/permits/swfsc_ea_draft2013.pdf

Contact Info

- Jim Holik, NSF OCE IPS, jholik@nsf.gov
- Holly Smith, NSF OGC, hsmith@nsf.gov
- Carolyn Ruppel, USGS Woods Hole, cruppel@usgs.gov



William Lang



[CC BY SA 3.0 Matt H. Wade](https://creativecommons.org/licenses/by-sa/3.0/)
<http://en.wikipedia.org/wiki/User:UpstateNYer>
<http://creativecommons.org/licenses/by-sa/3.0/>



Photo: Dr. Louis M. Herman/NOAA