



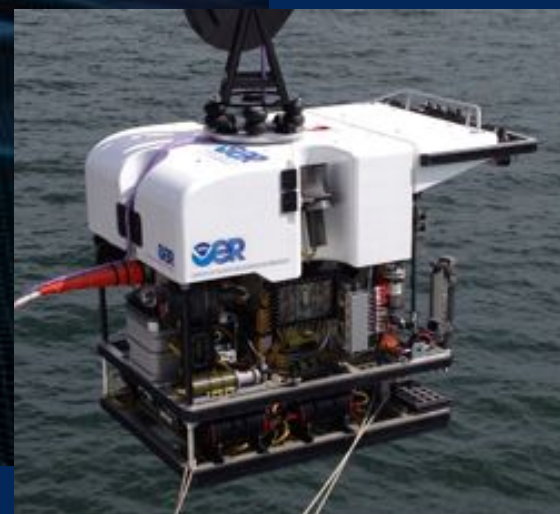
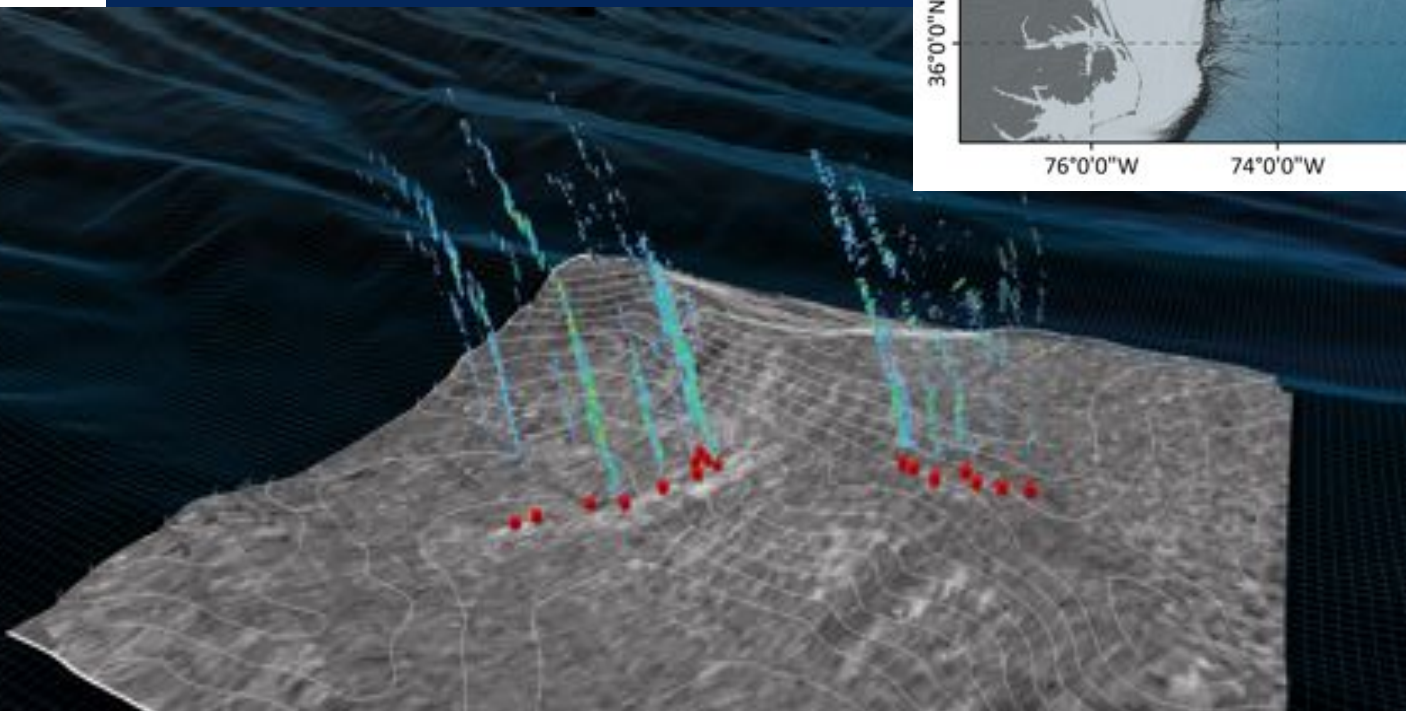
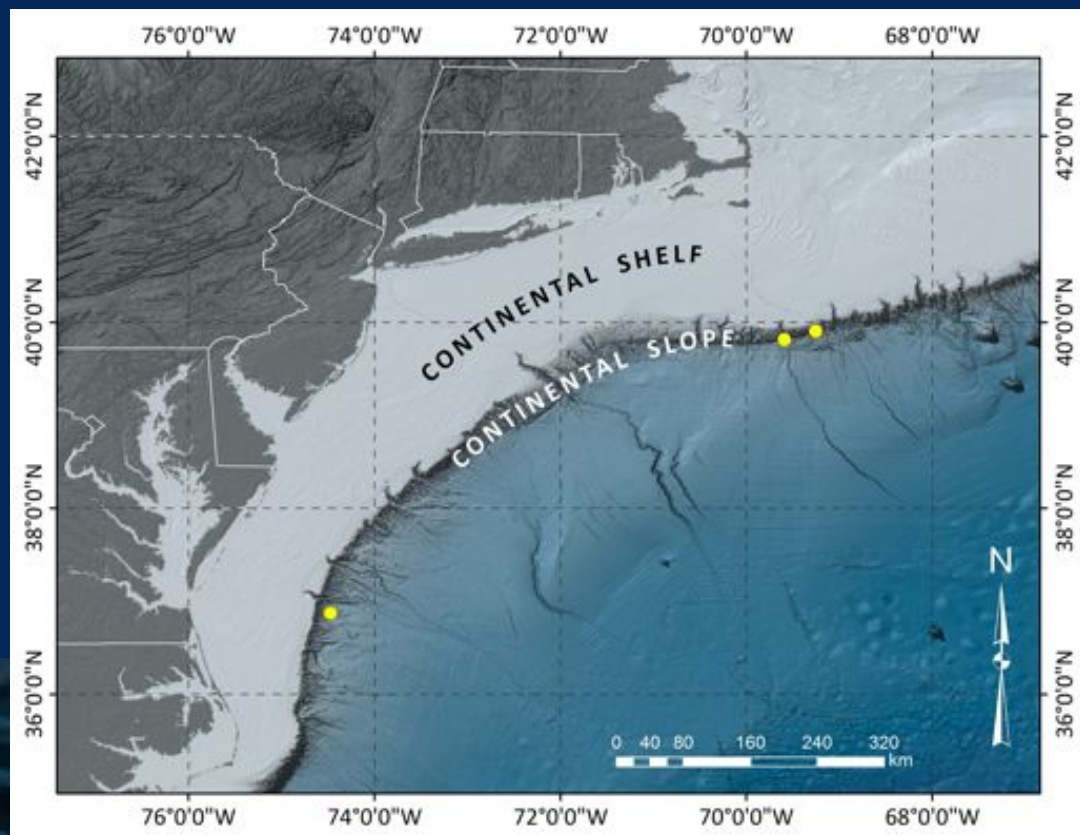
THE
UNIVERSITY
OF RHODE ISLAND
GRADUATE SCHOOL
OF OCEANOGRAPHY



Mission Control



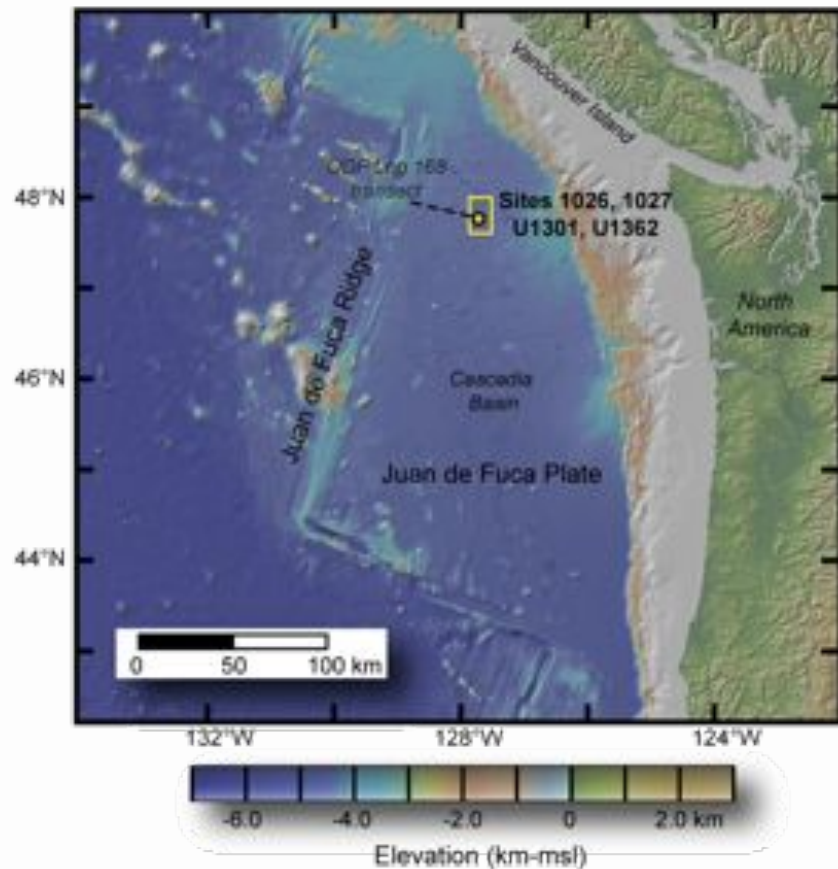
EXPLORE



NAUTILUS EXPLORATION PROGRAM



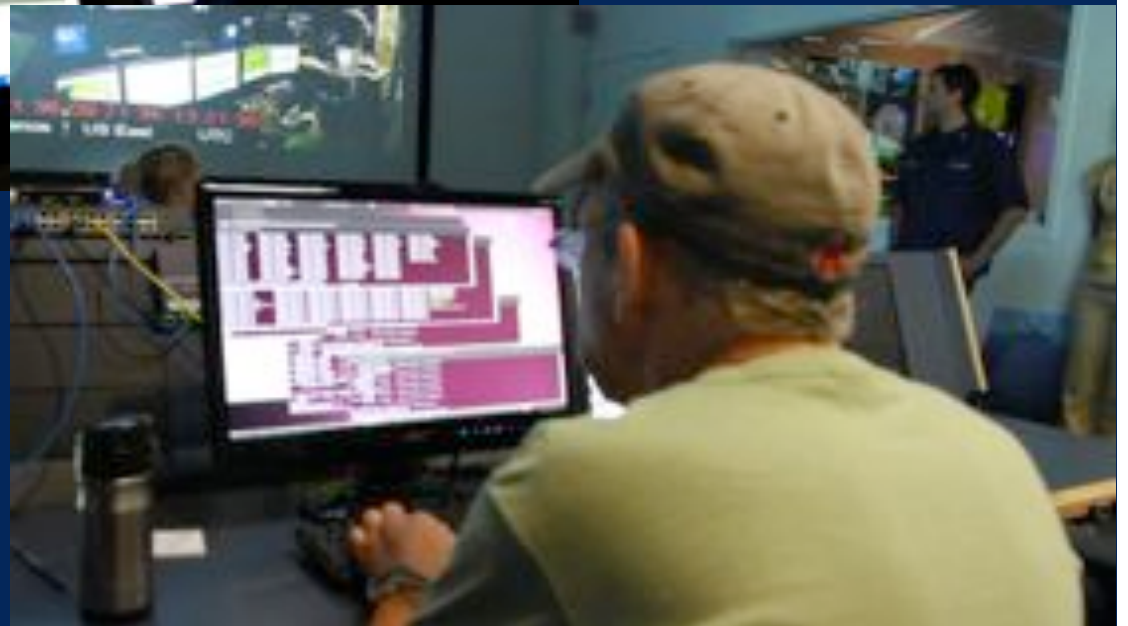
National Deep Submergence Facility





ISC Mission Control





ISC Mission Control

Timeline for NDSF Telepresence

May 2012 – Marsh Youngbluth meeting at ISC w/ UNOLS office staff

June 2012 – DeSSC Meeting at WHOI

July 2012 – Sentry cruise on Okeanos Explorer based at ISC

Sept 2012 – Bruce Corliss joins GSO as Dean, detailed discussions began

Oct 2012 – UNOLS Council meeting w/ Bob Ballard

Encouragement from Bob Houtman to develop a plan

Nov 2012 – Several meetings with WHOI and UNOLS

Invitation to selected PI's (Toomey, Fisher, Johnson)

Feb 2013 – Meeting with NSF/ONR after a UNOLS scheduling mtg at GSO

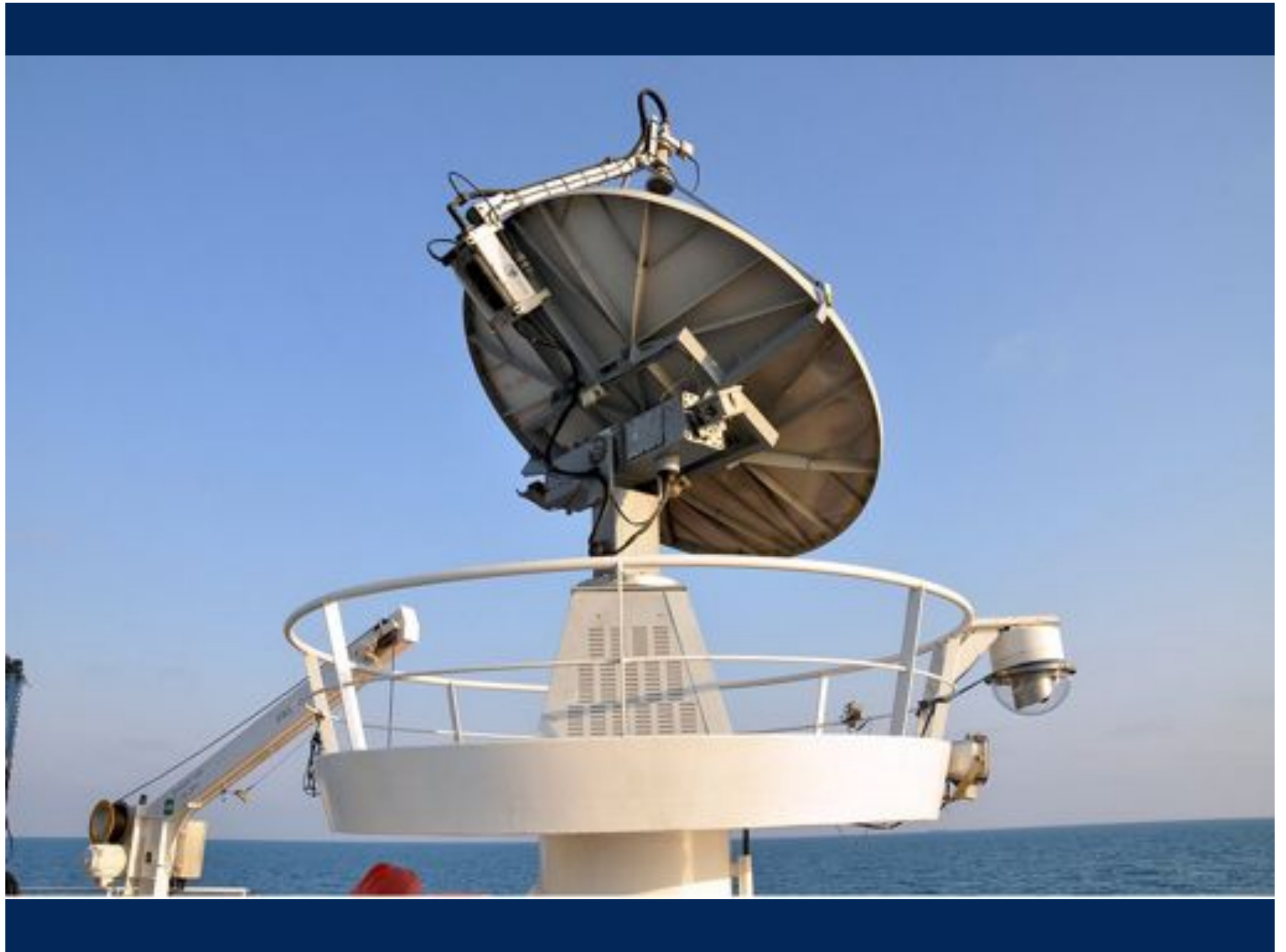
March 2013 – Proposal and Budget developed for ONR and NSF

April 2013 – Coordination with PI's and WHOI

May 2013 – Educator conference at URI-GSO

Fly-away telepresence system installed on R/V Atlantis







Mobile Telepresence Unit (MTU)





EXPLORATION NOW

VIDEO
E/V NAUTILUS

LOCATION
GULF OF MEXICO

STATUS
EXPLORING



E/V NAUTILUS

GULF OF MEXICO



E/V FALCON

GULF OF MEXICO



E/V ATLANTIS

GULF OF MEXICO

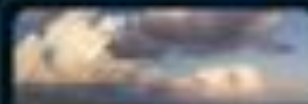


LOCATION
GULF OF MEXICO

EXPLORING

STATUS

MISSION
The E/V Nautilus is a deep-sea research vessel, designed to explore the Gulf of Mexico and the Atlantic Ocean. It is the only vessel in the world that can operate at depths of up to 6,000 meters.



DEEP SEAS

EXPLORE THE DEEP-SEA WITH NAUTILUS LIVE



NAUTILUS LIVE

Explore the ocean LIVE with Dr. Robert Ballard and his Corps of Explorers aboard E/V Nautilus



STAY CONNECTED +

THE MISSION THE HIGHLIGHTS THE TECH THE TEAM THE LATEST FOR EDUCATORS FOR KIDS



ROBERT BALLARD

Offseason

Click on left side to



ROBERT BALLARD

Want to sail on Nautilus? Go here to find out how.

<http://www.searesearchfoundation.org/opportunities> 4 months 2 weeks ago

STATUS LOG

Data log offline

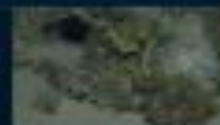


MISSION LOG

2012 Nautilus

Summary

7 months 4 weeks ago



Nautilus D

Shipwreck - Dive Highlights

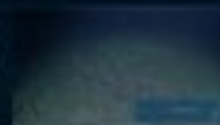
8 months 2 days ago



Nautilus P

Shipwreck - Dive Highlight

8 months 2 days ago



E/V Nautilus

SHIP OF EXPLORATION

UNMANNED SUBMERSIBLE



ROV Hercules

UNMANNED SUBMERSIBLE



ROV Argus

UNMANNED SUBMERSIBLE



Mystic Aquarium – Nautilus Live Theater, CT










OCEAN EXPLORATION HUB

2013 ROV Shakedown and Field Trials in the U.S. Northeast Canyons: Follow along as the Okeanos Explorer team "shakes down" a new remotely operated vehicle (ROV) capable of diving to depths of 6,000 meters.





Okeanos Explorer 2010
INDIAN OCEAN EXPEDITION

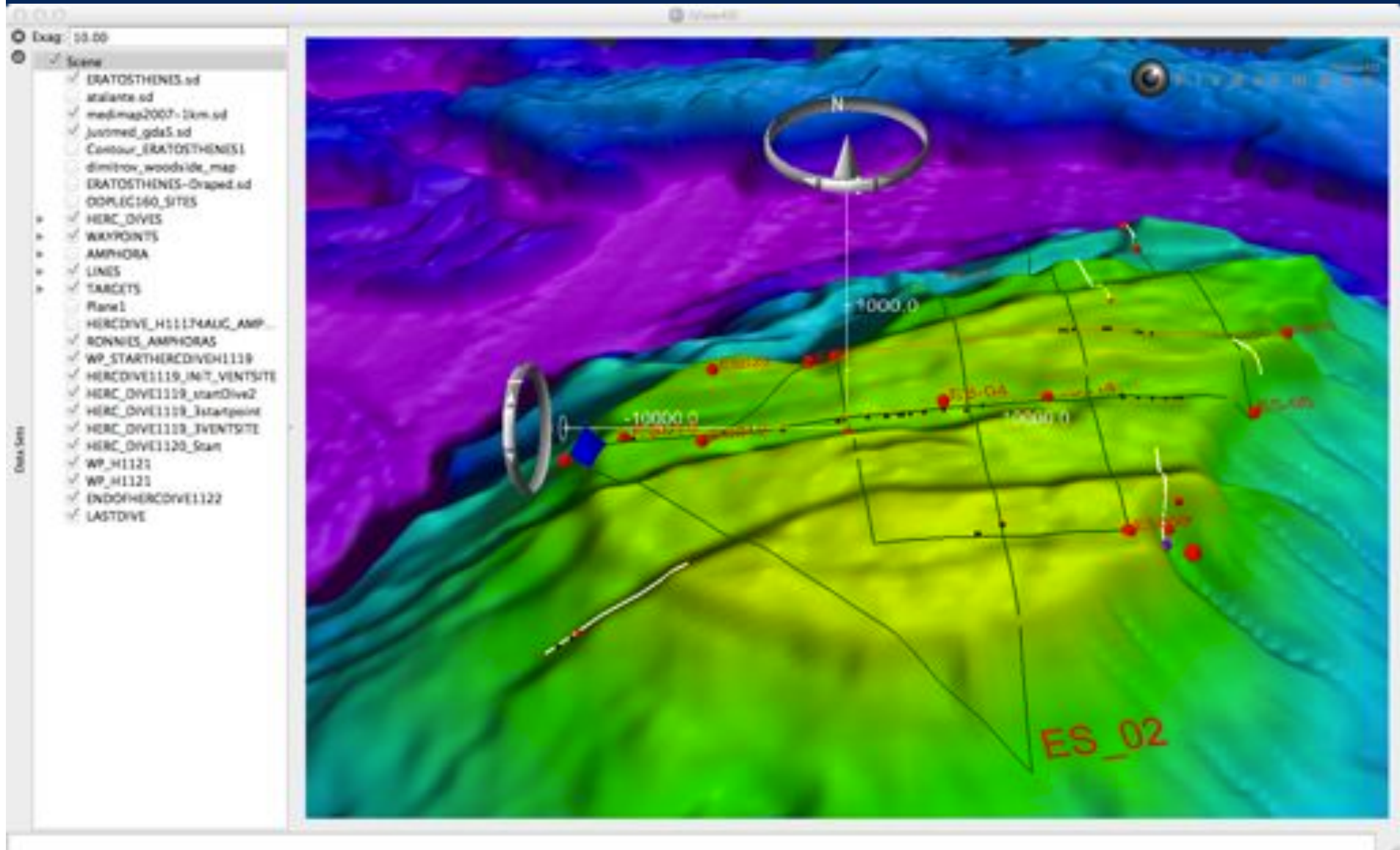
Live

Live

Live

The Okeanos Explorer is the first vessel in the fleet of the National Oceanic and Atmospheric Administration (NOAA) to be dedicated solely to exploration and discovery missions. It's equipped with a remotely operated vehicle (ROV), sophisticated multibeam sonar technology for mapping the sea floor as deep as 6000 meters (nearly 20,000 feet), and 24-hour satellite telecommunications equipment to beam images in real time from the ship and ROV to destinations on shore. The Okeanos Explorer is primed for making new discoveries with every mission it undertakes. Venture into the vast and largely unknown ocean and follow along with the Okeanos Explorer scientists and crew on their discovery voyages.





NAUTILUS LIVE

NEWS UPDATE



File View

Selected Unit: ROV
Lat (deg): 004° 40' 35.413" N
Lon (deg): 125° 05' 14.115" E
Speed (kt): 0.0
Heading (deg): 180.0
Pitch (deg): 0.0
Roll (deg): 0.0
Course (deg): 0.0
Sea floor (ft): 6231
Depth (ft): 16777.4

2010-Jun-29 00:32:54 Z

rite

115.8 dg



Summary: Santorini, 2010 (NA007)

Station: 00000106 - 00000001

Weather Type: Stormy

Objective: - Document the extent and nature of the submarine volcano deposits from the Minoan eruption that are distributed on the seafloor around Santorini

Deployment: 000001

Location: Santorini

Deployment: 000001

Deployment: 000001

Location: Santorini

Deployment: 000001

Station: 000001

Deployment: 000001

Deployment: 000001







ISC VIDEO BROADCAST AND PRODUCTION STUDIO



INTERNET2

EXPLORATION COMMAND CENTERS (ECCs)



NOAA PMEL, Seattle, WA



NOAA Ship Okeanos Explorer, "America's Ship for Ocean Exploration"

Featured Expedition: Gulf of Mexico 2012 Expedition



Featured Content

Watch video clips from the [Okeanos Explorer Gulf of Mexico 2012 Expedition](#). See how scientists used the tandem remotely operated vehicles (ROVs), [Little Hercules](#) and [Seirios](#), to explore deep-sea habitats and marine life in the northern Gulf of Mexico.



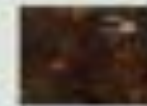
[Okeanos Explorer](#)



[Education](#)



[Expeditions](#)



[Statistics](#)



[Video Playlist](#)



[Okeanos Explorer Digital NOAA](#)



Chat Transcript Viewer

Any Date : [Icons]

Delete Hide Emoticons Hide Timestamps

Contacts	To	From
angelawilliams...	realtimedata@conference	dwrightcolema
eventlog@conf...	realtimedata@conference	dwrightcolema
eventlog@co...	realtimedata@conference	dwrightcolema
harrisonzimme...		
elleyelliott@te...		
eteretnroyer@t...		
realtimedata@c...		

Altitude: 22.3m

Heading: 161.1

2:51:46 PM administrator@tethys.gso.uri.edu: 0

Lat/Lon: 28.50544, -87.48311

Depth: 2278.9m

Altitude: 6.0m

Heading: 172.7

Seinos:

Lat/Lon: 28.50541, -87.48316

Depth: 2267.2m

Altitude: 23.5m

Heading: 162.3

Transcripts

EX is 1250. We are currently conducting ROV operations at a hydrothermal vent site, on "Mount Dent". Operations are being conducted in waters within the Cayman Islands Exclusive Economic Zone. The ship's current heading is 035 degrees, and the location is 18 22.62 N, 81 47.88 W. ROV operations will continue throughout the day.

(5:49:39 PM) Bobbie: what ar the white boulders -zoom ?

(5:50:16 PM) Bobbie: ahhhhh ?

(5:50:32 PM) jamesonclarke: limestone?

(5:50:49 PM) mikecheadle: talc?

[Icons]

12:38:01 PM pernyuanhsing@tethys.gso.uri.edu: Imaging with IK, moving from bottom up for ice view.

12:38:07 PM cationamunro@tethys.gso.uri.edu: EGG case?

12:38:08 PM timothyshank@tethys.gso.uri.edu: MM1-4 Little Hercules:

Lat/Lon: 28.68251, -88.34501

Depth: 1584.8m

Altitude: 0.2m

Heading: 348.8

12:38:15 PM pernyuanhsing@tethys.gso.uri.edu: May need to frame grab then mosaic.

12:38:16 PM timothyshank@tethys.gso.uri.edu: BAR at base

12:38:30 PM santlagoherera@tethys.gso.uri.edu: ~10 BAR?

12:38:37 PM santlagoherera@tethys.gso.uri.edu: Great view!

12:40:39 PM pernyuanhsing@tethys.gso.uri.edu: HYD?

12:40:54 PM timothyshank@tethys.gso.uri.edu: Saw ACN with SQA on it, Chirostylid crab, another ACN at left mid-way up.

12:42:08 PM santlagoherera@tethys.gso.uri.edu: zoom on SQA

12:43:43 PM santlagoherera@tethys.gso.uri.edu: SHI

12:45:42 PM timothyshank@tethys.gso.uri.edu: zoom on SHI

12:46:16 PM pernyuanhsing@tethys.gso.uri.edu: two hours 45 minutes left before ROV recovery

12:46:43 PM pernyuanhsing@tethys.gso.uri.edu: Little Hercules:

Lat/Lon: 28.68241, -88.34503

Depth: 1584.1m

Altitude: 1.3m

4 transcripts











NOAA Headquarters - Silver Spring, MD



University of Delaware



University of Haifa, Israel



University of New Hampshire



Mystic Aquarium – Nautilus Live Theater, CT



Cape Henry Collegiate School, VA



Exploratorium, San Francisco



Scottsdale, AZ Boys & Girls Club

EV Nautilus - 2011 Expedition

NA013- August 22 2011 - Knidos O



Hercules HD



Argus HD



Control Van



Hercules Captures

V system Argus and Hercules.



MYSTIC
AQUARIUM

THE
UNIVERSITY
OF RHODE ISLAND

COMPOSITE VIDEO STREAM



What's happening now at the Inner Space Center?

The Inner Space Center is getting ready for the 2012 E/V Nautilus expedition. You'll be able to get the live feeds here, as well as photo and video highlights. The ISC is also continuing to support the Okeanos Explorer.



Select a video:



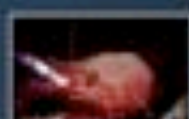
Live feed: Okeanos Explorer



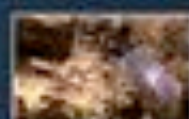
Unknown Ocean Deep Sea Archeology



Unknown Ocean Deep Sea Geology



Unknown Ocean Deep Sea Crustaceans



Unknown Ocean Deep Sea Communities



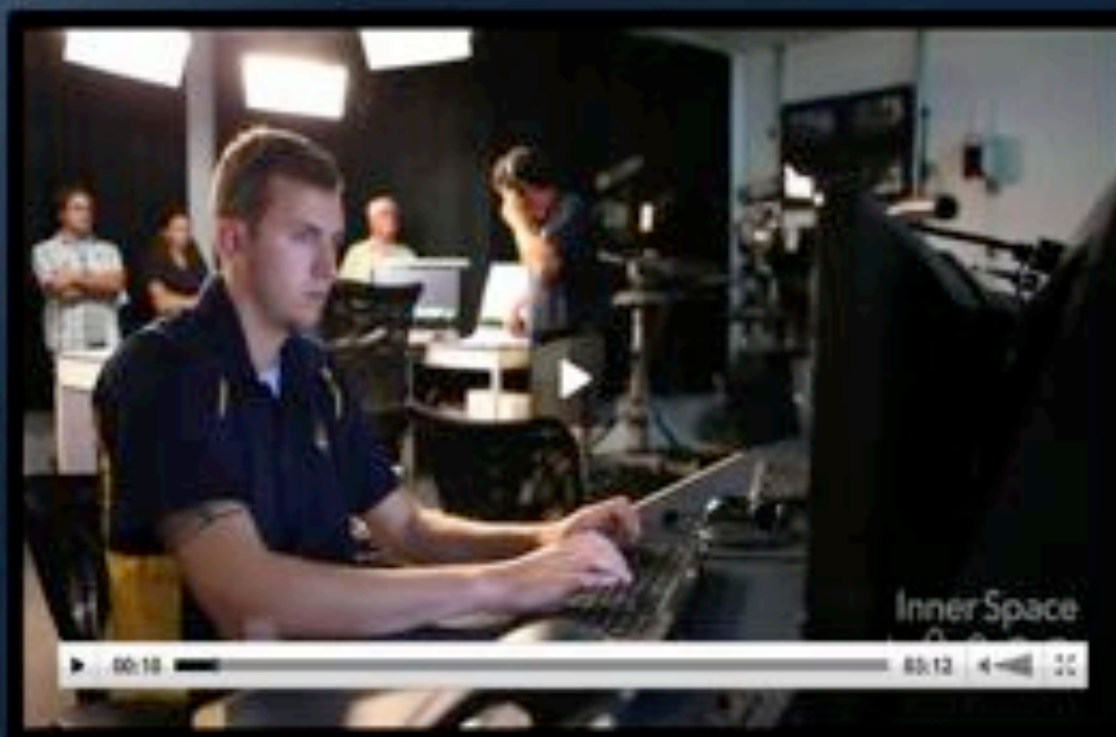
Unknown Ocean Mapping the Seafloor



Unknown Ocean Guide to the ROV

ISC Gallery
[click here](#)

Show Top Sites



NAUTILUS LIVE

[ABOUT](#) | [FAQ](#) | [FOR KIDS](#) | [FOR EDUCATORS](#) | [NAUTILUS LIVE THEATER](#)



On the bottom! We are diving at the Anaximander seamounts on a large mud volcano. Our depth is about 1700 meters.

Posted by Chris Roman 46 min 58 sec ago

[MISSION](#)

[BLOG](#)

[PHOTOS](#)

[MAP](#)



[SEND A QUESTION](#)

[JOIN OUR MAILING LIST](#)



00:00

00:00

Current Ship Time: 18:04:52

occasional sighting of closed bivalves (alive?)

4 minutes ago

Main video Quad video

640 960 640 960

Sign up to receive email alerts from Nautilus Live. You can also keep up with the

A man in a light-colored button-down shirt stands in a museum hallway, looking at a large digital screen. The screen displays the title 'The Unknown Ocean' and 'Deep Sea Creatures' above a video of deep-sea life. To the left, a vertical sign reads 'EXPLORER'. The wall behind the man has the words 'INNER SPACE CENTER' in large, spaced-out letters. A smaller tablet is visible in the foreground.

