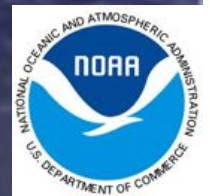


# NOAA Report 2013

## Deep Submergence Science Committee Meeting June 3, 2013



Catalina Martinez, NOAA OER



# OER/NURP Update

- NURP
  - Transitions successful
  - Pisces V to Univ of HI
- OER
  - Leadership transition
  - 2013 budget challenges
  - 2014 President's budget



# Deepwater Canyons 2013

- April 30-May 27
- PI's: Steve Ross (UNCW) & Sandra Brooke (FSU)
- Many partners:
  - NOAA, BOEM, USGS, WHOI, URI, many others
- NOAA Ship *Ronald H. Brown* with *Jason II*
- Areas: mid-Atlantic
- Norfolk & Baltimore canyons
- 3<sup>rd</sup> yr of a 4 yr project
- Leg I: Ecosystems, habitats
  - Confirmed seeps
- Leg II: Archaeology, biology
  - EX 'sharing' of EM 302 spares

[Oceanexplorer.noaa.gov](http://oceanexplorer.noaa.gov)

OCEAN EXPLORER

[Home](#) | [Explorations](#) | [Okeanos Explorer](#) | [Education](#) | [Technology](#) | [History](#) | [Multimedia](#) | [Fun & Facts](#) | [Office Home](#)

## Deepwater Canyons 2013: Pathways to the Abyss

[Mission Logs](#) | [Photos & Videos](#) | [Education](#) | [Background](#) | [Explorers](#) | [Ask an Explorer](#) | [Digital Atlas](#)

### DEEP-SEA CORALS: DIVING INTO THE PAST



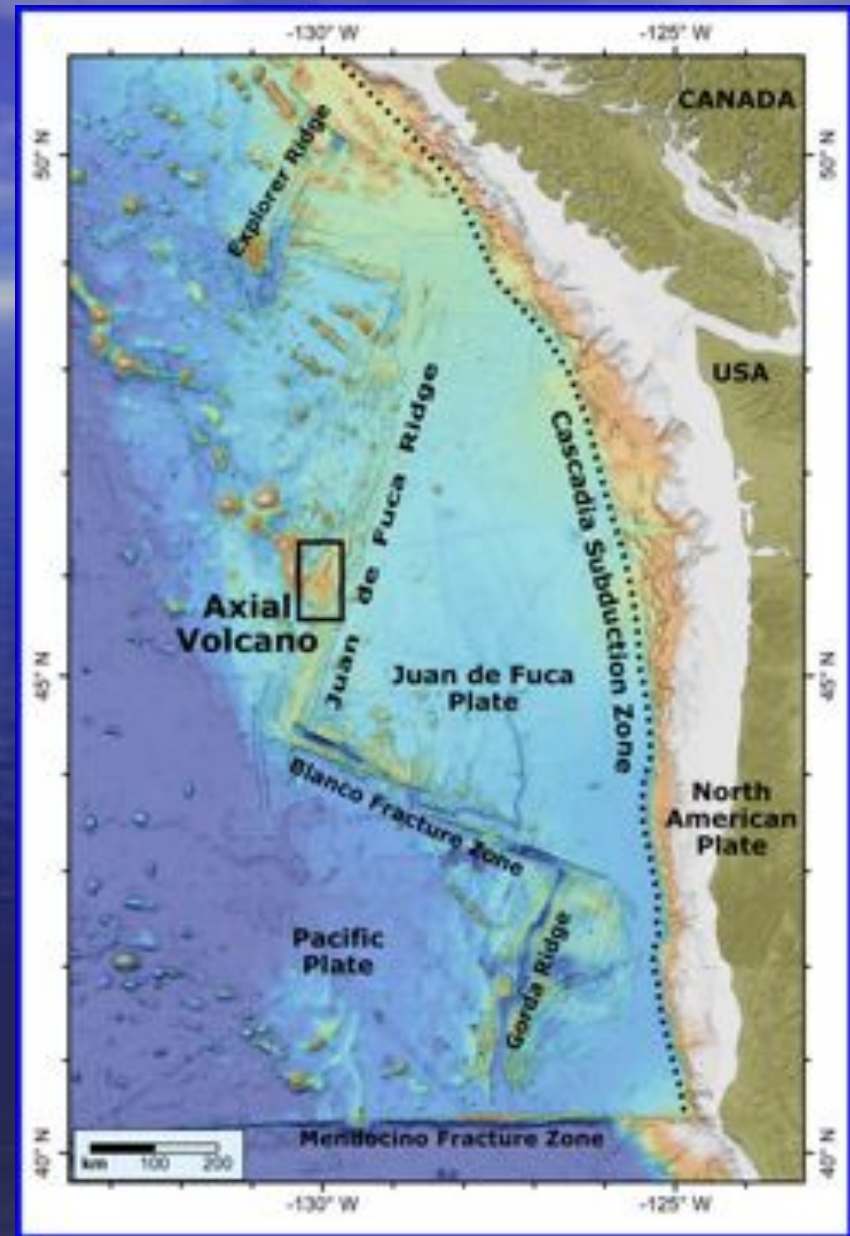
Like a puzzle piece, each coral specimen that scientists collect contributes to understanding of how climate and the environment have varied in different parts of the world and at different times.

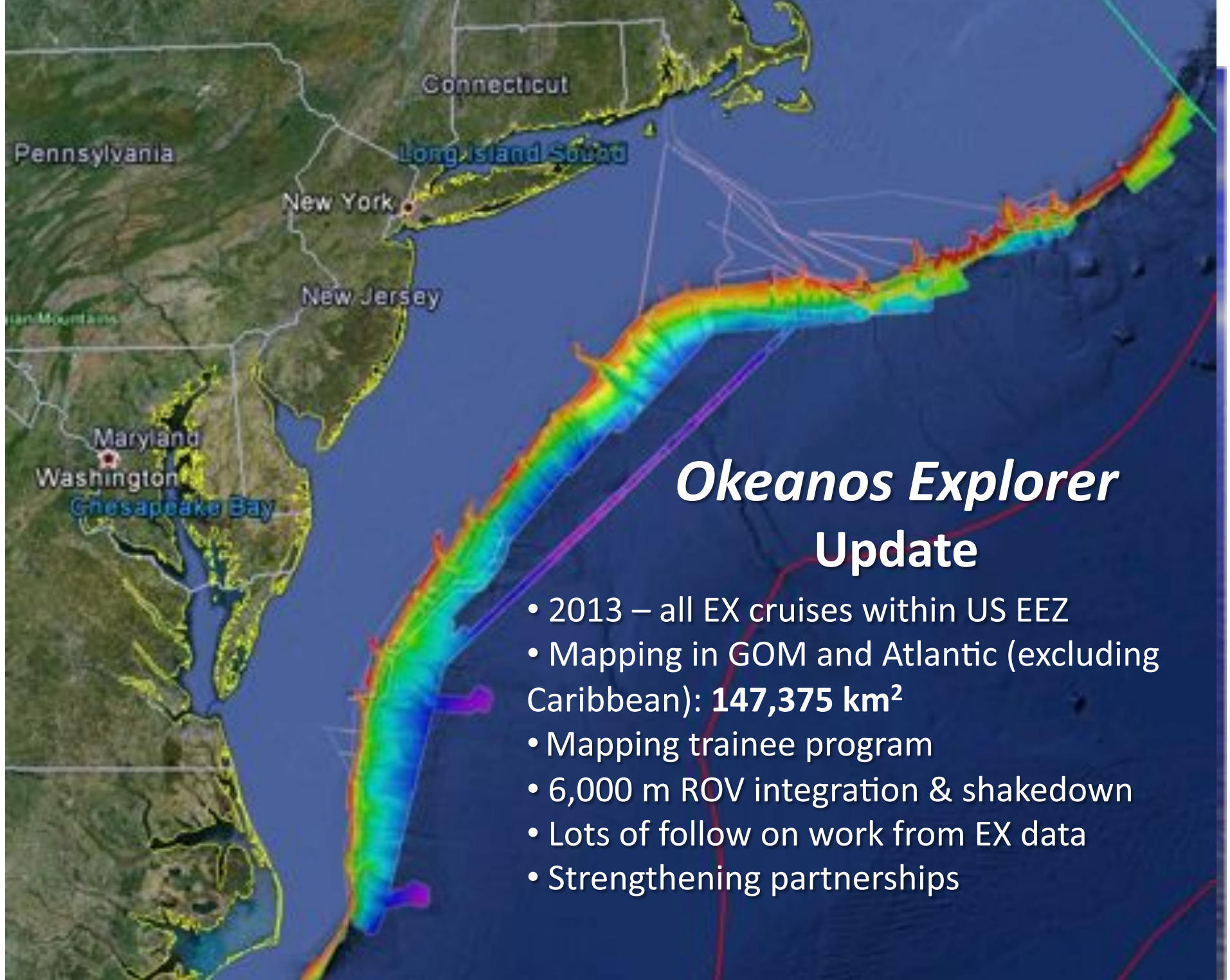


The Deepwater Canyons 2013: Pathways to the Abyss expedition will depart from Charleston, South Carolina, on 30 April on the NOAA Ship *Ronald H. Brown* and will return to Charleston on 27 May. The cruise will be divided into two legs. Work in Leg I will emphasize biological objectives in Norfolk Canyon, with some sampling in Baltimore Canyon. Leg II will focus on archaeological targets in and around the Norfolk Canyon area, with some emphasis on biological objectives. [Read more...](#)

# PMEL NeMO Project 2013

- September 2013: 13 DAS
- PI's: David Butterfield & Bill Chadwick
- Many partners:
  - NOAA, NSF, UNOLS, PMEL, DARPA
- R/V *Thompson* with *Jason II*
- Long-term time series chemistry and microbiology
- Geodetic and seismo-acoustic monitoring





## *Okeanos Explorer* Update

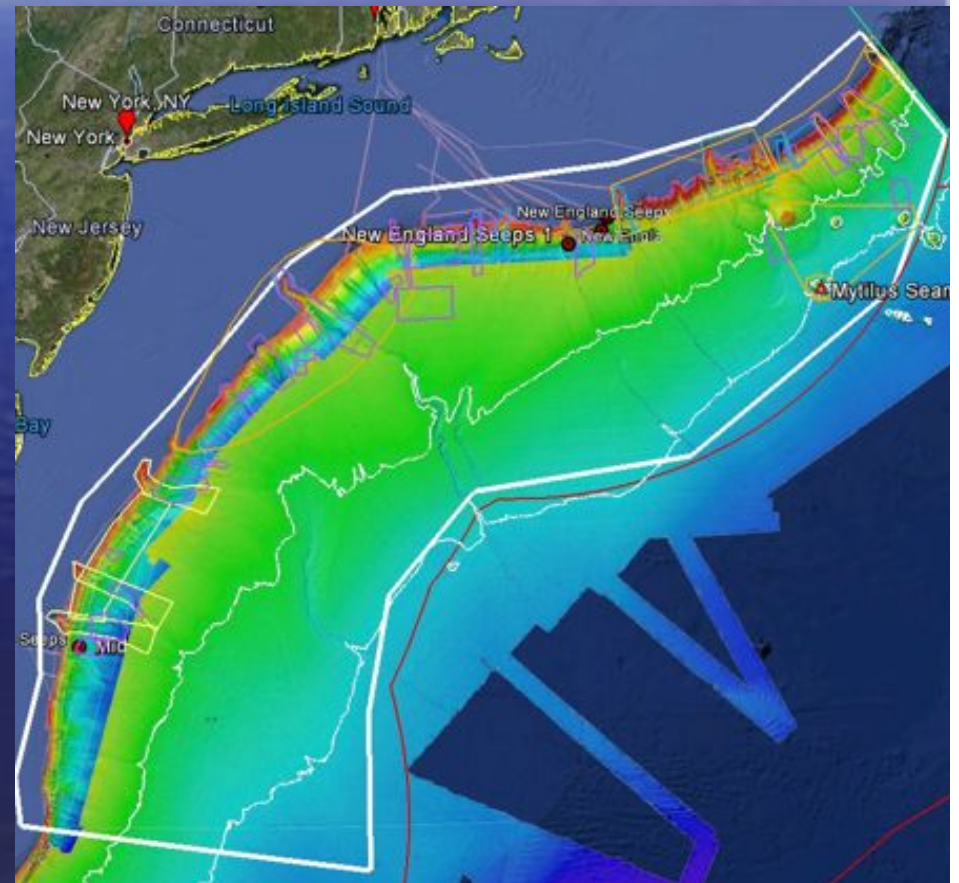
- 2013 – all EX cruises within US EEZ
- Mapping in GOM and Atlantic (excluding Caribbean): **147,375 km<sup>2</sup>**
- Mapping trainee program
- 6,000 m ROV integration & shakedown
- Lots of follow on work from EX data
- Strengthening partnerships



# 2013 EX Field Season

- April:
  - ROV integration
- 5/13-6/6:
  - ROV Shakedown- US East Coast
- 6/11-29:
  - Mapping NE Smts
- 7/8–25 & 7/31–8/17:
  - ROV/mapping Atlantic Canyons

Possible fall/winter Caribbean/GOM work?

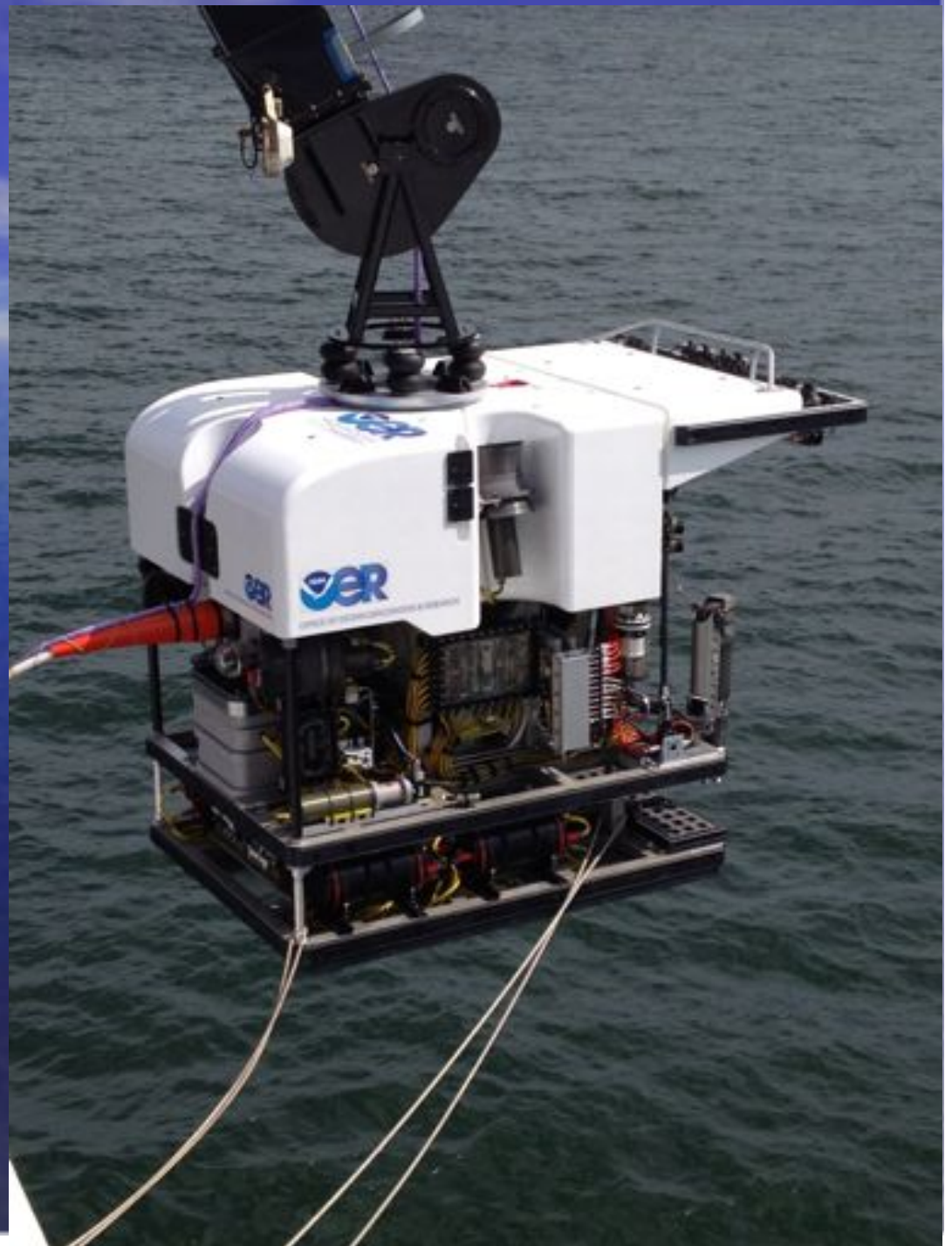




ROV Integration & dockside testing

# OER's New ROV

- Rated to 6,000 meters
- Doppler velocity navigation system
- Two hydraulic 7 function manipulators
- 2 HD & 5 SD cameras
- 96,000 lumens of light mounted on adjustable swingarms





## *Seirios*

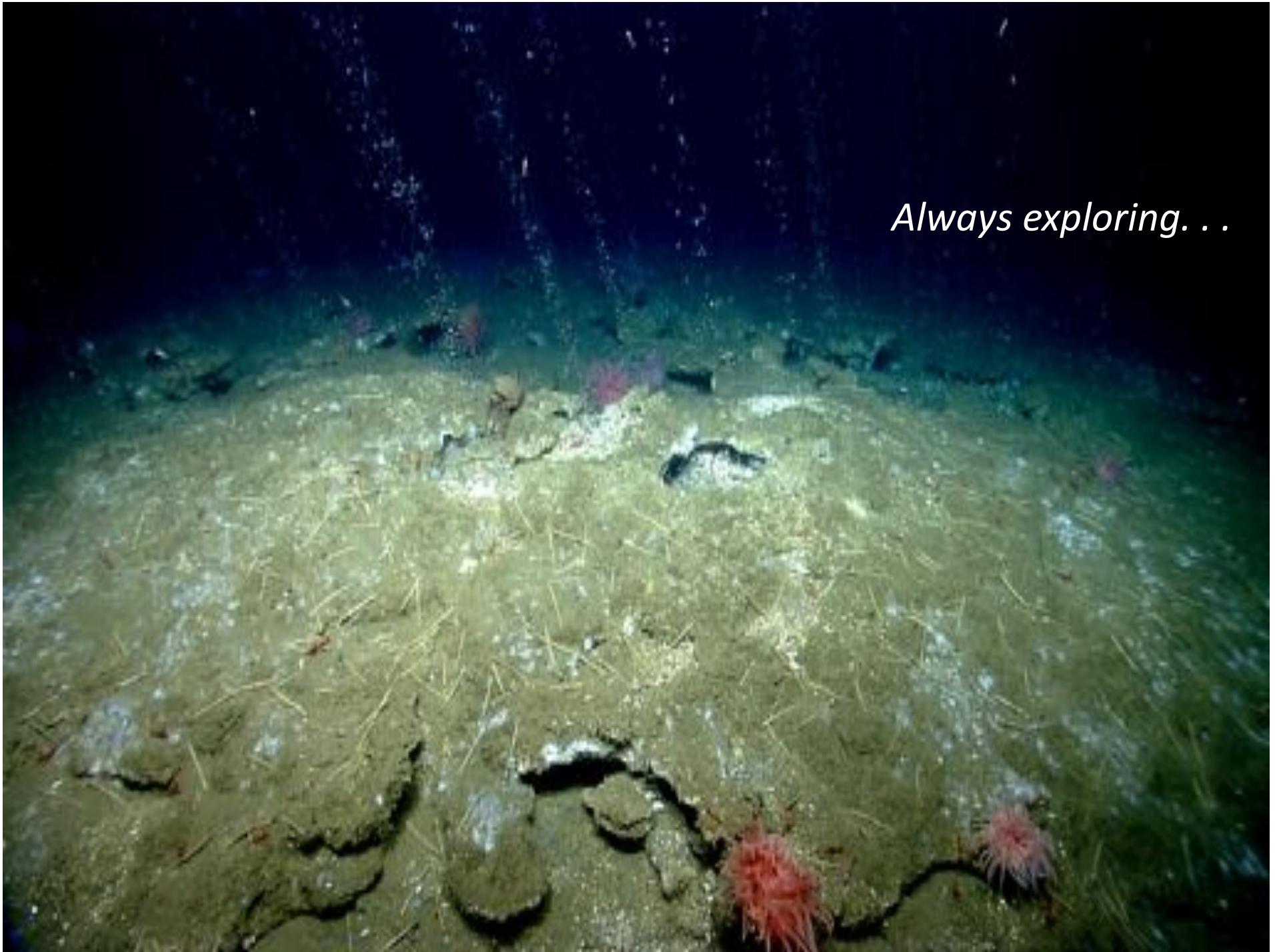
- Rated to 6000m
- 2 HD and 3 SD cameras
- Forward looking dual frequency scanning sonar
- CTD
- 6 HMI lights.



# ROV Shakedown

Deepest test dive so far:  
4095 m Knauss Smt

*Always exploring. . .*





July & Aug: Telepresence-enabled ROV cruises  
Hosting science teams at URI ISC

Live feeds: [Oceanexplorer.noaa.gov](http://Oceanexplorer.noaa.gov)

# NOAA Ship *Okeanos Explorer* 2014

- DRAFT Fleet Allocation Plan 235 DAS
- North Atlantic/Caribbean/GOM
- ROV, Mapping, telepresence

## Priority Challenges

- R&D with new ROV
- Improve science engagement
- Build & strengthen partnerships
- Partnerships/Collaborations to transition E to R



