

A photograph of a beach with walrus ivory arches and a red and white ship in the distance. The scene is set on a dark, sandy beach with a blue sky and ocean in the background. Two large, curved walrus ivory arches stand prominently in the foreground, forming a triangular shape. To the left and right of the arches are wooden structures, possibly remnants of a boat or a fence. In the distance, a red and white ship is visible on the horizon. The overall atmosphere is serene and coastal.

# **CPS and UMIAQ: Barrow Shoreside Support**

**Dr. Karl Newyear, Chief Scientist**

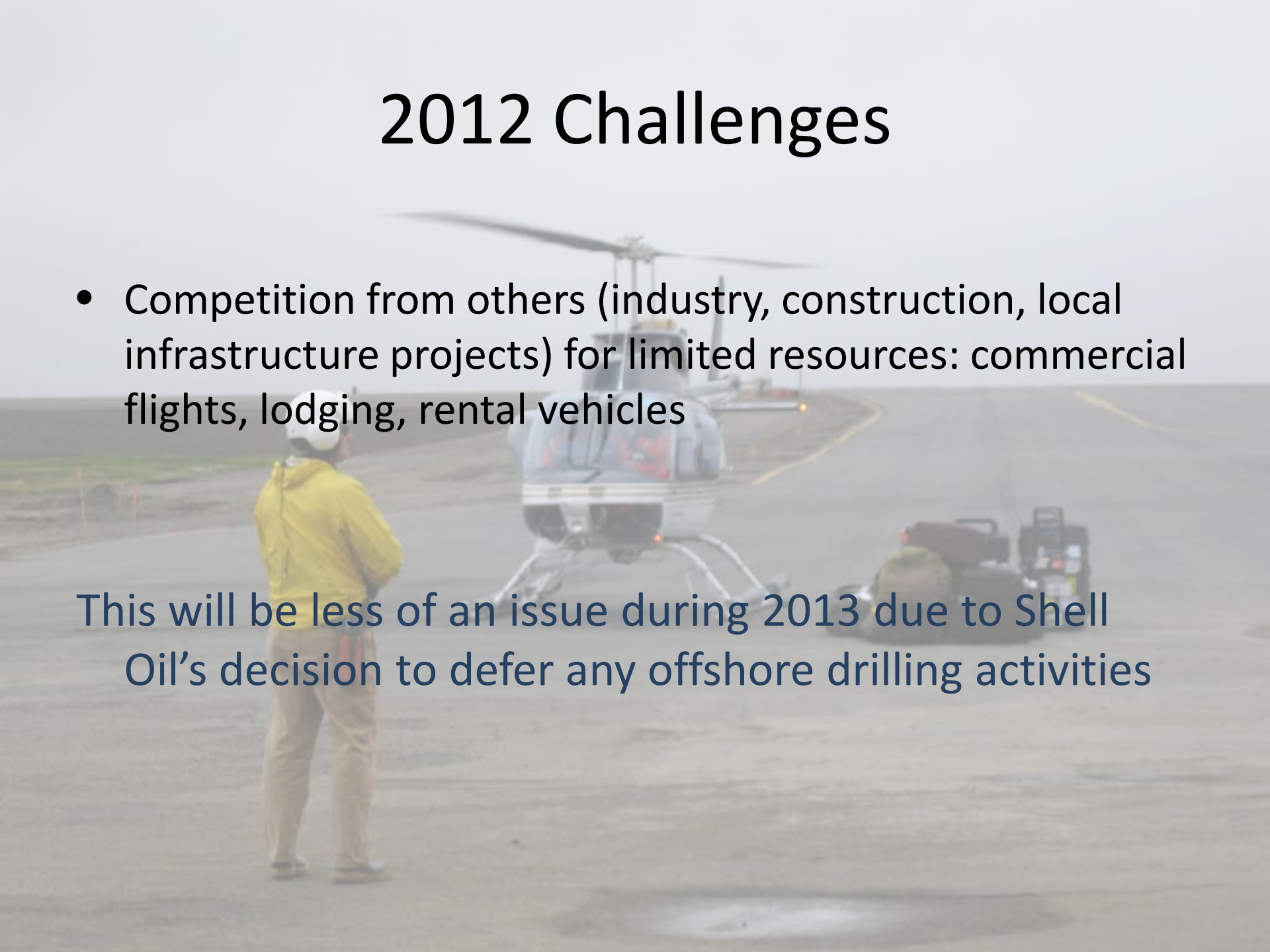
AICC Teleconference

18 June 2013

# 2012 Challenges

- Competition from others (industry, construction, local infrastructure projects) for limited resources: commercial flights, lodging, rental vehicles

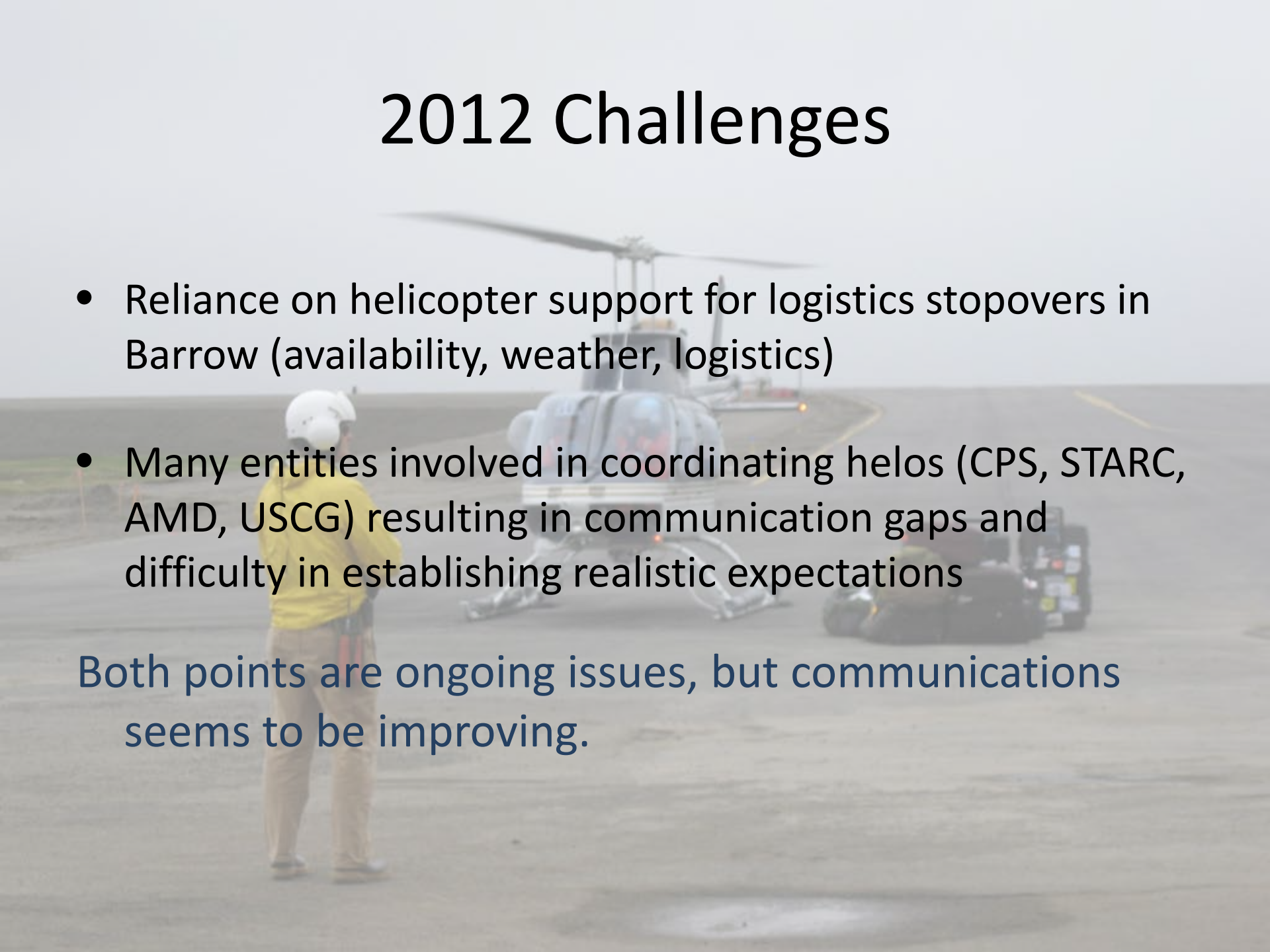
This will be less of an issue during 2013 due to Shell Oil's decision to defer any offshore drilling activities



# 2012 Challenges

- Reliance on helicopter support for logistics stopovers in Barrow (availability, weather, logistics)
- Many entities involved in coordinating helos (CPS, STARC, AMD, USCG) resulting in communication gaps and difficulty in establishing realistic expectations

Both points are ongoing issues, but communications seems to be improving.



# Plans for 2013

- Create new Science Support web page, and coordinate relevant content with [www.icefloe.net](http://www.icefloe.net)
- Update Barrow Logistics Stopover protocols

Still working on our documentation.



# Plans for 2013

- Coordinate with AMD and STARC for project-specific logistics in Barrow

Communications are ongoing. Basic logistical operations for logistics stopovers in Barrow will be same as previous years.



# Plans for 2013

- Continue to provide Community Observers for USCG cruises; Researchers responsible for Marine Mammal Observers if required

CPS is planning to provide Community Observers for HLY1302 and HLY1303 cruises.





**Questions?**

**QuyanaKpak (Thank You)**