

Summary of 2013 operations and the 2014 scheduling process



UNOLS Ship Scheduling Committee Report

Committee Chair – Stewart Lamerdin

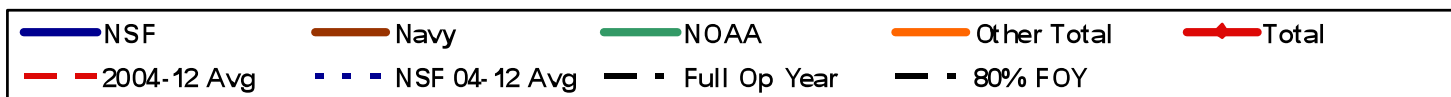
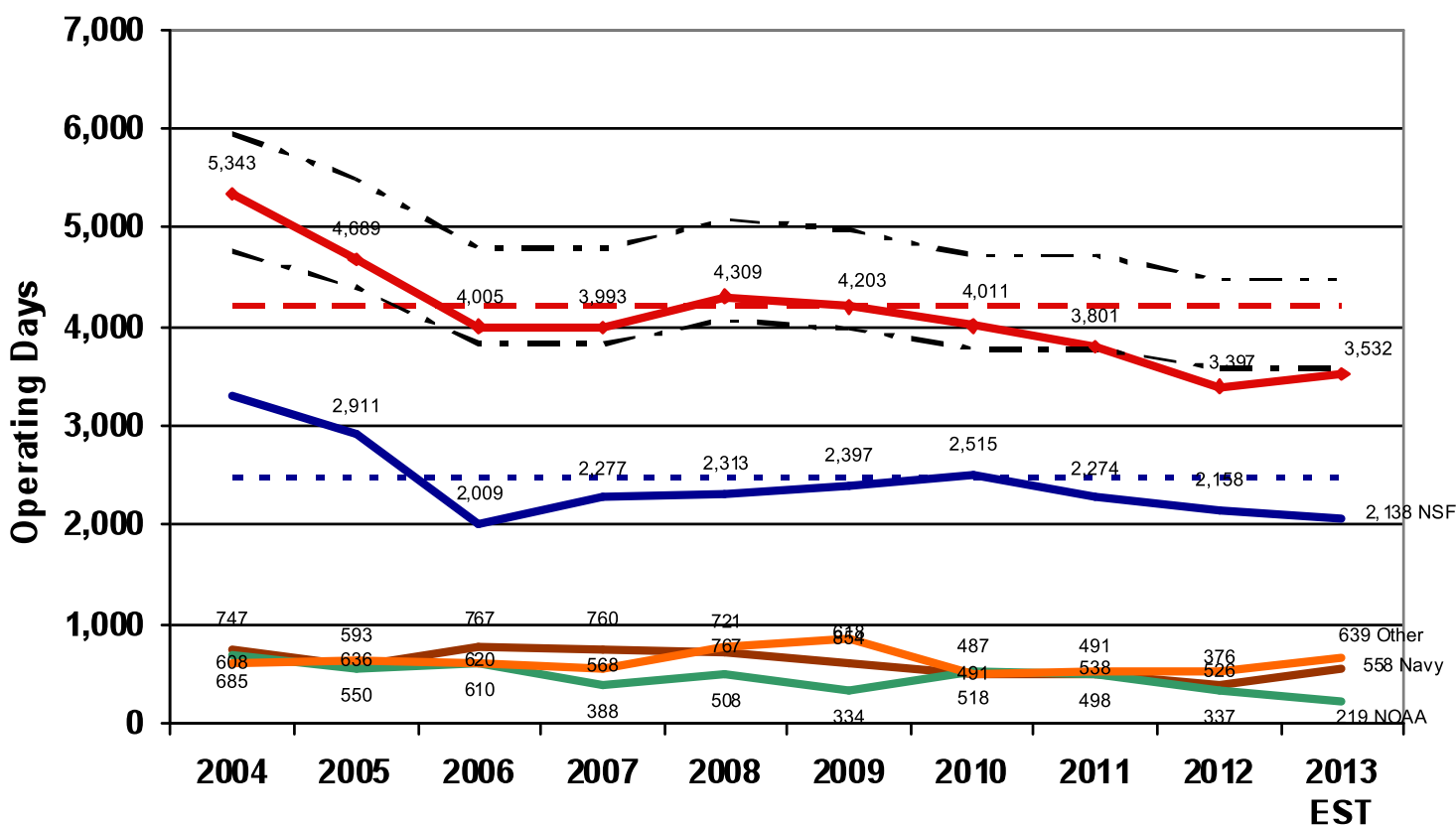
Committee Vice Chair- Liz Brenner

Fleet Operations for 2013 & Outlook for 2014



SSC

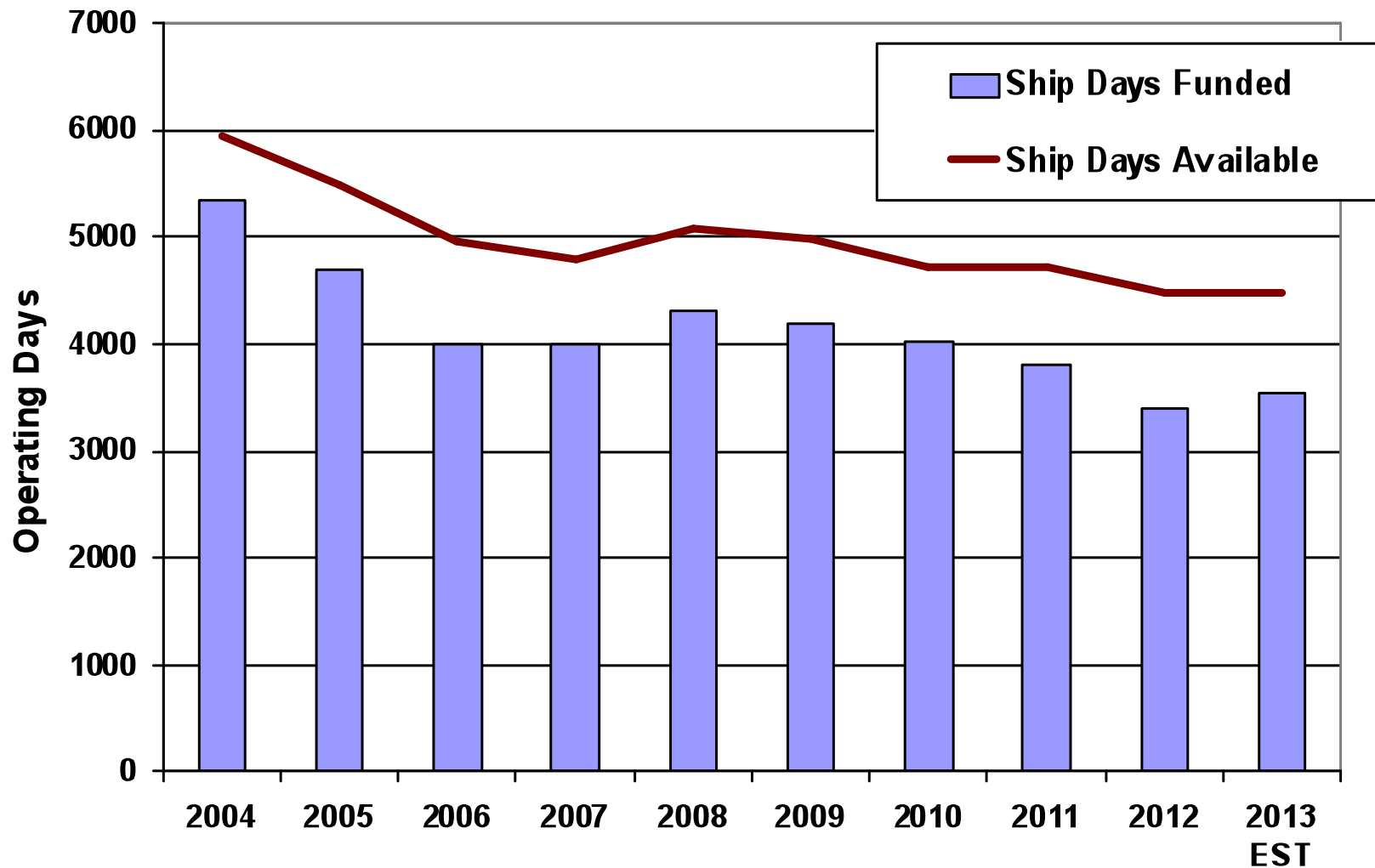
UNOLS Fleet Utilization (2004 - 2013)





SSC

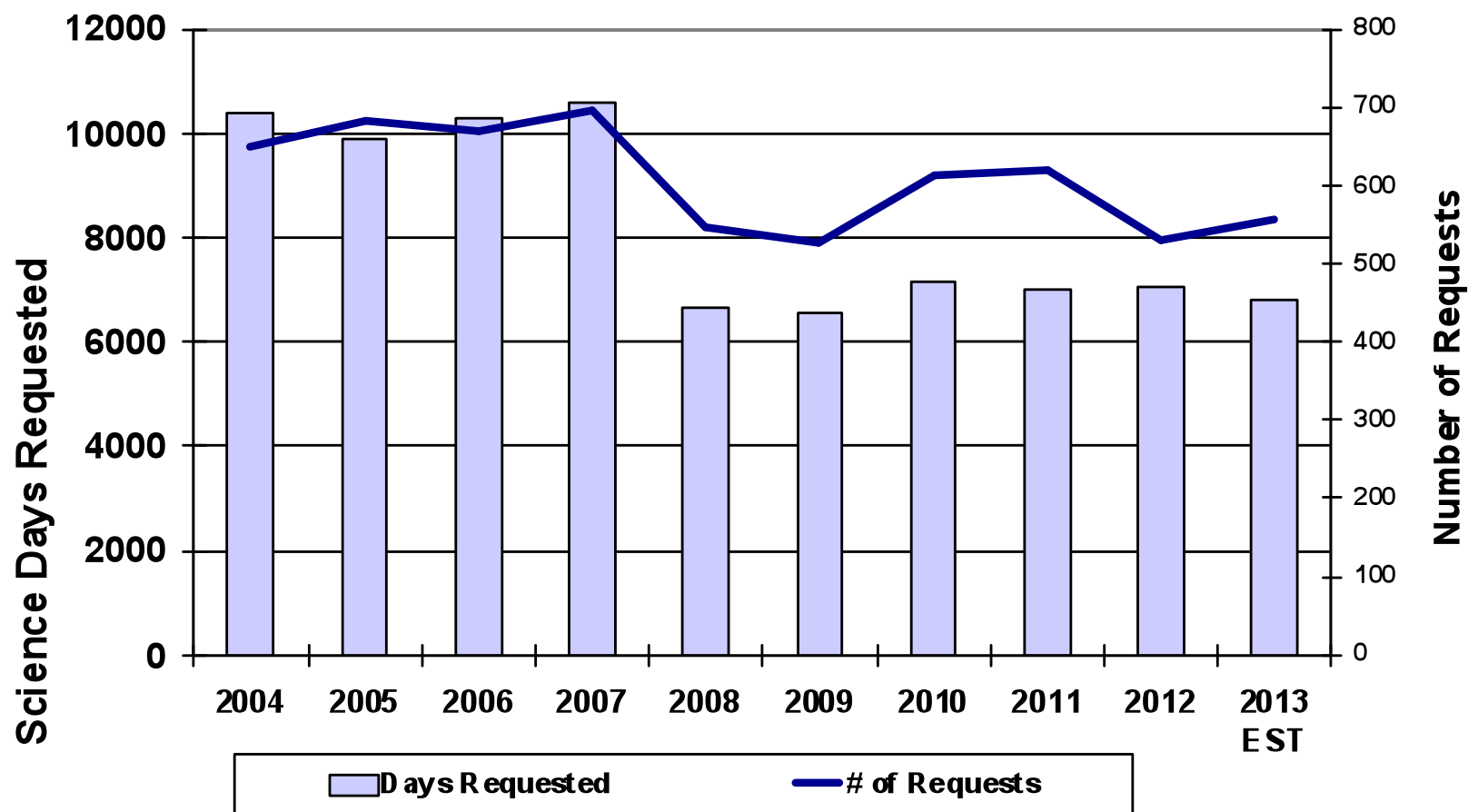
Ship Days Funded/Pending and Days Available





SSC

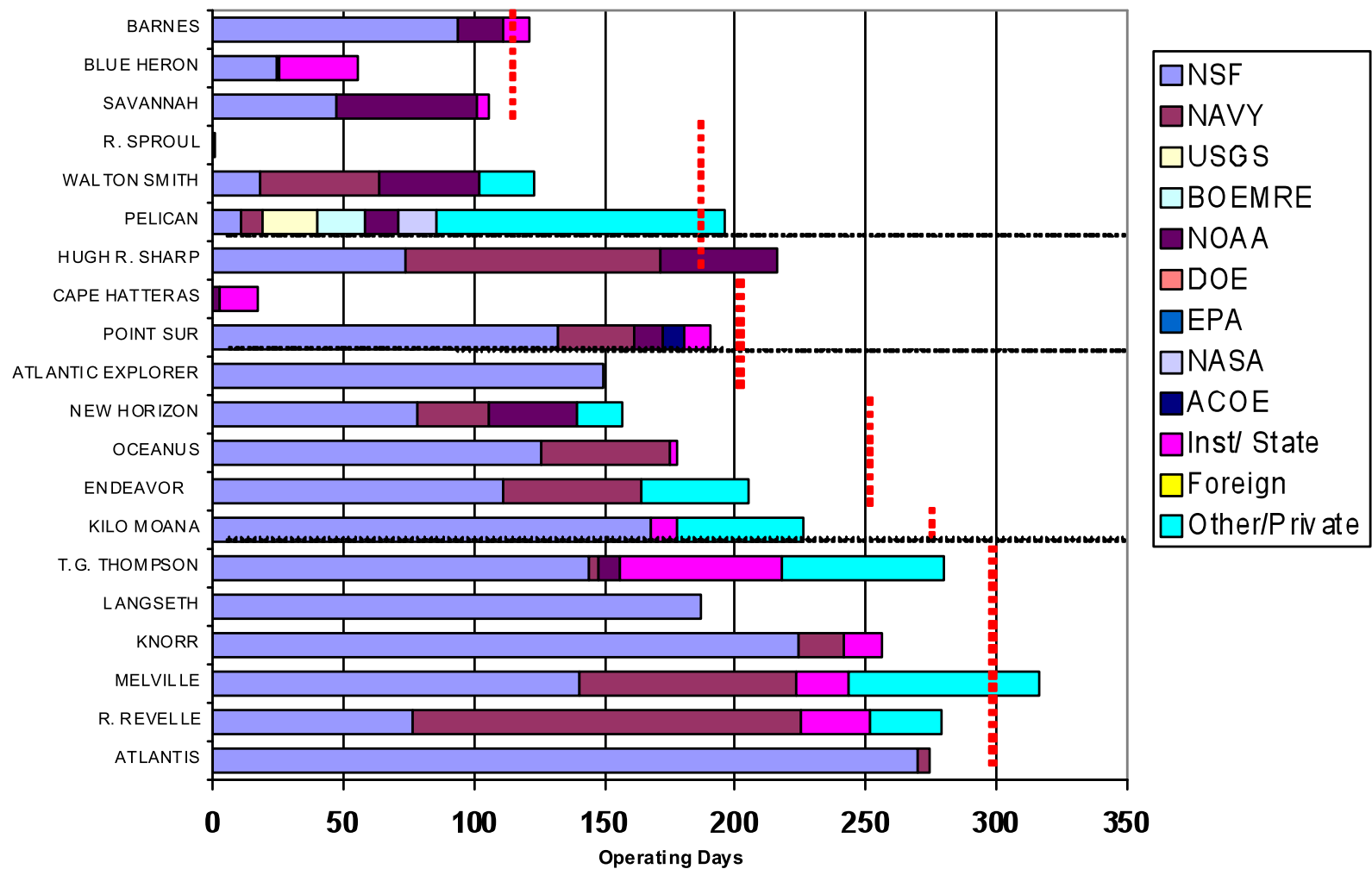
Ship Time Request Demand





SSC

2013 Ship Schedules





2014 Process - UPDATE

2014 Days as of 26 Feb 2013- Source: UNOLS STRS database

Class	Funded- science days	Pending- science days	To Be Submitted- science days	Total Estimated days for 2014
Global & Ocean Class	1001 (x 1.35= 1351)	723 (x1.35= 976)x 30 % success rate=293	584 (x1.35= 788)x 30% success rate= 236	1880
Intermediate	313 (x1.35= 422)	168 (x1.35=227)x30% success rate=68	192 (x1.35=259)x30% success rate= 78	568
Regional	100 (x1.35=135)	279 (x1.35=377)x30% success rate = 113	67 (x1.35=90)x30% success rate=27	275
Coastal/Local	45 (x1.35= 61)	258 (x1.35=348)x30% success= 104	253 (x1.35=341)x30% success rate= 102	267
Total				2990 days

Operating days = Science days times 1.35 factor for port days, transits, etc

Global/Ocean Class- Knorr, Atlantis, Langseth, Revelle, Melville, Thompson, Sikuliaq, Kilo Moana, plus Jason

Intermediate Class- Oceanus, Endeavor, Atlantic Explorer, New Horizon

Regional- Sharp, Pt. Sur,

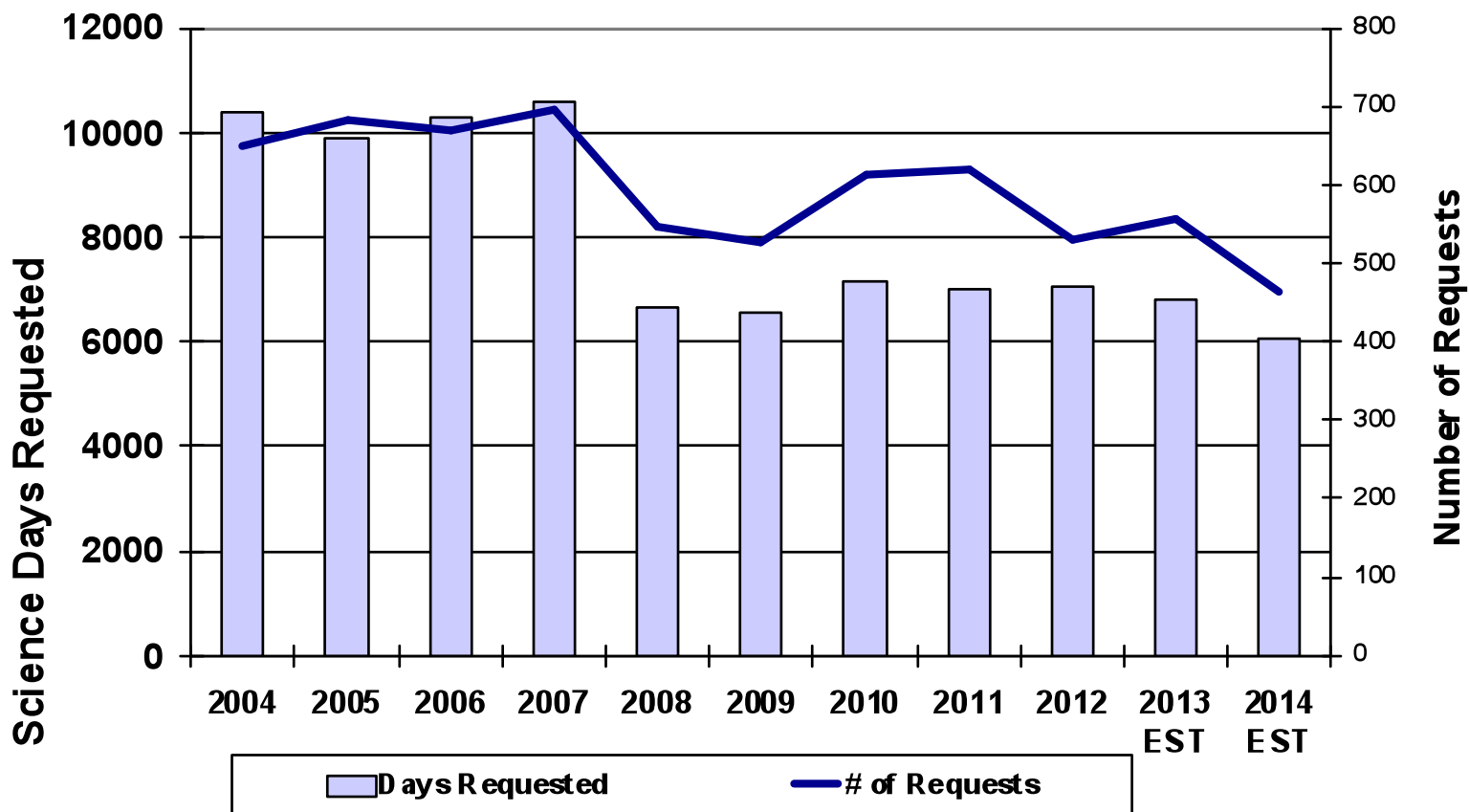
Coastal/Local- Sproul, Pelican, Walton Smith, Savannah, Blue Heron, Barnes

Extra Slides



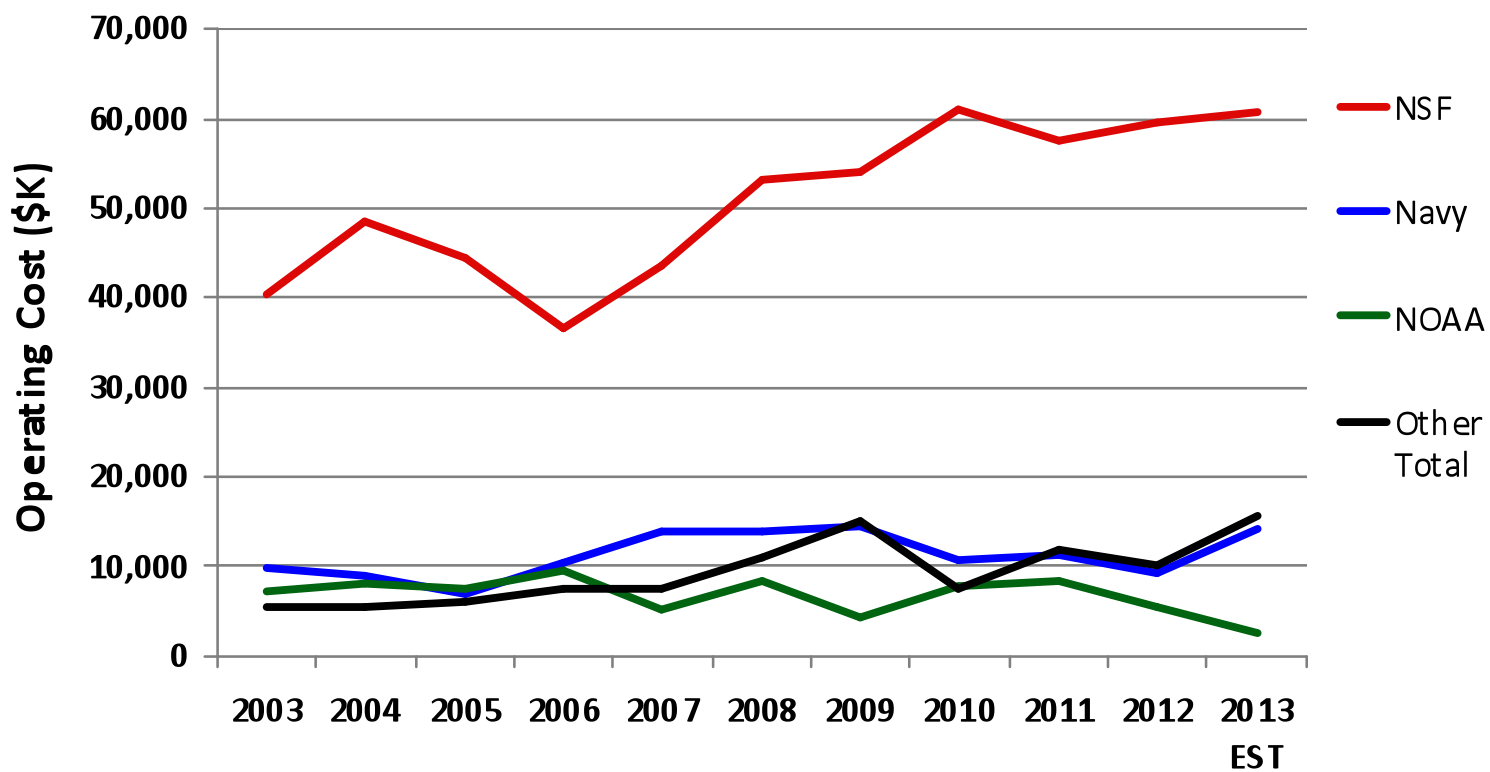
SSC

Ship Time Request Demand





Fleet Cost by Agency





Ship Utilization by Class: 2004 - 2013

