

R/V SIKULIAQ

RVTEC February 2013



UNIVERSITY OF ALASKA FAIRBANKS

America's Arctic University

Characteristics

Length, Overall	LOA	261 feet
Length, Design Waterline	LWL	237 feet 0 inches
Beam, Max across reamer	Bmax	52 feet
Beam, Max across hull amidship	Bmidship	48 feet
Depth, Keel to Main Deck	D	28 feet
Draft, Design Waterline	TDWL	18 feet 9 inches
Freeboard, Design Waterline	FDWL	8 feet 9 inches
Displacement at Design Waterline		3,665 long tons
Propulsion Power	P	5,750 BHP



UNIVERSITY OF ALASKA FAIRBANKS
America's Arctic University

Performance

Endurance	45 days	
Endurance, Hotel Only	60 days	
Range	11 knots	9,000 NM preliminary
Cruise Speed	transit speed	11 knots
Max Speed, Calm Open Water	V _{calm}	14.2 knots
Max Speed, 4 M Sea (13.1 ft)	V _{ss 5}	12.3 knots
Level Ice at 2 knots	Ice thickness	3 feet



UNIVERSITY OF ALASKA FAIRBANKS

America's Arctic University

Capacities and Working Area

Science Berths	24
Crew Berths	20 crew plus 2 marine technicians
Science deadweight	100 long tons
Aft Deck 20' ISO Van Services and Twist Lock	3 Fixed locations
Fwd Deck 10' ISO Van Services and Twist Lock	1 Fixed location
Science storage	8,000 cubic feet
Science Labs	2250 square feet
Deck Working Area	4360 square feet



Move out from Building 10



UNIVERSITY OF ALASKA FAIRBANKS

America's Arctic University

Bridge and 04 Deck Install



UNIVERSITY OF ALASKA FAIRBANKS

America's Arctic University

SIKULIAQ SHIPYARD OFFICE



UNIVERSITY OF ALASKA FAIRBANKS

America's Arctic University

Sonar Flat



UNIVERSITY OF ALASKA FAIRBANKS

America's Arctic University

Centerboard Deployed



UNIVERSITY OF ALASKA FAIRBANKS

America's Arctic University

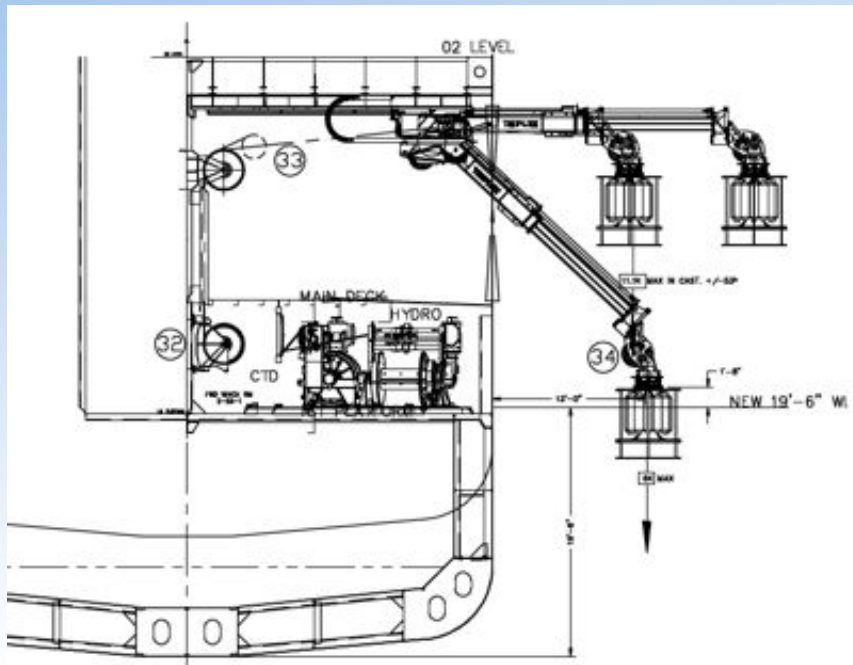
Appleton Cranes



UNIVERSITY OF ALASKA FAIRBANKS

America's Arctic University

Baltic Room Load Handling Boom



UNIVERSITY OF ALASKA FAIRBANKS

America's Arctic University

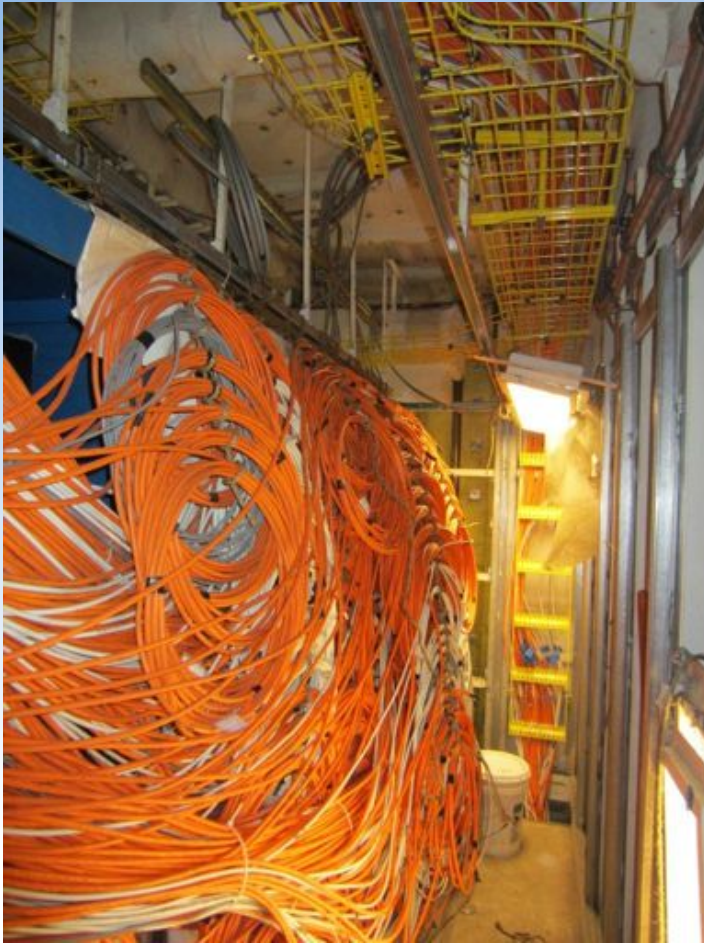
Forward Mast with Scientific Instrumentation Platform



UNIVERSITY OF ALASKA FAIRBANKS

America's Arctic University

“Be Careful of What You Ask For”



Marine Grade CAT7



UNIVERSITY OF ALASKA FAIRBANKS

America's Arctic University

VOKA-MLAN 1000



UNIVERSITY OF ALASKA FAIRBANKS

America's Arctic University

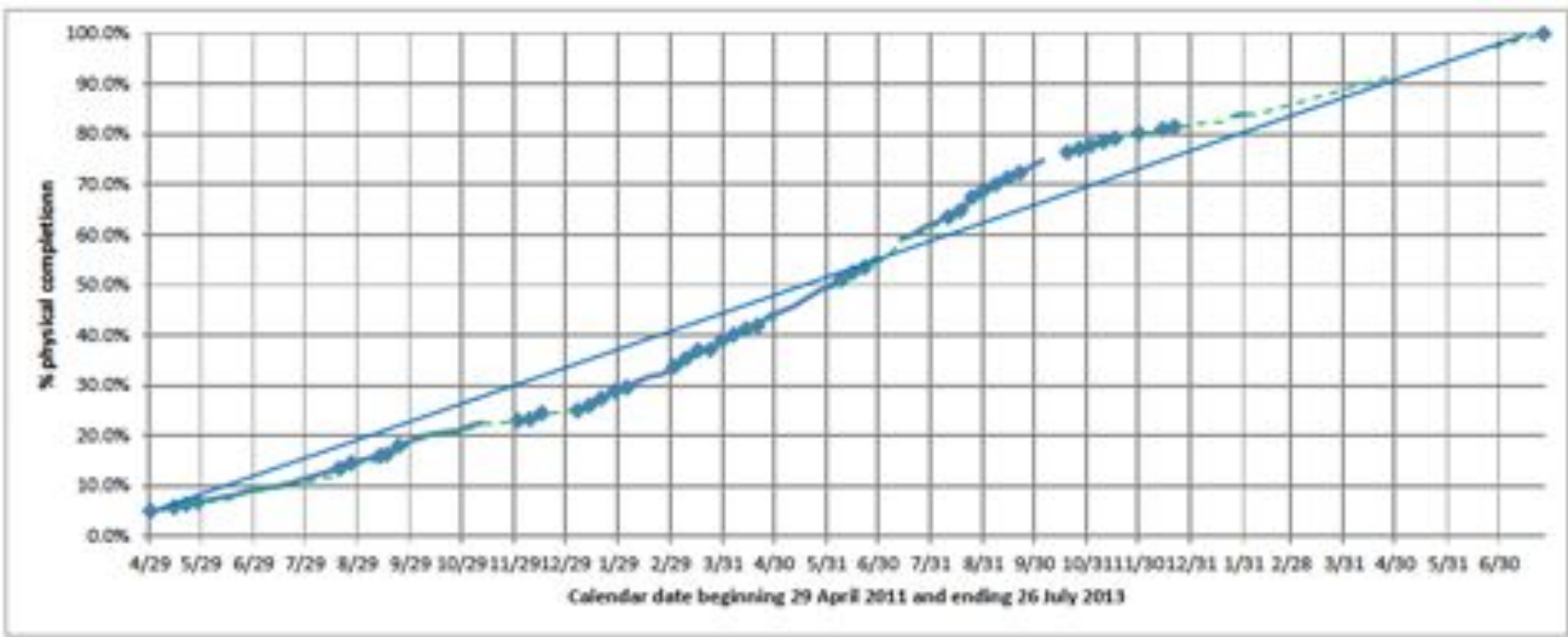
Launched on October 13, 2013



UNIVERSITY OF ALASKA FAIRBANKS

America's Arctic University

SIKULIAQ Progress Chart



UNIVERSITY OF ALASKA FAIRBANKS
America's Arctic University

Tentative Date	Schedule
August 2 nd 2013	UAF takes delivery of the vessel at MMC
August-September 2013	Dockside MMC (Outfit and Crew Training)
September 28 th 2013	Depart MMC
October 2013	Port Call Montréal
October 2013	Port Call WHOI
October 2013	Sonar Trials
November 2 nd 2013	Port Call DC
November-December 2013	Deep water Trials (Puerto Rico)
December 2013	Panama Canal
January 2014	Coring trials off Oregon
January 2014	Astoria - NSF Inspection
February 2014	Seward
April 2014	Ice Trials
May 2014	Underwater Radiated Noise Trials
May/June 2014	Dry Dock
Mid June 2014	Ready for Science



UNIVERSITY OF ALASKA FAIRBANKS

America's Arctic University