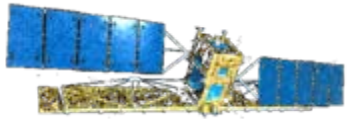




U.S. National Ice Center



Arctic Icebreaker Coordinating Committee

Caryn Panowicz

Operations Technical Advisor

U.S. National Ice Center

17 Jan 2013



USCG



USN



NOAA



U.S. National Ice Center



- **Overview**
What's New?

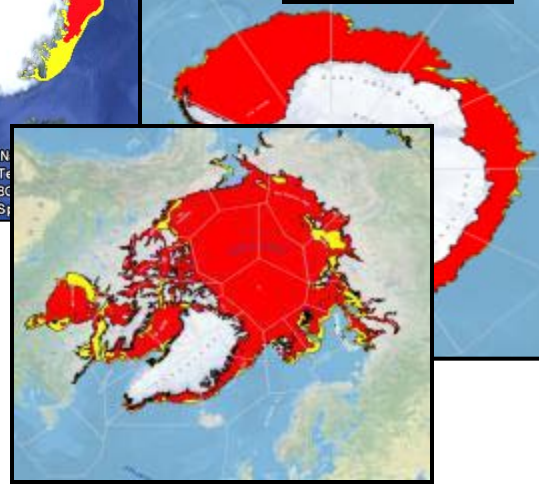
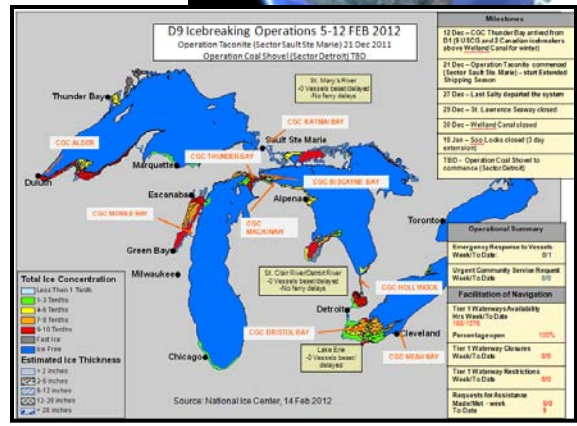
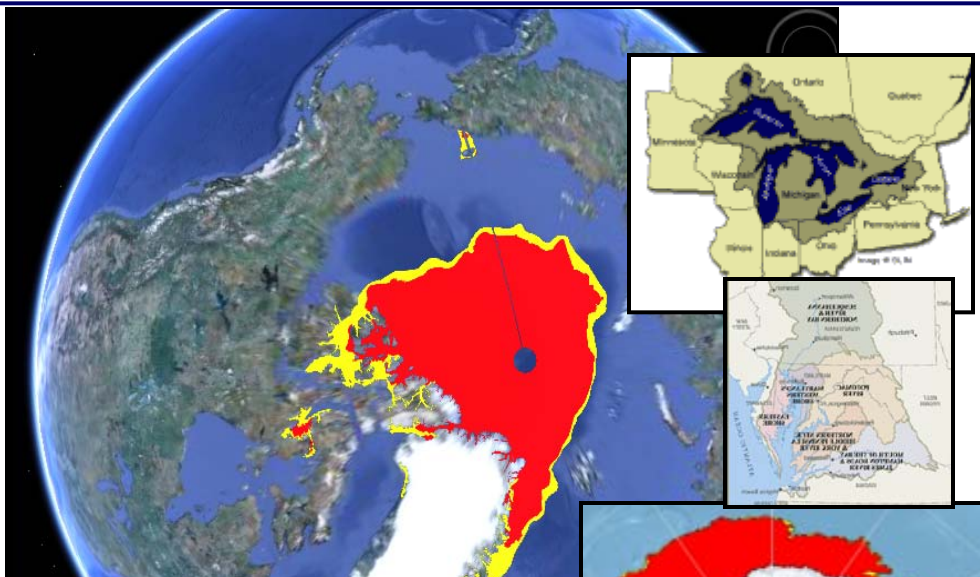
Director/Commanding Officer
Personnel

Increase in maritime support

Increase tactical support

New product suite – no .pdf

System upgrade-Web



Mission: Provide the highest global ice and snow (including the Great Lakes and the Chesapeake and Delaware Bay systems) analysis and forecasting services for the maximum benefit of United States government interests.



U.S. National Ice Center



Personnel -

CDR Timothy Smith - Director, Commanding Officer

Transition to civilian workforce.



Civilian Analysts – 13
Contractors – 3
Military – 1 USCG (after Summer 2013)

7 day/week

Core hours: 0830-1430

CDO: 301-943-6977

OPS Watchfloor: 301-817-3975

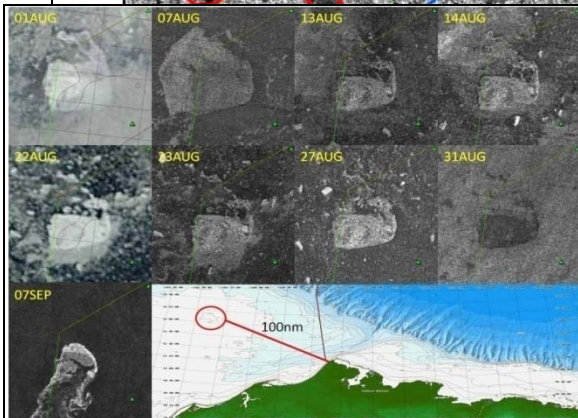
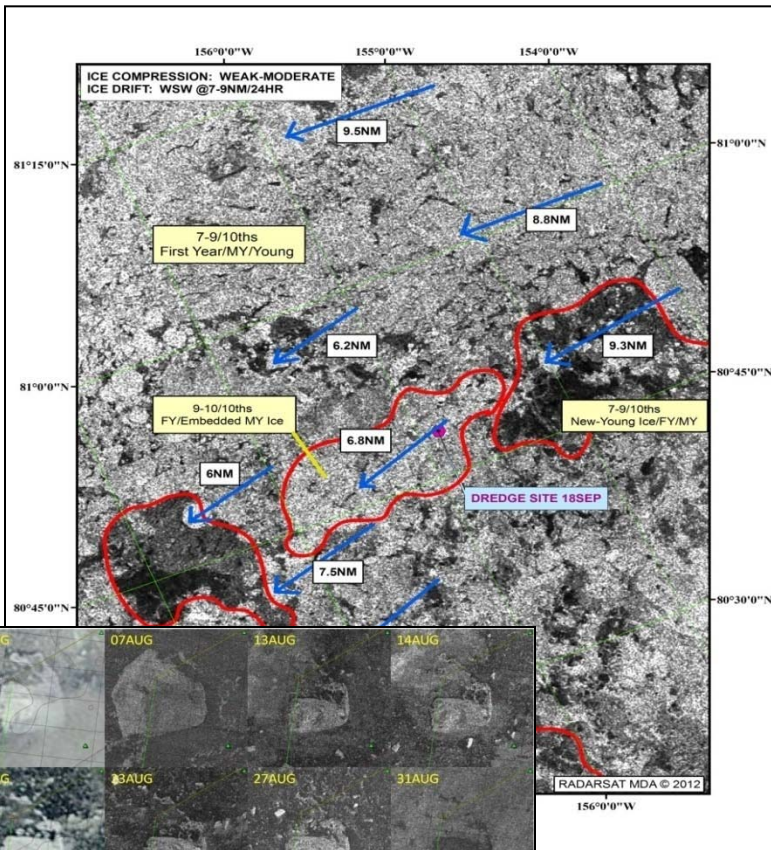




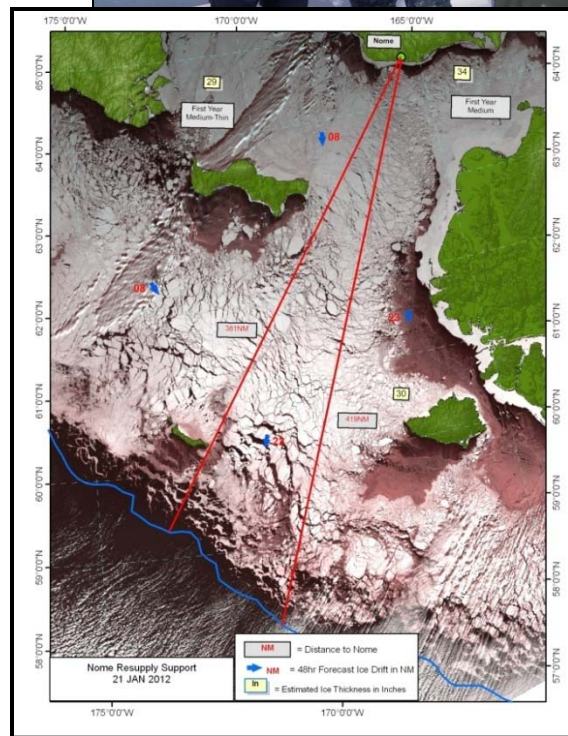
U.S. National Ice Center



Personnel – What's that mean?



C
O
N
T
I
N
U
I
T
Y





U.S. National Ice Center



On Board Ice Analysis

- SAR Imagery
- Reach back to NIC
- Training evolution vice experienced analyst
- Science team resp for berthing



USCG Photo



USCG Photo

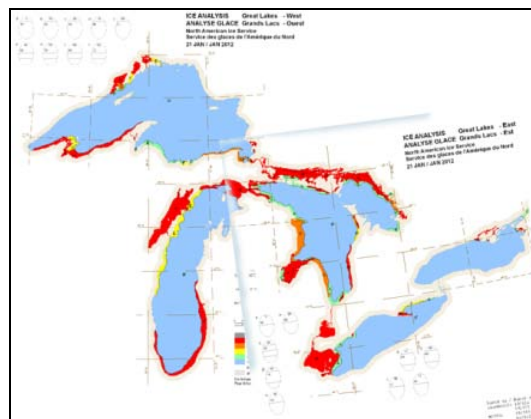
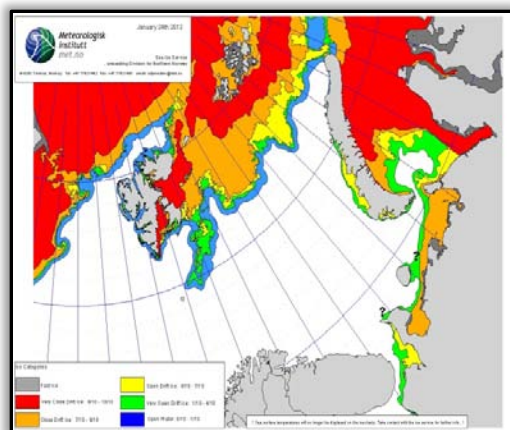
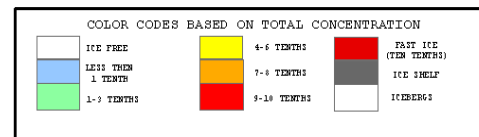
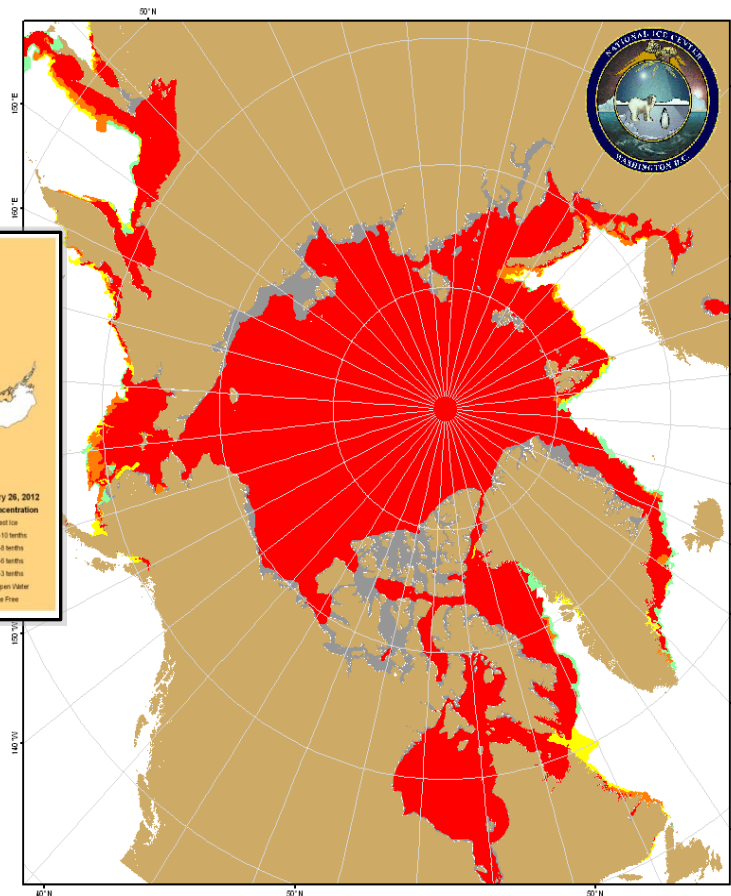
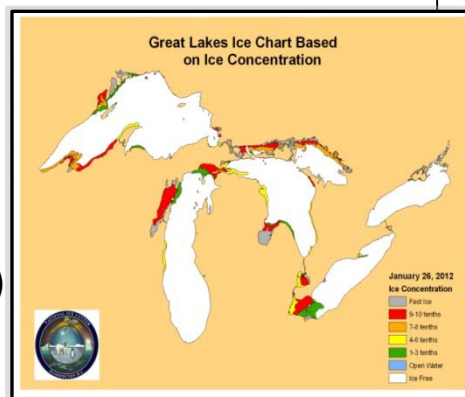


U.S. National Ice Center



Revise Product Suite –

- New daily concentration product –similar to Great Lakes products
- Increase frequency
- Model input
- Eventual thickness product
- Increase output format
- Relevant modeling effort (USN)





QUESTIONS?

caryn.panowicz@noaa.gov

