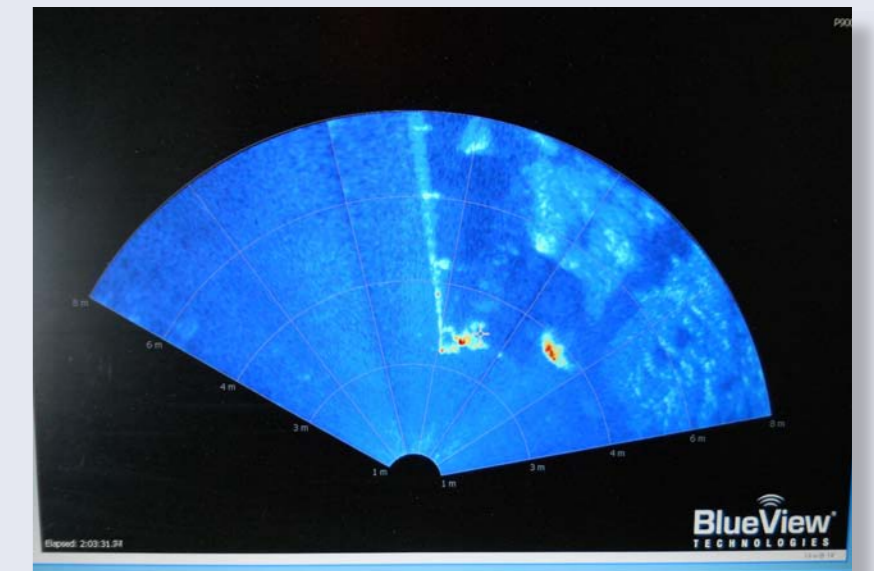


Introducing the SIO/STS ROV



Main Camera:
INSITE PACIFIC Pegasus
18:1 zoom
Macro auto focus
Low light sensitivity

Main Lights (2):
DEEP SEA POWER & LIGHT
SeaLite Matrix-1
Equivalent to 150W HID or
500W Halogen
Fully dimmable using AC
phase control
Thermal monitoring allows
operation in air or water
Very long LED lifespan



Forward-Looking Sonar: BLUEVIEW P900-130D
2D multibeam imaging sonar
Operating frequency: 900 kHz
Field of view: 130 degrees
Maximum range: 100 m
Optimal Range: 2 - 60 m
Range resolution: 1 inch
Beam width: 1 x 20 degrees
Number of beams: 768

DOER H2000 ROV SPECIFICATIONS

Depth Rating: 2000 m
Dimensions: 60"L x 39"W x 38"H
Weight (in air): 895 lbs / 406 kg
Payload: 160 lbs / 72.5 kg
Thruster Power: 7.5 HP
327 pounds Forward
200 pounds Reverse
187 pounds Up
112 pounds Down
137 pounds Lateral

Thruster Configuration:
Six inch (ID) ducts with integrated control valves
Optimized asymmetric propellers
Quad horizontal thrusters
Dual vertical thrusters

Flight Auto Functions:
Auto Depth
Auto Heading
Auto Altitude (with optional altimeter)
Go to Depth
Go to Altitude
Go to Heading

Video/Data Channels:
Three simultaneous video signals (NTSC/PAL)
Six data, 2 x RS-485 and 4 x RS-232
One Ethernet
HD fiber ready
On Screen Overlay

Hydraulic Valve Network:
RS-485 controlled
In modules of six valves
One module for
manipulator (1 spare valve)
One module for main
camera (4 spare valves)

Dual 5-function Joysticks:
Pilot: forward/aft, port/
starboard, up/down,
2 x Auto functions
Co-pilot: manipulator,
pan/tilt/zoom main camera

SIO/STS ROV AUXILIARY COMPONENTS:

Cameras (2): DEEP SEA POWER & LIGHT Nano SeaCam
Sensor: 1/3 inch Sony Color CCD II 410K
620 TVL resolution
Angle of view (water): 59 (H) x 44 (V) x 72 degrees (D)
Thermal monitoring allows operation in air or water

Lights (2): DEEP SEA POWER & LIGHT SeaLite Six
1200 Lumens (in water)
65 degree beam pattern
fully dimmable
50,000+ hours lifespan

Altimeter: BENTHOS 916D
Operating frequency: 200 kHz
Beam width: 14 degrees
Range: 100 m

CTD: SEABIRD ELECTRONICS SBE49
Pump-controlled, T-C ducted flow
Conductivity, Temperature and Pressure measurements @ 16 Hz
Conductivity and temperature sensors same as 911plus
Druck 3000m pressure gauge
EEPROM-stored calibration coefficients
No support for auxiliary sensors



5-Function Manipulator: DOER SeaMantis
Proportional control
Depth rating: 3000 m
360 degree wrist rotation
Shoulder L/R: +13/-90 = 103 deg
Shoulder U/D: +90/-15 = 105 deg
Elbow U/D: +66/-180 = 246 deg
Jaw: closing force of 200 lbs (min)
Full payload: 150 lbs

