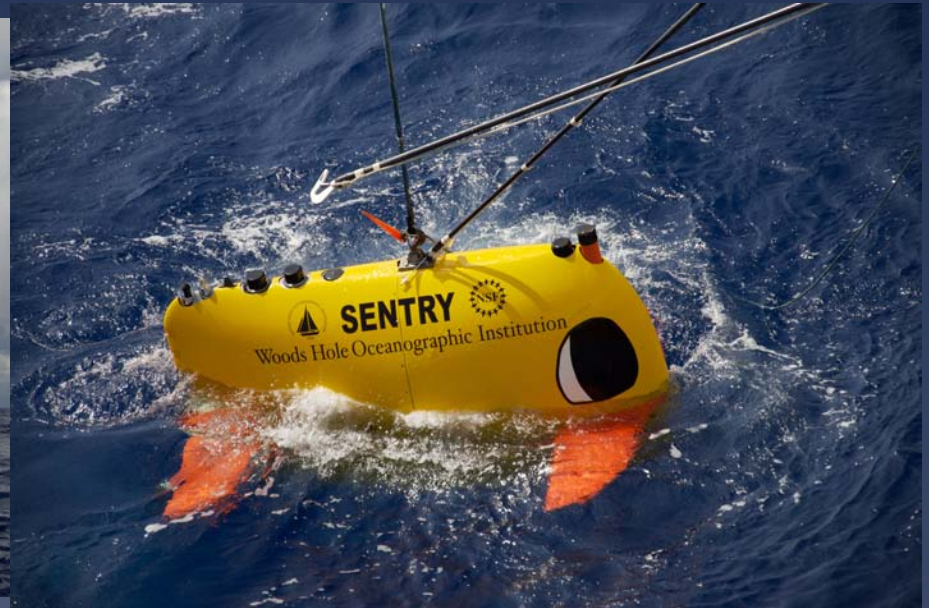


A deep-AUV Magnetic and Seismic Study of the Hawaiian Jurassic Crust –The Global Significance of Jurassic Magnetic Anomalies

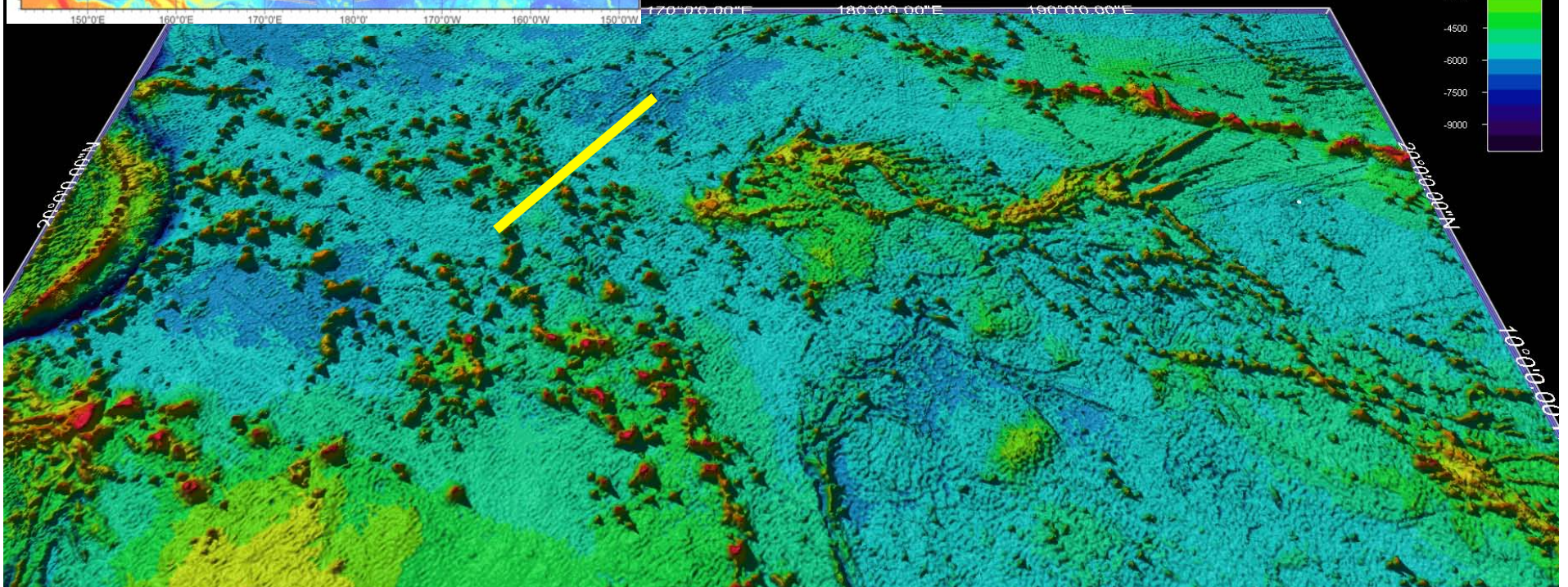
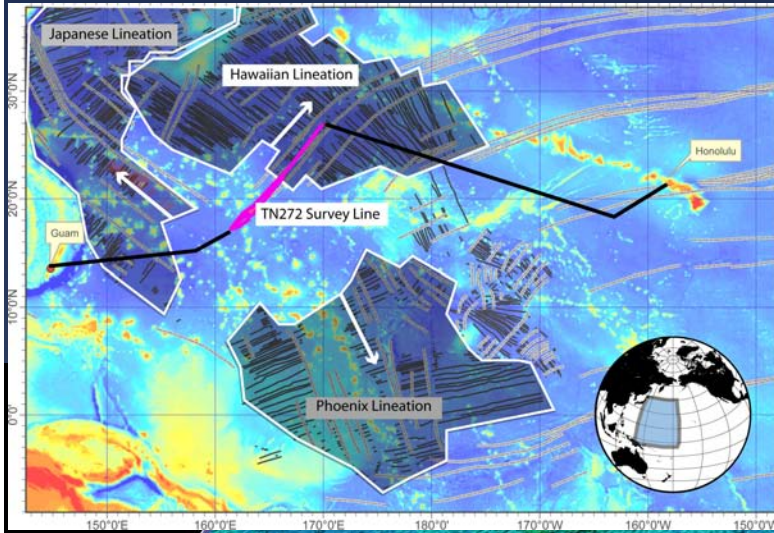


NSF-OCE 1029965 (Nov. 5th – Dec. 17th 2011)

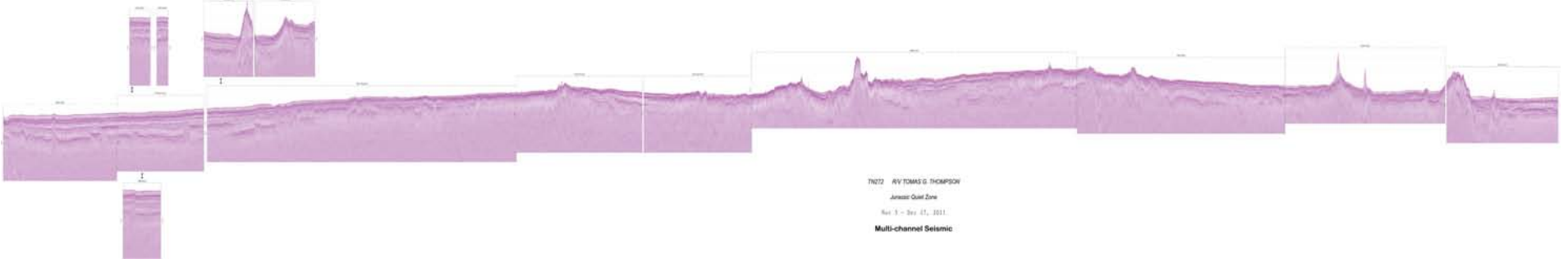
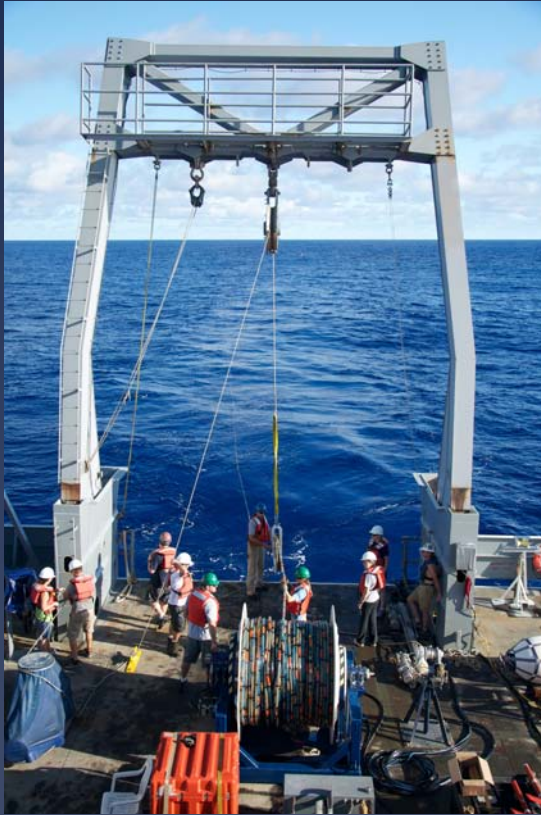
Co-PIs Masako Tominaga, Maurice Tivey, Dan Lizarralde, Will Sager, Adrienne Oakley



Hawaiian Jurassic Seafloor Magnetic and Seismic Survey



Seismics



Magnetics

