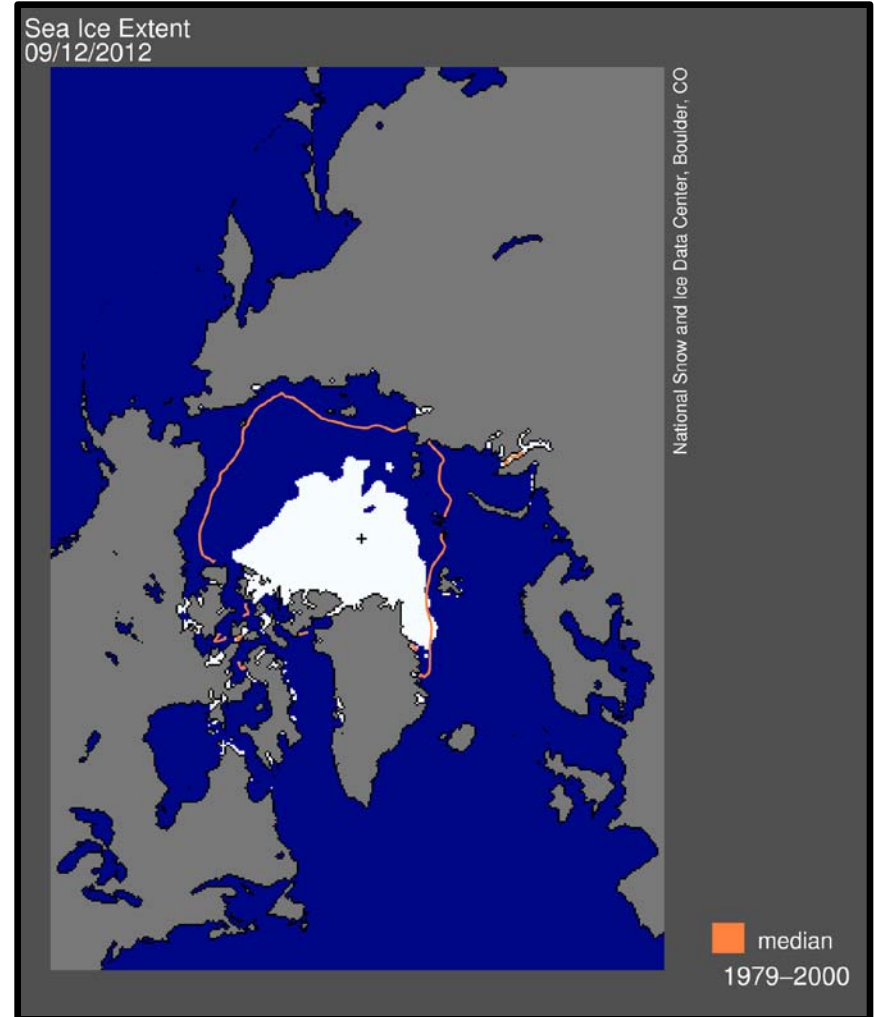


ARCTIC ICEBREAKER COORDINATING COMMITTEE (AICC)

Report to UNOLS: 23-
24 October 2012



[NSIDC website, 12 September 2012]

Arctic Icebreaker Coordinating Committee (AICC): Current Membership*

Committee Member	Contact Information	Term Dates
Robin Muench, ESR (Chair)	rmuench@esr.org	01/2007 to 1/2013
Lee Cooper, UMCES	cooper@cbl.umces.edu	09/2008 to 09/2014
Don Perovich, CRREL	donald.k.perovich@usace.army.mil	05/2008 to 05/2014
Karen Frey, Clark U.	kfrey@clarku.edu	10/2009 to 10/2015
Jeremy Mathis, UAF	jmathis@sfos.uaf.edu	10/2009 to 10/2015
Luc Rainville, UW/APL	rainville@apl.washington.edu	11/2009 to 11/2015
Larry Mayer, UNH	larry@ccom.unh.edu	11/2009 to 11/2015
Robert Campbell, URI	rcampbell@gso.uri.edu	01/2010 to 01/2016
Doug Russell, UW (RVOC Rep.)	dgruss@u.washington.edu	07/2010 to ----
Steve Hartz, UAF (RVTEC Rep.)	sjhartz@alaska.edu	05/2007 to ----

*October 2012

Some 2012 Accomplishments

Completed three scientific operations, two being continuations of ongoing programs.

Continued, as implementation of the current 3-year SIO/OSU *Healy* tech support program, critical science upgrades to *Healy*

Continued tech training, pursuant to an MOA allowing for training aboard UNOLS vessels, on an opportunistic basis, of USCG personnel.

Continued to investigate sources and methods for acquisition of real time ice cover data necessary for scientific operations.

Continued to monitor progress of *Sikuliaq* construction and to aid in publicizing this soon-to-be-operational new research facility to the oceanographic community.

Continued efforts to improve coordination among research and Alaska Native activities.

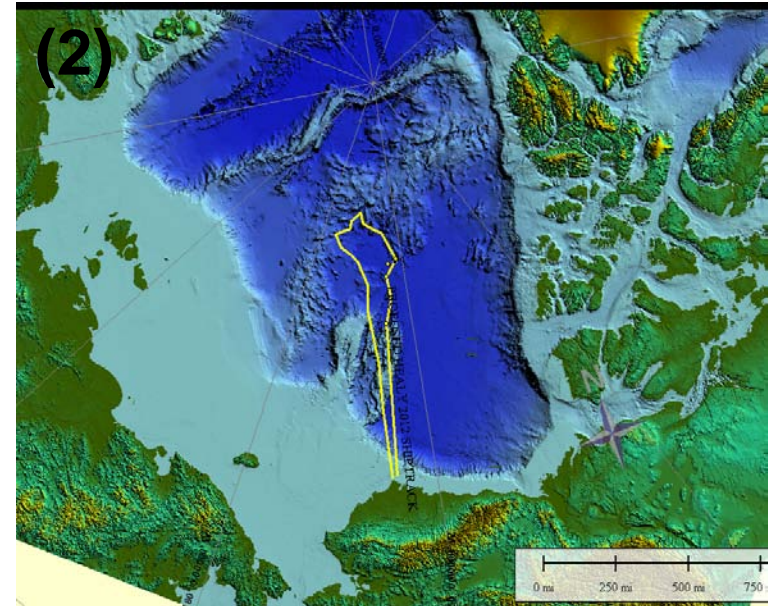
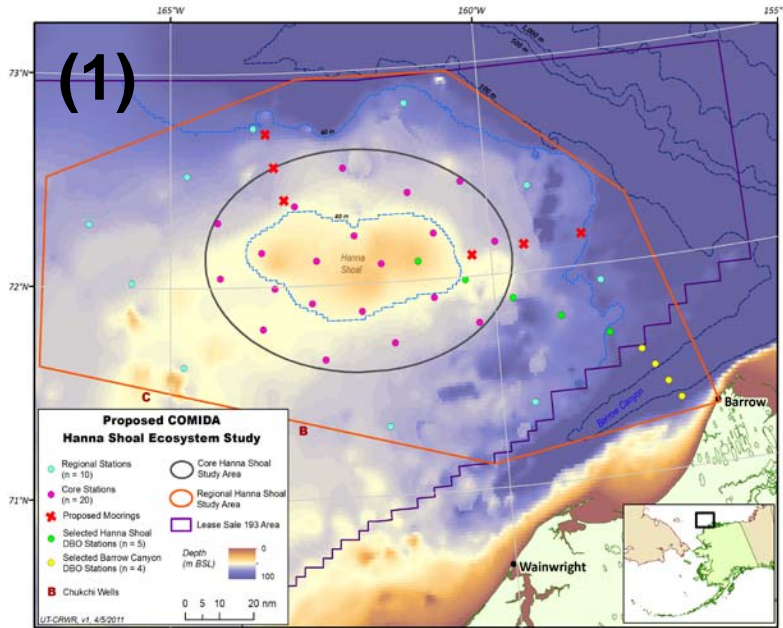
2012 Field Activities in The Arctic USCGC *Healy*

- (1) **August 6 – 26***, Dutch Harbor – Barrow: Chukchi Sea Offshore Monitoring in Drilling Area (COMIDA) - Hanna Shoal Ecosystem Study. Chief Scientist Jackie Grebmaier
- (2) **August 26* – September 28, Barrow – Dutch Harbor:** Multibeam echosounder mapping in Nautilus Basin in support of delimiting an Extended Continental Shelf. Chief Scientists Larry Mayer and Andy Armstrong
- (3) **October 5 – 25, Dutch Harbor – Dutch Harbor:** Assessing the Western Arctic Boundary Current and its role in the Arctic ecosystem and climate change. Chief Scientist Bob Pickart

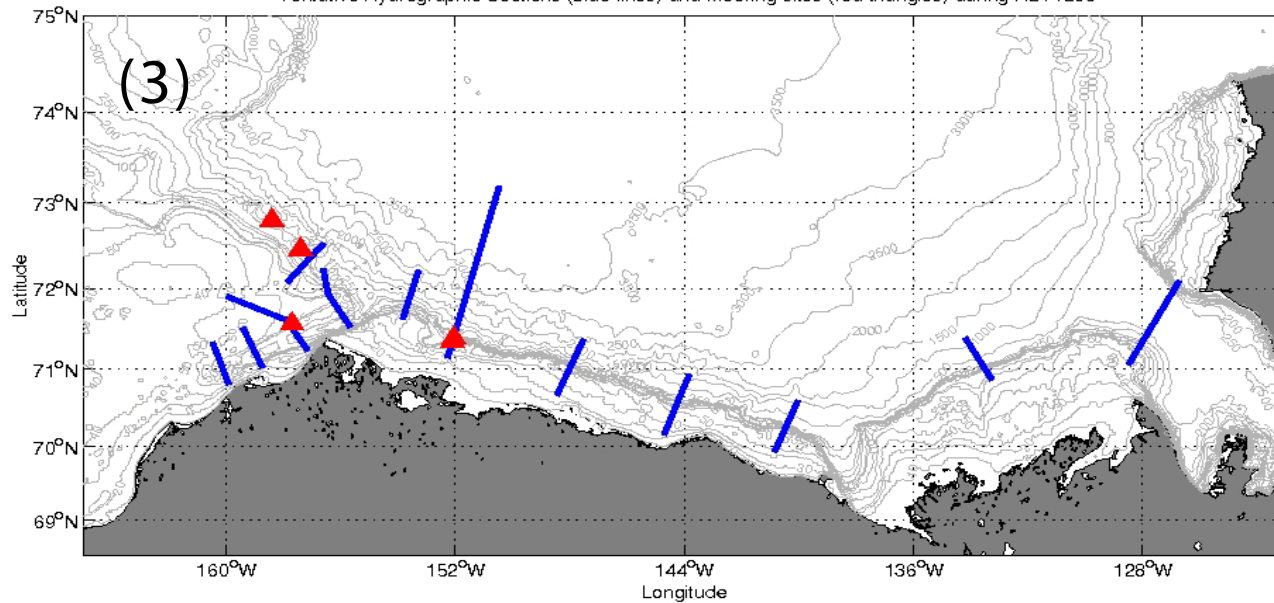
(*Yes this was a tight connection, and there were consequent issues ...)

More details are available on IceFloe (<http://www.icefloe.net>)

USCGC *Healy* 2012 Field Season

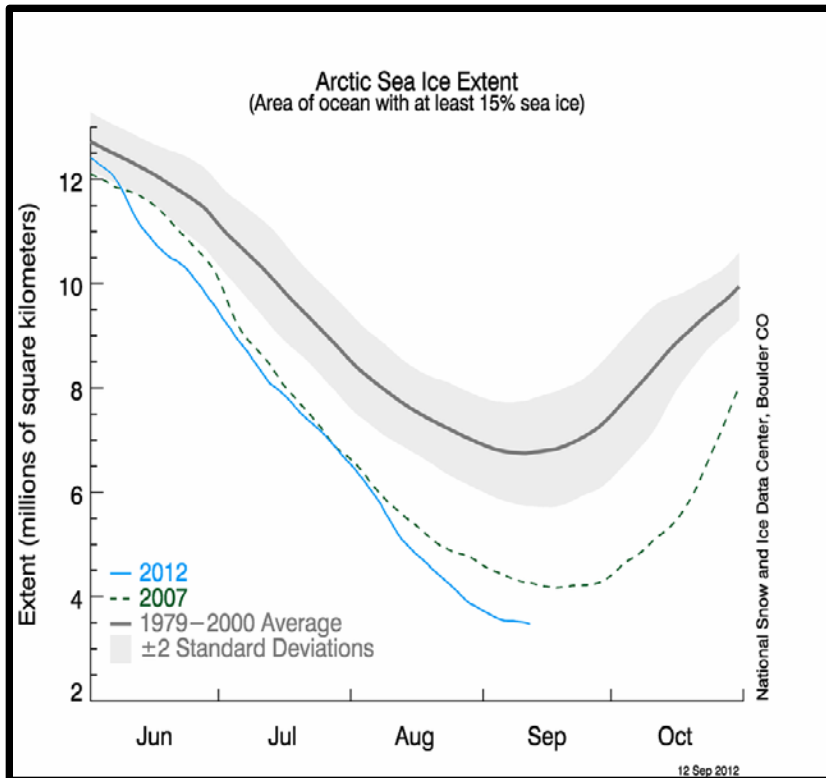


Tentative Hydrographic Sections (blue lines) and Mooring sites (red triangles) during HLY1203



An ice-free summer Arctic Ocean in 4 years?

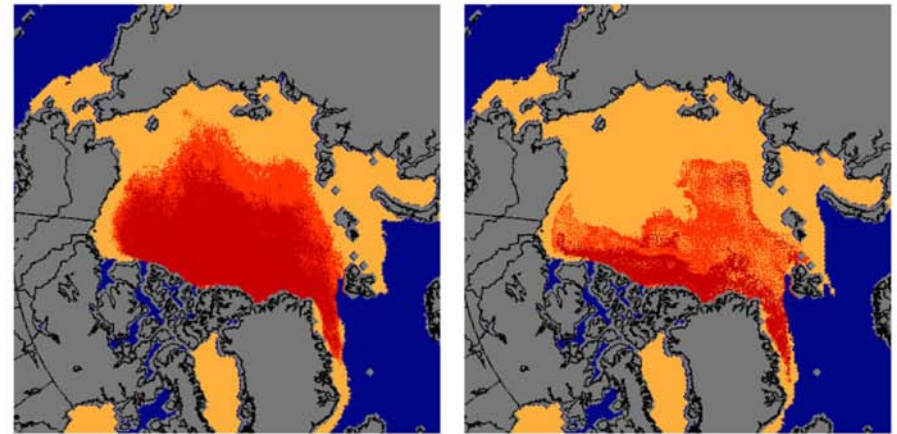
[Peter Wadhams in the *UK Guardian*, 9/17/12]



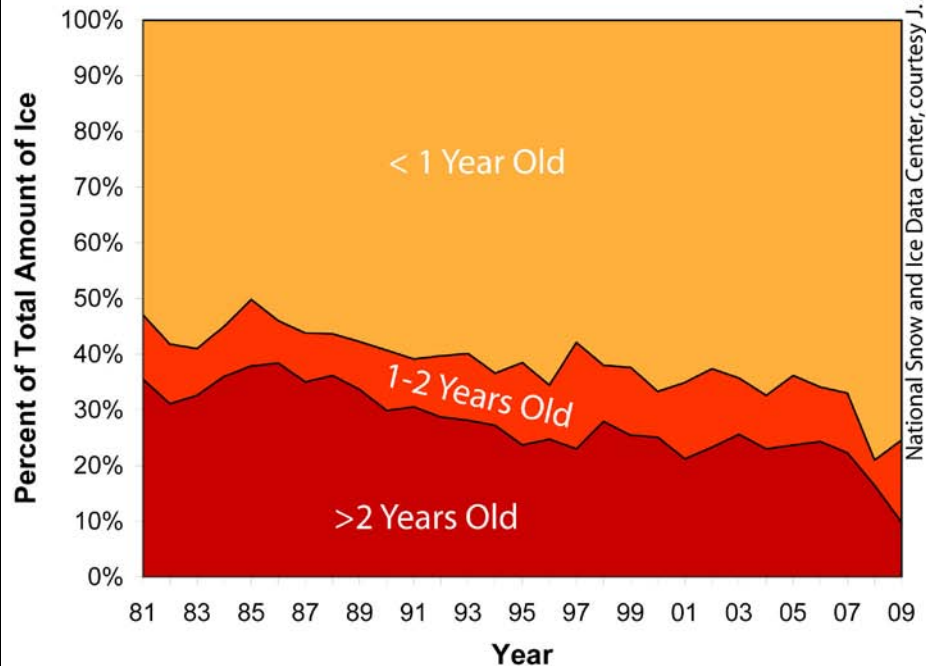
[NSIDC website, 12 September 2012]

End of February Arctic Sea Ice Age

1981-2000 Median 2009



First year ice (< 1 Year Old)
 Second year ice (1-2 Years Old)
 Older ice (>2 Years Old)



National Snow and Ice Data Center, courtesy J. Maslanik and C. Fowler, Univ. Colorado

Online Information Sources for the AICC

The **UNOLS** Website:

<http://www.unols.org/committees/aicc/>

The **IceFloe** Website
(maintained by the US
CG)

<http://www.icefloe.net>

