



# Summary of 2012 operations and the 2013 scheduling process



# UNOLS Ship Scheduling Committee Report

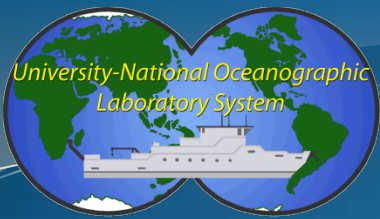
Committee Chair – Stewart Lamerdin/MLML

Committee Vice Chair- Liz Brenner/SIO

## Fleet Operations for 2012 & Outlook for 2013

Chairman's Report of Committee Activities

Executive Secretary's Utilization Charts



# 2012 Process

February 9 & 10, 2012

- Global Ship Schedulers met with NSF, ONR,NOAA reps at SIO
- Initial Review of 2012 work
- Global Ship Locations at end of 2012
- First Cut at 2013 schedule options with Agency input on priorities.

February- May

- Schedulers worked letters of intent, awaiting more STR's.

June-September

- SSC & UNOLS facilitates Ship Scheduler's Conference Calls with assistance of federal agency reps. Funding information updated as available.
- Agency recommended putting best schedules you can at this time.



## 2012 Process – Continued

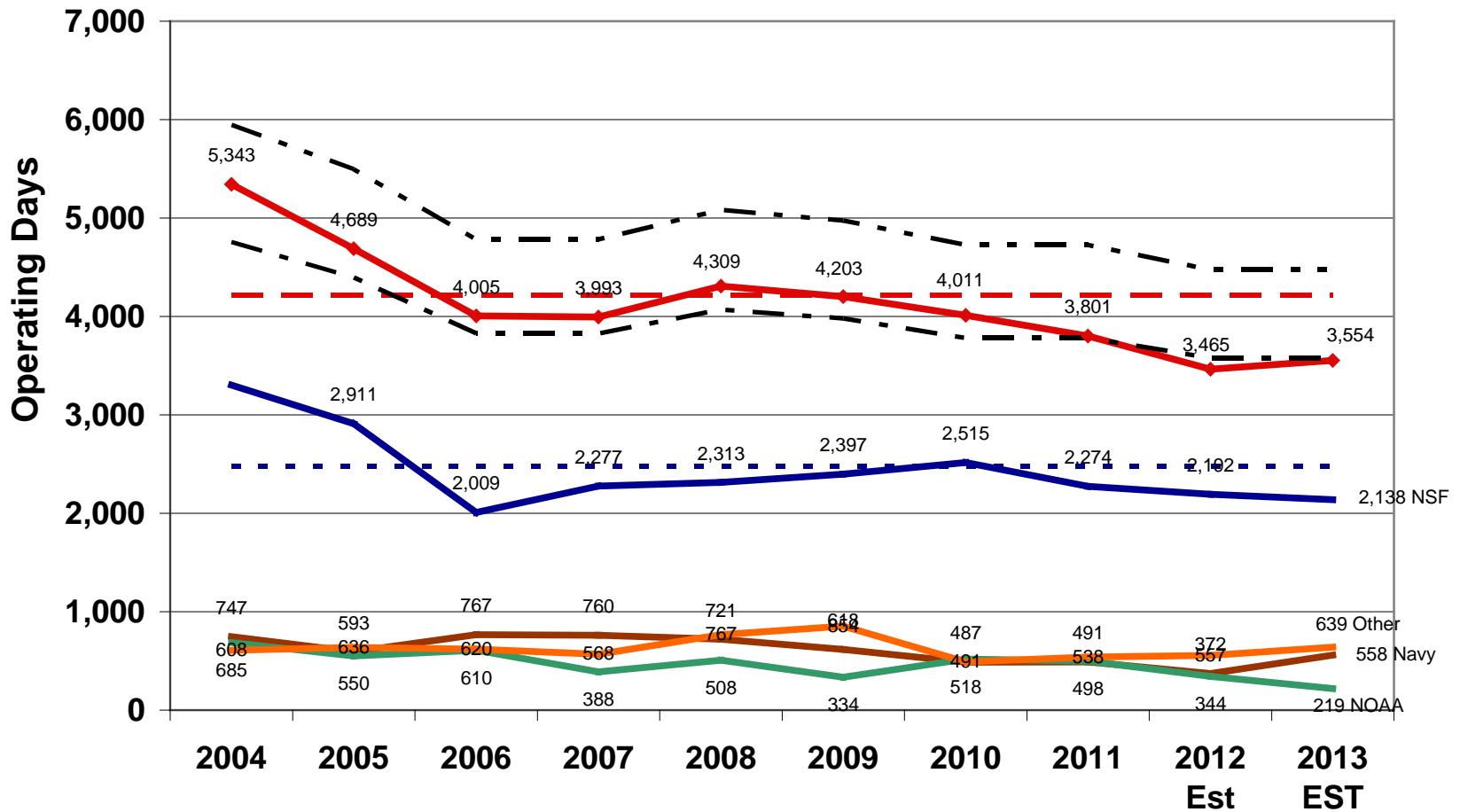
Agency Letter of Recommendation submitted to Council Chair on June 1, 2012

Early October - Schedulers begin posting 2013 schedules

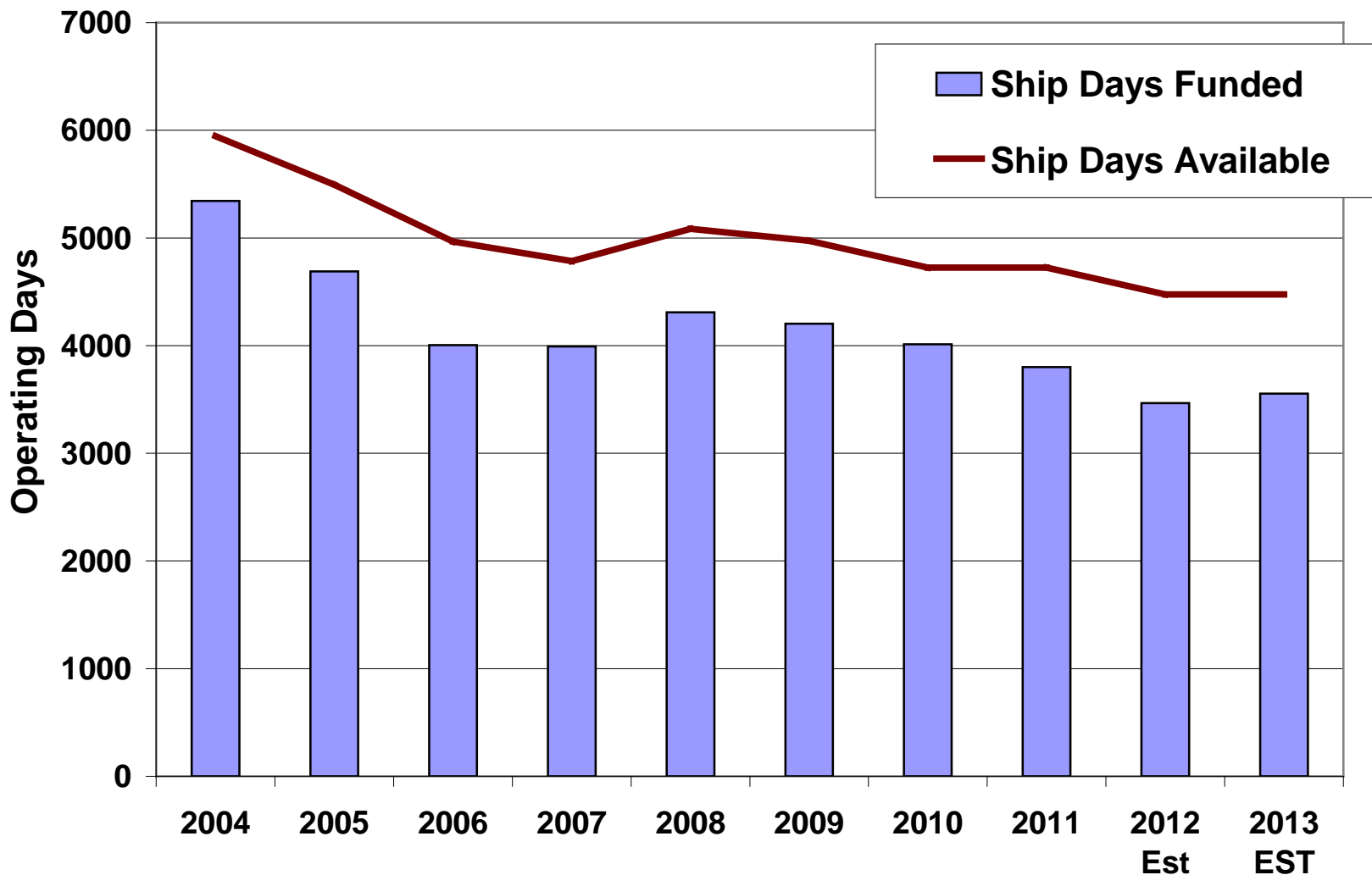
### Conclusions-

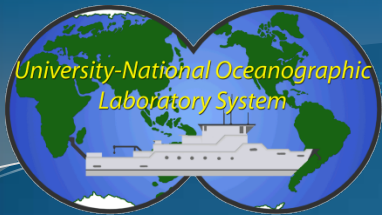
- We continue to “work” scheduling issues.
- Concern over rising day rates, flat budgets

## UNOLS Fleet Utilization (2004 - 2013)



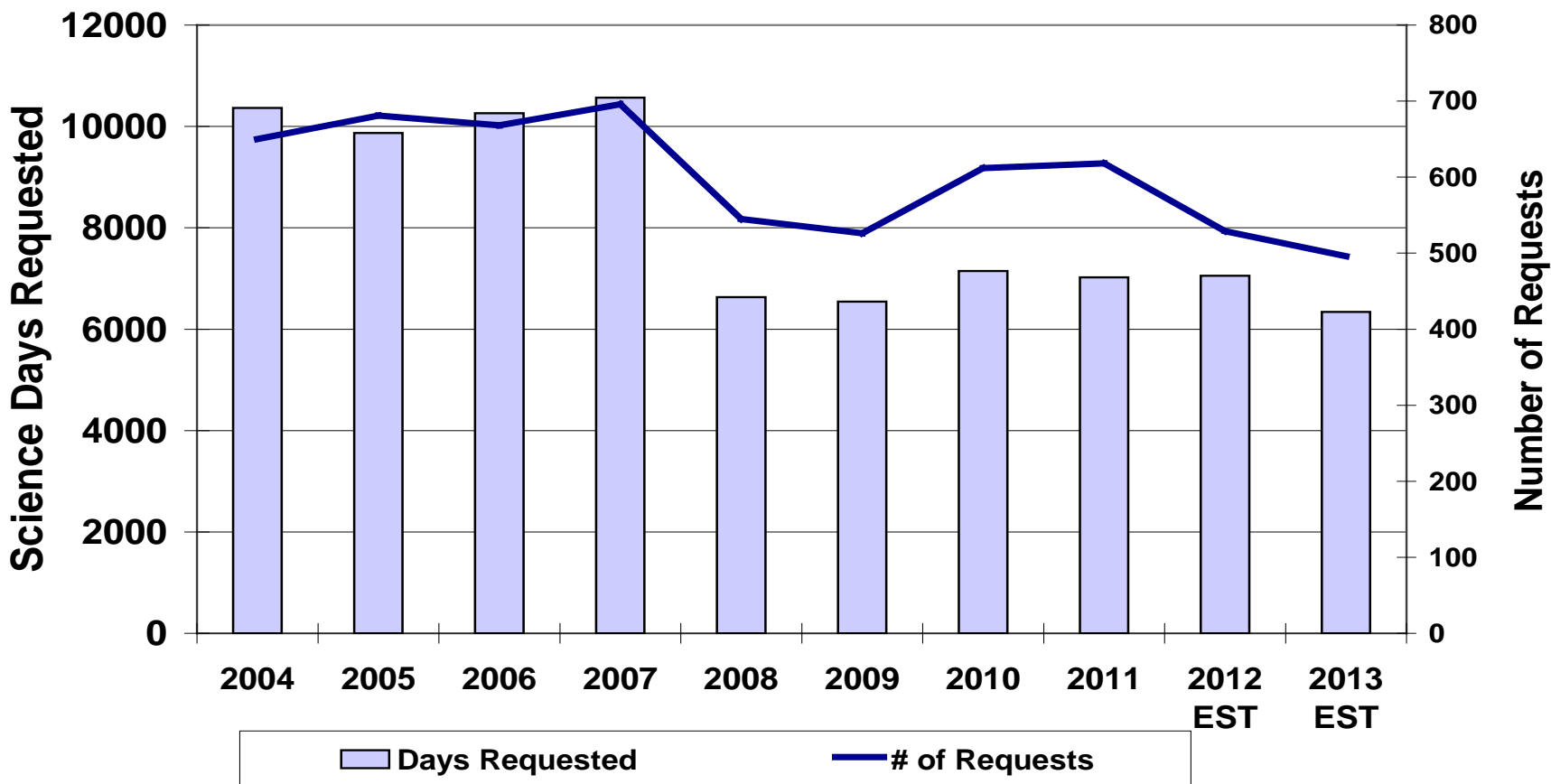
## Ship Days Funded/Pending and Days Available

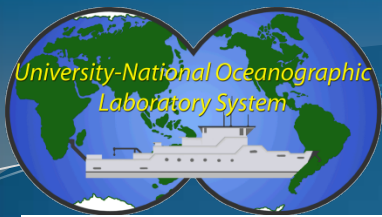




# SSC

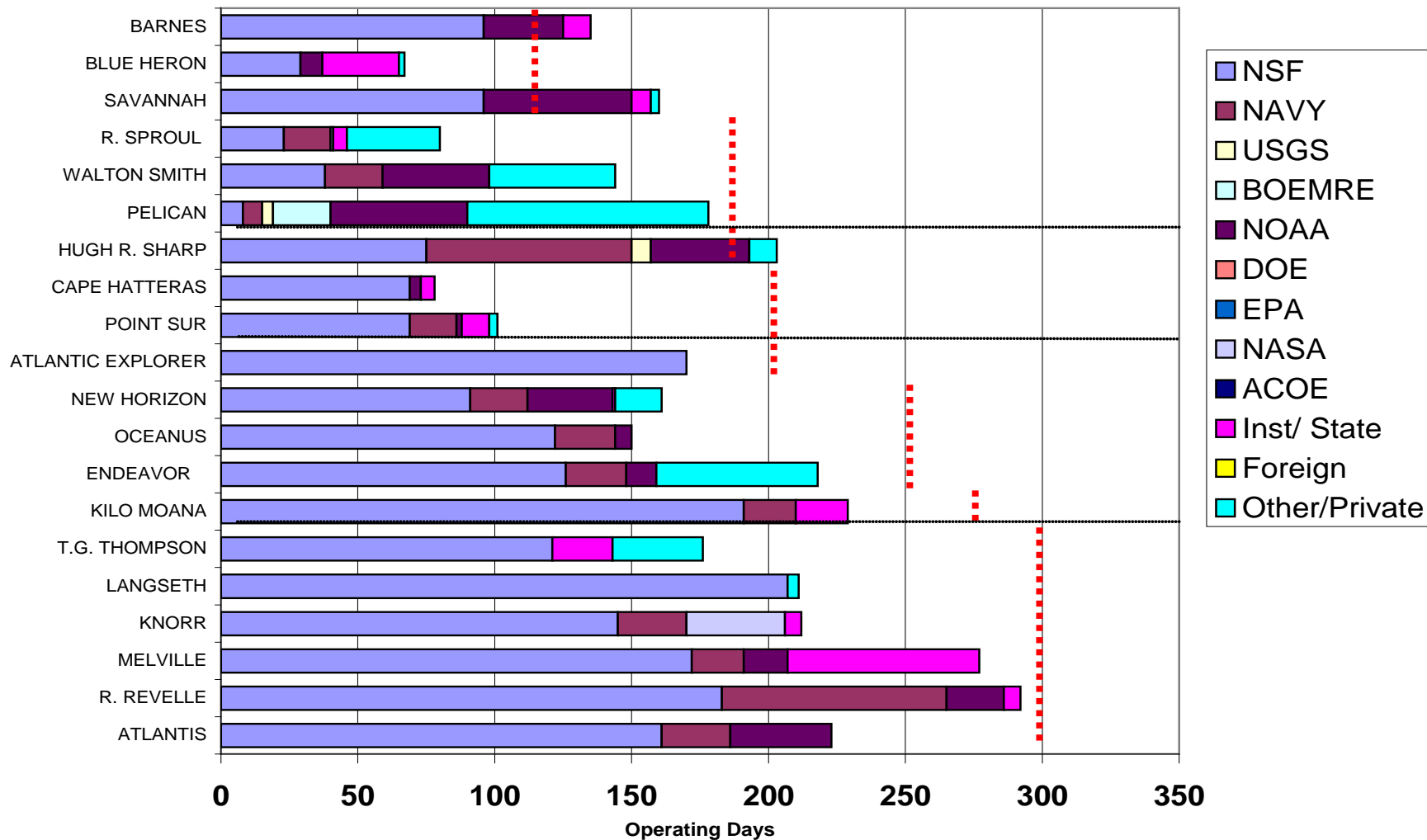
## Ship Time Request Demand



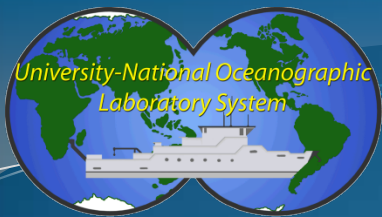


# SSC

## 2012 Ship Schedules







# SSC

## 2013 Ship Schedules

