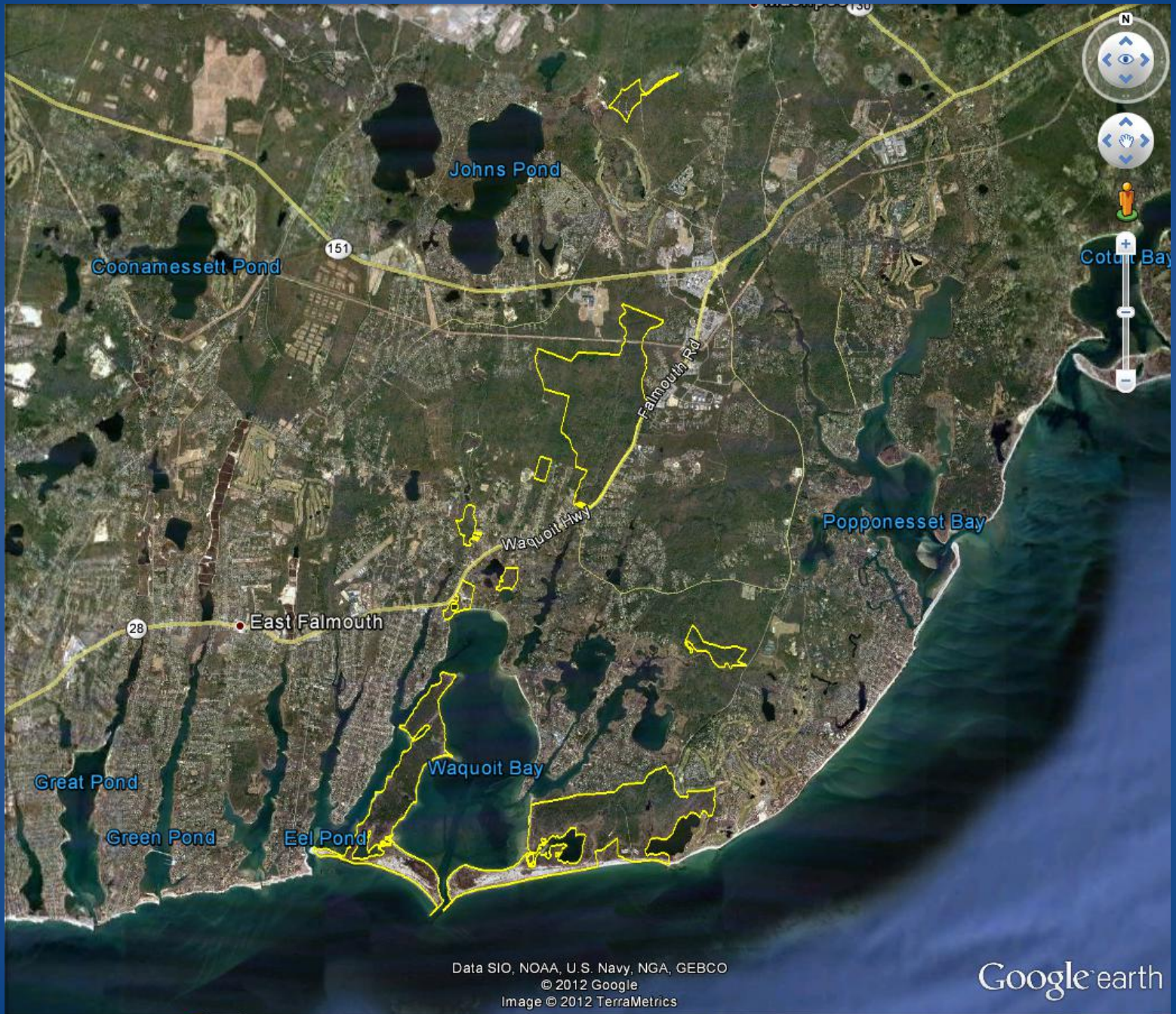


UAS Operation  
at  
Woods Hole Oceanographic  
Institution

David Fisichella  
August 2012

- History
- Funding
- Projects and Interest
  - Princeton Low Alt. Gas Analysis
  - Penguin Studies
  - Greenland Ice Sheet
  - Puerto Rico Reef Study
  - Martha's Vineyard Coastal Zone
  - Waquoit Bay National Estuarine Research Reserve  
Habitat/Vegetation Census





Data SIO, NOAA, U.S. Navy, NGA, GEBCO  
© 2012 Google  
Image © 2012 TerraMetrics

Imagery Date: 3/11/2012 1991

41°35'23.76" N 70°30'23.26" W elev 35 ft

Google earth

Eye alt 41304 ft



# WHOI UAS Platforms

- Fixed wing



# WHOI UAS Platforms

- Multi Rotor



# ADM2 Autopilot & IMU





# What's Next?

- Launch/Recovery From Ships
- WHOI Center for Marine Robotics
- Create Self-Sustaining Group
- Develop Operator Model – Shared-Use Pool
- Advanced Sustained Flight Experiments