

University of Alaska Fairbanks

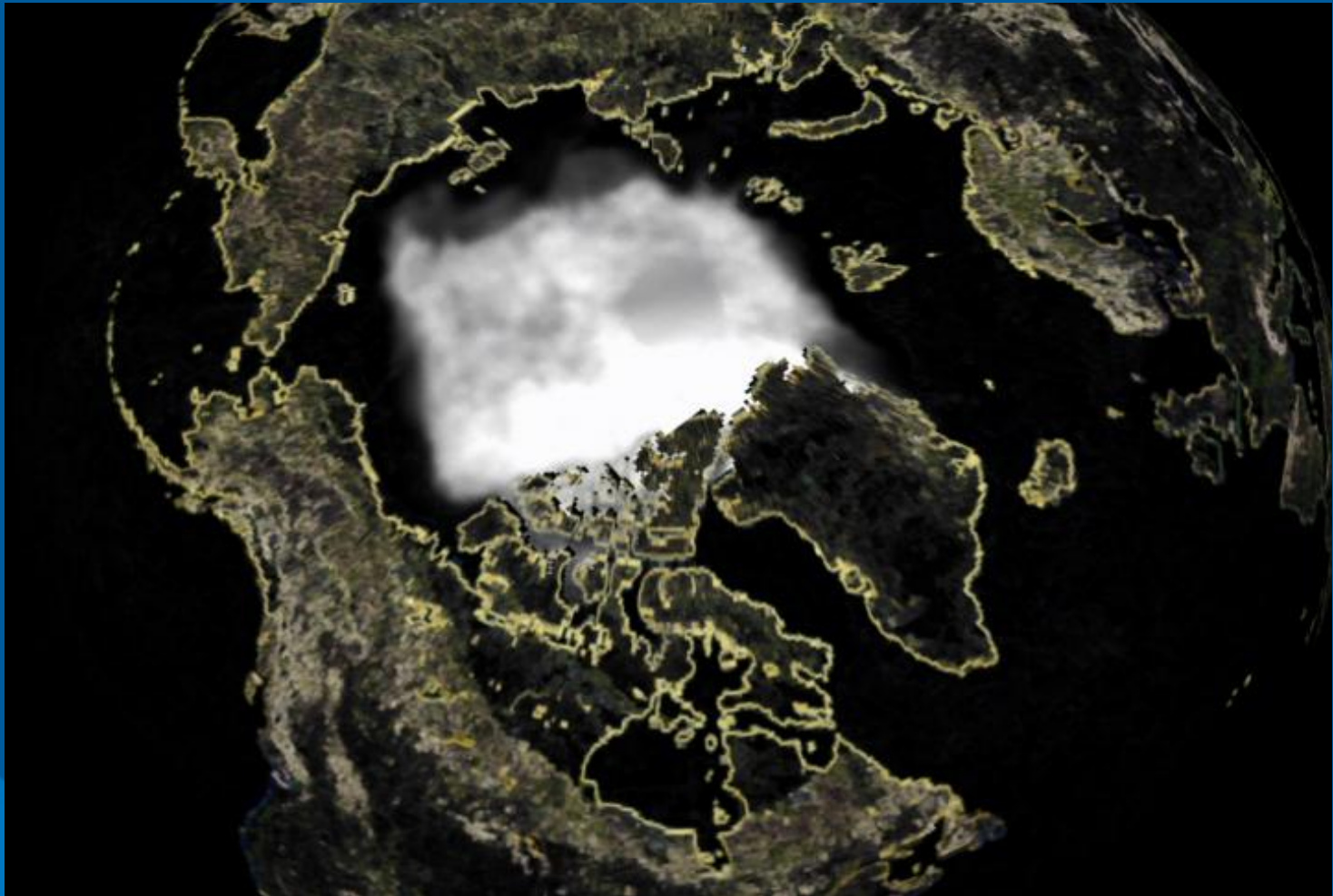
The next 10 years

**Scientific Committee for
Oceanographic Aircraft Research
Fairbanks, Aug14-15, 2012**

**Michael Castellini
School of Fisheries and
Ocean Sciences
Dean**



www.sfos.uaf.edu





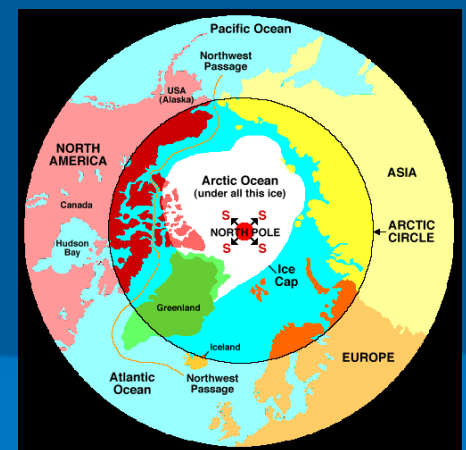


Marine Focus for the North

The known issues:

- Changes in Arctic sea ice
- Increased economic drivers / resources
- Changes in fisheries
- Increased human marine impact / traffic
- Ocean acidification
- Social impacts on Arctic populations
- Permafrost / ocean interactions
- Public information / perception

What are the opportunities and what are the risks?



Challenge:

How cover this vast area?

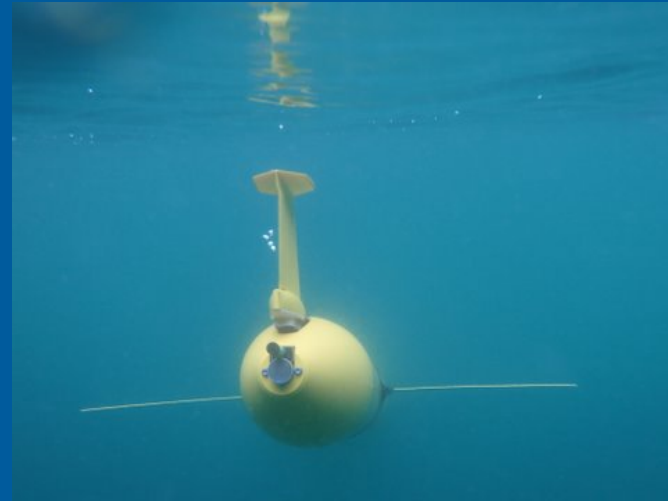
Ocean observing systems

Remote monitoring

Satellite and aerial technology

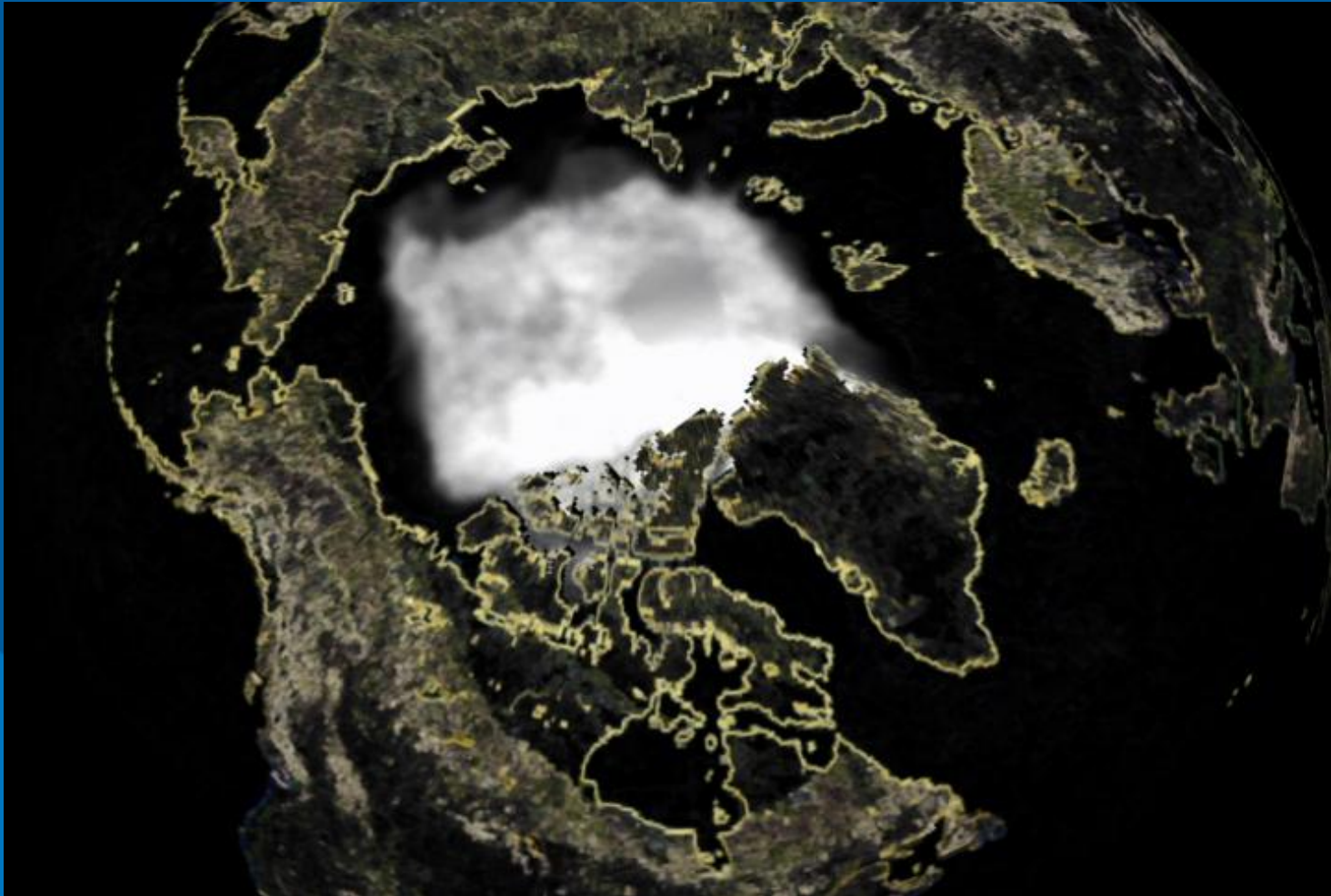


Autonomous Underwater Vehicles (AUV) or gliders



**Zig-zag through water column
making measurements.
Transmits data every 6-hours via
Iridium.**

Challenge #2: **How put scientists and students into the Arctic ?**



RV Sikuliaq



First ice-strengthened research vessel in the UNOLS fleet. Global class.

Long-standing replacement for the Alpha Helix



Alpha Helix



Transferred from
Scripps in 1980



R/V Sikuliaq



- Length: 260+
 - Beam: 52 feet
 - Endurance: 45 days
 - Icebreaking capability: 2.5 ft at 2 knots
 - Scientists: 26
 - Ability to transmit data real-time to classrooms, the public
-
- Currently being constructed at Marinette Marine Corporation in Wisconsin
 - Launch date: Oct 13, 2012





Sikuliaq keel-laying ceremony April 2011



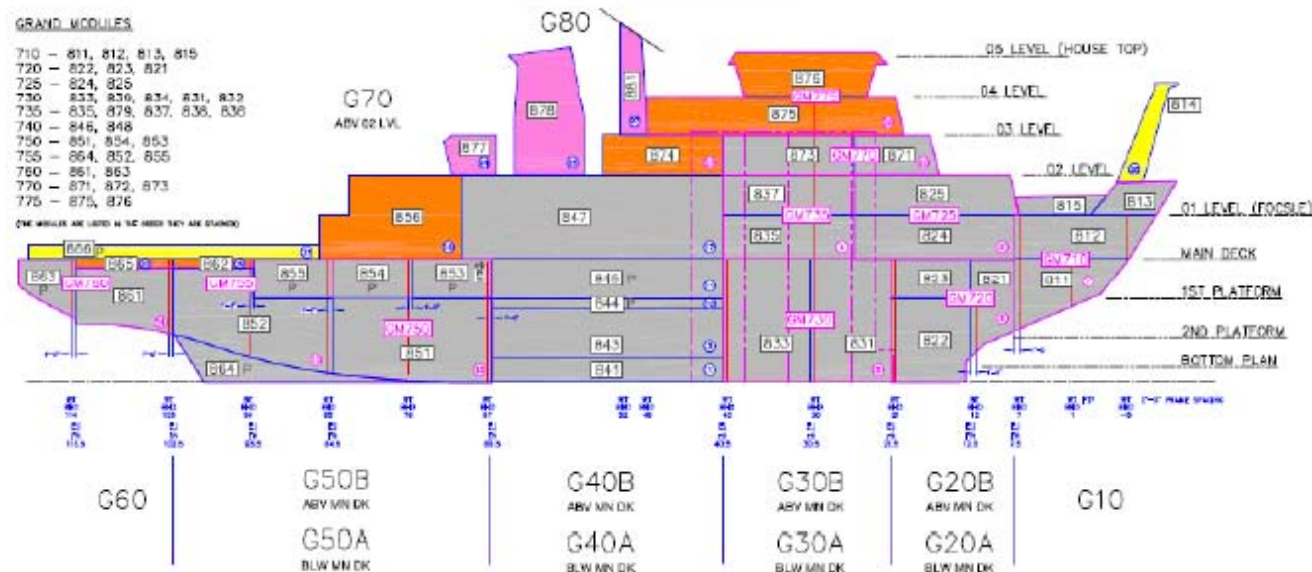
GROUP DEFINITIONS

G80 - 881 (MAST)
G70 - 871 THRU 879 (ALL MODS ABV 02 LVL EXCEPT 881)
G50 - 881, 882, 883, & 884
G50 - 881, 882, 883, 884, 885, & 886
G40B - 841, 842, 843, 844, & 845
G40A - 846, 847, 848
G30A - 831, 832, 833, 834, & 835
G30B - 836, 837, 838
G20A - 821, 822, & 823
G20B - 824 & 825
G10 - 811 & 812

GRAND MODULES

710 - 811, 812, 813, 815
720 - 822, 823, 821
730 - 824, 825
730 - 833, 836, 834, 831, 832
735 - 835, 839, 837, 836, 838
740 - 846, 848
750 - 851, 854, 853
755 - 864, 852, 855
760 - 861, 863
770 - 871, 872, 873
775 - 875, 876

(THE MODULES ARE LISTED IN THE ORDER THEY ARE STAGED)



XXX - MODULE/GRAND MODULE
(X) - ERECT SEQUENCE
P = FABRICATION BY PLUTCHAK

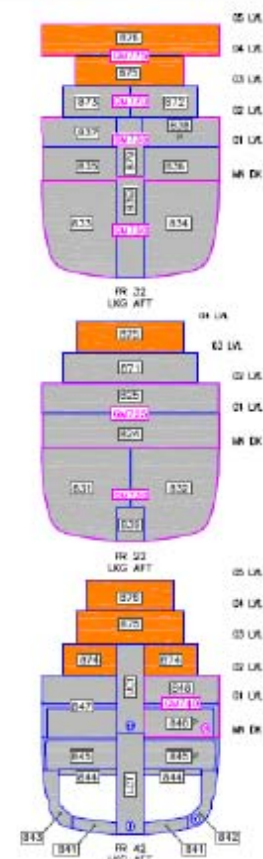
FAB PANEL CSTR PAINT PREOUTFIT ERECT

FOR REFERENCE ONLY

ARRV Module Status as of 07/27/12

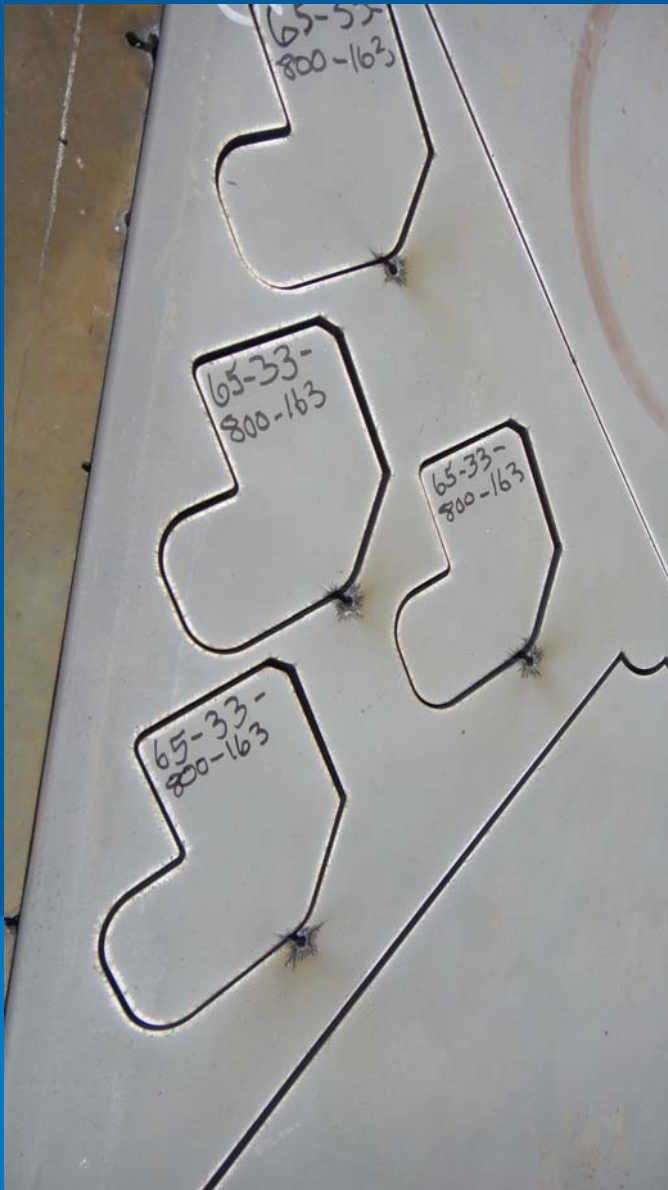
THIS DRAWING IS A PRODUCTION CONTROL DEPARTMENT STATUSING TOOL
IT IS FOR REFERENCE ONLY

Production Completion Progress;
Approximately 81.5%



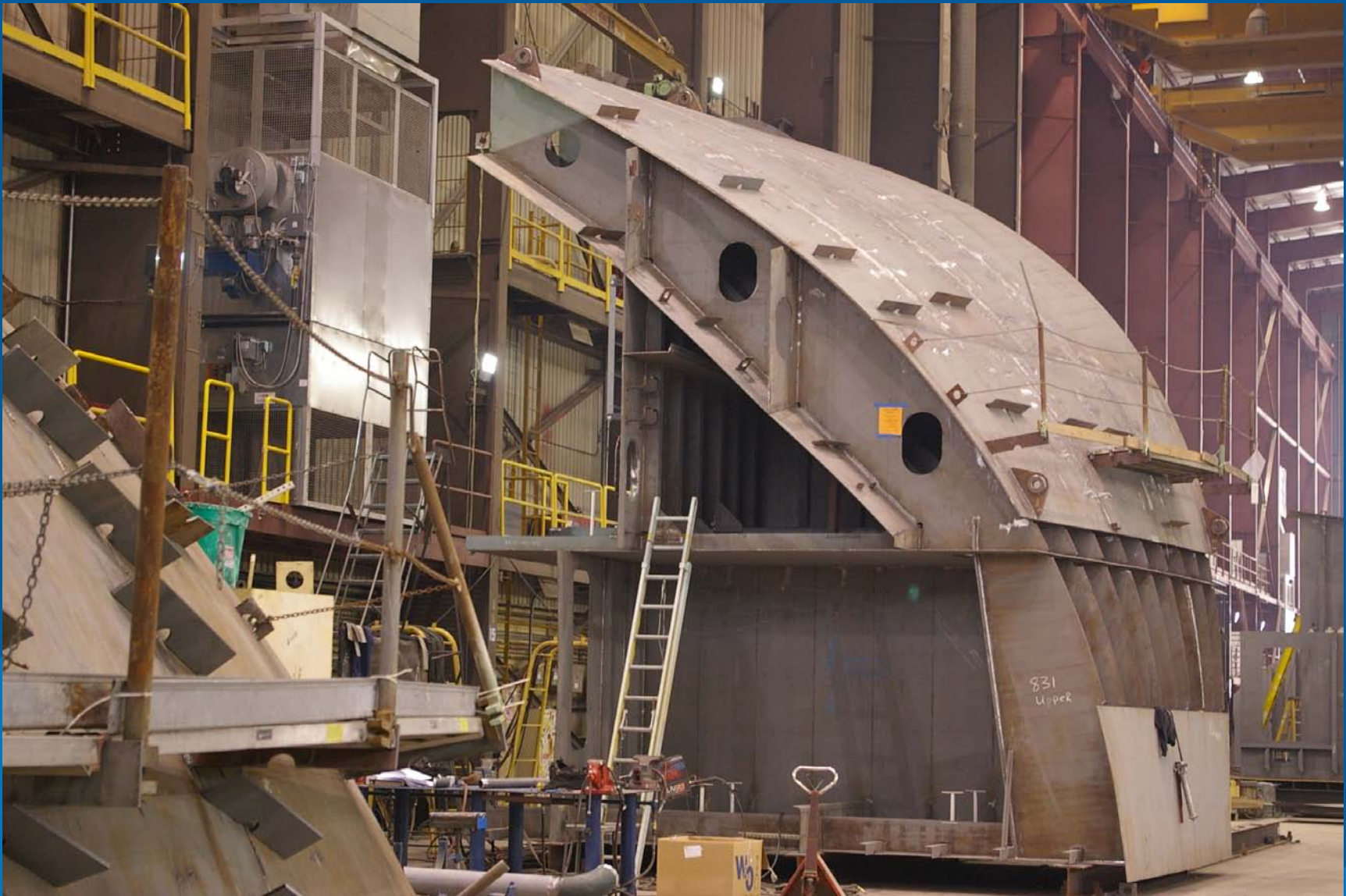
MARINETTE MARINE CORPORATION A HANSON COMPANY			
ALASKA REGION RESEARCH VESSEL MODULE STATUS			
DATE	BY	DATE	BY
DATE	BY	DATE	BY
DATE	BY	DATE	BY

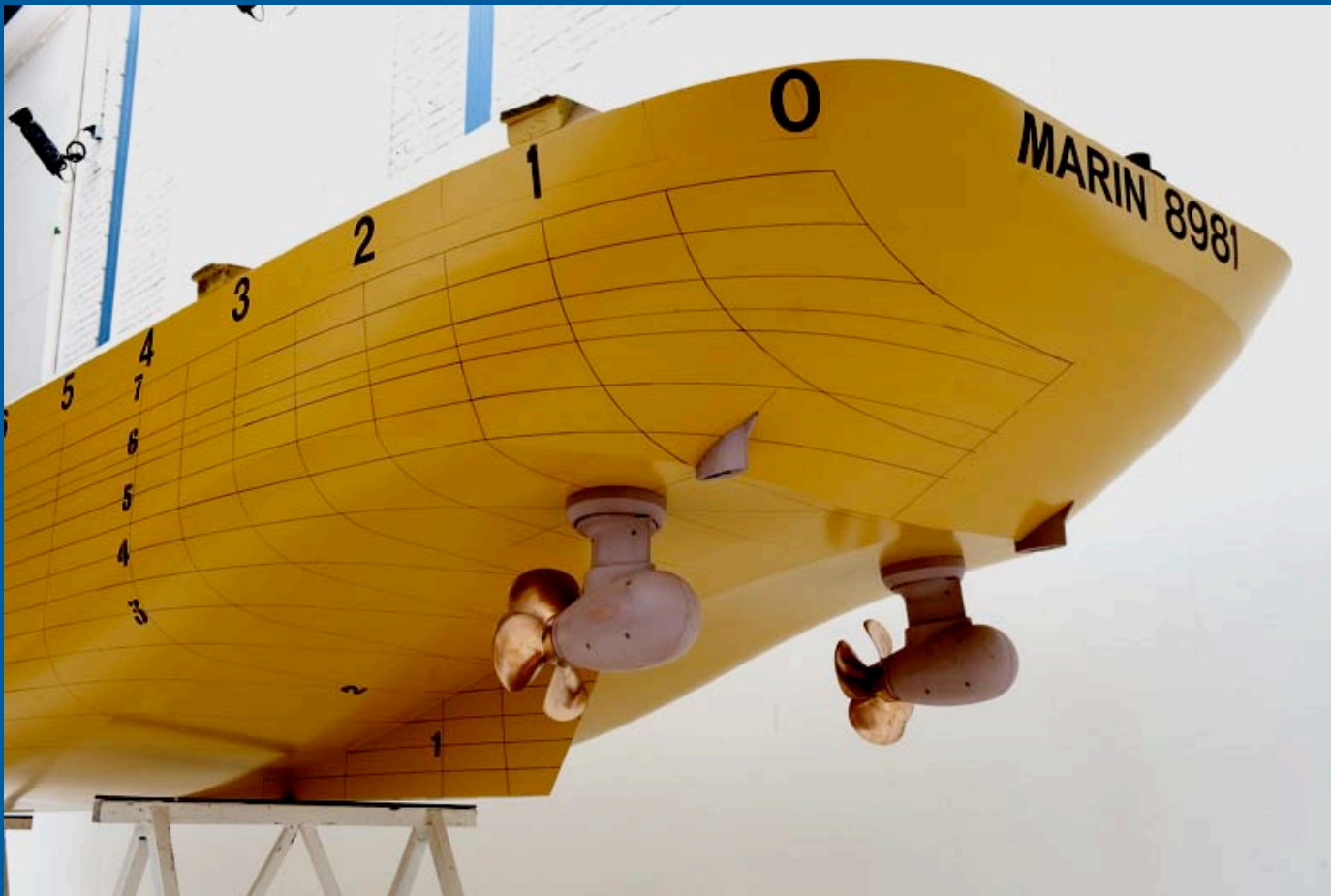
Latest Construction Status



Computer control of plasma cutters
1/8" accuracy in total module







Stern view with tractor Z-drive units





Detail of the ice reamer



