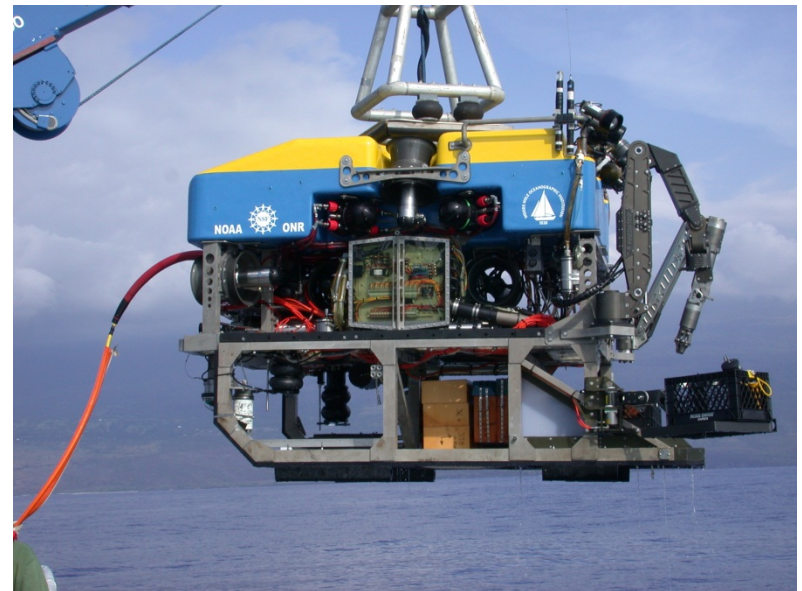




National Facility Operator's Report 2012 Jason Operations



- **3 cruises completed**
*Eastern Mediterranean, Cayman Trough,
North Pond/Mid-Atlantic Ridge*
- **25 lowerings**
- **Longest: 37 hrs**
- **Average: 17 hrs**
- **314 hours of data**
- **78 nautical miles covered**
- **Vessels used:** *Atlantis, Merian*





National Facility Operator's Report **2012 Jason Highlights**



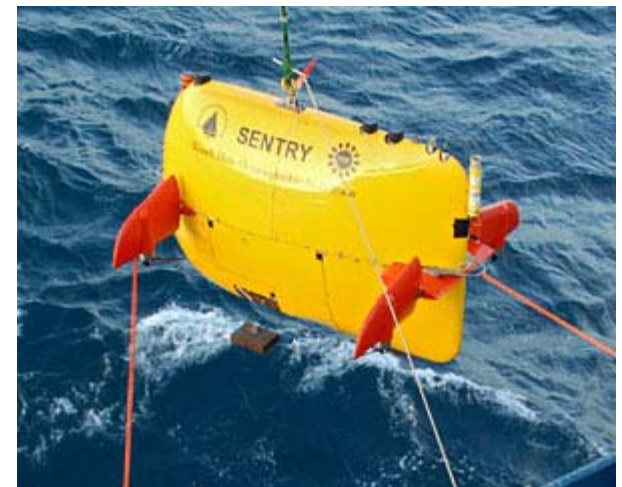
- **Petroleum 'seeps', concurrent *Sentry* ops, shallow dives to 40m**
- **Sediment and brine pools in the Med**
- **First sampling of the world's deepest hydrothermal vents, at 5,000m on the Mid-Cayman Rise**
- **Side by side USBL - LBL comparison at numerous depths**
- **IODP bore hole deployments and CORK servicing, Mid Atlantic Ridge 'North Pond'**



National Facility Operator's Report 2012 Sentry Operations



- **2 cruises completed (plus major upgrade)**
Central Western Pacific, Chile Triple Junction
- **12 dives**
- **Longest: 34 hrs Average: 16 hrs**
- **154 hrs / 343 km of survey**
- **Vessels used:** *Thompson, Melville*

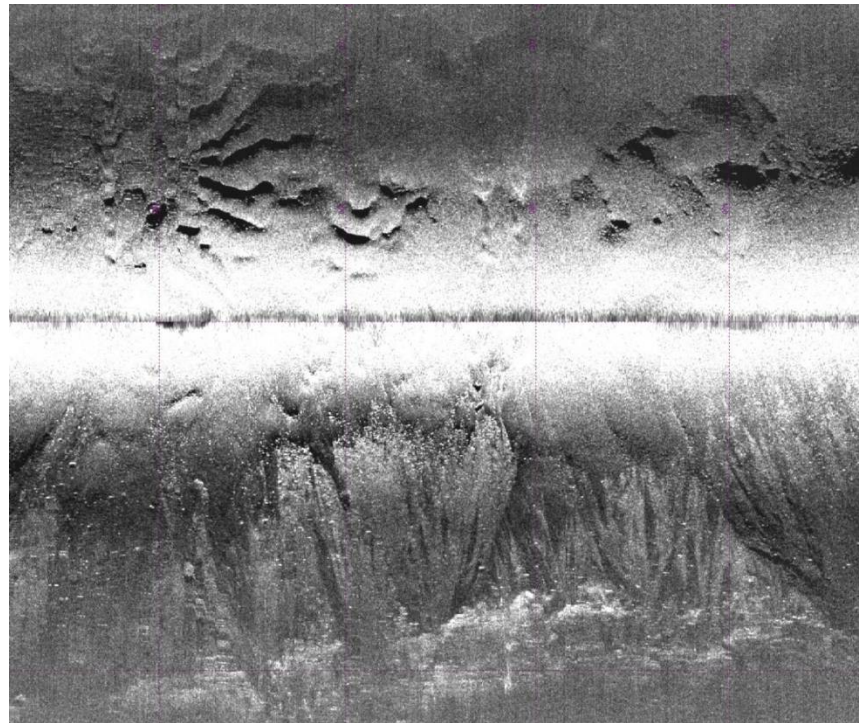




National Facility Operator's Report 2012 Sentry Highlights



- Sidescan pipeline fully up and running both frequencies
- Staffing situation improving – see Upgrades section
- High quality photos on a 200m vertical scarp





National Facility Operator's Report 2012 NDSF Support Ships



R/V Thompson

- Communication challenges with the UW port office made effective planning of the mobilization difficult
- Crane supplied for mobilization was not capable of lifting the *Sentry* components despite all requirements having been supplied to UW well in advance

R/V Melville

- All good

R/V Merian

- Successful ops, excellent *Jason* platform, cranes, deck space, station keeping