

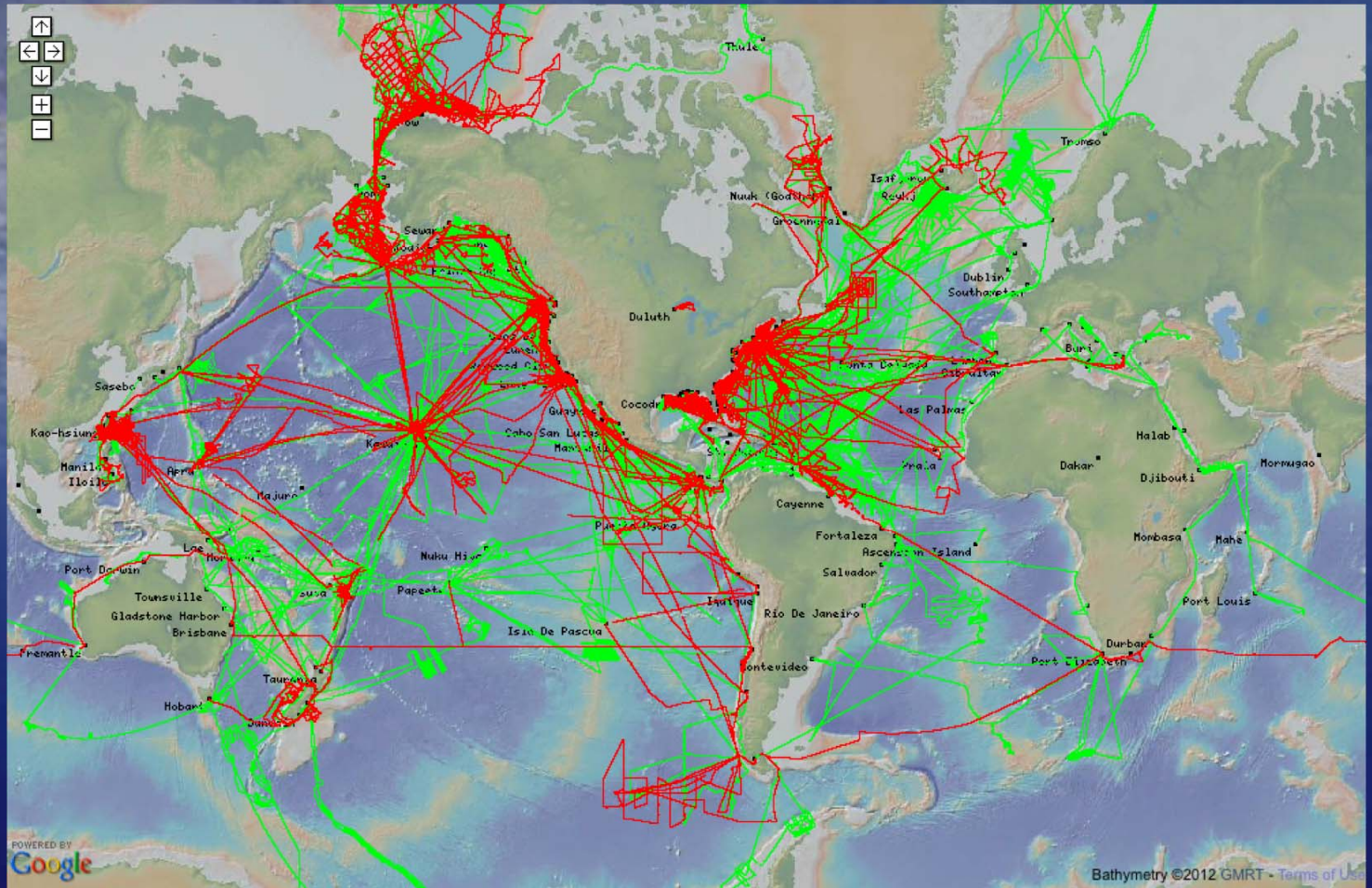


Rolling Deck to Repository (R2R) Program

Report to UNOLS Council June 2012



Global Coverage



R2R Catalog as of May 2012:
2,429 cruises
10M+ files (data/documents)

- 1,003 Cruises since Jan. 2009 (R2R Pilot)
- 1,426 Additional/older cruises submitted by operators or crosschecked from other databases (LDEO, SIO, WHOI)
- Total

Data Policy

Division of Ocean Sciences Sample and Data Policy



National Science Foundation

May 2011

III. OCE General Data Policy

- C. All standard underway data collected at sea aboard NSF-supported oceanographic research vessels will be submitted to the appropriate long-term archive through the R2R (Rolling Deck to Repository) program. For these data sets, this relieves the PI and the ship operator of post-cruise data management responsibility for the underway datasets (See Section VI-B for more specific information). For other at-sea, special ops or research-specific datasets collected on a cruise (such as water samples, ROV sampling, dredge hauls, etc.) the PI is responsible for collecting and making public the metadata associated with sample collection and the data or results from the research.

IV. OCE Proposal Requirements

- B. Effective with the release of this policy, the underway data from NSF-funded cruises will be placed in the public domain for unrestricted open access after 60 days of the cruise end date, unless a request for restricted access is submitted through R2R. If such a request is submitted, a proprietary hold period of **up to two (2) years** will be maintained by R2R with approval of the cognizant NSF Program Officer. Requests for a longer proprietary period will be maintained by R2R only with the approval of the cognizant NSF Program Officer. Data will be transmitted to the appropriate National Data Center for dissemination only after the conclusion of the stated proprietary hold.

- R2R standard procedure is to seek prop. hold release immediately after every cruise
- 95%+ of PI's have responded "release everything"



Archiving/Products



- 538 data sets (1 per cruise+sensor) released and submitted to NOAA archives – available for download
- Clean/final navigation published for 332 cruises
- Quality assessment completed for ~1,000 data sets:
 - 332 GNSS (source data for navigation tracks)
 - 254 multibeam
 - 28 gravimeter
 - 352 MET/TSG (real-time via SAMOS system)
- Event Logger successfully deployed on 29 cruises to date



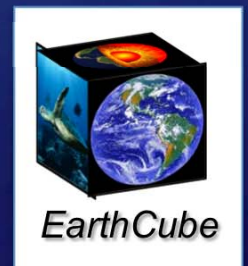
Sensor Catalog

- 400+ instruments (including CTD/MET subcomponents) documented fleetwide as of May 2012
- Catalog expanded to include operational history eg. Gravity Ties
- Working to align controlled vocabularies with UNOLS Shared-Use Equipment Inventory
 - next step is alignment with SeaDataNet international vocabularies
- Presentation to OOI Team (May 2012)



Community

- Work with NOAA Data Centers on long-term archiving and data quality standards
 - annual joint NOAA/R2R meeting, Boulder (May 2012)
- Work with U. Hawaii Currents Group on ADCP data quality assessment tools
 - presented results at OS12 Meeting (Feb. 2012)
- Work with partner data systems (NSF EAGER award) on integrated Web services
 - initial results to be presented at EarthCube Meeting (June 2012)



Advisory Panel *(forming)*

- Goals – assess R2R results to date, guide future priorities, entrain wider community
- Membership (target 10-12) drawn from science users, vessel technicians, data managers

R2R requests advice from Council on Panel membership – suggest 5-6 members?

- In-person meeting (target 1 ½ days, early Nov. 2012) at LDEO – travel covered by R2R
- Summary report with findings/recommendations to be posted online



info@rvdata.us