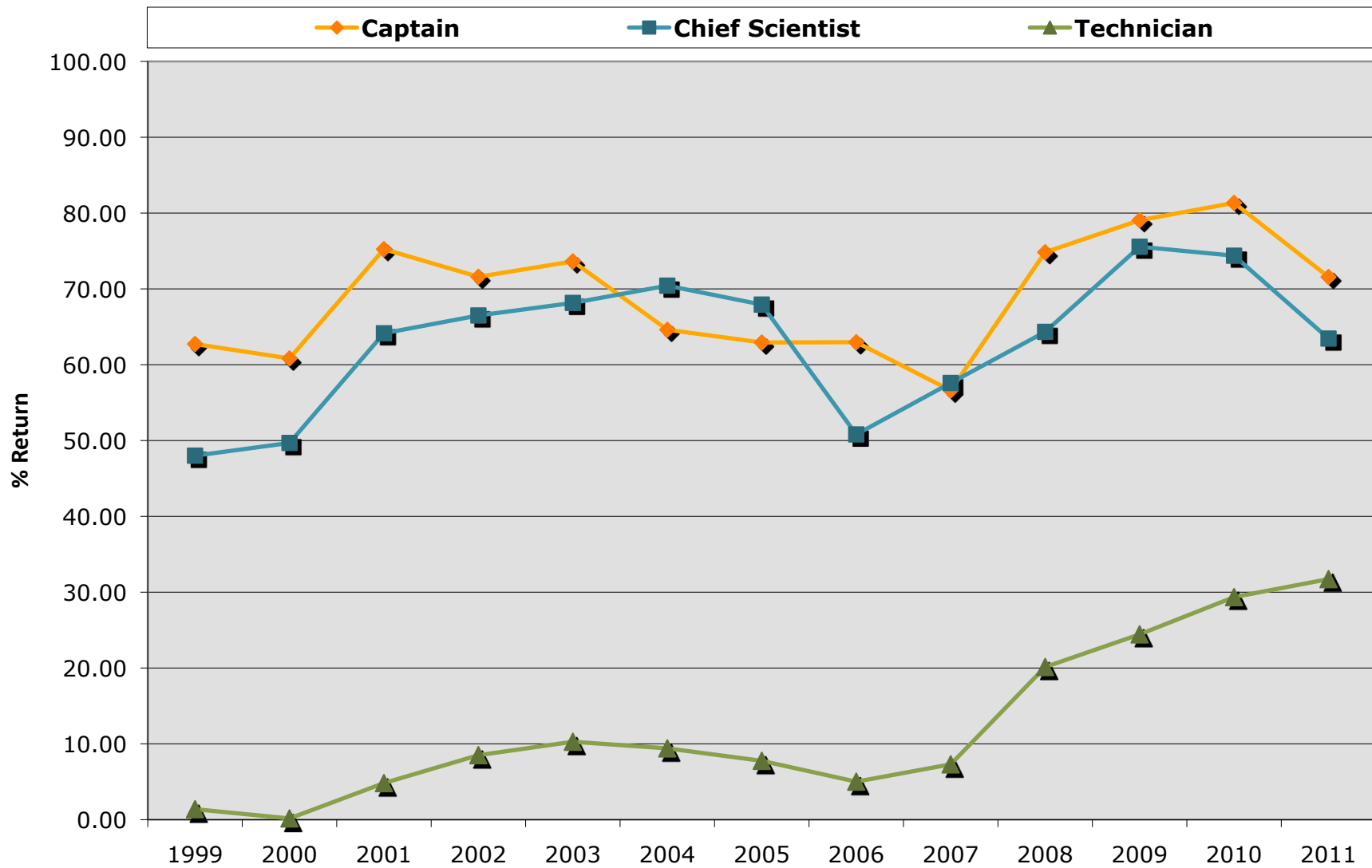
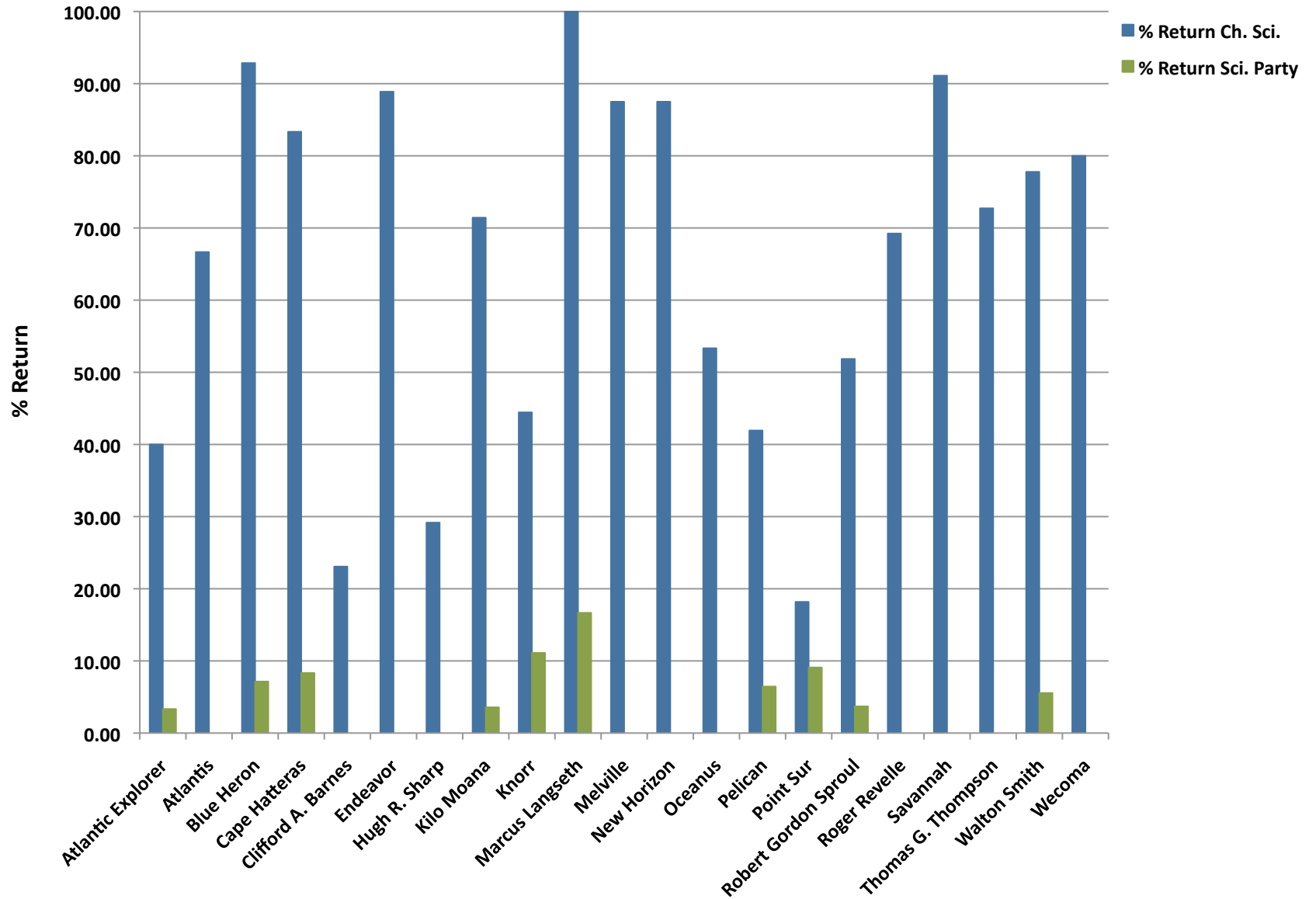


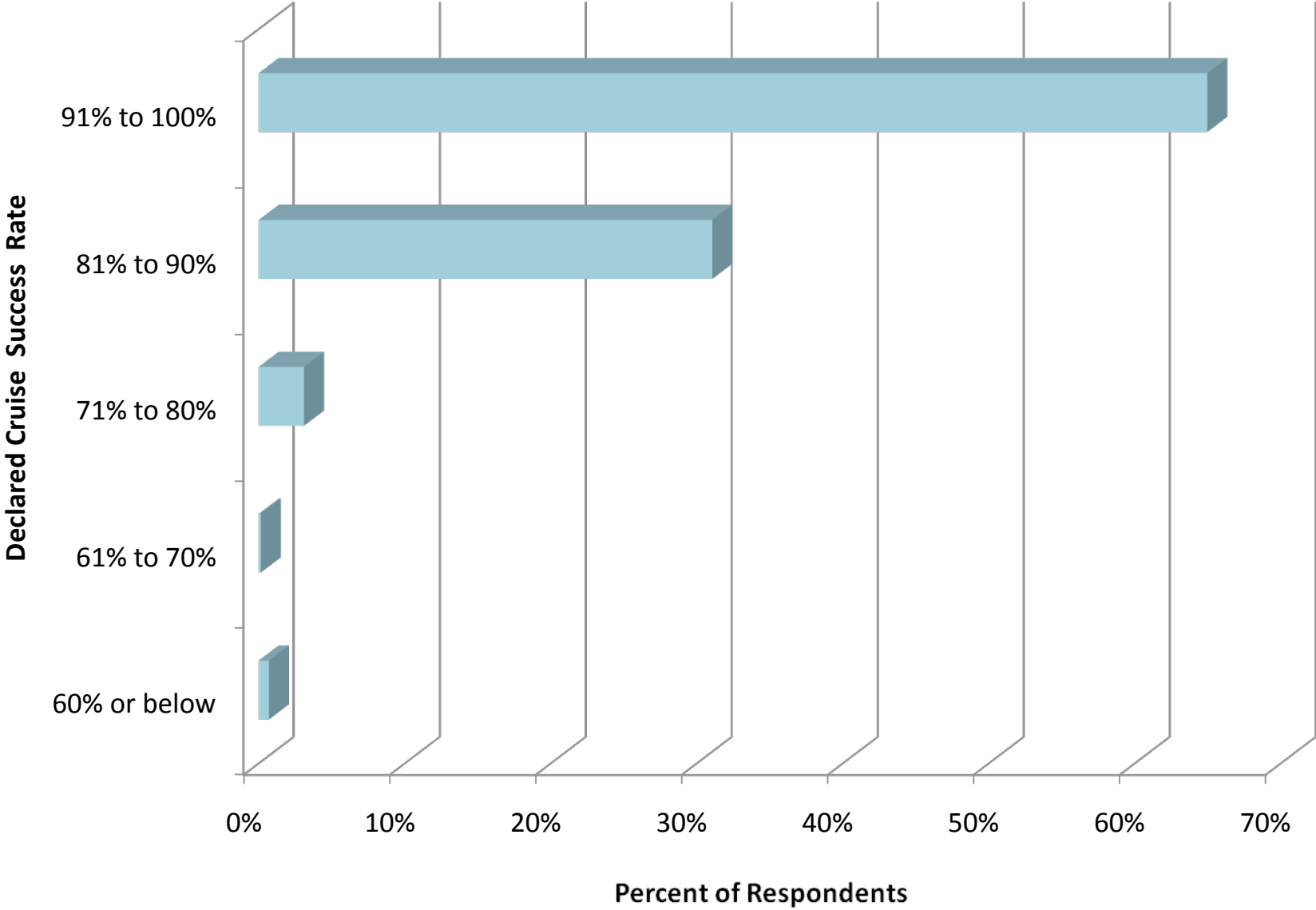
Fleet Percent Return for Post Cruise Assessments 1999 - 2011



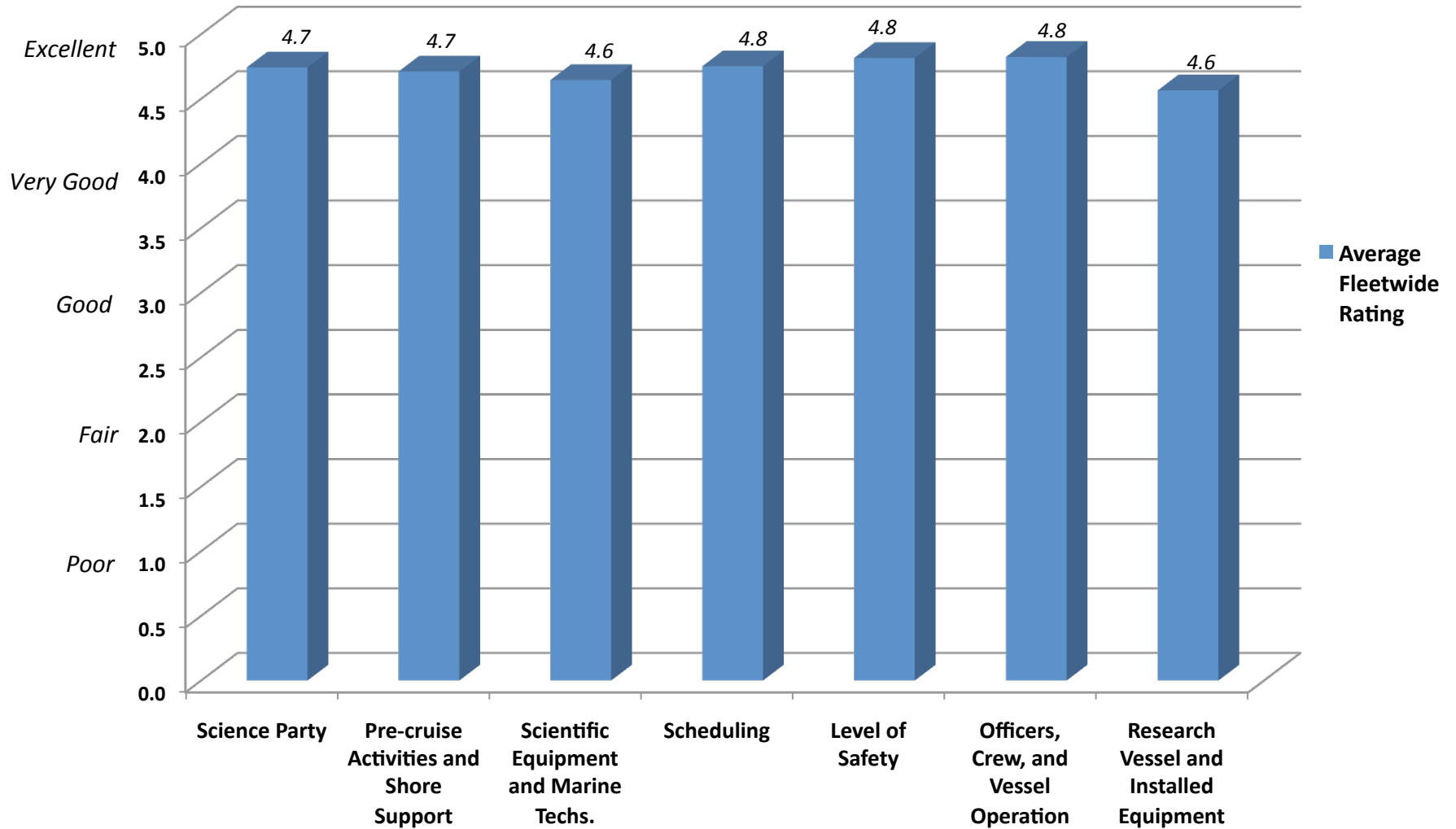
% PCAR Return: Chief Scientists and Science Party, by Ship



To what extent were the planned science objectives of this cruise met?



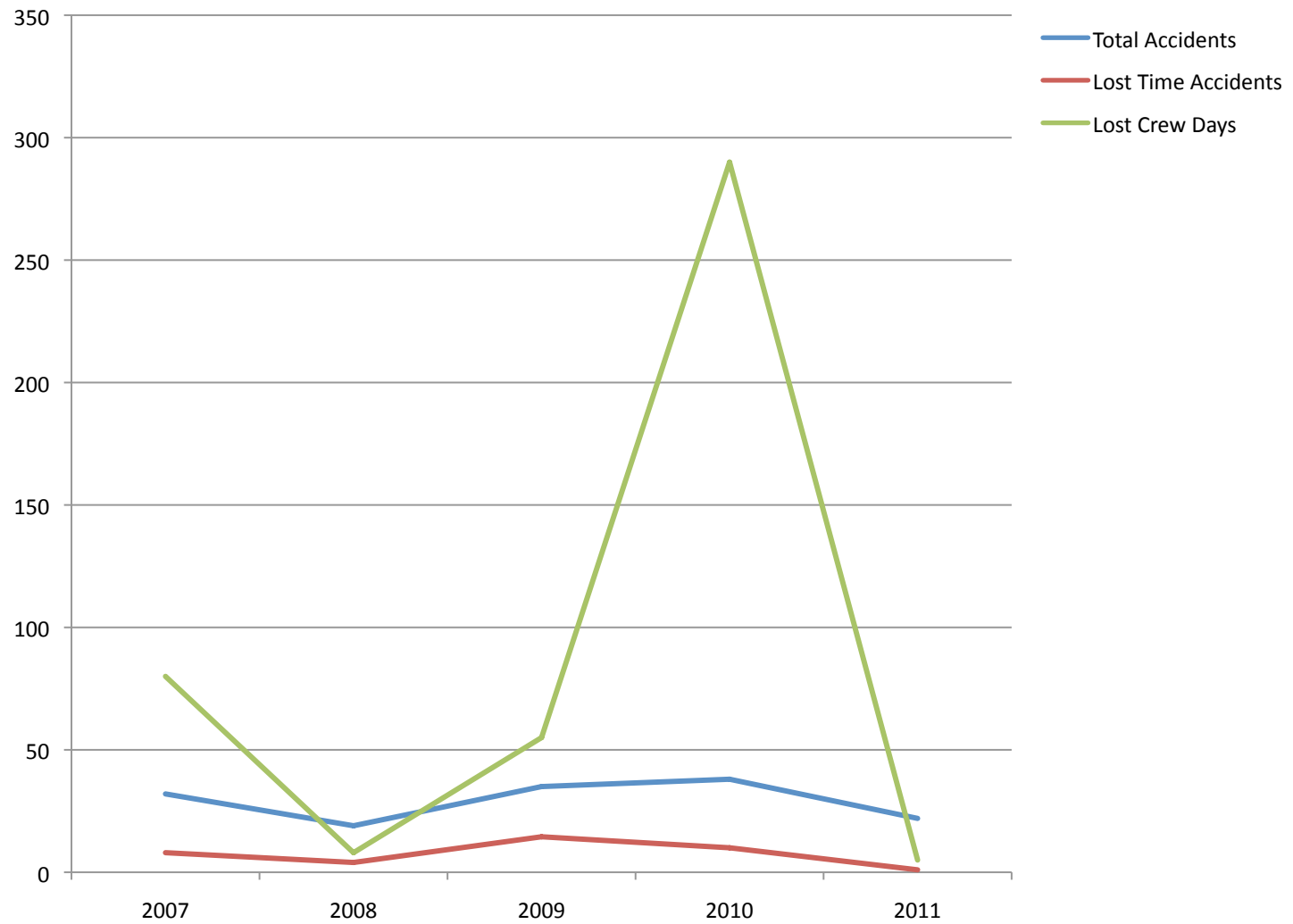
How well did the following elements contribute to achieving the scientific objectives of this cruise?



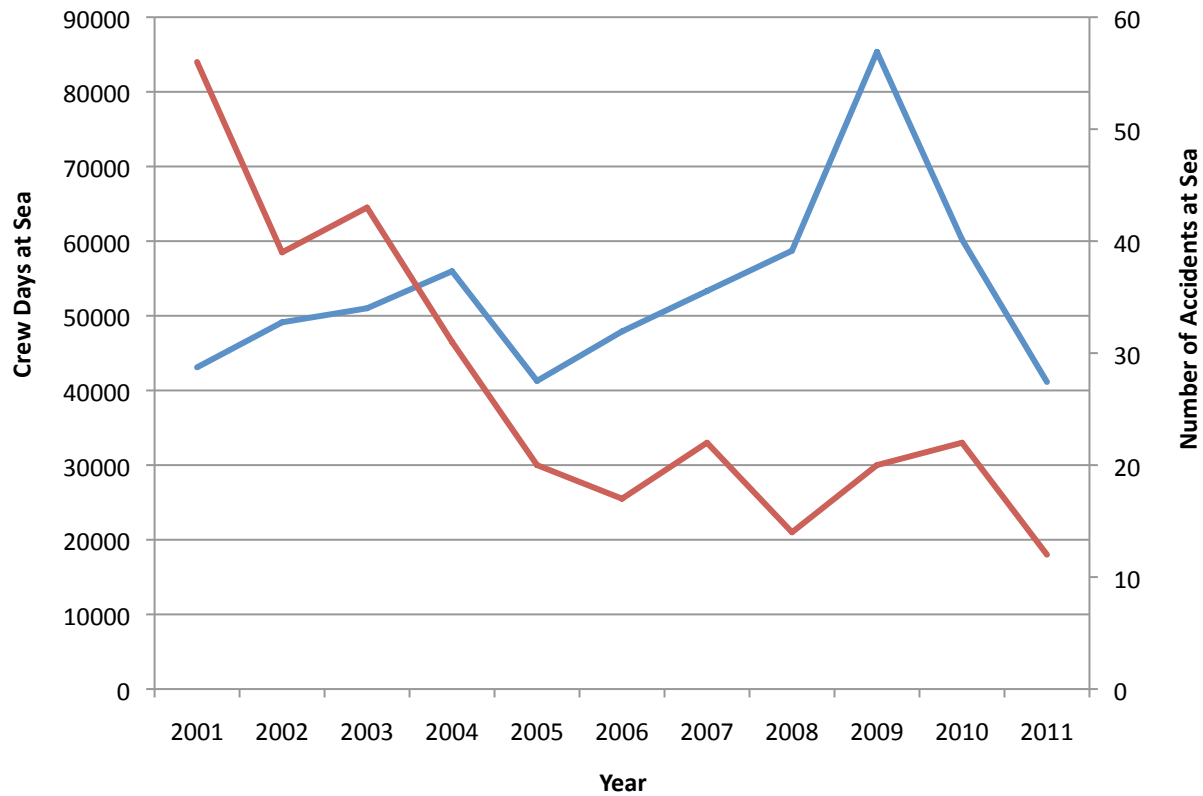
Percentage of Safety Reports Submitted for 2011

2011 RVOC Safety Statistic Reports Received				
Click on the link below to complete reports				
http://www.unols.org/committees/rvoc/rvoc_only/safetyrept.asp				
Quarter Reported	2011-1st	2011-2nd	2011-3rd	2011-4th
Atlantic Explorer	X	X		
Atlantis	X	X	X	X
Blue Heron	X	X	X	X
Cape Hatteras	X			
Clifford A. Barnes	X	X	X	X
Endeavor	X	X		
Hugh R. Sharp	X	X	X	X
Kilo Moana		X		
Knorr	X	X	X	X
Marcus Langseth	X	X	X	X
Melville	X	X	X	X
New Horizon	X	X	X	X
Oceanus	X	X	X	X
Pelican	X	X	X	X
Point Sur				
Robert Gordon Sproul	X	X	X	X
Roger Revelle	X	X	X	X
Savannah	X	X	X	X
Thomas G. Thompson	X	X	X	X
Walton Smith	X	X	X	X
Wecoma	X	X	X	X
Total Ships Reported	19	19	16	16
Total Ships	21	21	21	21
% of Ships Reported	90%	90%	76%	76%

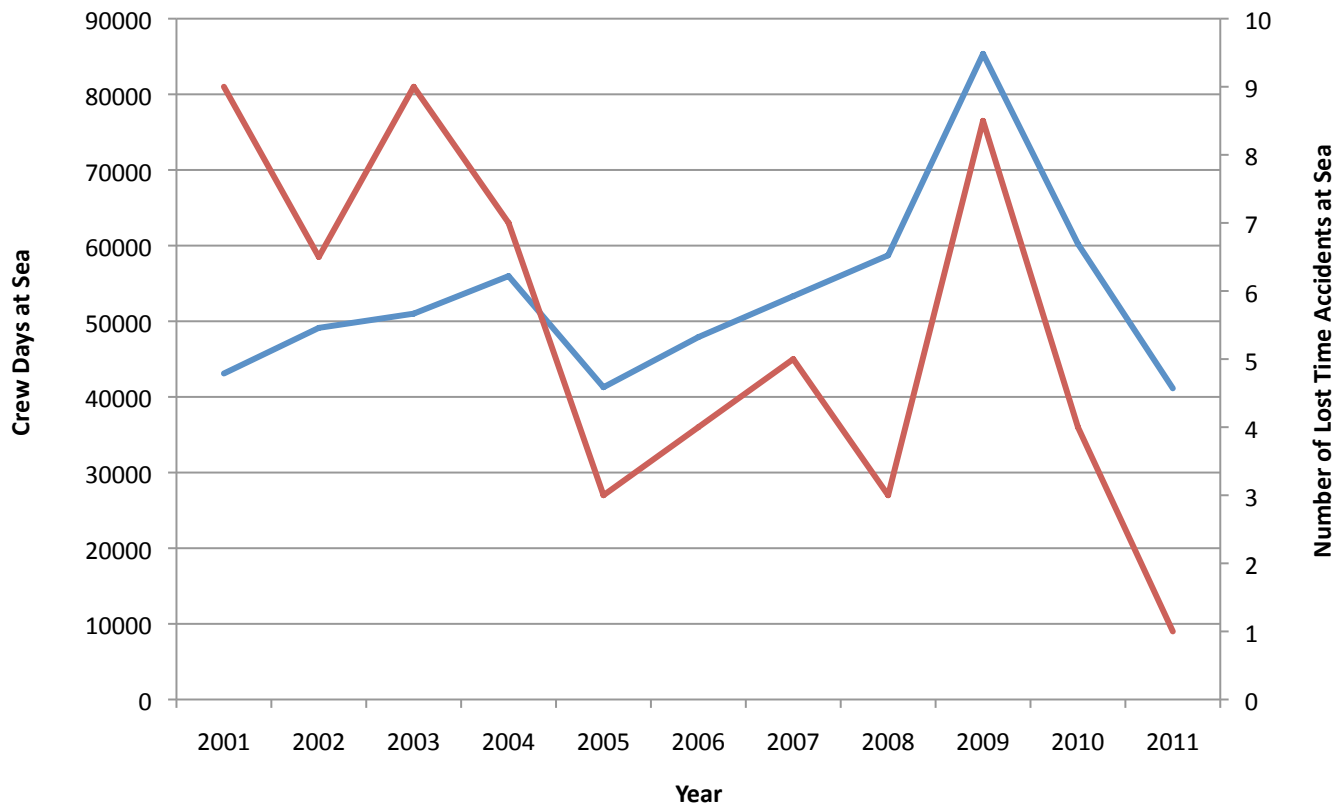
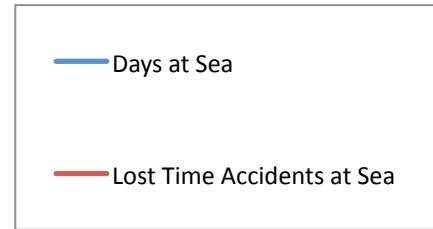
UNOLS Fleet 2007 – 2011 Total Accidents and Lost Crew Days



Total Days at Sea and Total Accidents at Sea UNOLS Vessels 2001-2010



Total Days at Sea and Total Lost Time Accidents at Sea UNOLS Vessels 2001-2010



2011 Lost Time Accidents UNOLS Vessels Per 100 F/T Employees

