

# ARCTIC ICEBREAKER COORDINATING COMMITTEE (AICC)

Report to UNOLS  
6-7 June 2012

*Louis S. St.-Laurent* (rear)  
and *Healy* (front)  
mapping the Arctic  
continental shelf. [Photo  
courtesy USCG]



## Arctic Icebreaker Coordinating Committee (AICC): Current Membership\*

Committee Member	Contact Information	Term Dates
Robin Muench, ESR (Chair)	rmuench@esr.org	01/2007 to 12/2012
Lee Cooper, UMCES	cooper@cbl.umces.edu	09/2008 to 09/2014
Don Perovich, CRREL	donald.k.perovich@usace.army.mil	05/2008 to 05/2014
Karen Frey, Clark U.	kfrey@clarku.edu	10/2009 to 10/2015
Jeremy Mathis, UAF	jmathis@sfos.uaf.edu	10/2009 to 10/2015
Luc Rainville, UW/APL	rainville@apl.washington.edu	11/2009 to 11/2015
Larry Mayer, UNH	larry@ccom.unh.edu	11/2009 to 11/2015
Robert Campbell, URI	rcampbell@gso.uri.edu	01/2010 to 01/2016
Doug Russell, UW (RVOC Rep.)	dgruss@u.washington.edu	07/2010 to ----
Steve Hartz, UAF (RVTEC Rep.)	sjhartz@alaska.edu	05/2007 to ----

\*June 2012

## Some 2011-12 Accomplishments

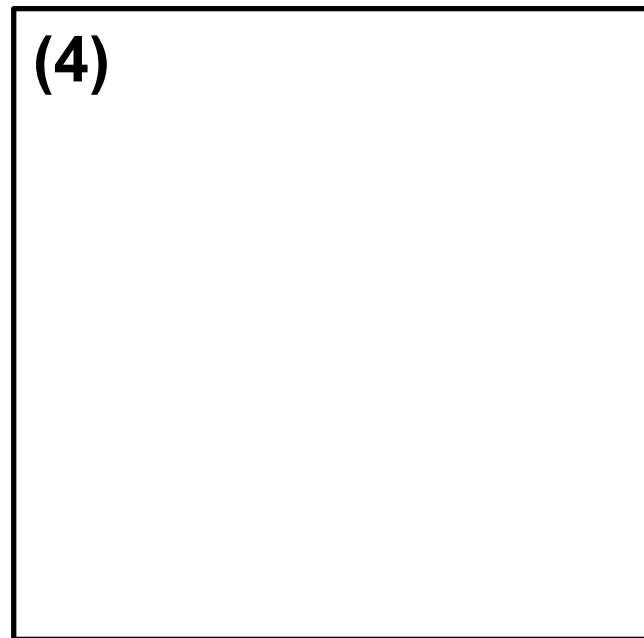
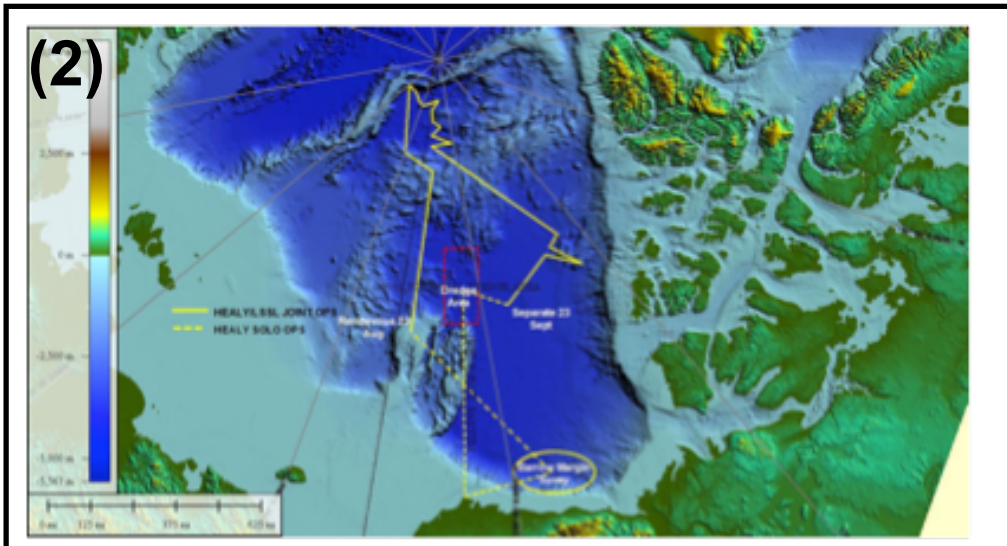
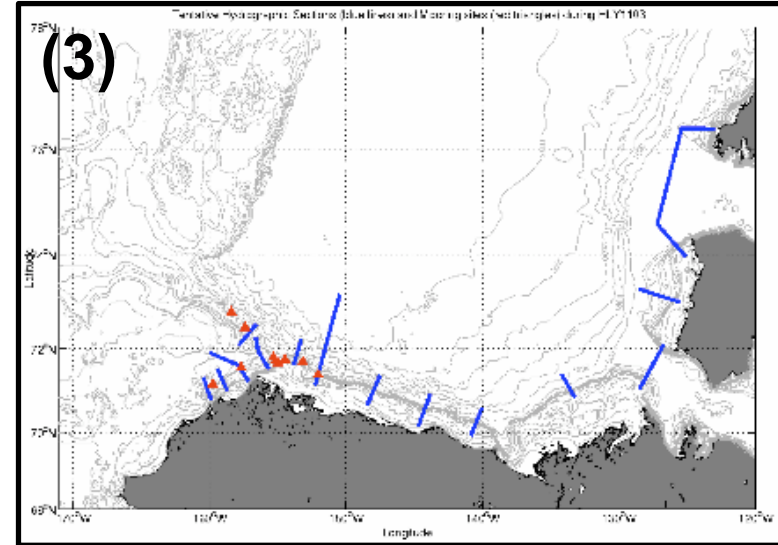
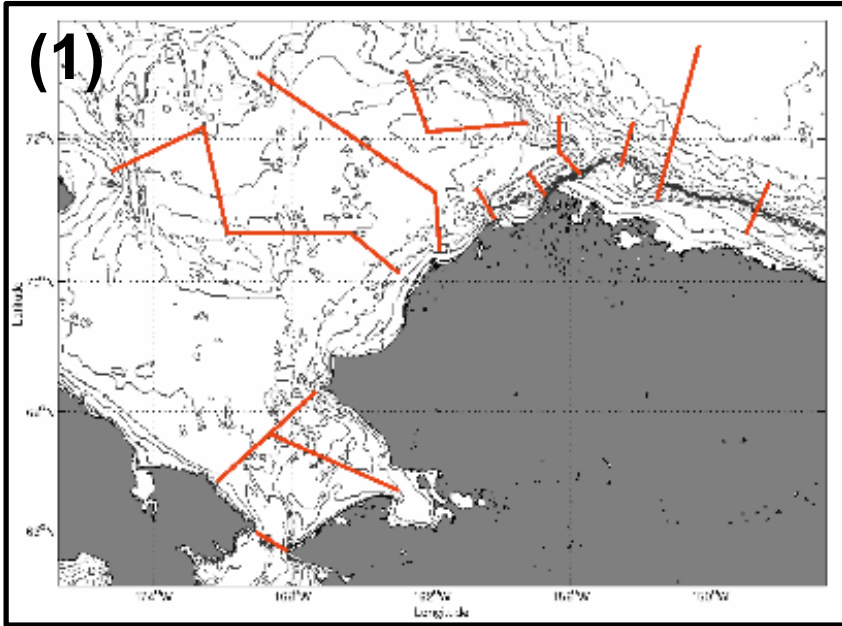
- Completed a record long 2011 field season, including first-ever early winter science operations in the western Arctic, for *Healy*.
- Successfully implemented the new NSF 3-year *Healy* tech support program through grants to SIO and OSU.
- Continued tech training, pursuant to an MOA allowing for training aboard UNOLS vessels, on an opportunistic basis, of USCG personnel.
- Continued to investigate sources and methods for acquisition of real time ice cover data necessary for scientific operations.
- Continued to monitor progress of *Sikuliaq* construction and to aid in publicizing this soon-to-be-operational new research facility to the oceanographic community.
- Continued efforts to improve coordination among research and Alaska Native activities.

## 2011 Field Activities in The Arctic USCGC *Healy*

- (1) **June 25 – July 29, Dutch Harbor - Kodiak:** Impacts of climate on ecosystems and chemistry of the Arctic Pacific Environment. Chief Scientists Kevin Arrigo and Don Perovich
- (2) **August 11 – September 28, Barrow - Barrow:** Multibeam echosounder mapping on the northern Alpha-Mendeleyev Ridge in support of delimiting an Extended Continental Shelf. Chief Scientist Larry Mayer.
- (3) **5 - 27 October, Nome – Dutch Harbor:** Assessment of the Western Arctic Boundary Current and its role in the Arctic ecosystem and climate change. Chief Scientist Robert Pickart
- (4) **November 7 – December 20, Seward – Dutch Harbor:** Early Winter Oceanography in the Bering and Chukchi seas. Chief Scientist Carin Ashjian.

More details available on IceFloe (<http://www.icefloe.net>)

# USCGC *Healy* 2011 Field Season





Shell's new icebreaker *AIVIQ* – a new player in the W. Arctic



[Anchorage Daily Times March 2012]

# Online Information Sources for the AICC

The **UNOLS** Website:

<http://www.unols.org/committees/aicc/>

The **IceFloe** Website  
(maintained by the US  
CG)

<http://www.icefloe.net>

