



National Science Foundation
WHERE DISCOVERIES BEGIN

NSF/OCE/IPS Ship Operation Rose Dufour

June 6-8, 2012

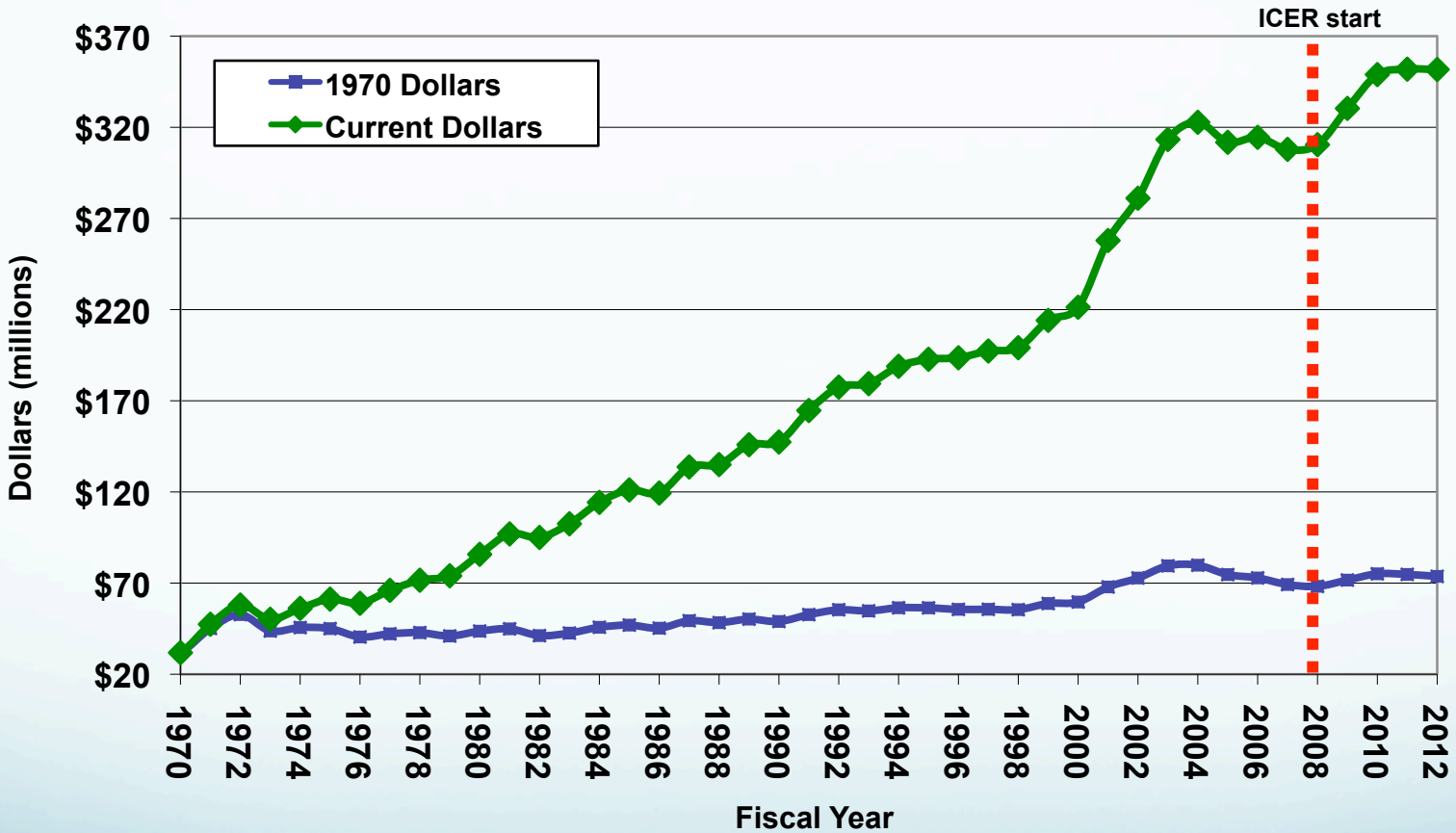
UNOLS FIC/Council

Rev
1Ver:3

2012 NSF Budget News

- 2012 Ship Ops budget was Level Funded from 2011
- Ship Costs increased from 2011 to 2012 by ~10%
- Total 2012 Ship Utilization at 3597, down from 3801 in 2011
- Ship Utilization by NSF remains high @ 2299 days, which represents a slight increase over 2011
- Ship Utilization by other Federal Agencies dropped by ~281 days. NSF is funding ~ 65% of total UNOLS ship days
- ARRA funds have been expended, and carry-forward (residual) amounts saw a sharp decline

OCE Annual Budget



Facts contributing Higher Ship Costs



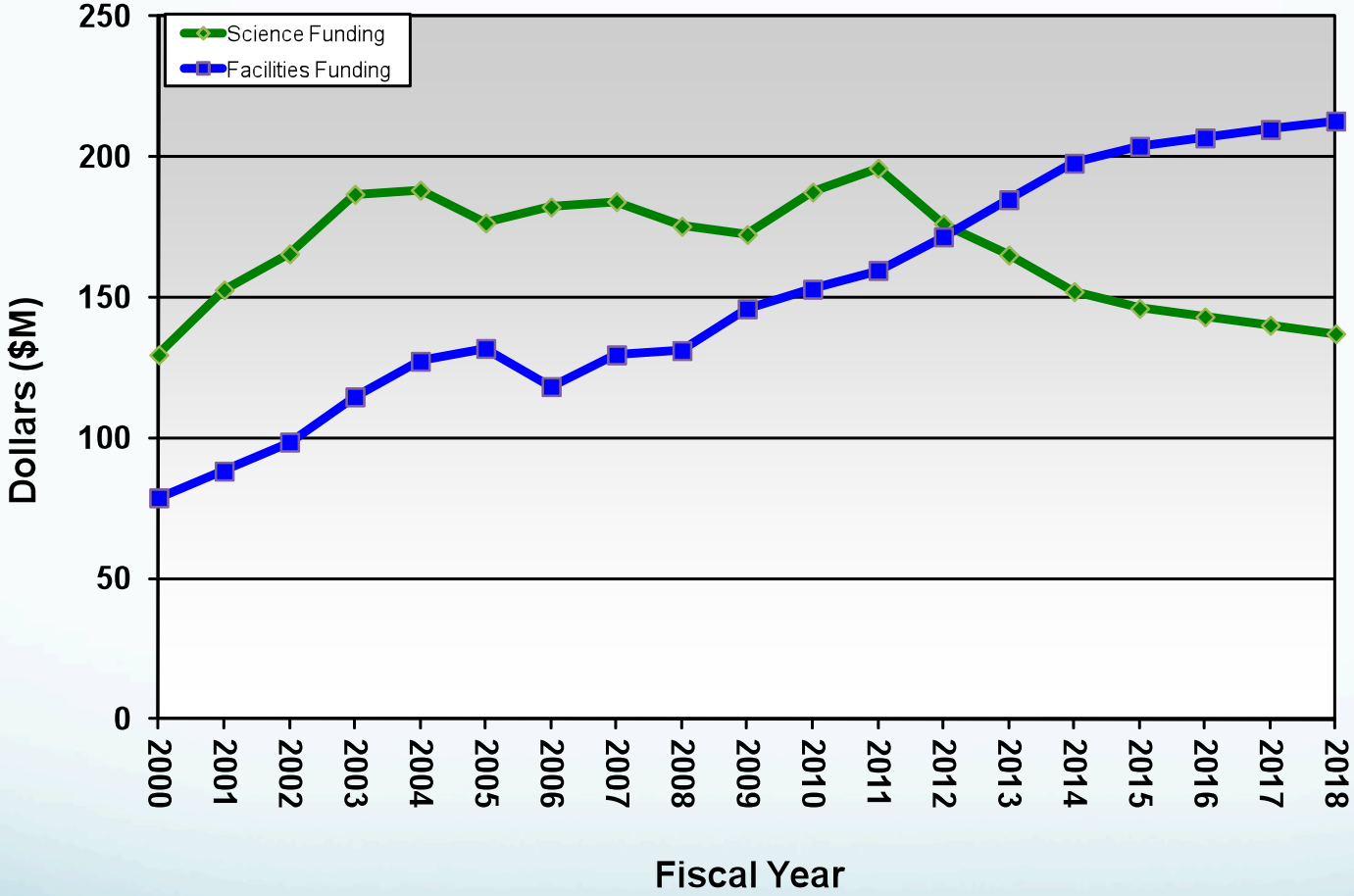
Higher daily rates



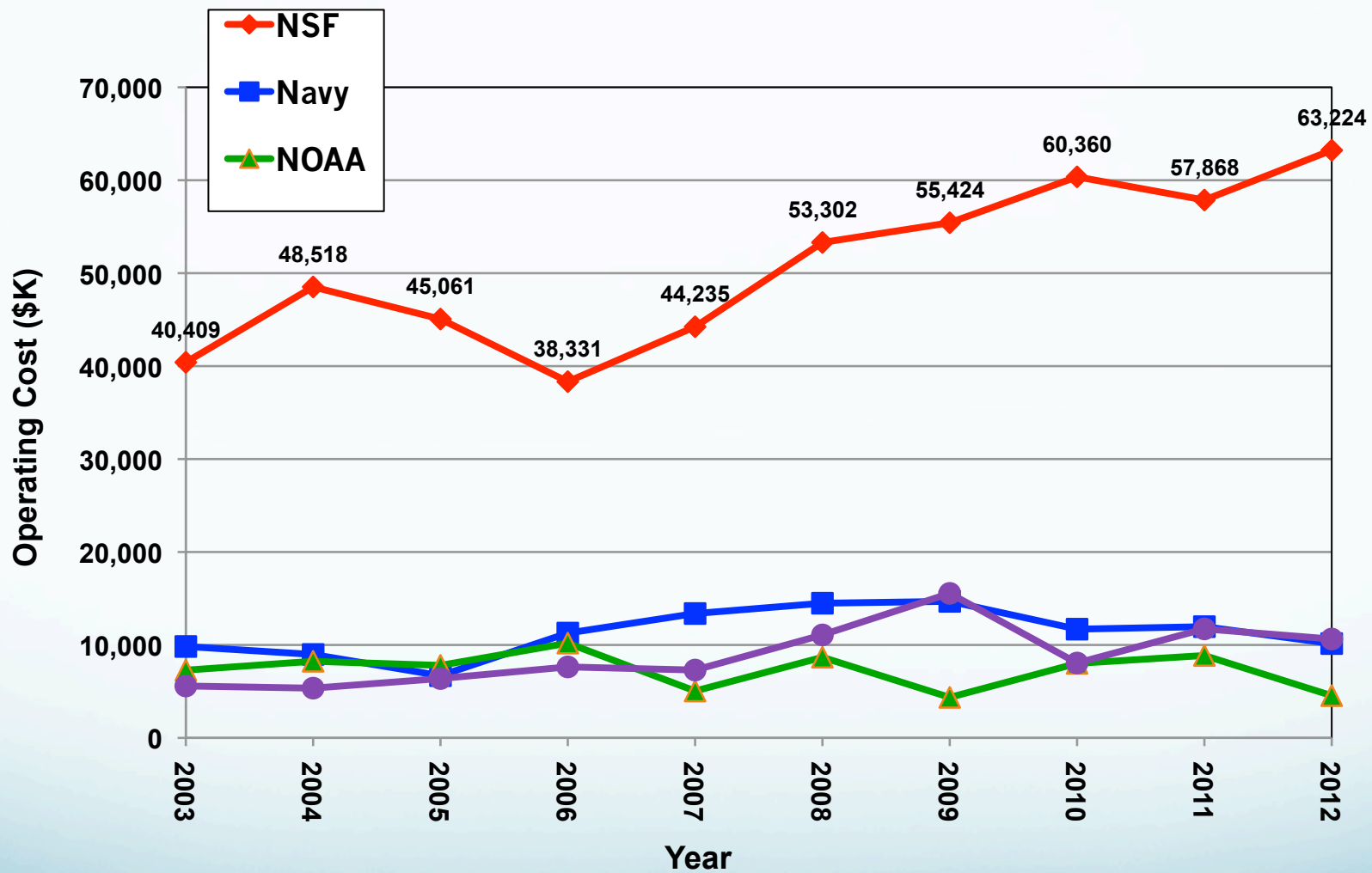
*Lower Utilization,
*higher fuel costs,
*higher costs in
shore support (fringe
benefits and IDC rate
increases)



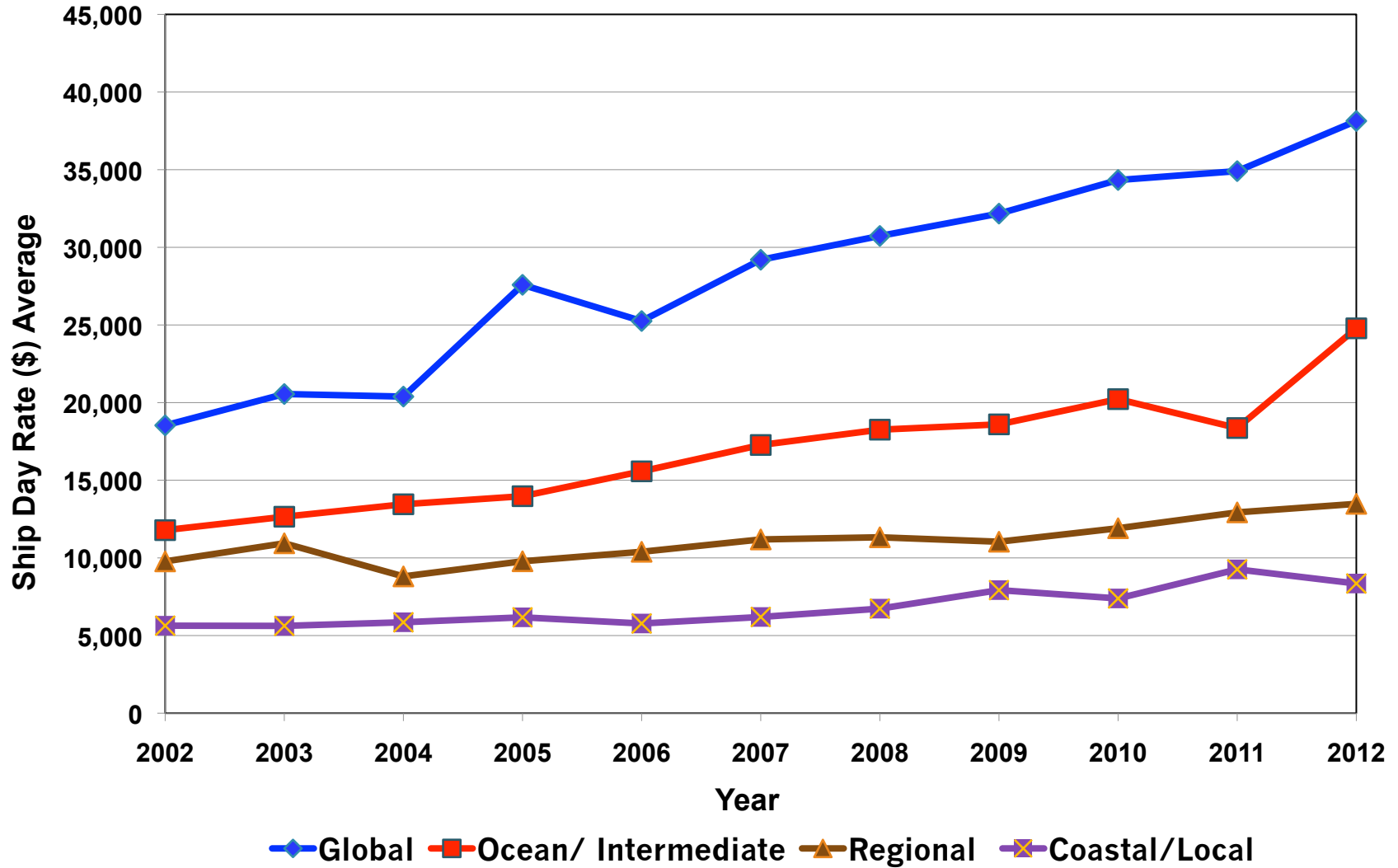
OCE Science vs Facilities Funding



Fleet Operating Cost by Agency 2003-2012*

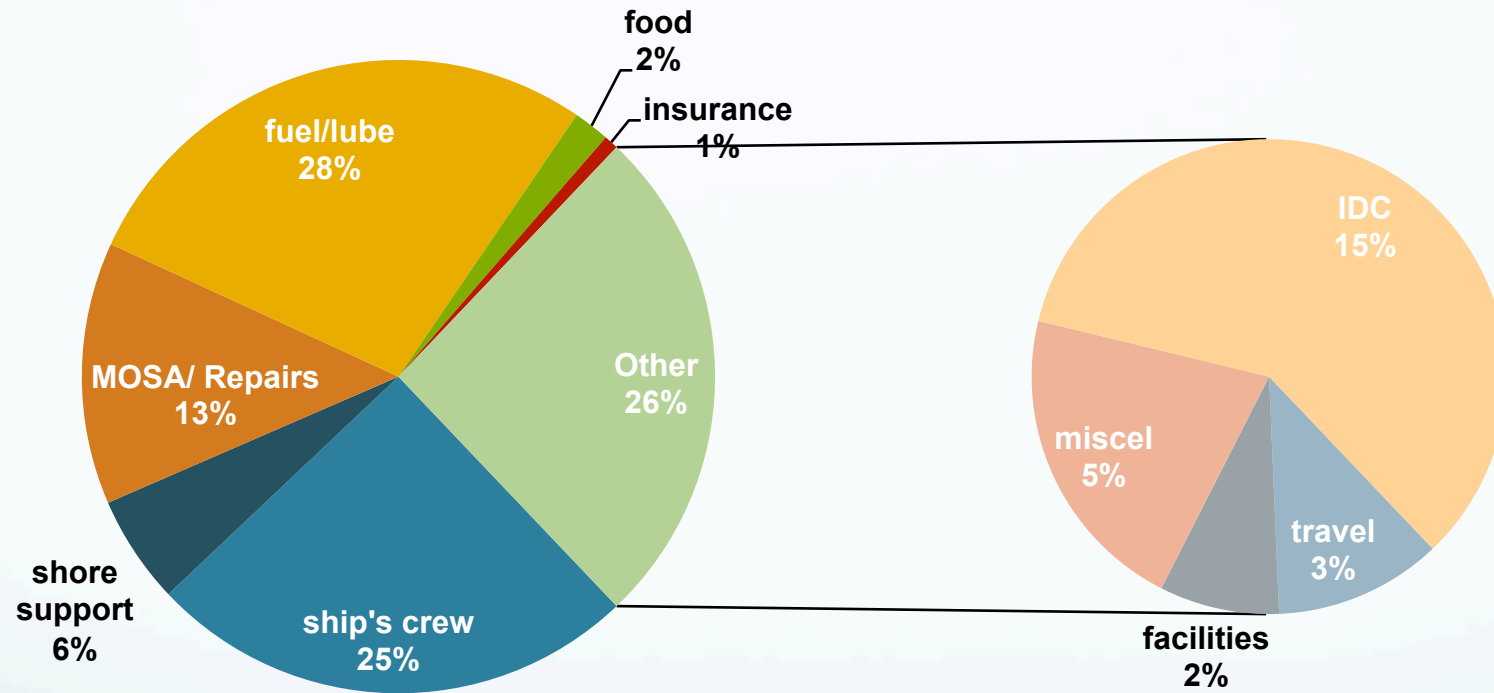


Average Day Rates by Class: 2002 - 2012*



* FY 2012 is estimated

Ship Day Rate Break-down



NSF Programs

- Frontiers in Earth Systems Dynamics" (FESD) Program is a cross-directorate program. UNOLS ship time will need to be included in the proposal budget,
- Coastal-SEES will have \$2M set aside for ship operations. This does not come out of OCE/IPS budget. Target date for proposal submission January 15, 2013. Ship time would likely be for 2014.