



SCHMIDT OCEAN INSTITUTE



Pete Zerr
UNOLS RVOC 2012

Vision and Mission

Schmidt Ocean Institute supports research projects that help expand the understanding of the world's oceans through technological advancements, data-rich observation and analysis, and open sharing of information.



L - 272 ft

B- 42.5 ft

HP- 7,888

Tunnel Bow
Thruster

Twin screw
(CPP)

1930 G.T.

Main Deck Lab Areas

8 m² Workshop

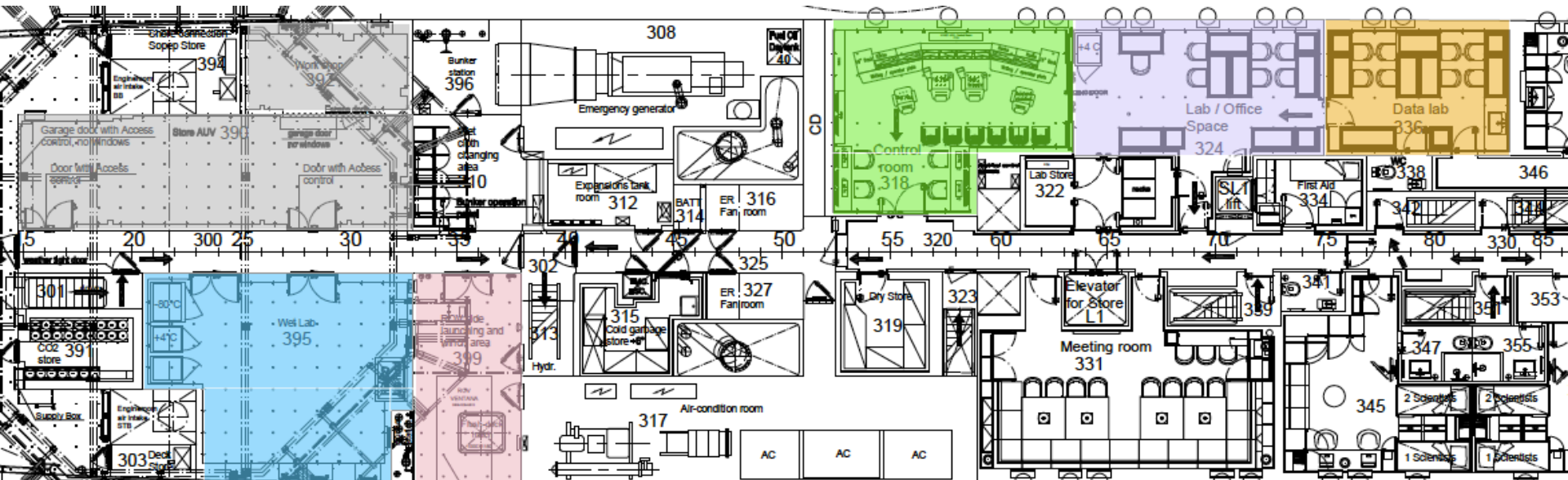
30 m² Staging Bay

17 m² ROV Launch area

28 m² ROV / Echosounder Control Room

26 m² Dry Lab / Office Space

17 m² Data Lab



Wet Lab



ROV Control Room



Dry Lab





161

1261

MAX GROSS: 0.000 kg

I
D
N
O
H
1
1
4
9
8
V
3
7
1
2
1

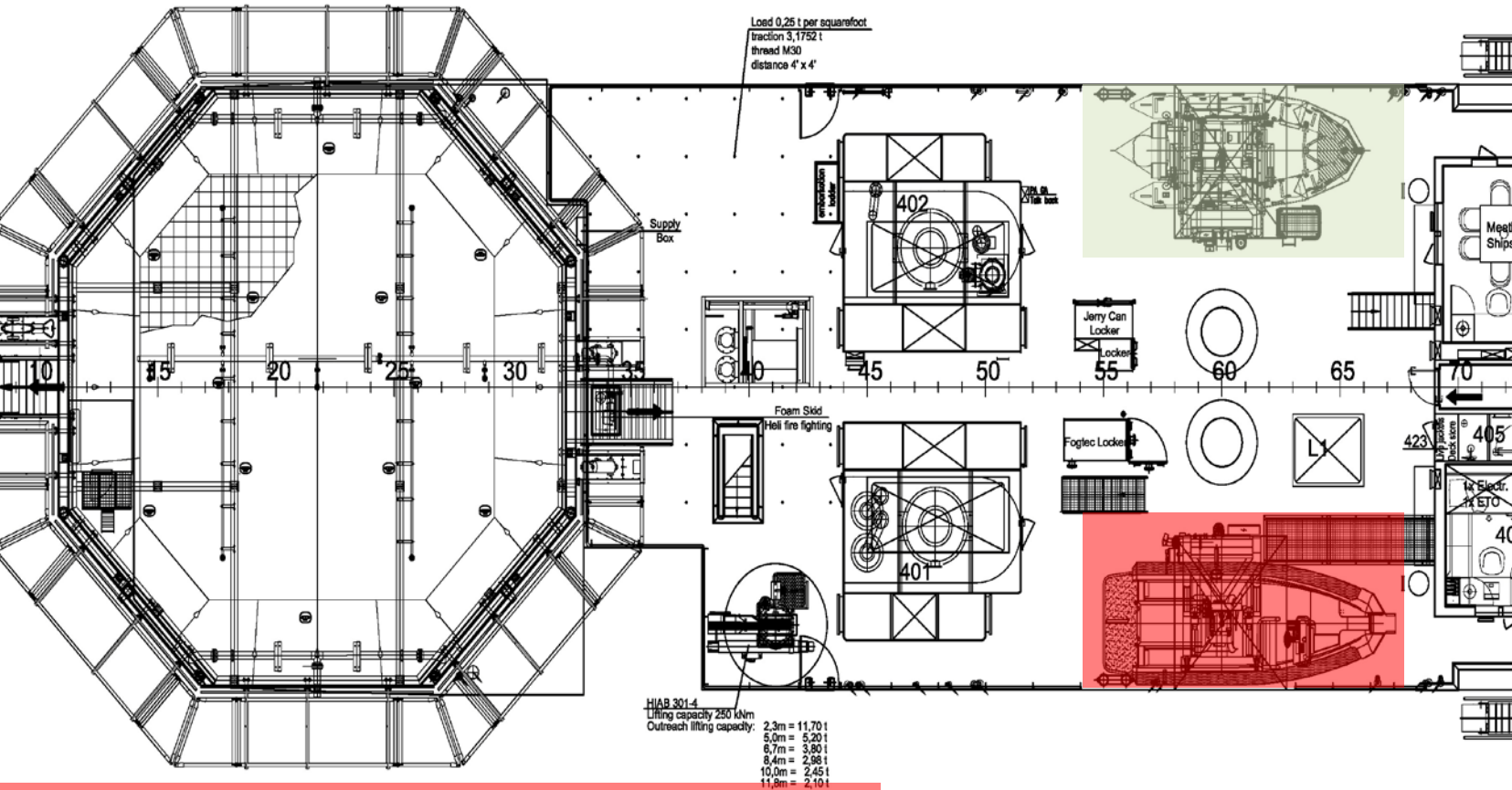
MAX GROSS: 0.000 kg

I
D
N
O
H
1
1
4
9
8
V
3
7
1
2
1

Port side boat

6.0 m (20 ft) Zodiac Fast Rescue Boat FRB 600
6 persons capacity, on Port side rescue davit

Work Boats



Stbd side boat

6.4 m (21 ft) SAFE boat, 12 persons capacity,
on Starboard side heave-compensating davit

FRB



SafeBoat

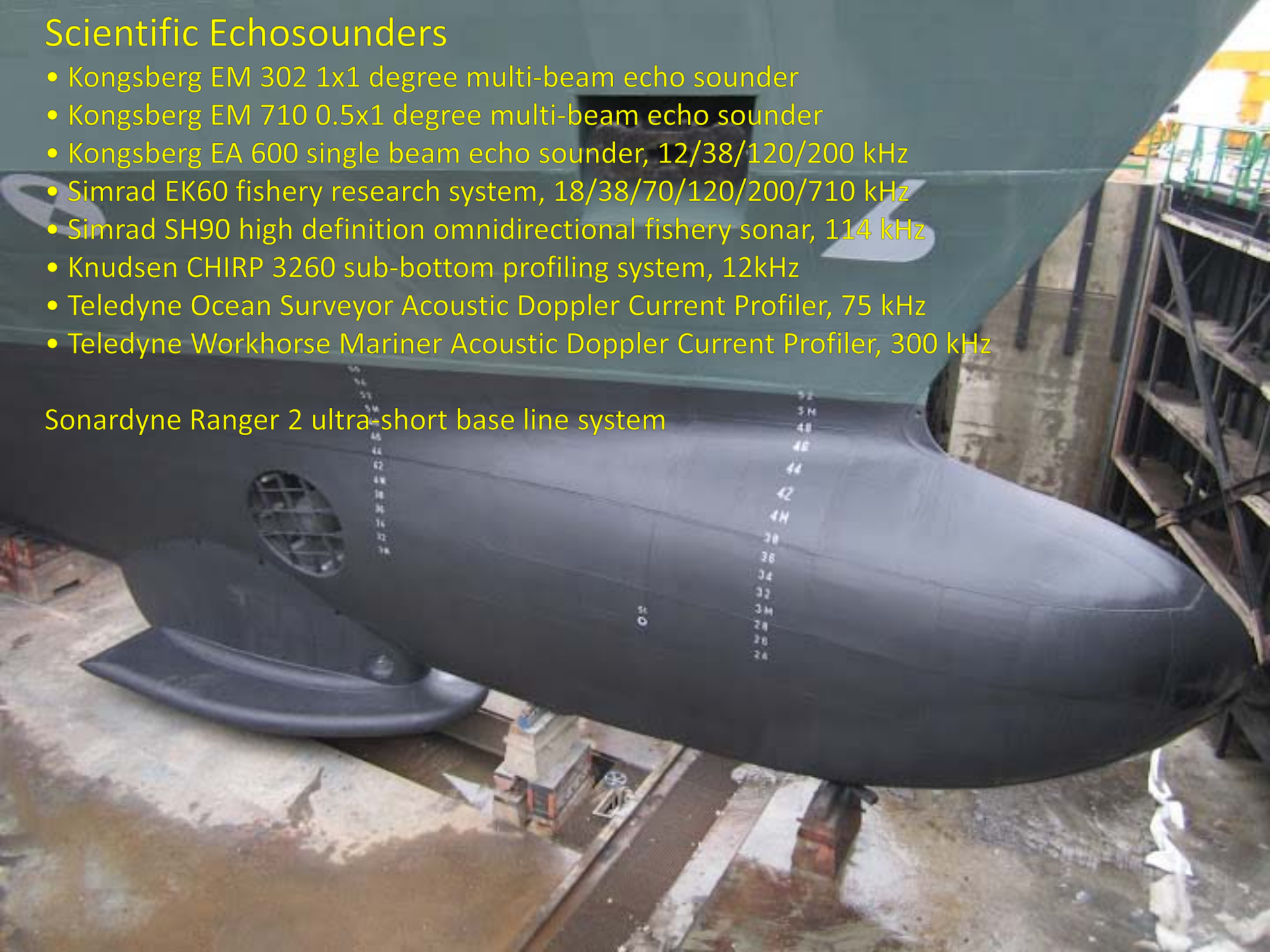




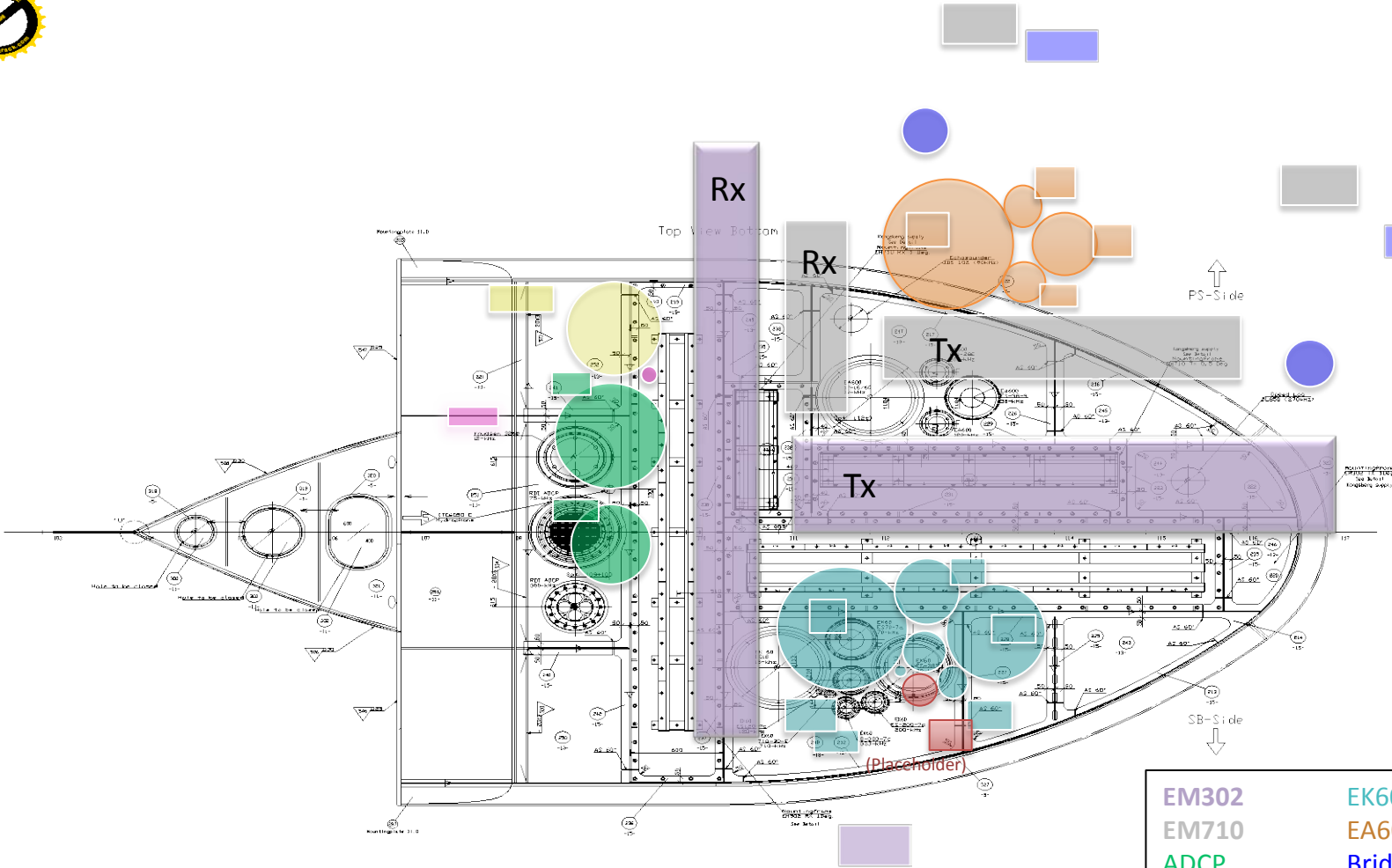
Scientific Echosounders

- Kongsberg EM 302 1x1 degree multi-beam echo sounder
- Kongsberg EM 710 0.5x1 degree multi-beam echo sounder
- Kongsberg EA 600 single beam echo sounder, 12/38/120/200 kHz
- Simrad EK60 fishery research system, 18/38/70/120/200/710 kHz
- Simrad SH90 high definition omnidirectional fishery sonar, 114 kHz
- Knudsen CHIRP 3260 sub-bottom profiling system, 12kHz
- Teledyne Ocean Surveyor Acoustic Doppler Current Profiler, 75 kHz
- Teledyne Workhorse Mariner Acoustic Doppler Current Profiler, 300 kHz

Sonardyne Ranger 2 ultra-short base line system



Gondola



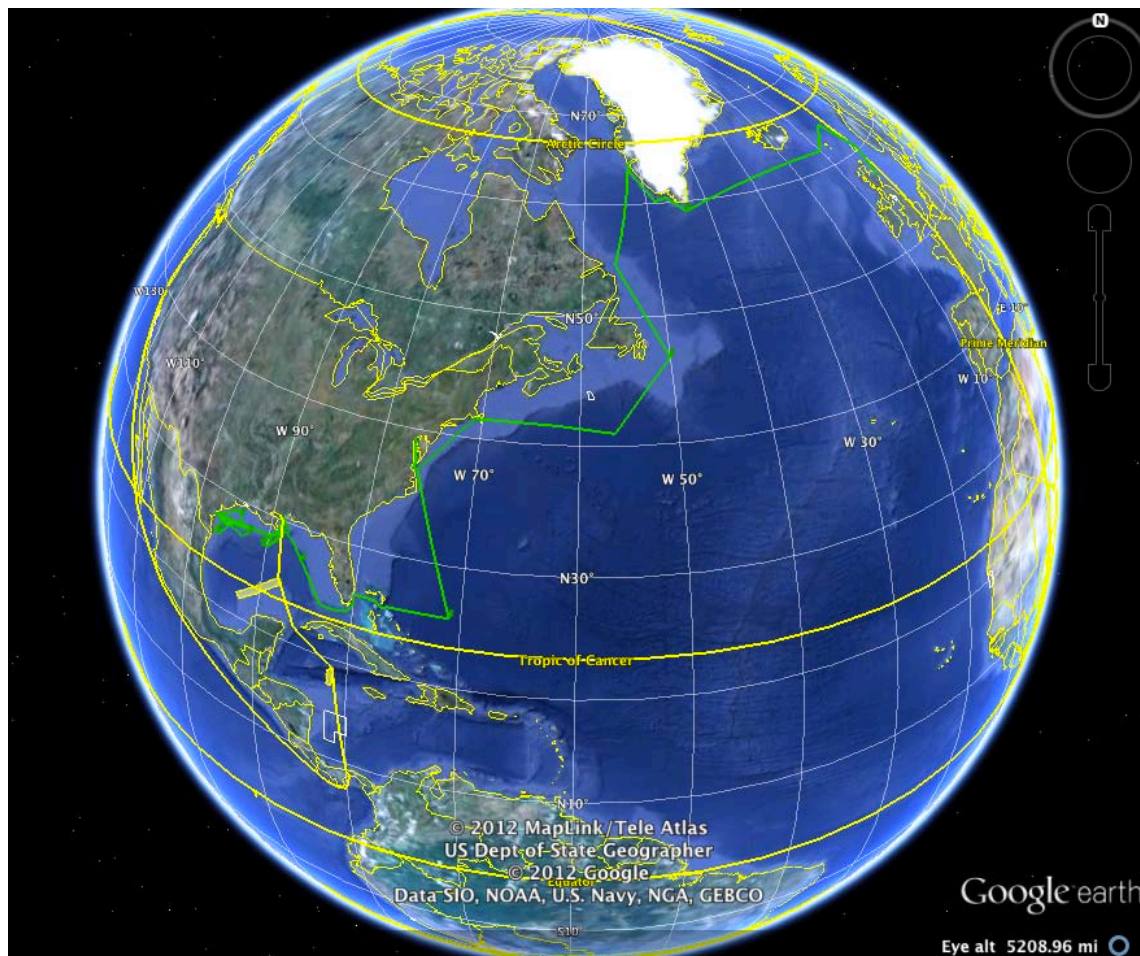
EM302	EK60
EM710	EA600
ADCP	Bridge Equip

Sound Velocity Probe





Falkor cruises



Sensors

- TSG: Thermosalinograph
- SVP: Sound Velocity Probe
- XBT: Expendable Bathythermograph
- SVP: Sound Velocity profiler
(AKA Bathyvelocimeter)
- CTD: Conductivity Temperature Depth

Precise Positioning Services

- Seapath 320
- CNAV

Software

- Hypack
- Winfrog
- Caris
- Fledermaus