



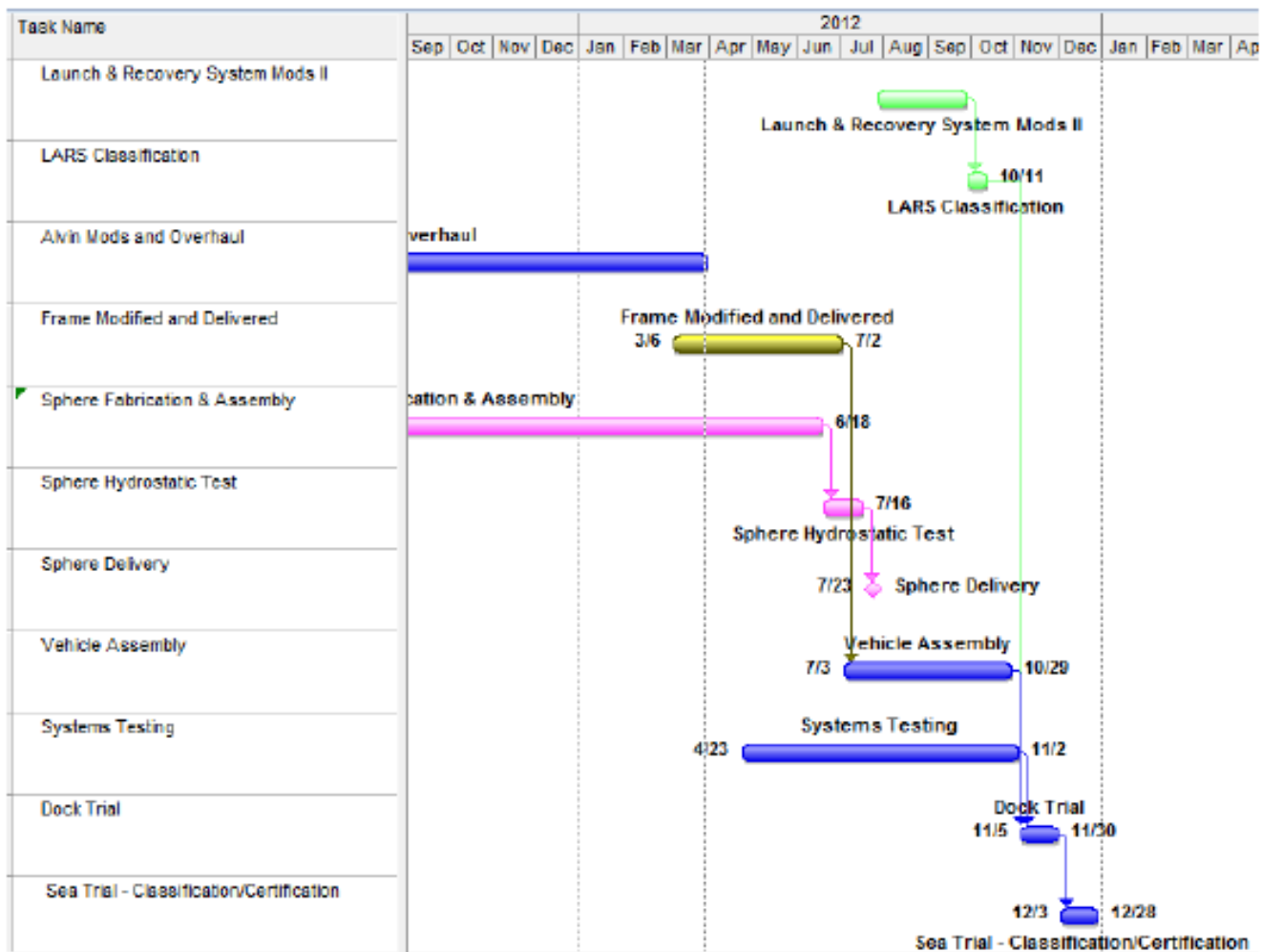
Executive Program Review March 2012

# Alvin Upgrade Project





# Target Schedule





# Launch and Recovery System Status

## Upgrades Completed:

- A-Frame upgraded
- Deck reinforced under tracks
- Tested to 50,000 lb rating

## Upgrades to Complete:

- Swinging Beam Assembly
- Reinstall, integrate and test the swinging beam and controls
- ABS Classify the Launch and Recovery System (LARS)
- NAVSEA certify select system attributes



Installing the A-frame  
March 2011



## Schedule

- Begin swinging beam modifications ✔ Oct 2011
- Interagency communication from NAVSEA to NSF on Certification/Classification Requirements ✔ Oct 2011
- Deliver modified swinging beam and controls Jun 2012
- Reinstall swinging beam and test Aug 2012
- Integrate LARS with R/V *Atlantis* Oct 2012
  - Complete ABS Class & NAVSEA Cert process



Static Weight Test, 200% of Rated Load BAE JAX April 2011



## Project Challenges

### Meet WHOI sailing schedule for Dec 2012

- Start hydro early June, Deliver to WHOI early July
  - Accept opportunities to improve the schedule
- Frame delivery for mid-July
  - Select low risk alternatives for progress on the frame
- WHOI meet ECA submittal dates
- LARS classification/certification in early October



## Meeting Challenges

- WHOI proceed with low risk alternatives
  - Identify low risk alternatives and communicate the risk level and consequences
  - Examples:
    - NDT the frame prior to design approval
    - Begin frame member fabrication prior to design approval
- ABS and NAVSEA expedite reviews and approvals
  - Reduce review process to 4 weeks or less
  - WHOI accelerate development of documentation



