



Organizational Overview of Ice Breaker Support in Barrow

**AICC Meeting
Seattle, WA
March 2012**



Great news and opportunity for CH2MHILL Polar services in October 2011...

- NSF has awarded CH2MHill Polar Services with the new Arctic Contract in October 2011
- 4-year award with the possibility of up to two 2- year options.



CH2MHILL Polar Services

NSF's Arctic logistics contractor is now comprised of 4 entities:
New addition of UMIAQ



CH2MHILL

- Prime contract holder
- Program management
- Contract compliance
- Subcontracting
- Procurement
- Finance/accounting
- Engineering
- Safety
- Scheduling & controls
- Business systems



- Day to day operations
- Project planning
- Project implementation
- Field office management
- Researcher interaction



- Comms equipment
- Comms engineering
- Customized systems



- Barrow on-the-ground support
- Local hires
- Community participant/PRO hires
- NSB and UIC permitting



Support Services

We annually provide field logistics to over 140 science projects throughout the arctic.

Regions:

- Alaska
- Greenland
- Canada
- Russia
- Arctic Ocean
- Northern Europe

Services:

- Field camps
- Camping gear
- Air & ground transport
- Cargo movement
- Communications
- Construction & engineering
- Remote medical support
- Safety training



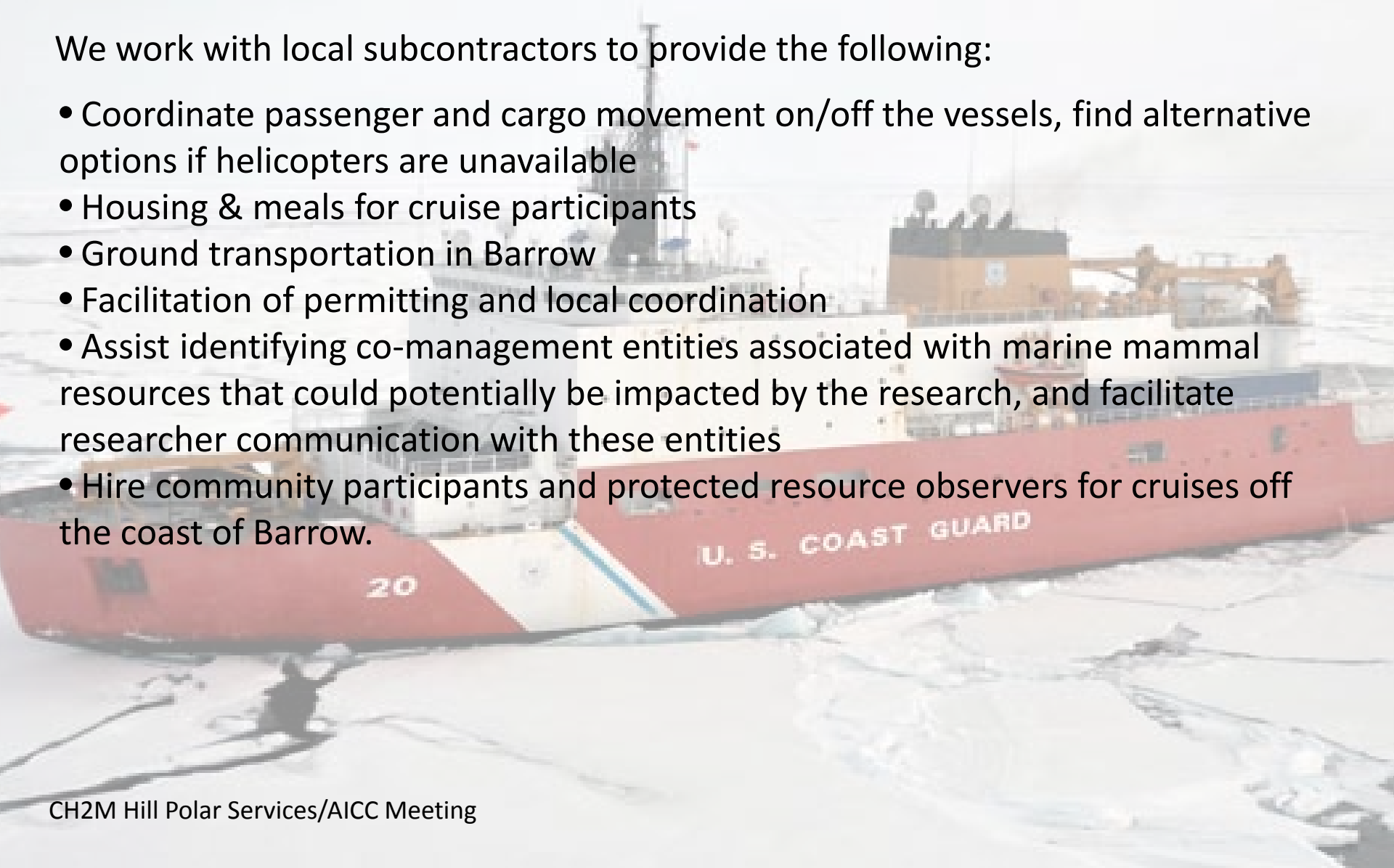
CPS role in Barrow

- NSF has tasked CPS with planning & subcontracting for science support
- CPS is your lead contact for Barrow support
- Process:
 - CPS has designated Project Managers who gather information for each project - Faustine@polarfield.com or Josh@polarfield.com
 - We identify special requirements for each group
 - We contract primarily with UMIAQ for resources
 - We work with local entities to facilitate permitting
 - We track approved scope and budgets

CPS role in supporting Barrow logistics stopover

We work with local subcontractors to provide the following:

- Coordinate passenger and cargo movement on/off the vessels, find alternative options if helicopters are unavailable
- Housing & meals for cruise participants
- Ground transportation in Barrow
- Facilitation of permitting and local coordination
- Assist identifying co-management entities associated with marine mammal resources that could potentially be impacted by the research, and facilitate researcher communication with these entities
- Hire community participants and protected resource observers for cruises off the coast of Barrow.



Contact list for marine mammal subsistence resource groups in Northern

Alaska - Prepared by: Joshua Bacon at Polar Field Services Inc. January 17, 2012

Alaska Eskimo Whaling Commission (AEWC)

President: Johnny Aiken

e-mail: aewcdir1@gci.net

Address: P.O. Box 570; Barrow, AK 99723

Phone: (907) 852-2392

Chairman: Harry Brower

e-mail: harry.brower@north-slope.org

Address: P.O. 69; Barrow, AK 99723

Phone: (907) 852-0350

There is also a captain's association in all eleven whaling communities in Alaska - Barrow, Kaktovik, Kivalina, Little Diomedes, Nuiqsut, Point Hope, Point Lay, Wainwright, Whales, Savunga, Gamble. AEWC request that all communication with local village whaling captain's associations be done through AEWC.

Barrow Whaling Captain's Association (BWCA)

President: Eugene Brower

Phone: (907) 852-3601

Chairman: Harry Brower

Can be reached through the North Slope Borough Dept. of Wildlife Management

Phone: (907) 852-0350

Alaska Beluga Whale Committee

Primary contact: Robert Suydam

P.O. Box 69

Barrow, AK 99723

Phone: (907) 852-0350

e-mail: robert.suydam@north-slope.org

Chair: Willy Goodwin

Address: P.O. Box 334; Kotzebue, AK 99752

Phone: (907) 442-3276

e-mail: argagiaq@gmail.com

Alaska Nanuuq Commission

Executive Director:

Executive Assistant: Brenda Green

Phone: (907) 443-5044

Fax: (907) 443 - 6050

e-mail: jo.akanuuq@gci.net

Address: P.O. Box 946; Nome, AK 99762

Ice Seal Committee (ISC) (Under Nanuuq Commission)

Chairman: John Goodwin

Eskimo Walrus Commission

Under Kawerak Inc. Natural Resource division

Address: Box 948

Nome, AK 99762

Phone: (907) 443-4269

Administrative assistant: Marlene Jaycox

Phone: (907) 443-4360 - Direct Line

(907) 443-4484 - Fax line

e-mail: mjaycox@kawerak.org

Director: Vera Metcalf

Phone: (907) 443-5231

North Slope Borough Dept. of Wildlife Management

P.O. Box 69

Barrow, AK 99723

Phone: (907) 852-0350

Director: Taqulik Hepa

e-mail: taqulik.hepa@north-slope.org

Deputy Director: Harry Brower

e-mail: harry.brower@north-slope.org

Senior Scientist: Craig George

e-mail: craig.geroge@north-slope.org

New Barrow support model in 2012: UMIAQ will take on non-NSF supported projects

- In 2011: CPS support model for Barrow area NSF-funded projects changed as of January 1st of 2011. Primary responsibilities for on-the-ground support shift from BASC to UMIAQ, a subsidiary of the Ukpeaġvik Iñupiat Corporation (UIC).
- In late 2011: UIC has separated its ties with BASC. And, UIC is in committed to enabling science in Barrow. A letter from UIC Corporate was sent to funded researchers to notify of the change. If anyone has questions, please contact UMIAQ's general manager Richard Reich.
- 2012 and on: UMIAQ continues to work with CPS for NSF-funded projects and have started to support non-NSF projects (BROMEX, DoE, etc.)

RESULTS

- Great feedback from the supported researchers in 2011 and since January 2012
- Teamwork still paying off and lots more opportunities for continued excellent service in the future
- Barrow Bulletin with all latest policies, procedures and information
- CPS Barrow logistical stop over document is being updated and will soon be available via www.icefloe.net

Thank you

Questions?

