

Oil and Gas Activities in the U.S. Arctic OCS

Dee Williams, PhD

Chief, Environmental Sciences Management

March 2012



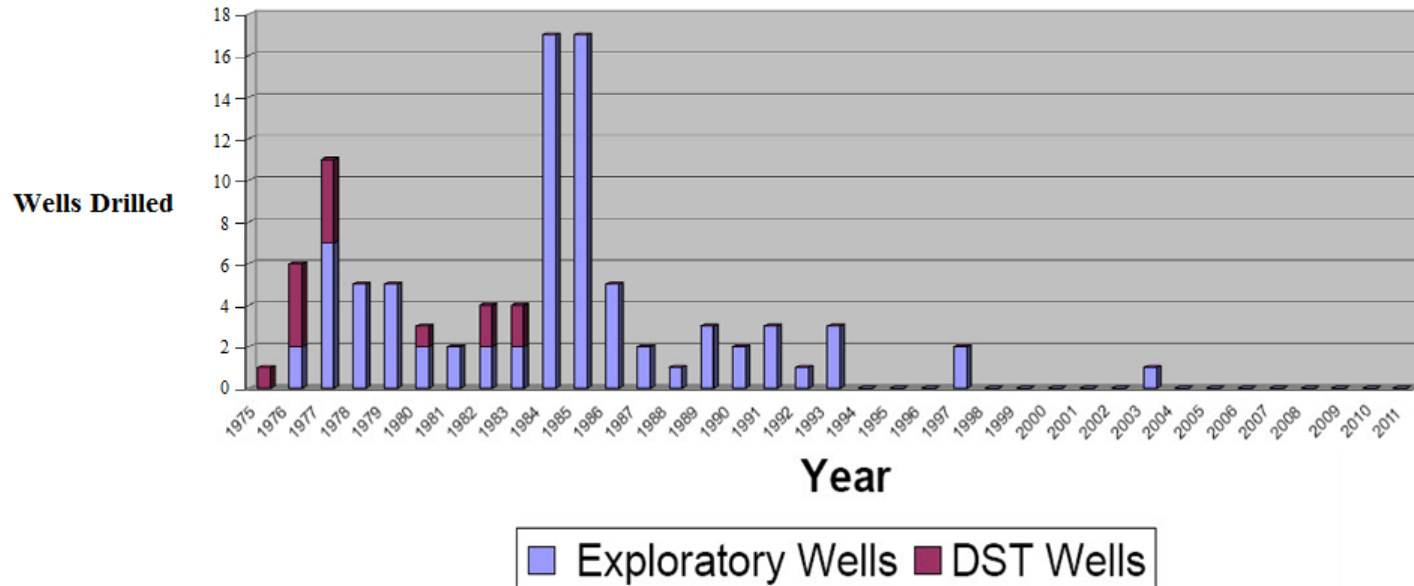
Historic Exploration Drilling

There have been 84 exploration wells and 14 DST wells drilled in Alaska.

Beaufort Sea -	30	St. George Basin -	10
Chukchi Sea -	5	Cook Inlet -	13
Norton Sound -	6	Gulf of Alaska -	12
Navarin Basin -	8		

The last exploration well on the Alaska OCS was completed in January 2003, in the Beaufort Sea.

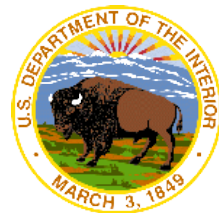
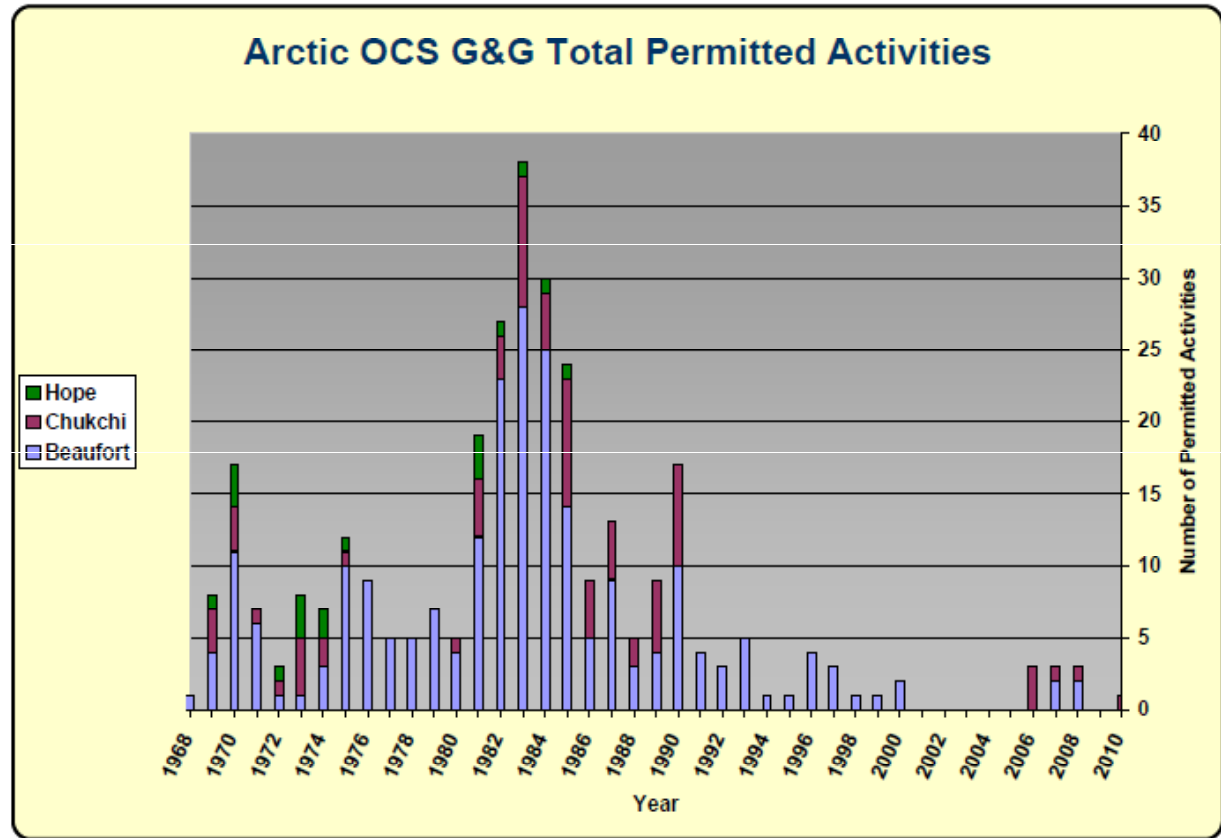
The chart graphs number of exploration wells by year from 1975 through 2011.



Alaska OCS Exploration Wells 1975 -2011



- Activities peaked in early 1980s
- 15 Arctic permits since 1998
- One pending over-ice permit
- Bering Sea seismic surveys virtually ended 20 years ago

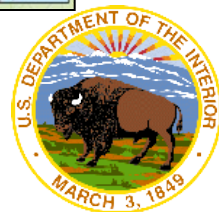
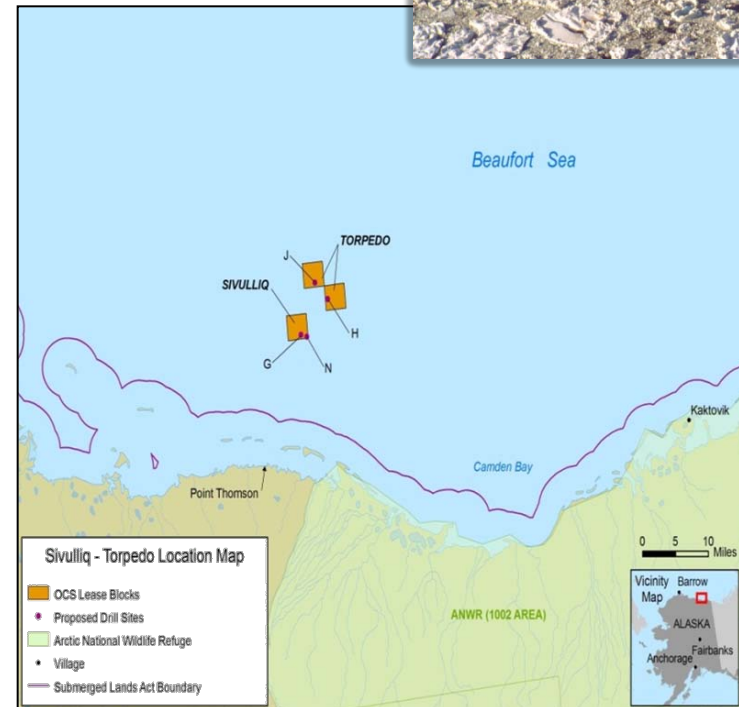


Alaska OCS Leases



Camden Bay - Shell Offshore Inc.

- Four exploration wells planned using the conical drilling unit (CDU) *Kulluk*
 - 2 wells to test the Sivulliq prospect
 - 2 wells to test the Torpedo prospect
- Drill sites located ~ 16-23 miles north of Point Thomson, near Camden Bay.
- Water depths ~ 110-125 feet.
- BOEM approved, with conditions, Shell's Exploration Plan on Aug. 4, 2011.

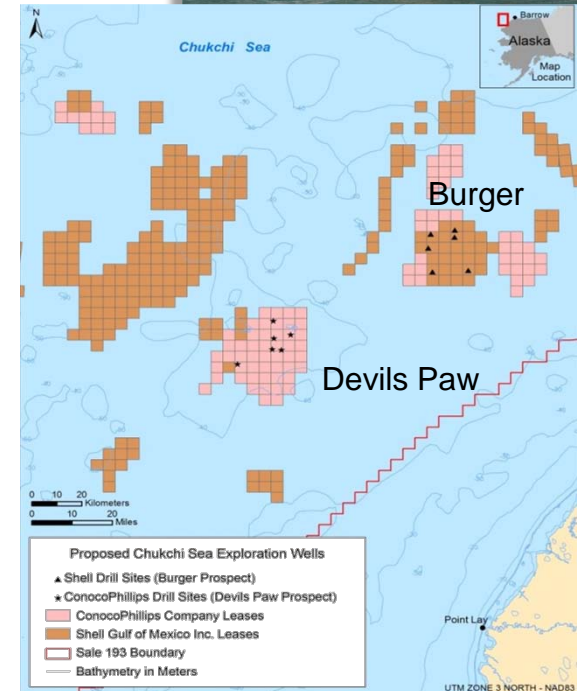


Burger Prospect - Shell Gulf of Mexico

- Multi-year program
- Up to six exploration wells planned using the drillship *Discoverer*.
- Drill sites located ~ 78 miles northwest of Wainwright.
- Water depths ~ 140-150 feet.
- BOEM approved, with conditions, Shell’s Exploration Plan on Dec. 16, 2011.

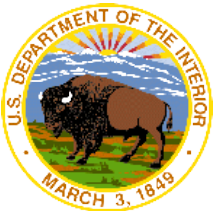
Devils Paw Prospect – ConocoPhillips

- Multi-year program
- Up to six exploration wells planned using a jack-up rig.
- Drill sites ~ 120 miles west of Wainwright.
- Water depths ~ 140 feet.
- Under BOEM review; draft application received March 1, 2012.
- First Exploration Plan subject to BOEM’s new Air Quality authority in the Chukchi and Beaufort Seas .

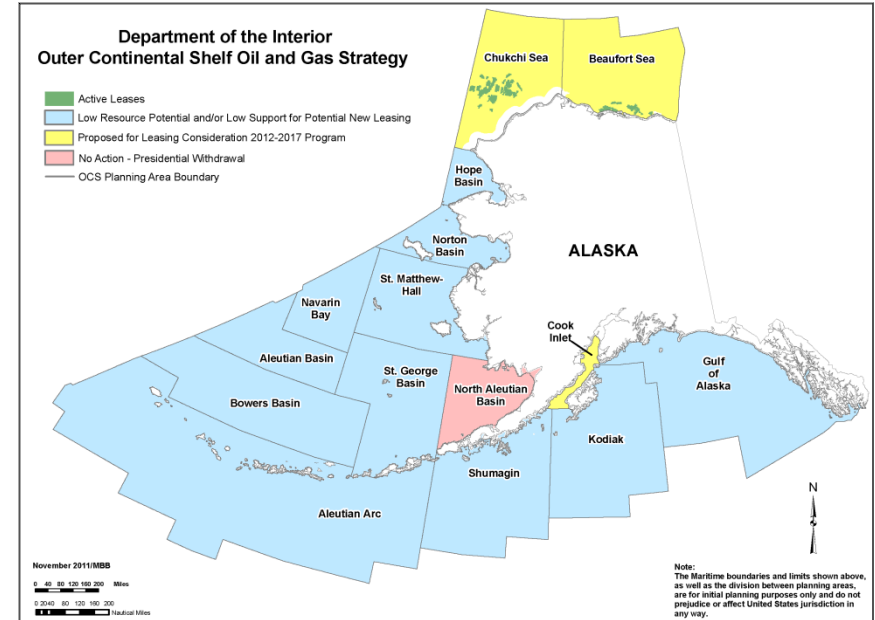
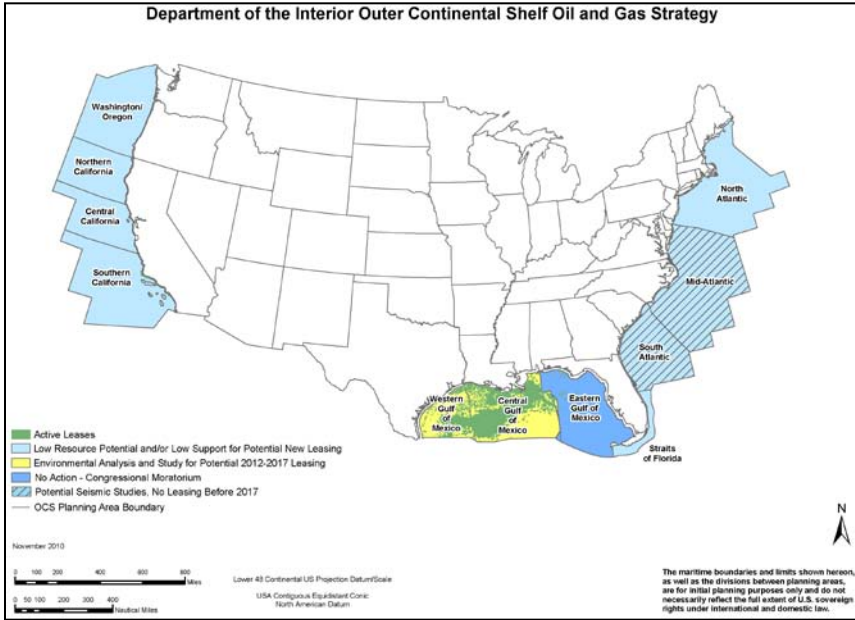


Five-Year Outer Continental Shelf (OCS)
Oil and Gas Leasing Program
2012-2017

DRAFT
Programmatic Environmental Impact
Statement
(PEIS)



2012-2017 OCS Oil and Gas Program Proposed Sales

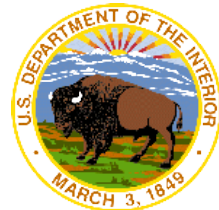


Gulf of Mexico: Twelve Sales
 Five annual sales in Central Gulf
 Five annual sales in Western Gulf
 Two sales in small area of Eastern Gulf

Offshore Alaska: Up to Three Sales
 One sale in Beaufort Sea
 One sale in Chukchi Sea
 One special interest sale in Cook Inlet



2012-2017 OCS Proposed Program Alaskan Arctic Program Area





Kulluk

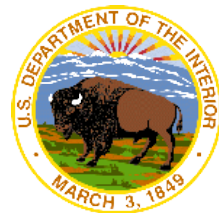
- Exploration: 2012, 2013 and 2014
- Decision on the 2012–2017 5-Year OCS Oil and Gas Leasing Program
- Programmatic EIS for the Effects of Oil and Gas Activities in the Arctic Ocean



Discoverer



Environmental Studies Program in Alaska





Environmental Stewardship

- [▶ Coastal Marine Spatial Planning](#)
- [▶ Environmental Assessment](#)
- [▶ Environmental Studies](#)
- [▶ Non-Energy Minerals](#)

[Home](#) | [Environmental Stewardship](#)

Environmental Studies - Alaska Region

NOTICE: Alaska's BOEM Region is in the process of migrating content from its old website to this new site. If you do not find what you are looking for below, the content may not yet have been migrated. [Click here](#) to check the old site.

The Alaska Environmental Studies Program was initiated by the U.S. Department of the Interior in 1974 in response to the Federal Government's decision to propose areas of Alaska for offshore gas and oil development. The Outer Continental Shelf Lands Act requires the Secretary of the Interior to conduct environmental studies to obtain information pertinent to sound leasing decisions as well as to monitor the human, marine and coastal environments.

Alaska Annual Studies Plan

The Plan contains brief profiles of ongoing and proposed studies. The Plan also describes background, strategic overview, projected Outer Continental Shelf activities, examples of affected decisions, information sorted by discipline, and information needs.

[2012 Alaska Studies Plan](#)
[Previous Years' Studies Plans](#)

Alaska Region Ongoing Studies

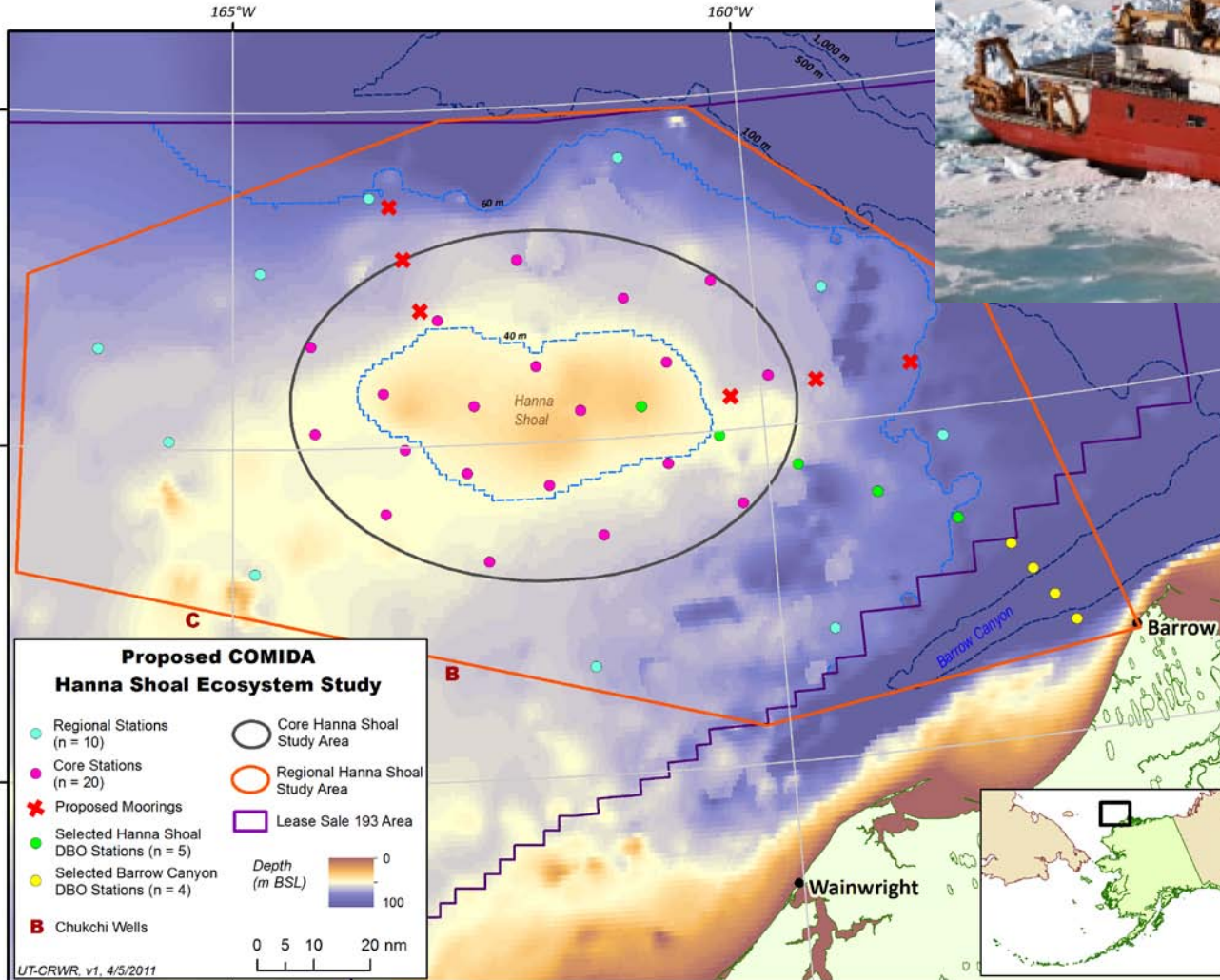
OCTOBER 2011. This table, updated quarterly, contains links to all studies that the Alaska Region's Environmental Studies Program is currently undertaking, and those that are in the planning stages. Studies are broken down into seven categories: Physical Oceanography, Fates and Effects, Habitat and Ecology, Marine Mammals and Protected Species, Social Systems, Information Management, and Integrated Studies.

Environmental Studies Program Information System (ESPIS)

ESPIS is a searchable database of all completed Environmental Studies Program reports. It includes technical summaries of more than 700 BOEM-sponsored environmental research projects, and more than 2,000 full research reports. The information is grouped geographically by BOEM region -- Gulf of Mexico, Atlantic, Pacific, or Alaska. A "national" study is research that pertains to more than one geographic region (for example, the effects of wind on oil spill spreading).



BOEM Hanna Shoal Ecosystem Study



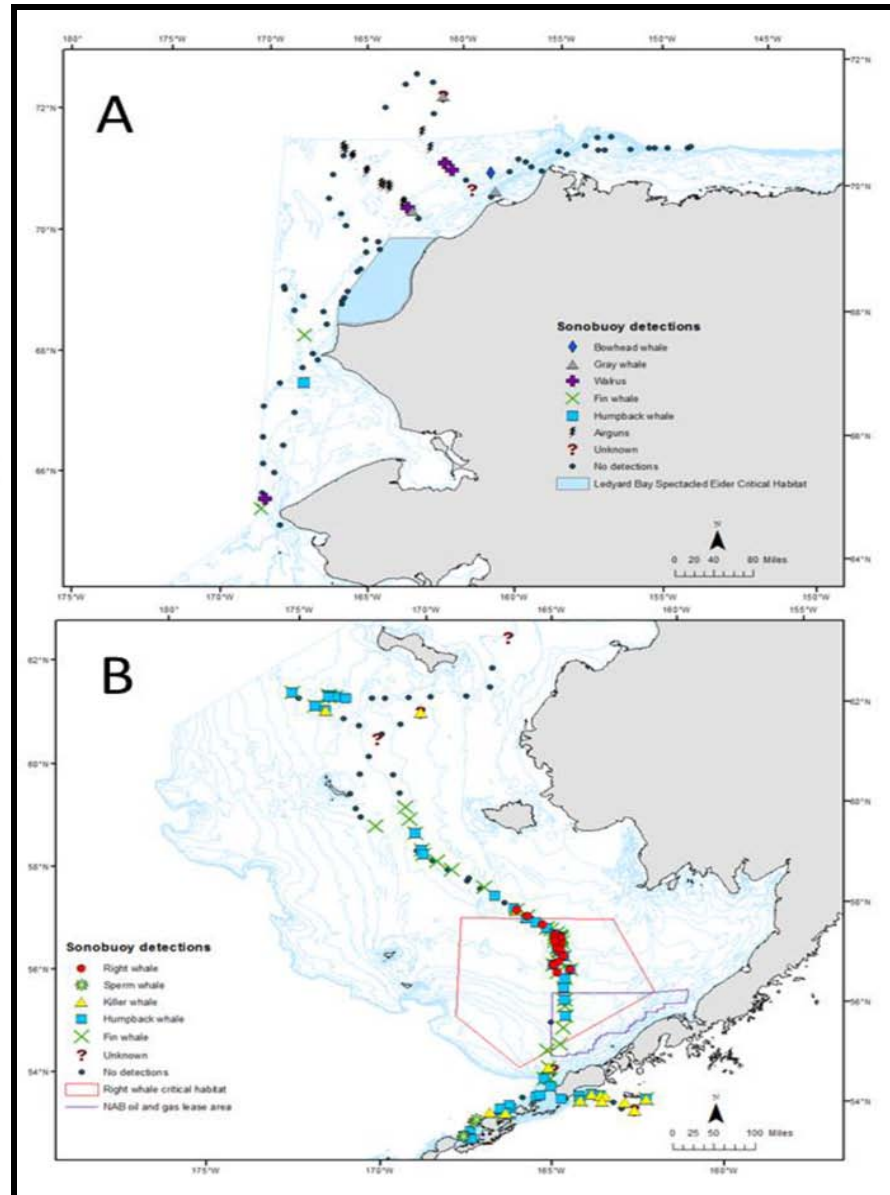
Total Cost: \$5,645,000

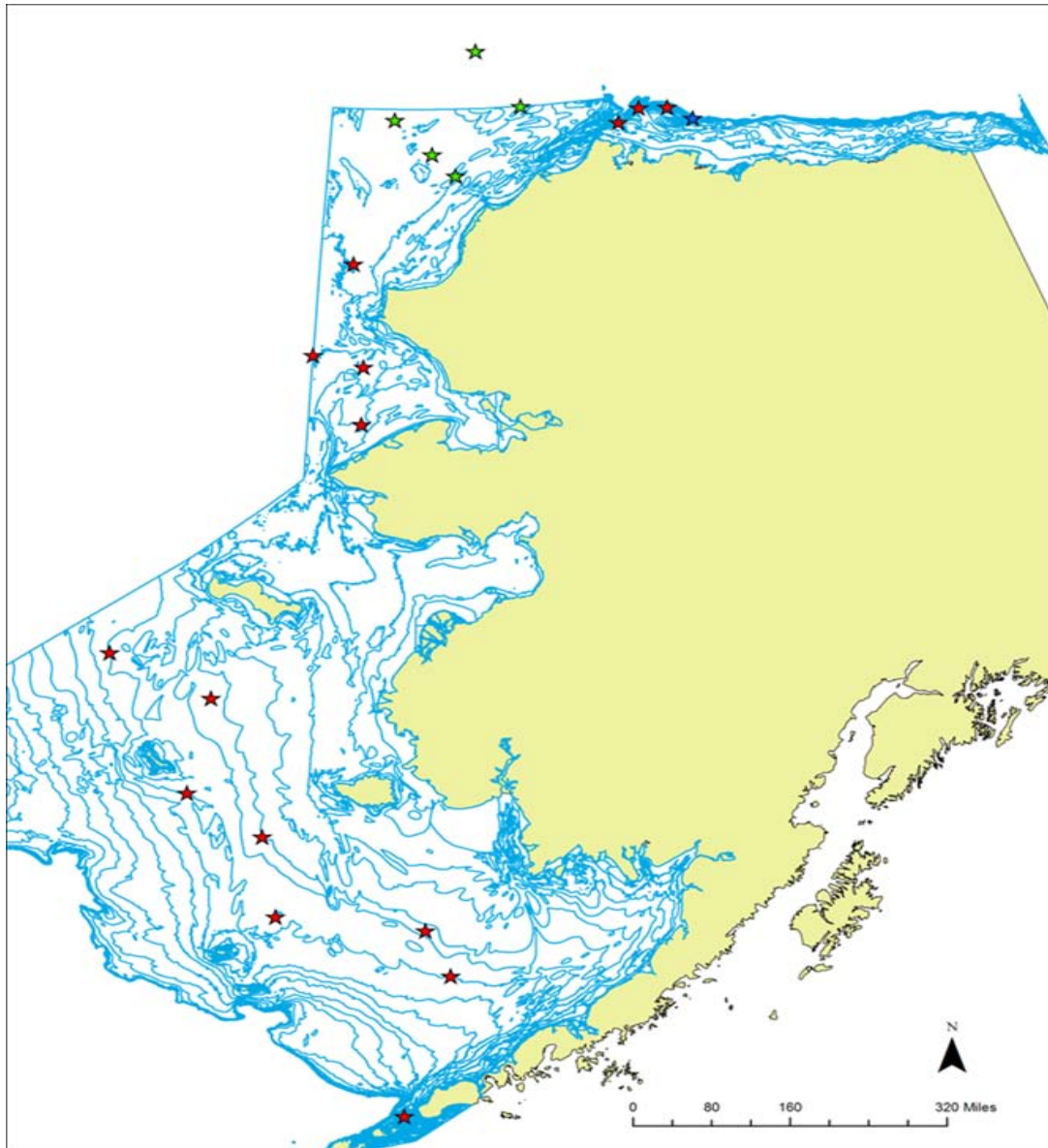
Period of Performance: FY 2011-2016

Conducting Organization: University of Texas at Austin



**2011 Sonobuoy deployment and acoustic detection in:
A). Chukchi Sea (8/18–9/03)
B). Bering Sea (8/12–9/11)**



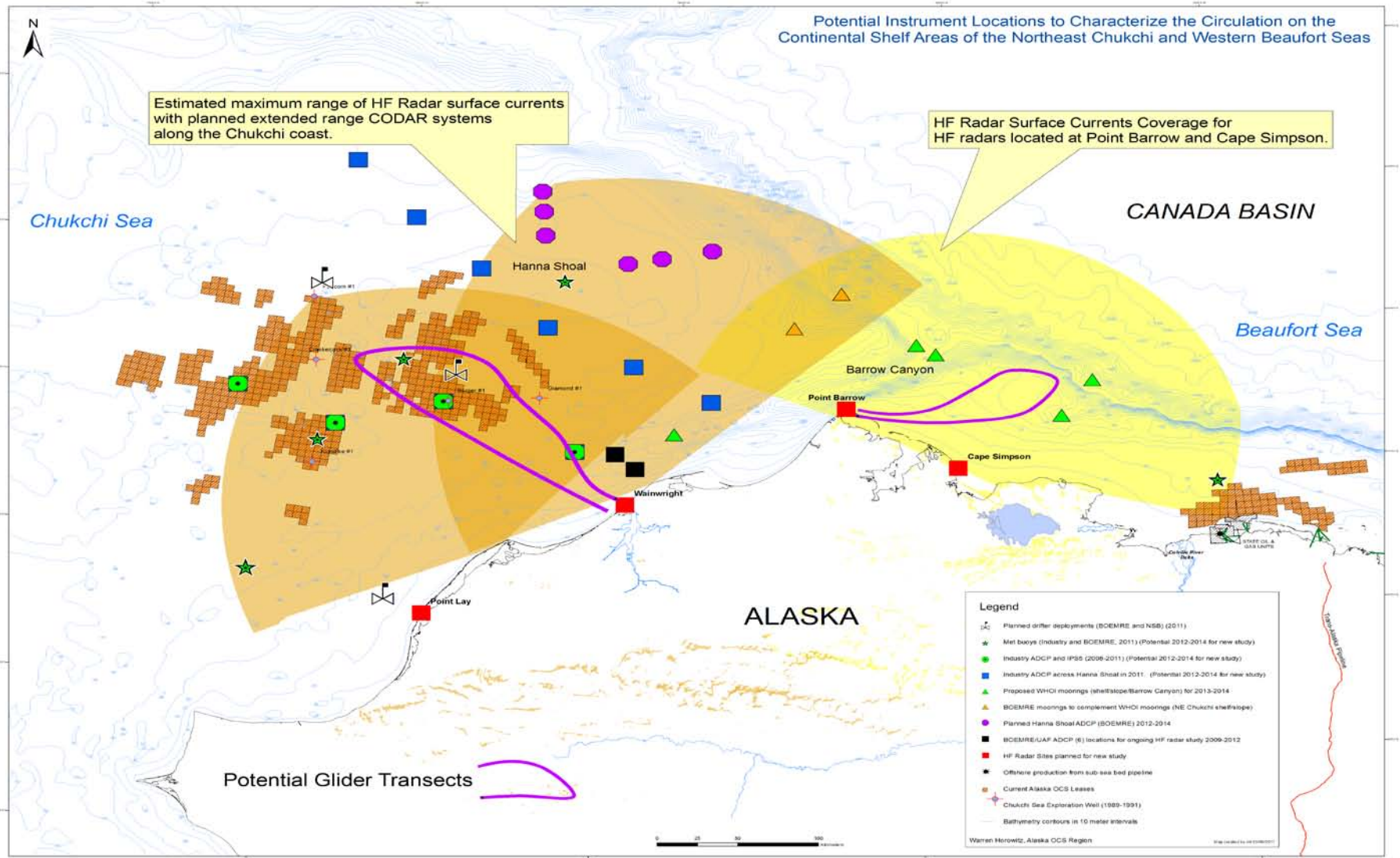


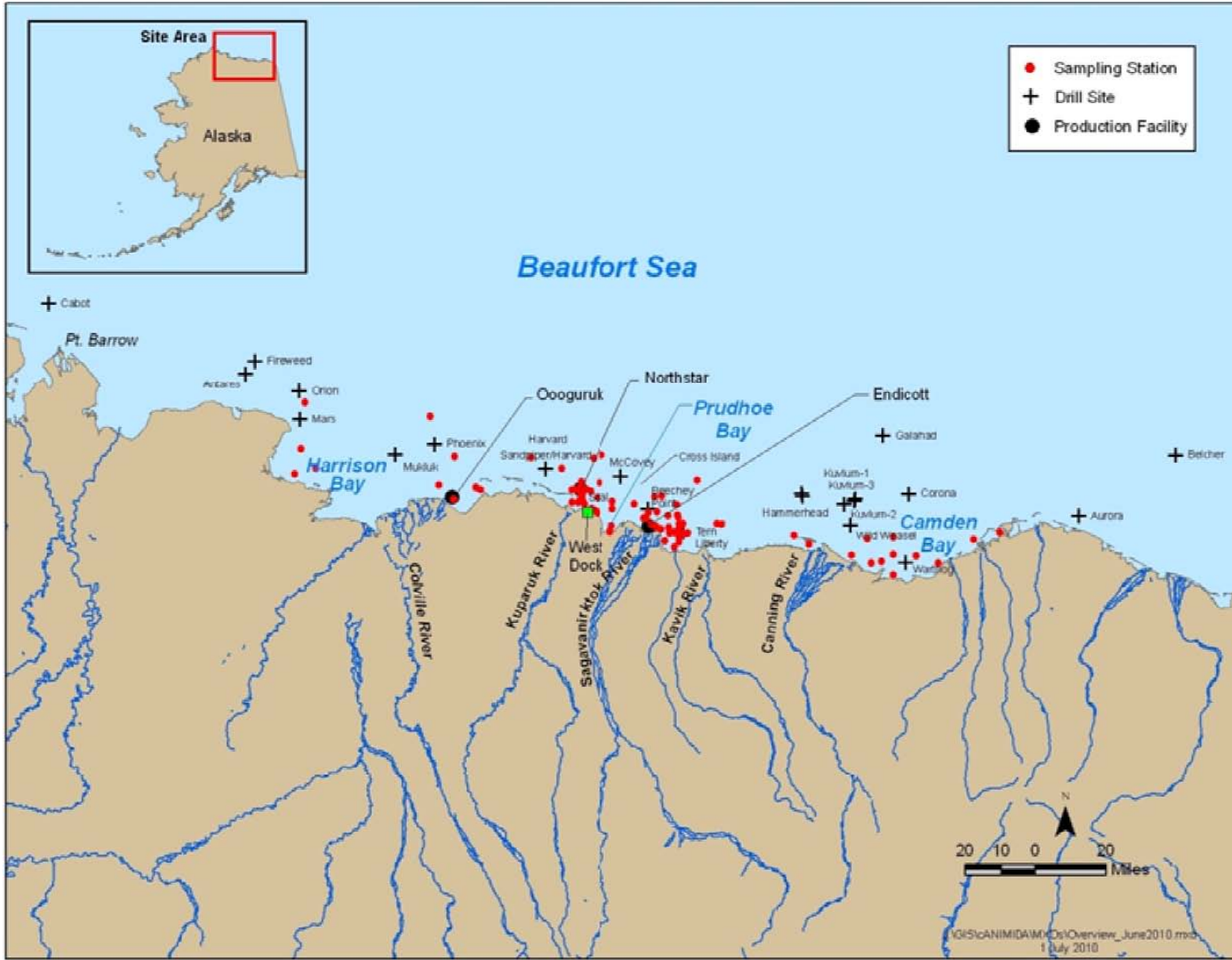
Proposed passive acoustic recorder mooring locations. Red-ARCWEST moorings; Green-CHAOZ moorings; Blue-APL/UW mooring.

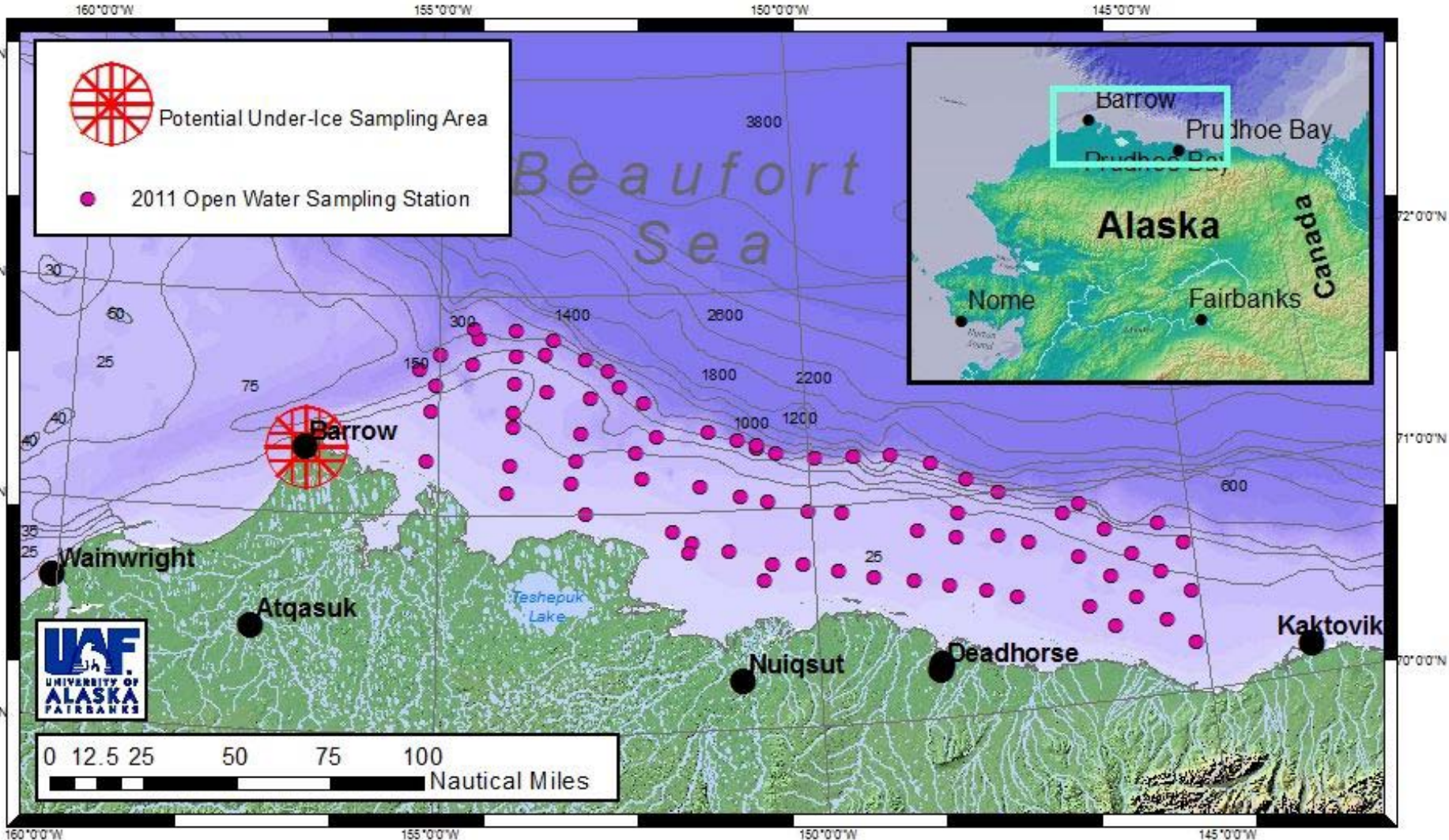
Applied Physics Laboratory – University of Washington



Proposed Instrument Locations of Gliders and Moorings for High Frequency Radar Project: AK-12-03







Questions?

<http://www.boem.gov/Akstudies>

