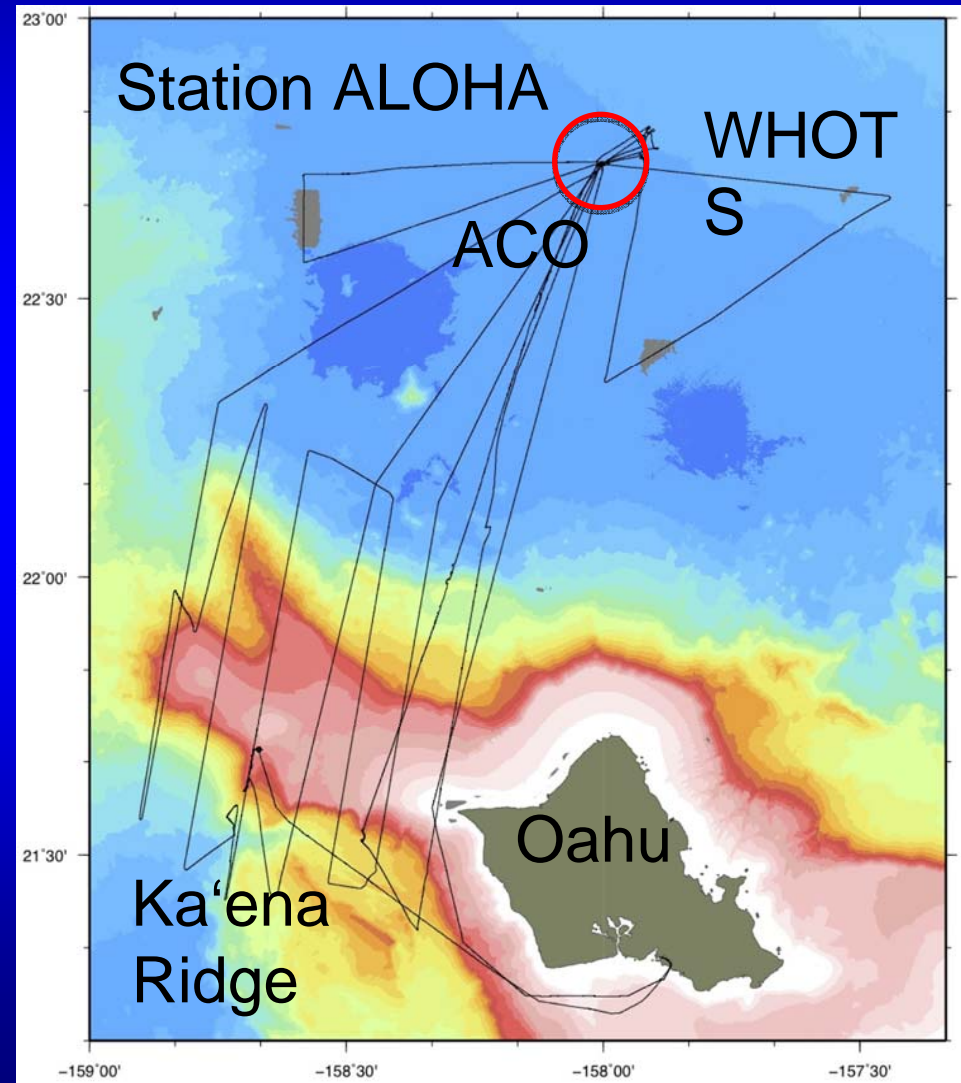


ALOHA Cabled Observatory and Ka'ena Ridge – 20 May – 7 June 2011

Bruce M. Howe
John Sinton

*School of Ocean and Earth
Science and Technology
University of Hawai'i at Manoa*

DESSC Meeting, San
Francisco
4 December 2011



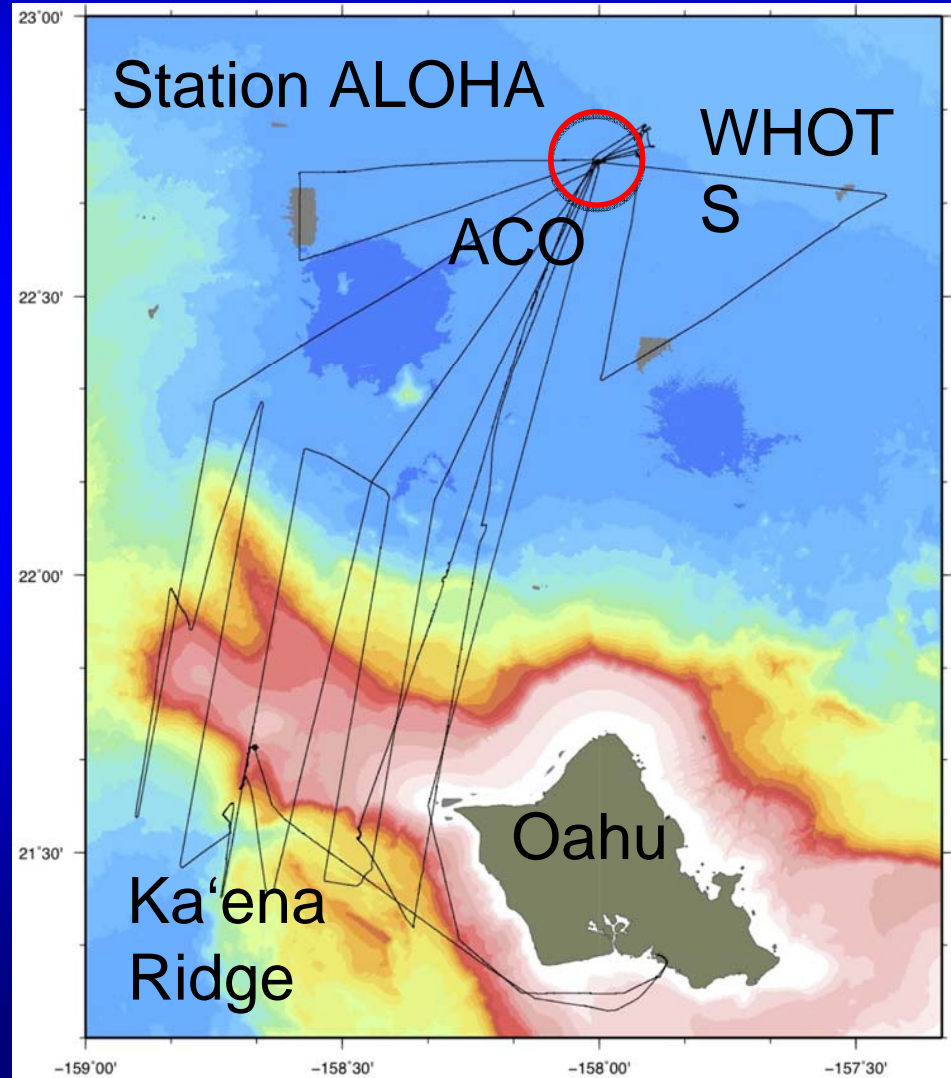
ACO and Ka'ena Ridge

20 May – 7 June 2011

- R/V Kilo Moana – KM1116
- Jason – dives J2-551-564 – Matt Heintz
- 4 days Ka'ena Ridge
- 14 days ACO

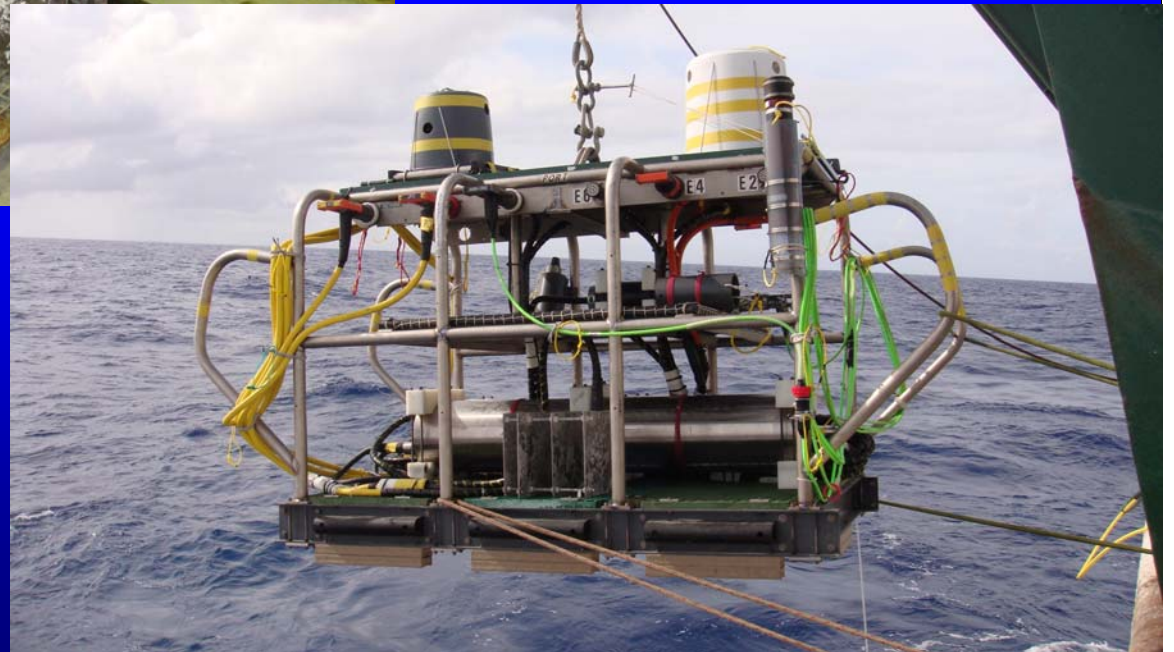
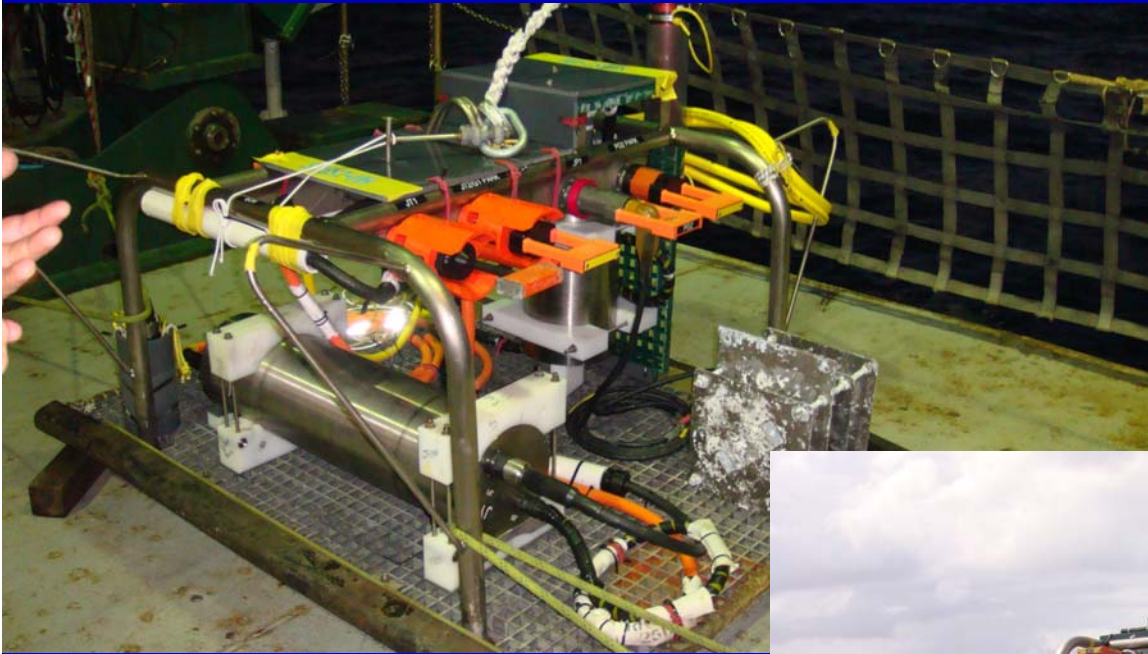
Geological Investigations of Ka'ena Ridge

- J. Sinton, D. Pyle, J. Mahoney, M. Tardona
- 4 new Jason2 Dives
 - 18.4 km of ROV track
 - 53 samples
- See: Tardona et al., AGU V41A-2477



ALOHA Cabled Observatory

JBOX, OBS

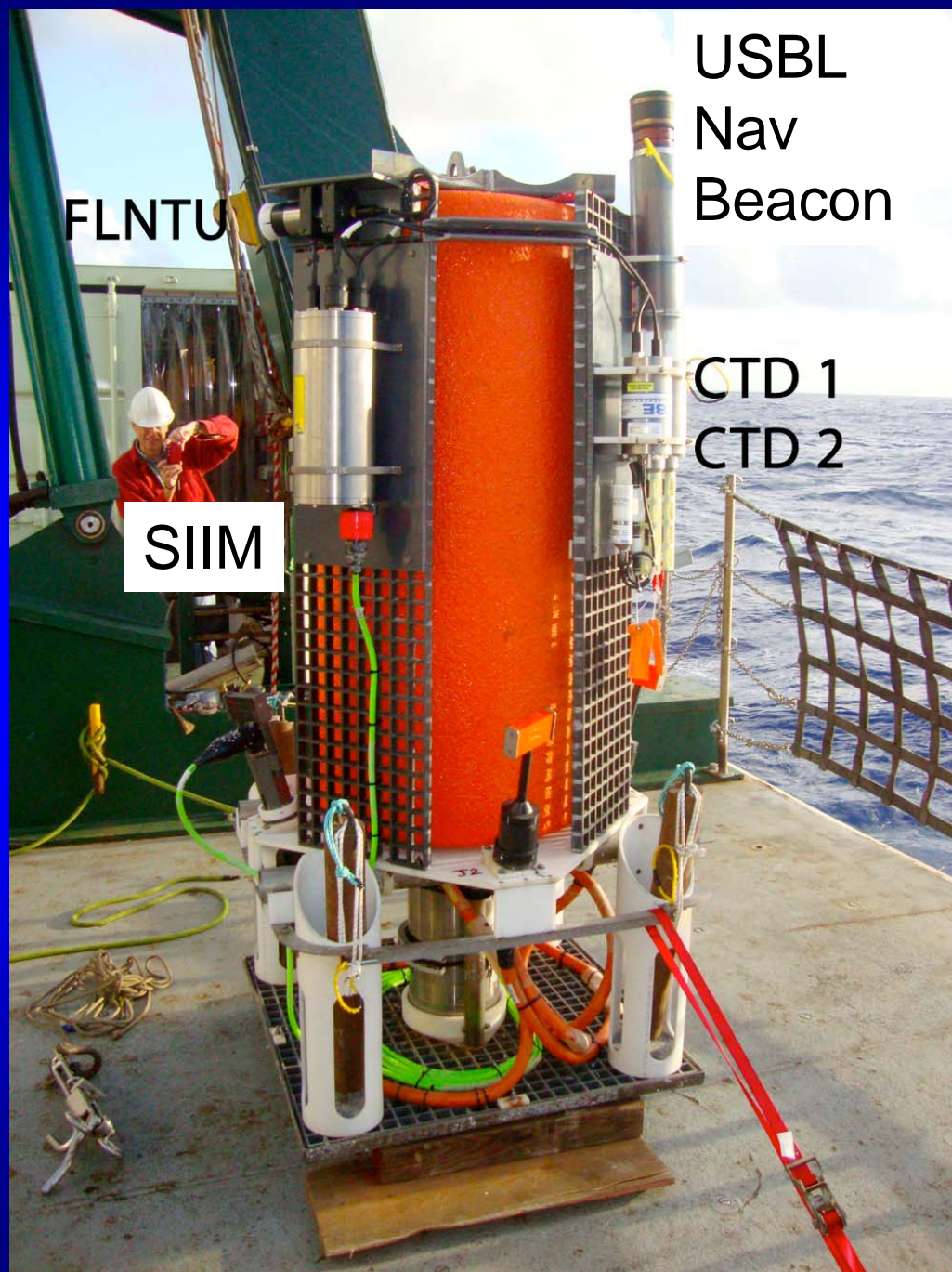


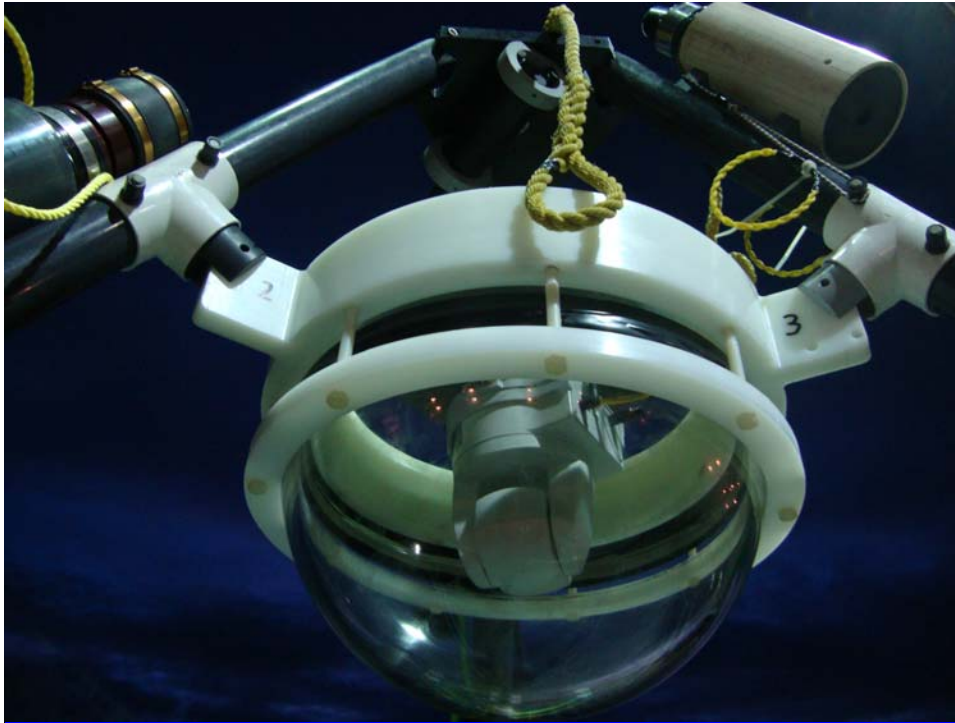
AMM Secondary Node and Sensors

1 port – 4 ports

100 lb negative

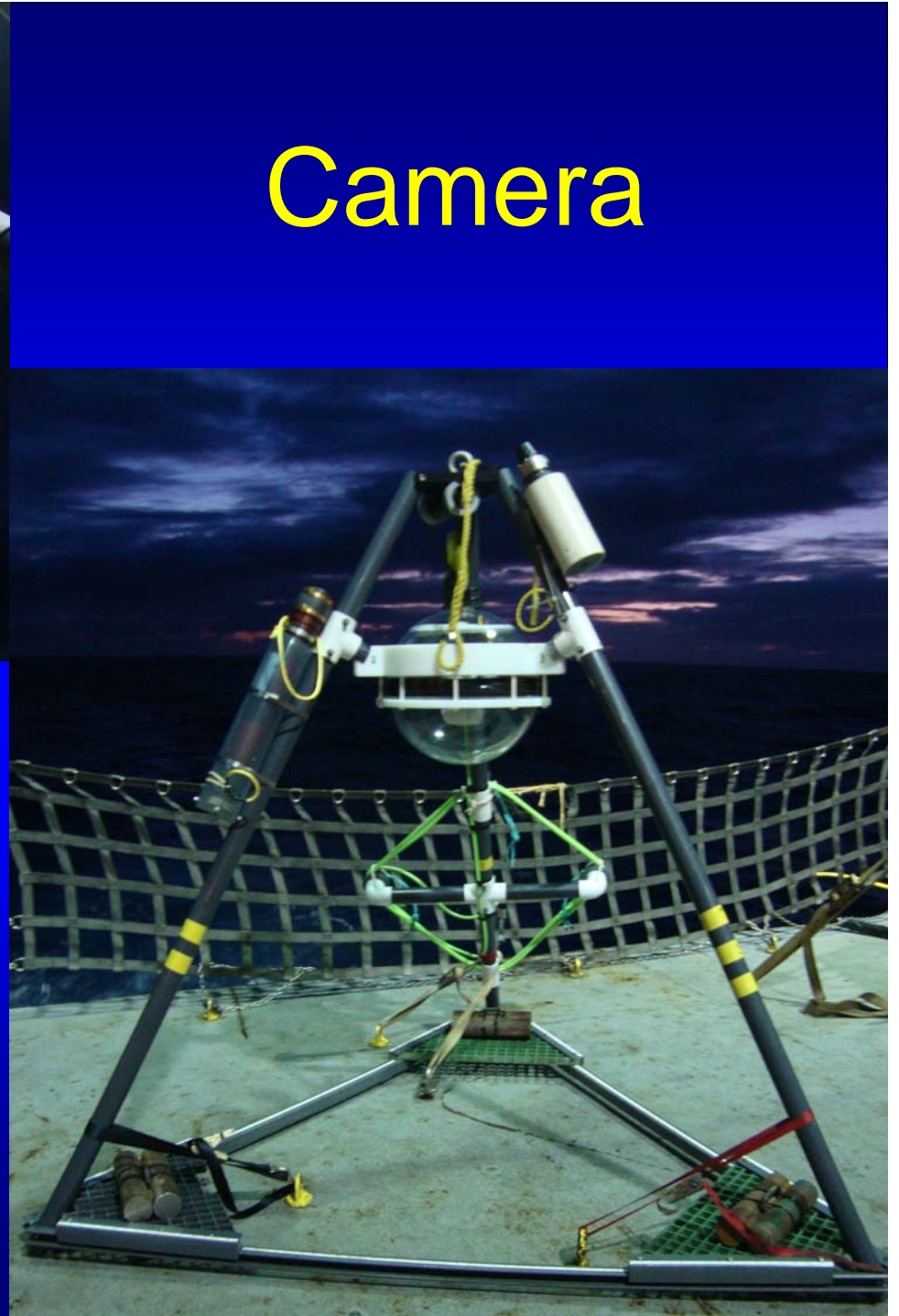
From APL-UW

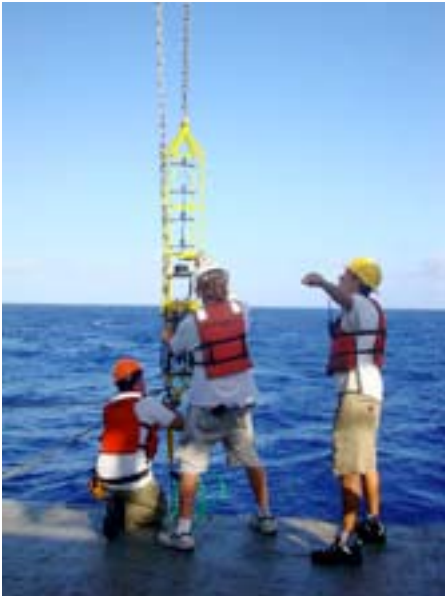




Camera

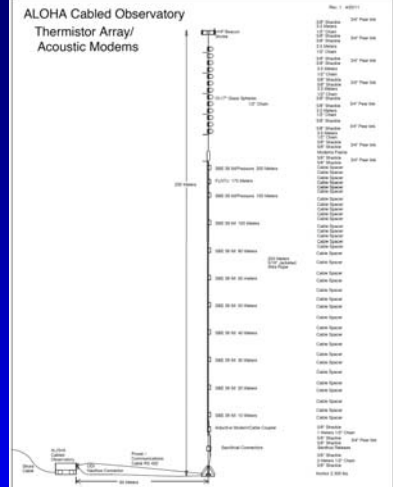
- Axis 216-PZT
- Internet surveillance
- 2 LED lights
- Hydrophone



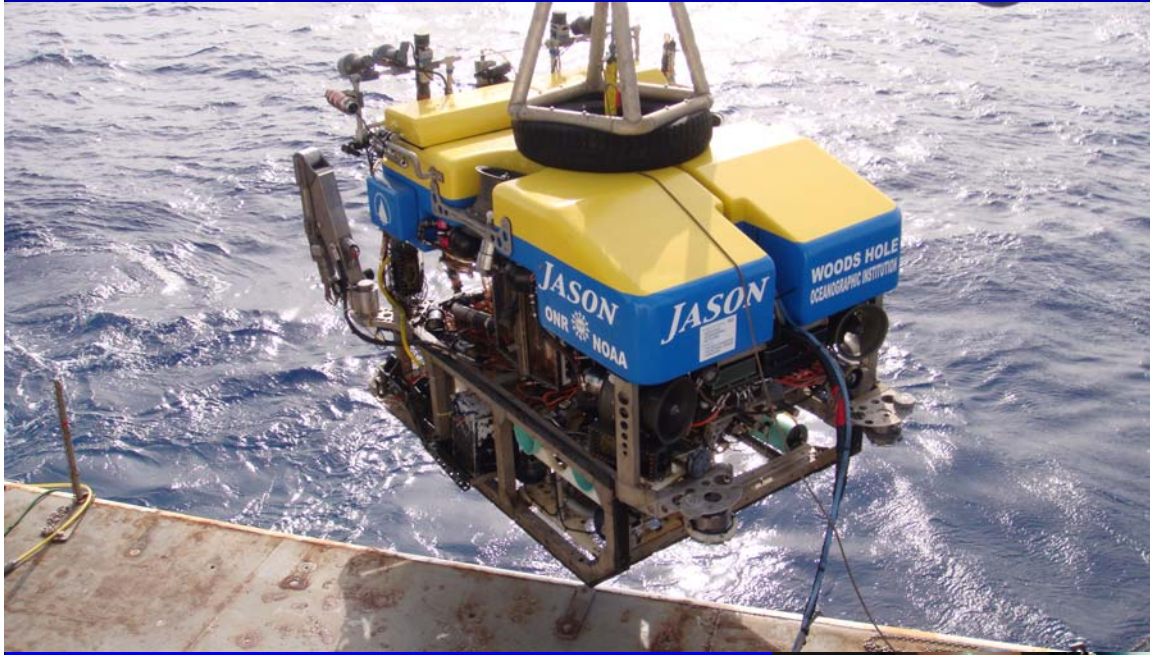


TAAM Mooring

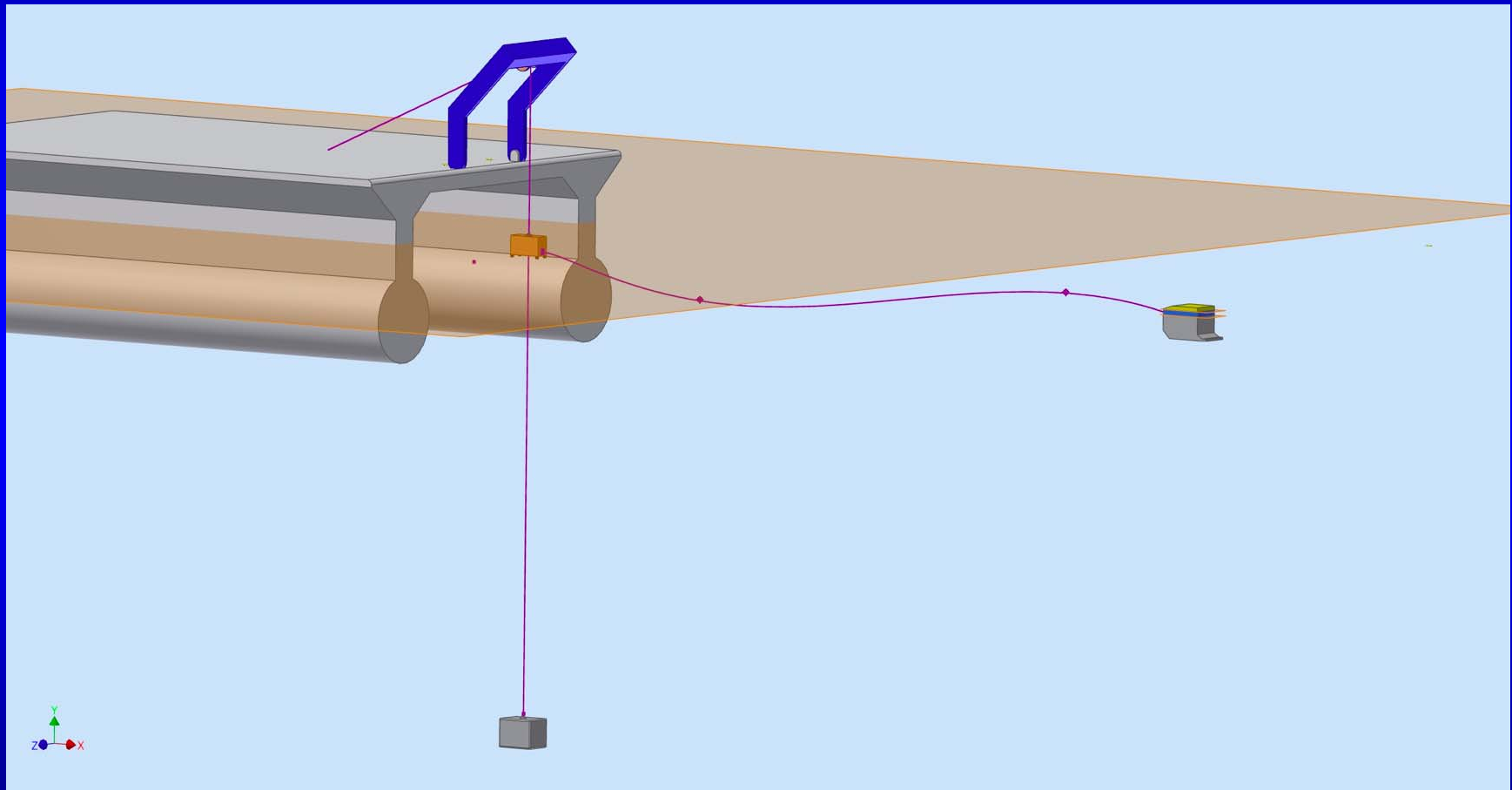
- 10 thermistors,
- 1 fluorometer,
- Acoustic modem



Jason – sine qua non



Package + Medea + Jason



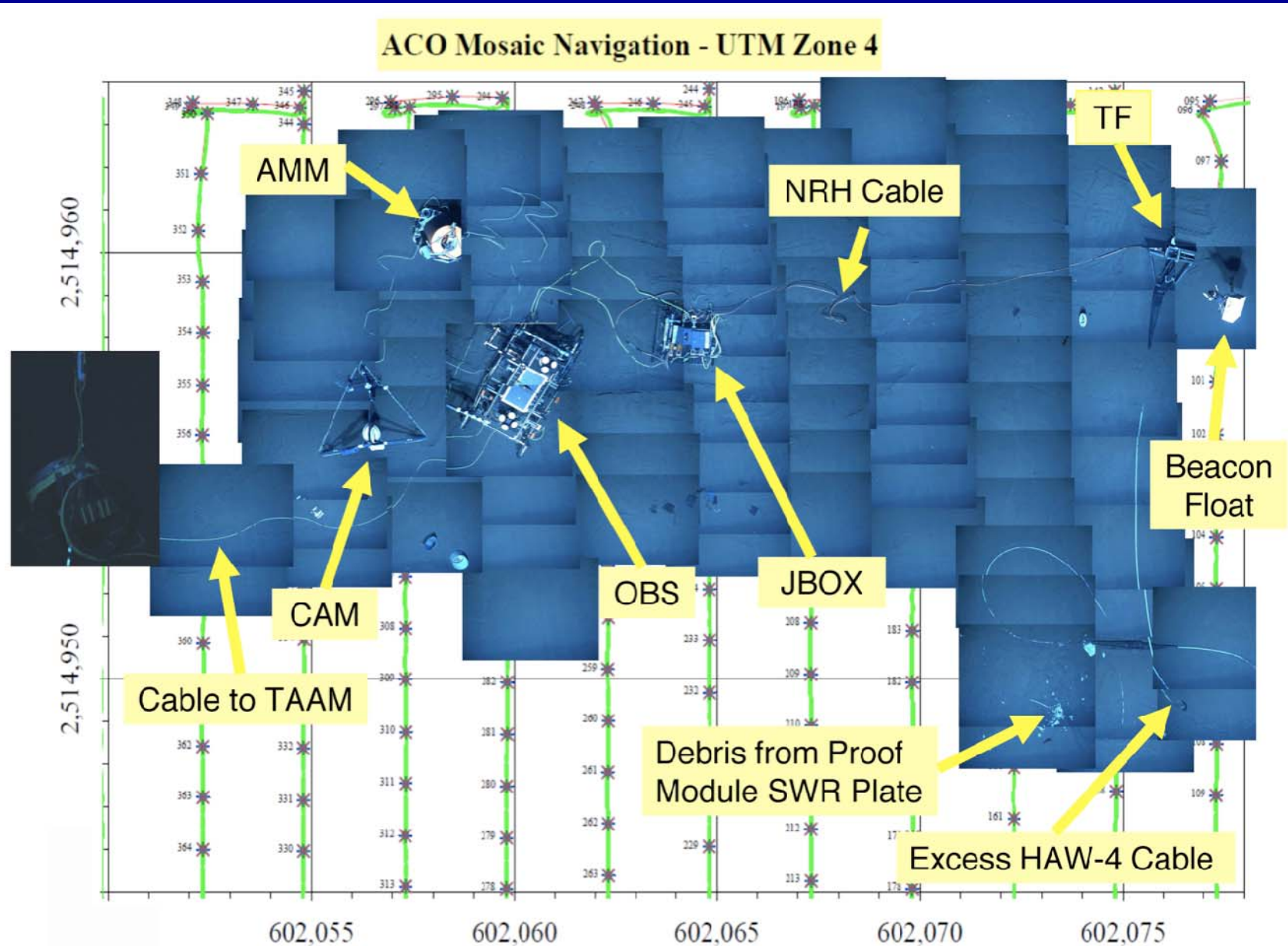
Lowering the JBOX



Making a connection



Mosaic of bottom components



Bottom configuration – June 2011

Cable Termination

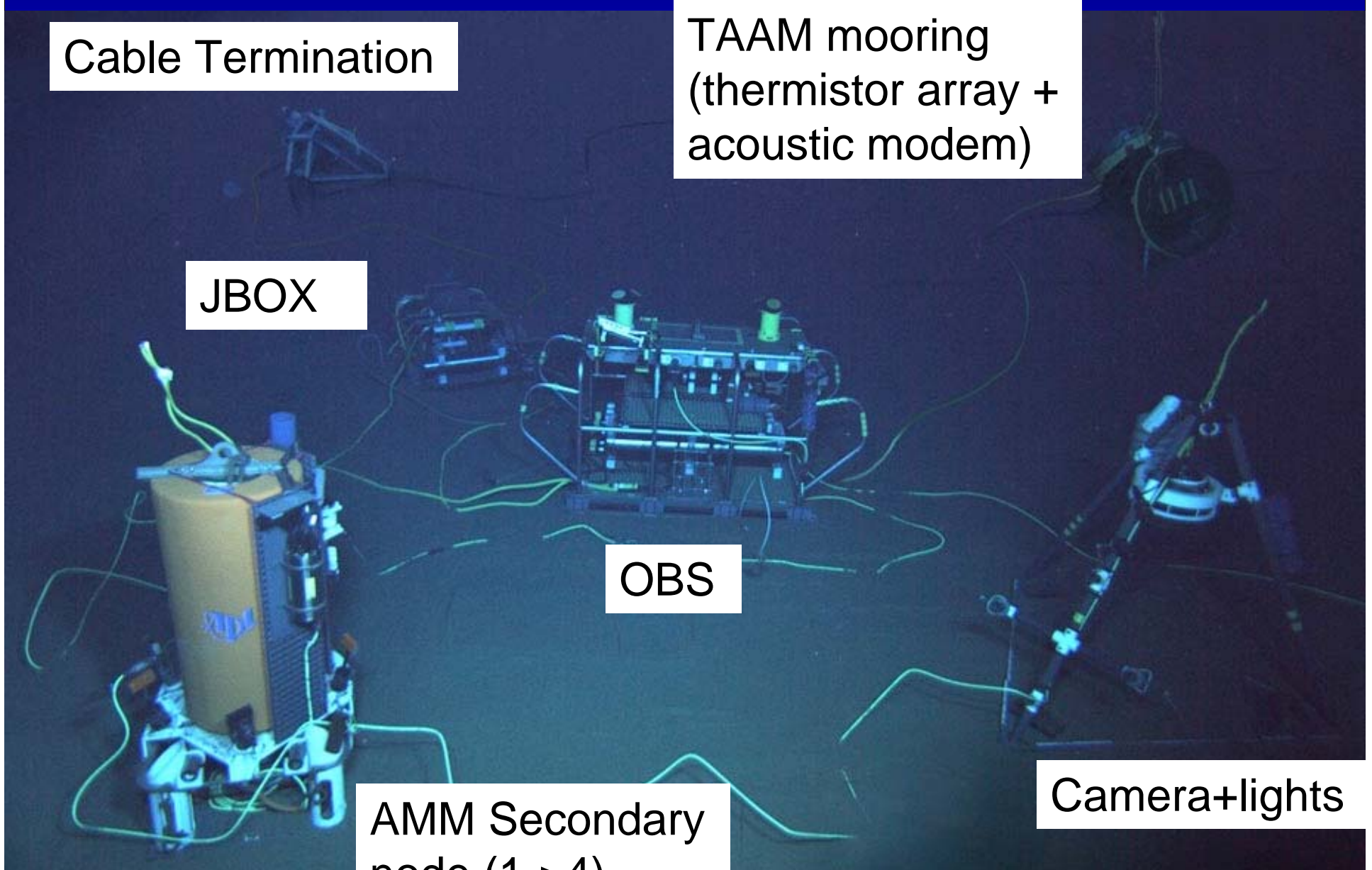
TAAM mooring
(thermistor array +
acoustic modem)

JBOX

OBS

AMM Secondary
node (1 of 4)

Camera+lights



KM1116 Cruise Participants



ACO - First video from camera

