

NOAA Office of Ocean Exploration and Research

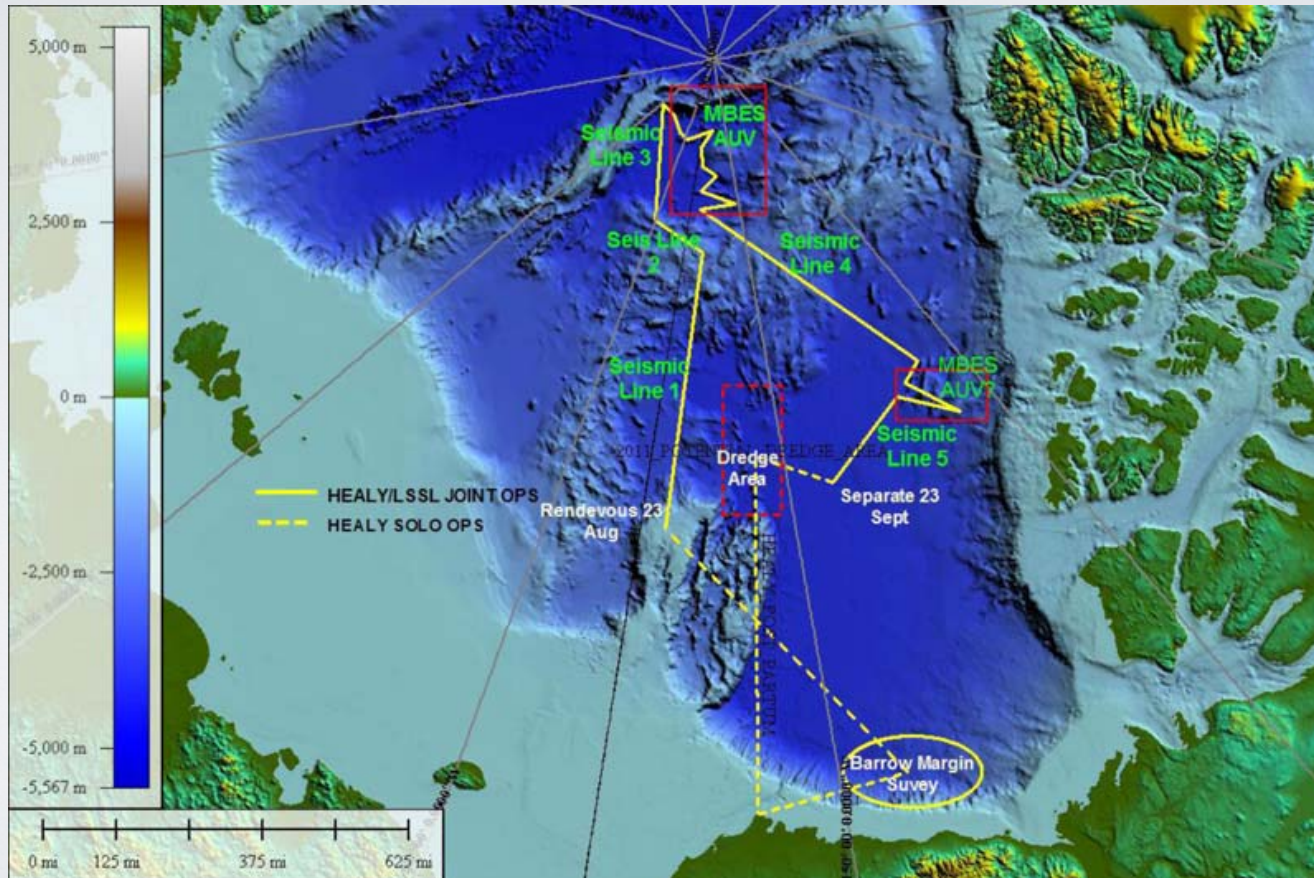
Craig W. Russell, Program Manager, *Okeanos Explorer* Program



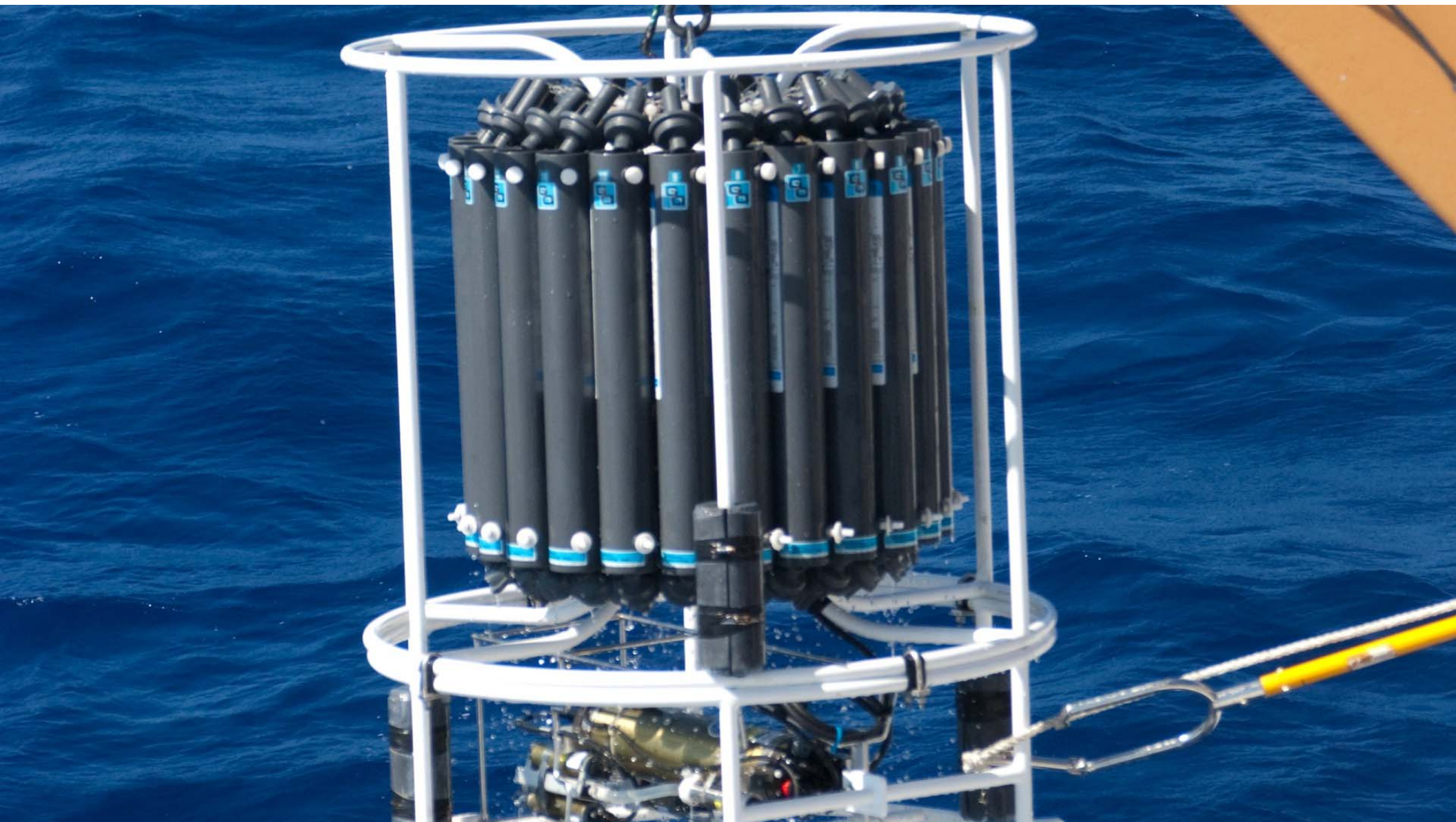
**New Director for Ocean Exploration and
Research**

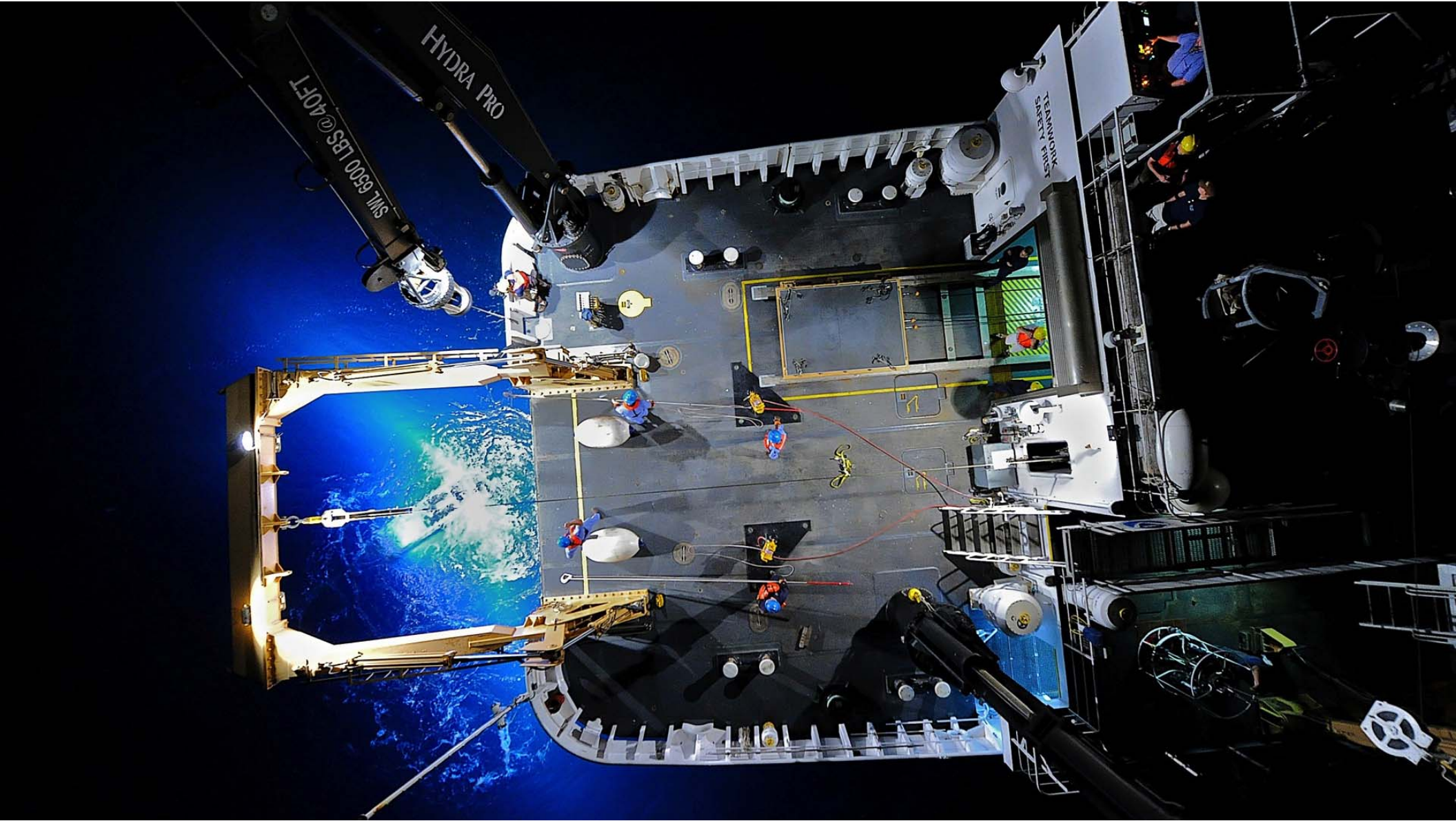
**Tim Arcano, Ph.D., P.E.,
F.ASME**

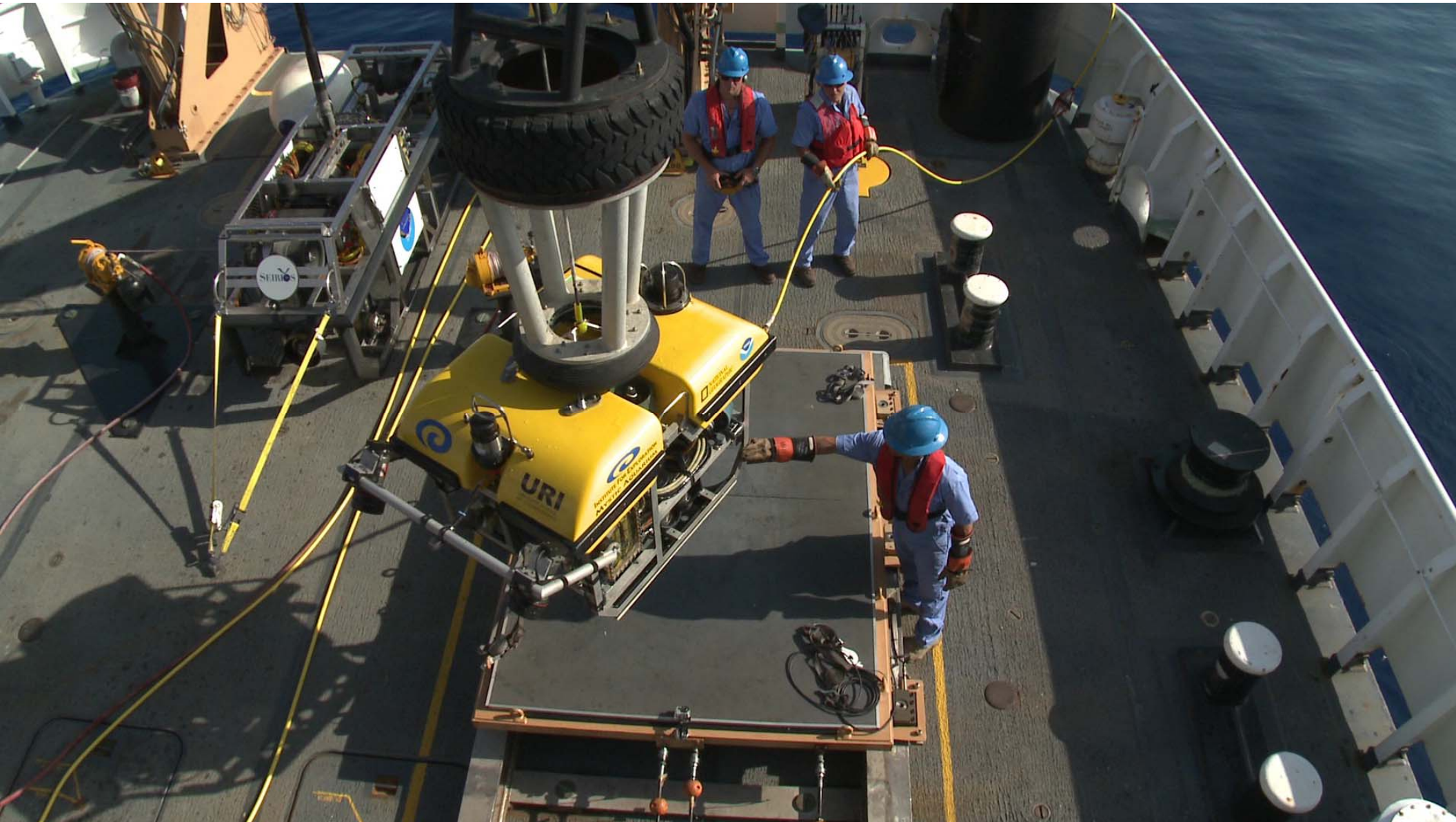
Extended Continental Shelf





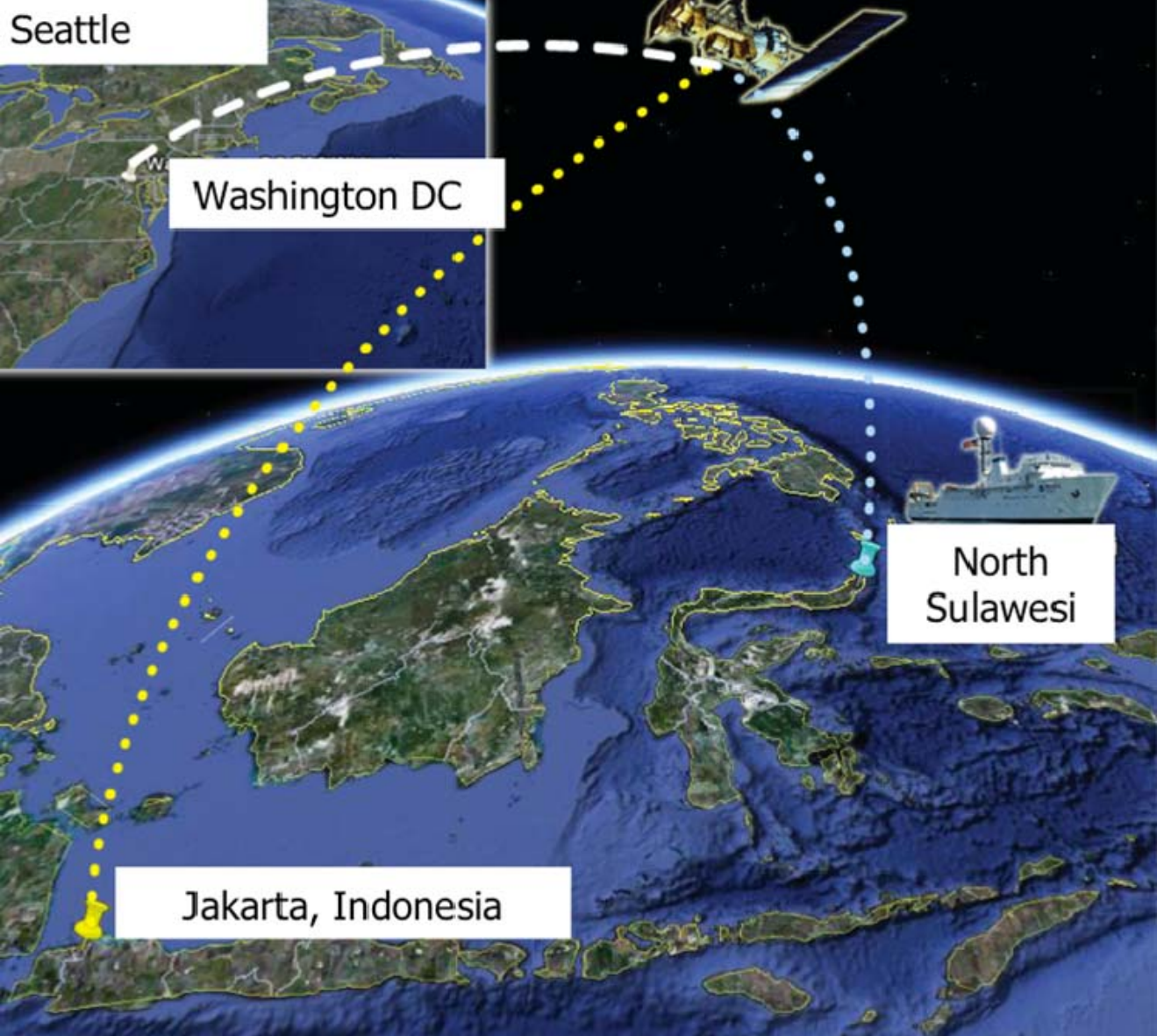












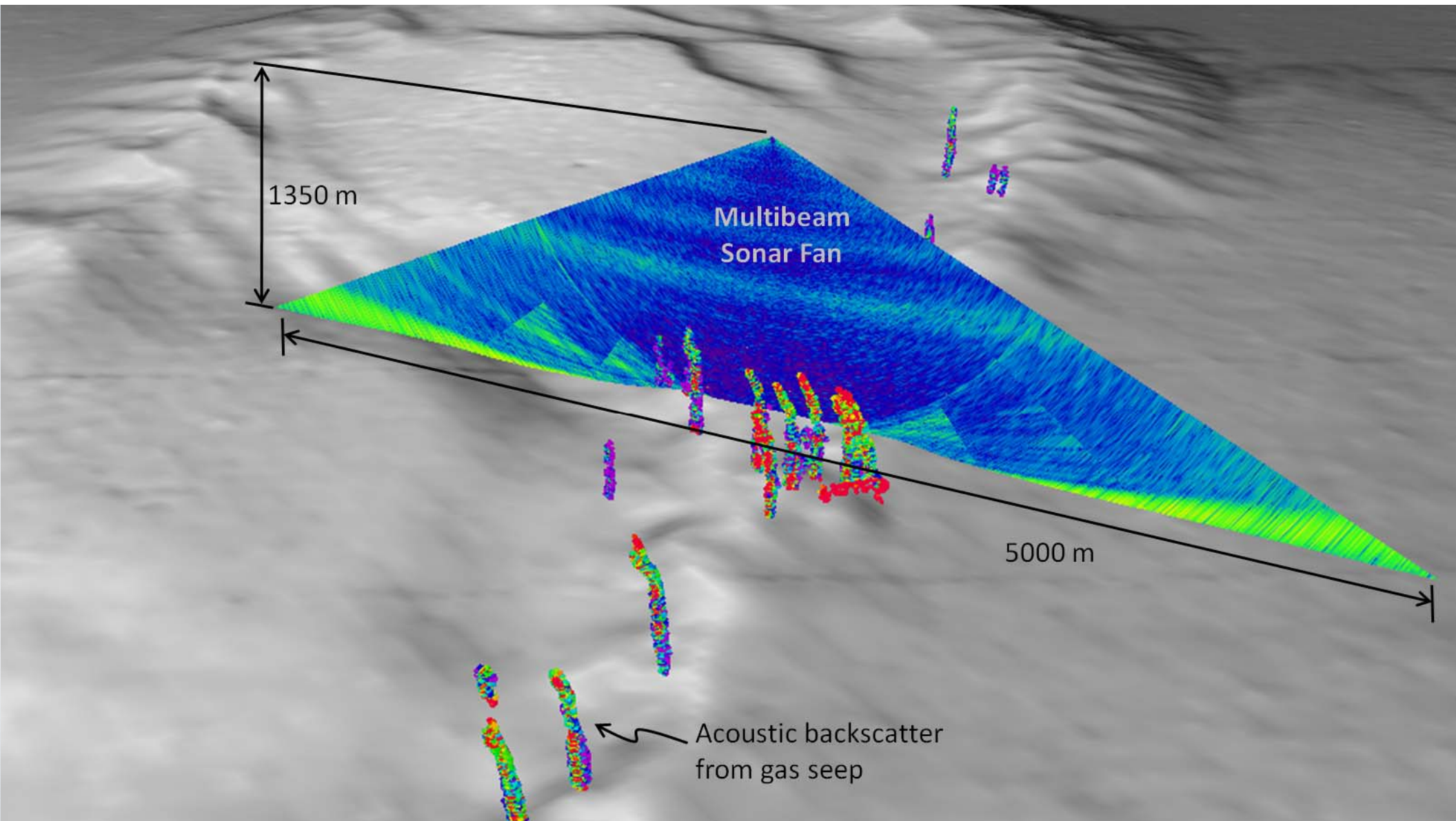
Seattle

Washington DC


North Sulawesi

Jakarta, Indonesia







 eventlog@conference.tethys.gso.uri.edu

Conversation Options Send To

 eventlog@conference.tethys.gso.uri.edu

(7/13/2010 5:52:06 AM) santiagoherrera: ASR
(7/13/2010 5:52:09 AM) santiagoherrera: ?
(7/13/2010 5:52:10 AM) jonathanrose: yeah
(7/13/2010 5:52:16 AM) jonathanrose: I think so
(7/13/2010 5:52:16 AM) cherissedupreez: ASR, a cookie star
(7/13/2010 5:52:19 AM) **timothyshank**: seastar
(7/13/2010 5:52:41 AM) santiagoherrera: triplicate
(7/13/2010 5:52:49 AM) santiagoherrera: SPO barrels
(7/13/2010 5:52:55 AM) santiagoherrera2362: 678m depth
(7/13/2010 5:54:17 AM) kristinekosinski: GEFN0005 stop
(7/13/2010 5:54:40 AM) kristinekosinski: GEFN0006 start
(7/13/2010 5:56:02 AM) cherissedupreez: Off bottom!
(7/13/2010 5:56:02 AM) kristinekosinski: GEFN0006 stop
(7/13/2010 5:56:30 AM) jonathanrose: Thanks everyone!
(7/13/2010 5:56:38 AM) cherissedupreez: Thanks everyone! It's been a pleasure. We you tomorrow Jon.
(7/13/2010 5:56:45 AM) cherissedupreez: *See
(7/13/2010 5:56:54 AM) marzamarzuki: nice dive...thanks everyone
(7/13/2010 5:56:57 AM) **timothyshank**: Someone please note the off bottom position- thank you all.
(7/13/2010 5:56:58 AM) jonathanrose: great have a safe trip
(7/13/2010 5:57:29 AM) santiagoherrera: end of dive and Leg II
(7/13/2010 5:57:47 AM) jonathanrose: Off bottom 2d50.77'N, 125d03.3324'E
(7/13/2010 5:57:57 AM) **timothyshank**: Bless you!
(7/13/2010 5:58:37 AM) **oceanosexplorer**: Commence to move up to surface. The EX time is 13:55
(7/13/2010 6:00:46 AM) santiagoherrera: video ROV13_4 at WHOI stopped
(7/13/2010 6:02:31 AM) santiagoherrera: thanks everyone, great job

 Font  Insert  Smile!  Attention!

NOAA ship Okeanos Explorer, "America's Ship for Ocean Exploration," is on a course to be the only U.S. ship assigned to systematically explore our largely unknown ocean for the purpose of discovery and the advancement of knowledge.



EDUCATION EXPLORATIONS SPECIAL FEATURES

 **Dive into lesson plans, professional development opportunities, and ocean career profiles.**


[Educational Materials](#)

[Professional Development](#)


[Resources](#)

Sign up for [e-mail updates](#) from NOAA Ocean Explorer.

USA.gov Search
Ocean Explorer

 **Exploring the Hidden World of the Maritime Maya 2011**
(September) Join us as an interdisciplinary expedition explores the forgotten world of the Maya in the Yucatan along the tip of Quintana Roo. See how the Maya maritime trade network was able to thrive in a challenging coastal environment that stretched from the Gulf of Mexico to the Caribbean.

 **Mid-Cayman Rise 2011**
(August) Join the NOAA Ship Okeanos Explorer as it travels to the deepest part of the Caribbean Sea, where a team of international scientists both at-sea and on shore will conduct interdisciplinary investigations of the Mid-Cayman Rise.

 **Galápagos Rift 2011**
(July) The NOAA Ship Okeanos Explorer embarks on a unique expedition to one of the most fascinating areas of the world's oceans, to explore the water column and unexplored benthic

STAY CONNECTED



 You can follow [Ocean Explorer on Twitter](#), a free social messaging utility for staying connected in real-time.
- [Get The Widget](#)

 [Podcasts RSS](#)

 [YouTube](#)

[Flickr](#) "Aliens From The Deep"

 [Google Earth/Maps](#)
Dive beneath the surface, explore the ocean with top marine experts, learn about ocean observations, climate change, and endangered species, and discover new places including seamounts and shipwrecks.

 [Google Earth Virtual Tour](#)

