

Vessel Tracker

Design Reqs

- Ingest position fixes from multiple sources (R/V noon slips, AIS/VOS messages, etc)
- Store data in SQL backend that can feed multiple frontends and maintain history
- Display R/V positions in simple interface (eg. Google Maps) with additional messages (eg. UHDAS), links, images

- Working on agreement with *sailwx.info* to harvest positions but this is less than ideal



Rolling Deck to Repository (R2R)



- Home
- About R2R
- Cruise Catalog
- News
- Contact Us
- Internal

Catalog Status

(In Service) Vessels: **26**

Cruises: **2217**

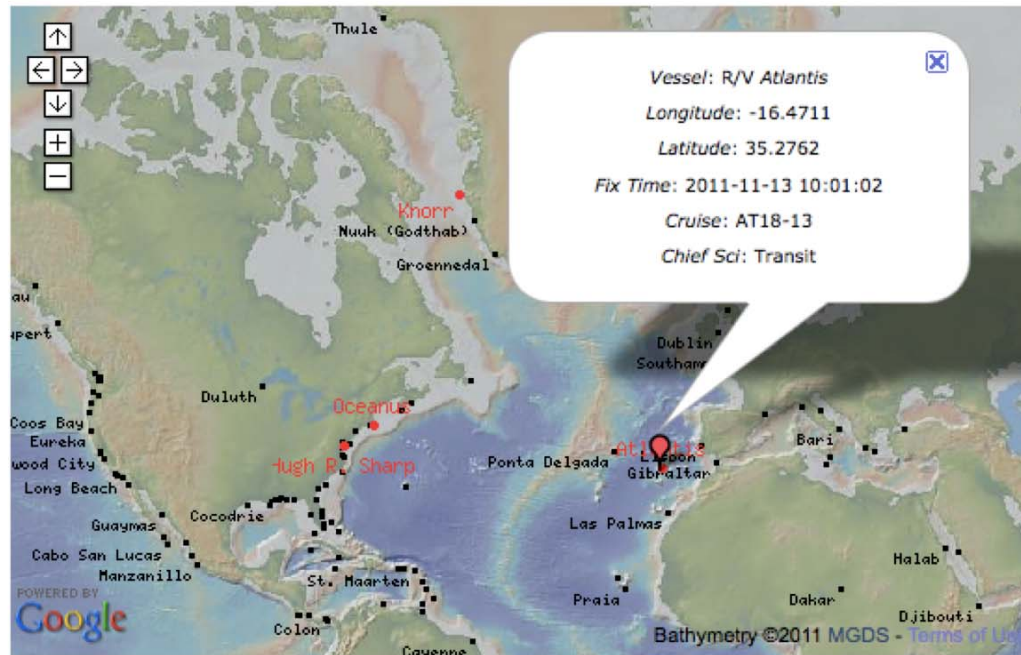
Archived Files: **8697775**

November 14, 2011

Search

Home

Vessel Tracker



<http://www.rvdata.us/tracker>

Proposed Protocol

1. Send daily email ashore –

```
To: dropbox@rvdata.us  
Subject: [Vessel Tracker]
```

```
Call Sign: KAQP
```

```
Position: $GPRMC,230102.00,A,0705.320005,N,08331.313280,W,  
8.94,96.1,261011,0,E,D*34
```

```
Cruise: AT18-12
```

```
Chief Sci: Scott Nooner
```

(any of \$GPRMC, \$INRMC, \$IIRMC, \$GLRMC, \$GNRMC)

or else

2. Add *Cc: dropbox@rvdata.us* to any existing email ashore (eg. VOS) with a posfix