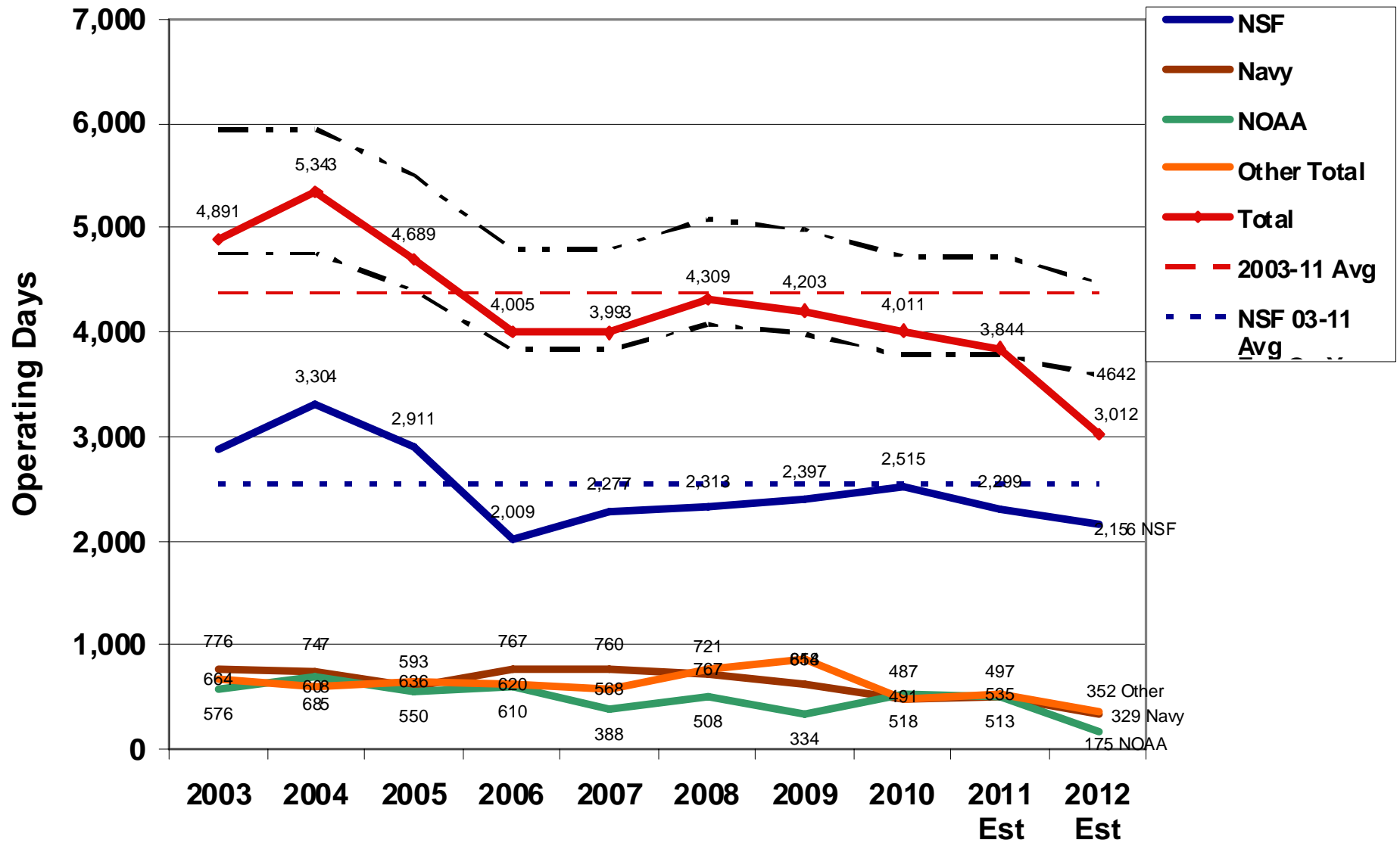


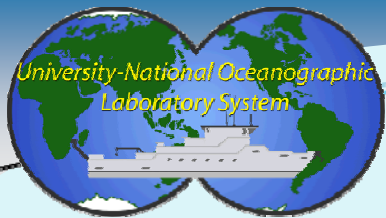


Fleet Planning

Utilization Trends and Future Initiatives

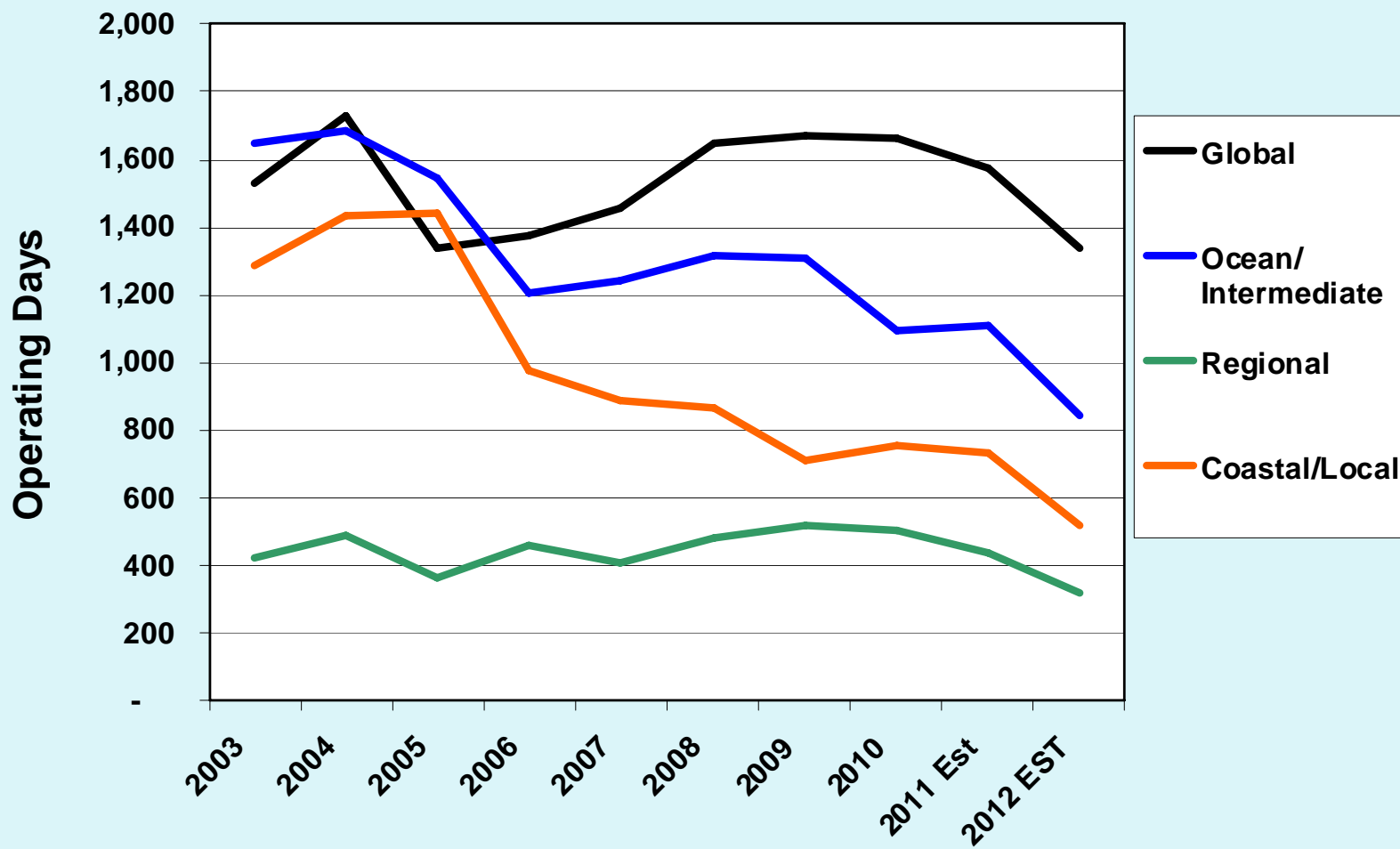
UNOLS Fleet Utilization (2003 - 2012)





SSC

Ship Utilization by Class: 2003 - 2012





OOI Projections

OOI Estimated Ship Days * (inclusive of DAS, transit, mob/demob) - January 2010 Update										
Infrastructure	Vessel Class	Days by year						2015	2016	2017
		2010	2011	2012	2013	2014				
		Construction				Operations				
Atlantic										
Pioneer Array	Global				24	24	24	24	24	
Pioneer Array	Intermediate		14							
Pioneer Array	< 80 ft.			4	12	12	12	12	12	
Irminger Sea	Global				33	33	33	33	33	
Argentine Basin	Global			24	24	24	24	24	24	
Pacific										
Regional Scale Nodes	Global+ROV	29			64	59	40	40	40	
Station Papa	Global			0	22	22	22	22	22	
Southern Ocean	Global					24	24	24	24	
Endurance Array	Global+ROV		0	0	5	5	5	5	5	
Endurance Array	Global				8	8	8	8	8	
Endurance Array	Intermediate	12	12	15	8	16	20	20	20	
Endurance Array	< 80 ft.				54	54	54	54	54	
Global testing	Intermediate	5								
	Global	5								
Total by vessel class										
UNOLS	Global	5	0	24	111	135	135	135	135	
	Global+ROV	29	0	0	69	64	45	45	45	
	Intermediate	17	26	15	8	16	20	20	20	
	< 80 ft.	0	0	4	66	66	66	66	66	

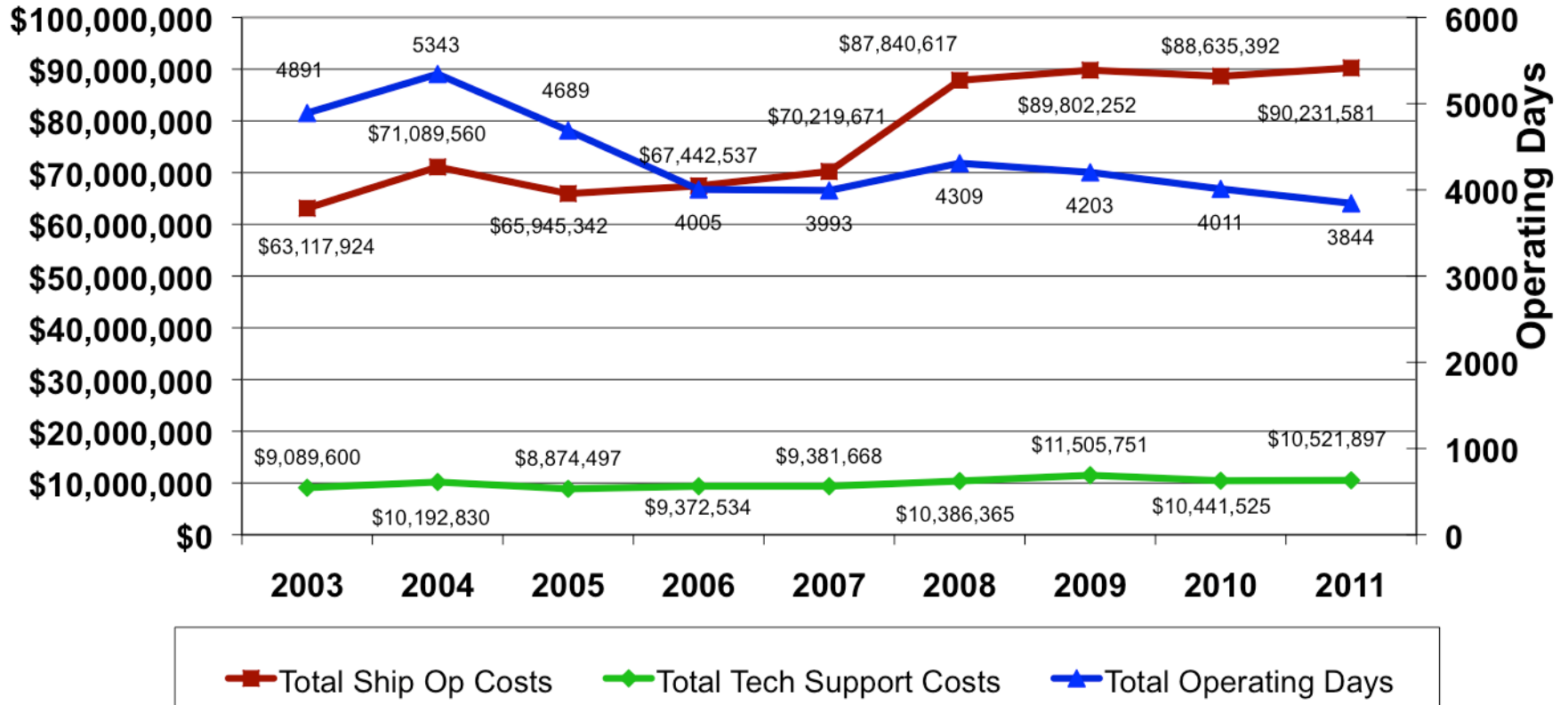


Fleet Planning

Day Rates and Apportioning
the Fleet Budget

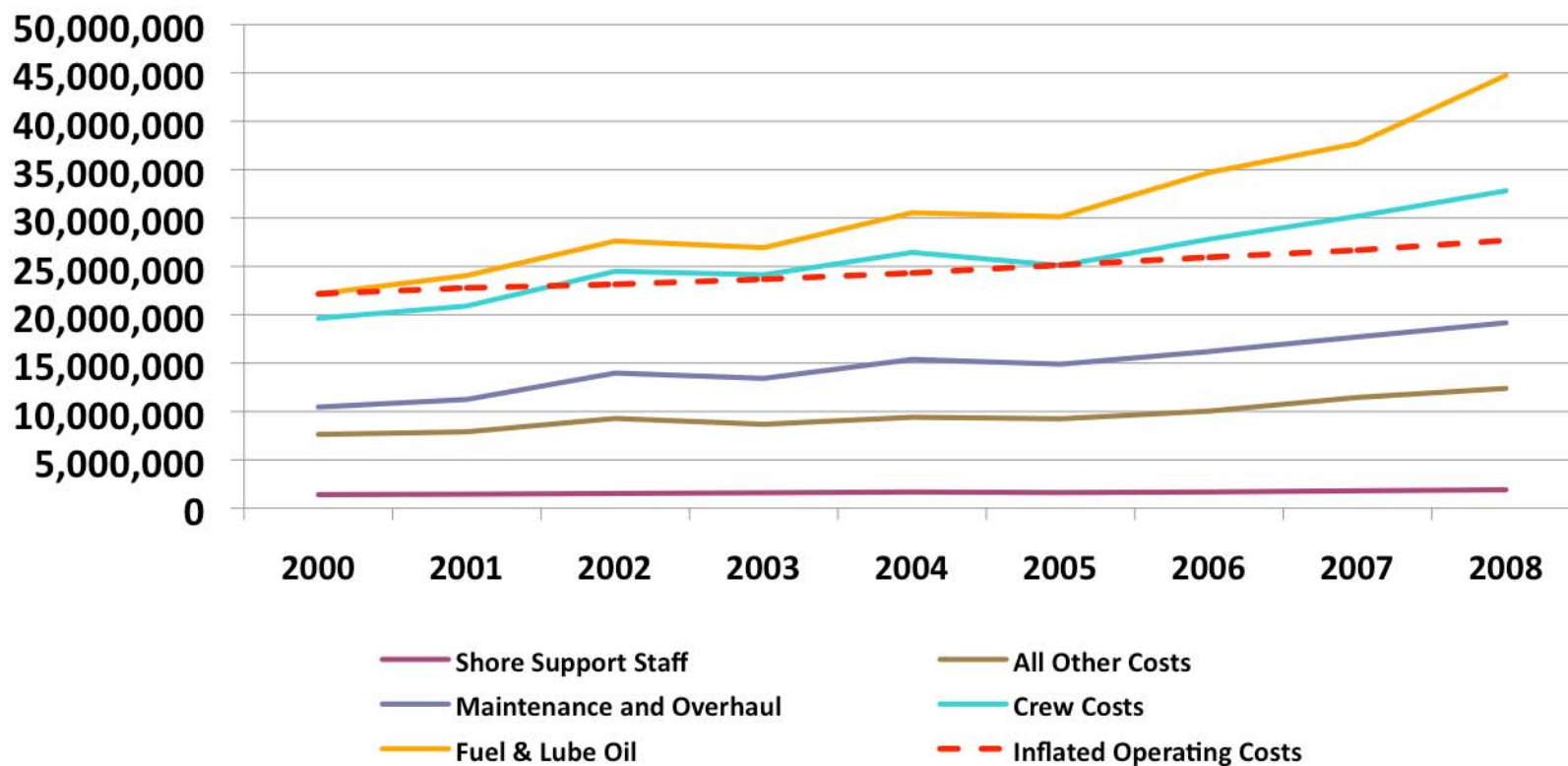


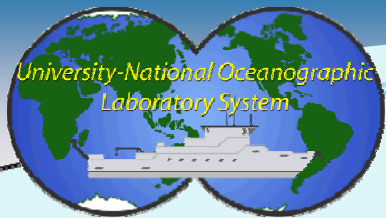
2003-2011 Fleet Operating Days and Costs



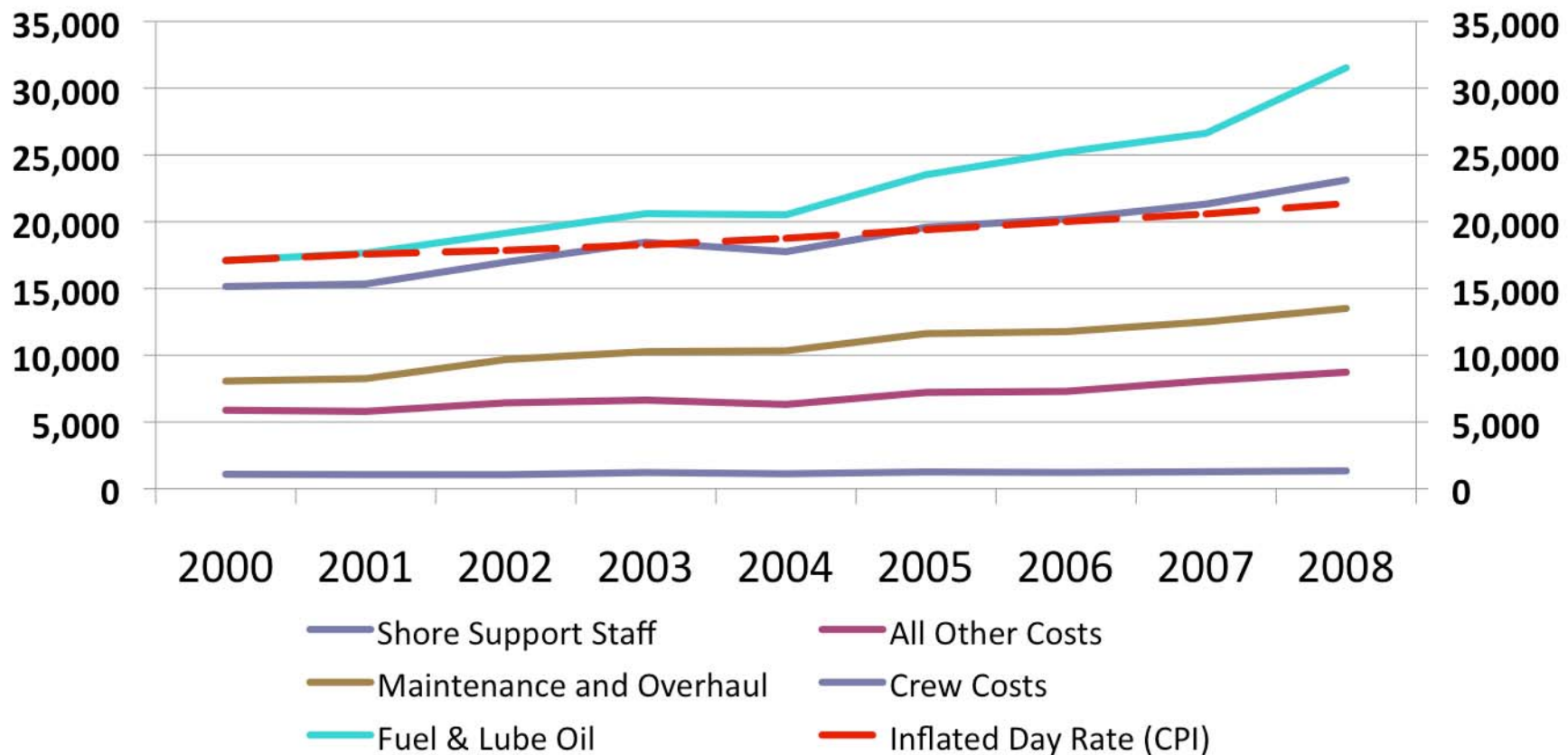


Trends for Major UNOLS Fleet Cost Factors 2000-2008



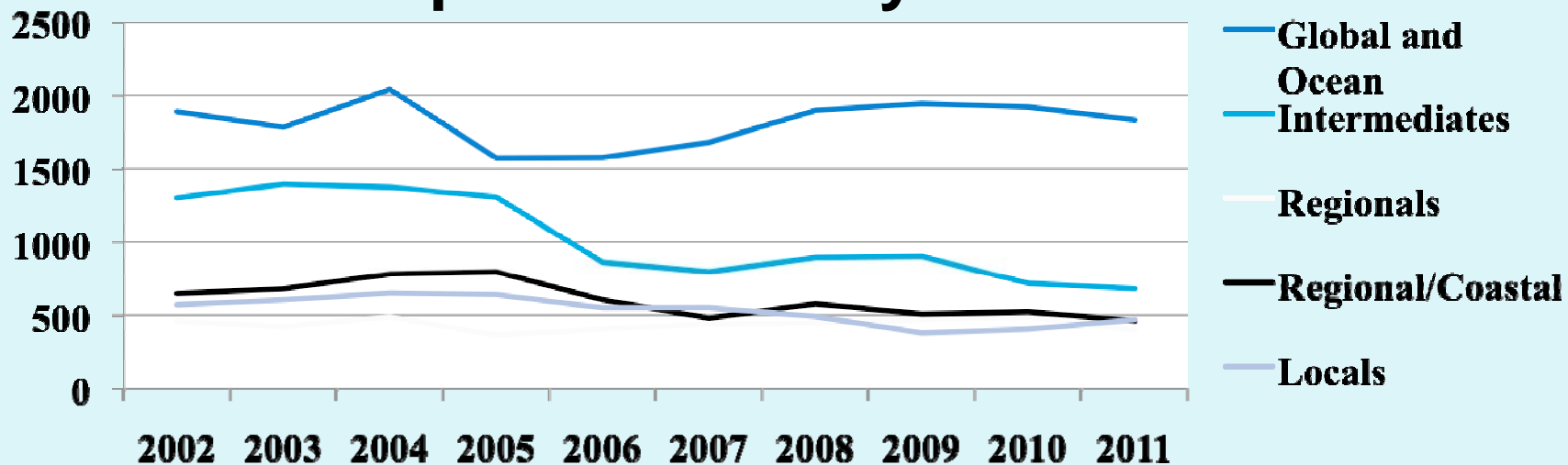


2000 - 2008 Cost Per Day Trends Global Class Vessels

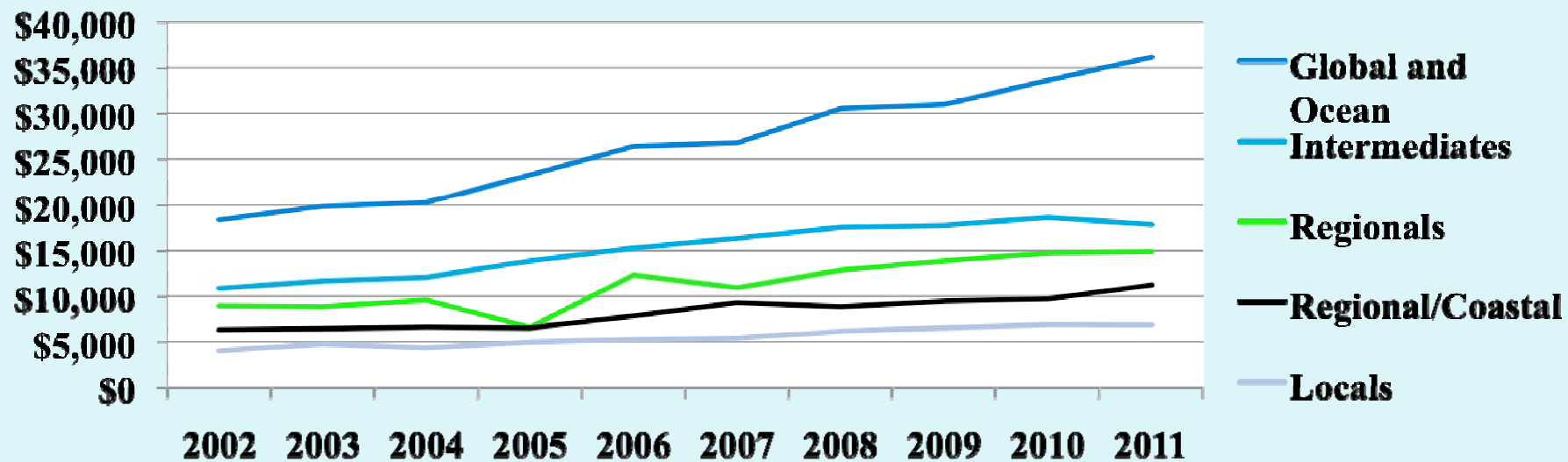




Ship Utilization by Class

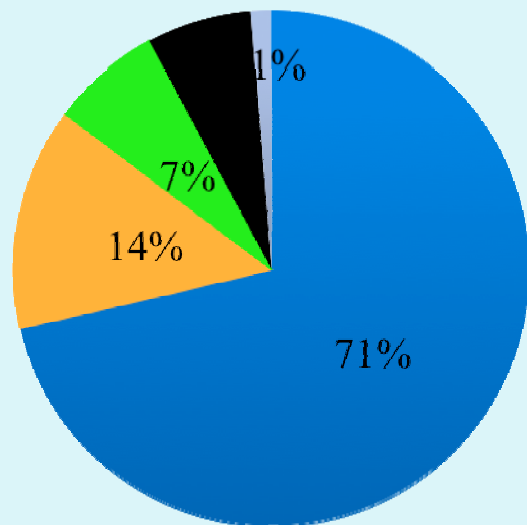


Average Day Rates by Class





2011 Fleet Costs by Class



- Global / Ocean
- Intermediate
- Regional
- Region/Coast
- Local

Global / Ocean	\$66,328,404
Intermediate	\$12,960,804
Regional	\$6,393,799
Region/Coast	\$6,100,476
Local	\$1,165,937