

# NOAA 2011 Report

## DEep Submergence Science Committee Meeting June 16, 2011

*Catalina Martinez, NOAA OER*

# EX 2011 Schedule

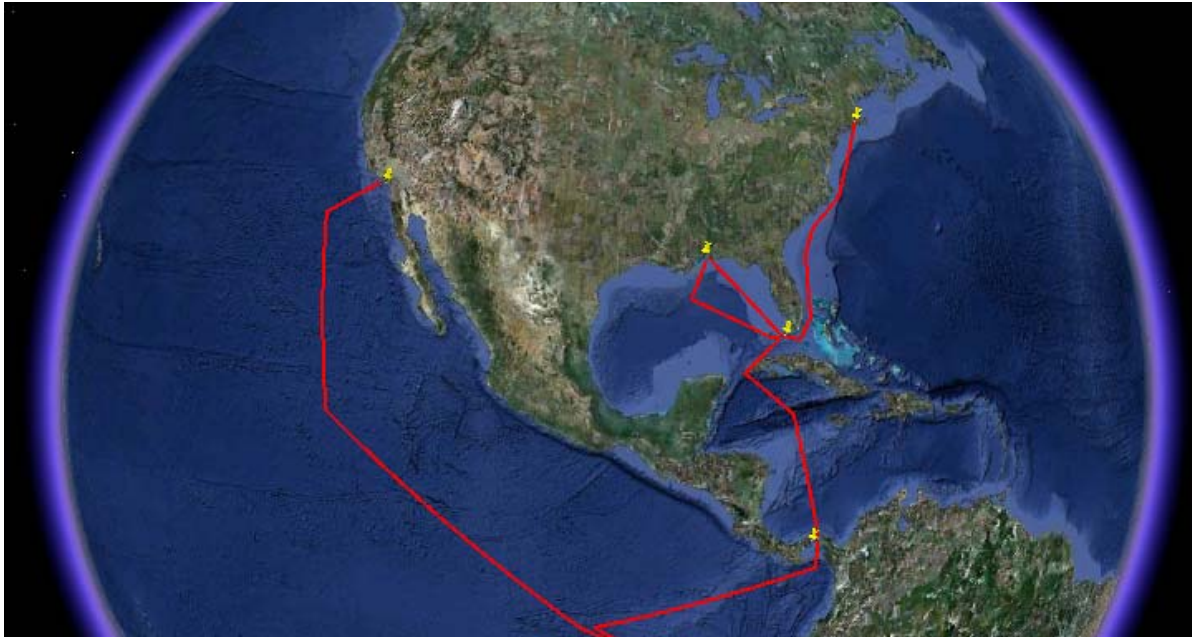


Image © 2011 DigitalGlobe  
 Image IBCAO  
 Data SIO, NOAA, U.S. Navy, NGA  
 Image © 2011 TerraMetrics



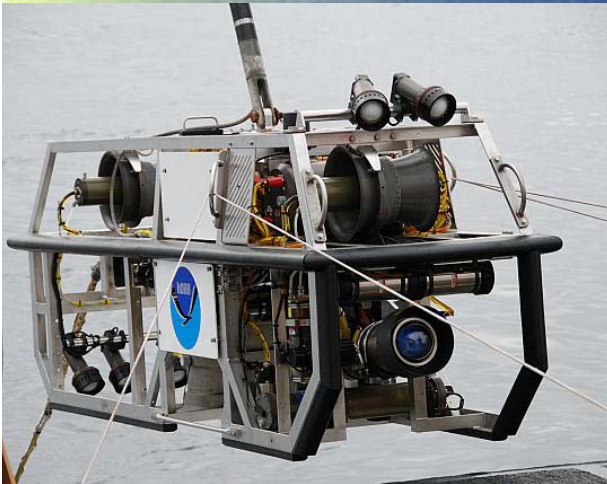
	Dates	Location	Cruise
<b>DEP:</b>	6/8/11	San Diego, CA	<b>EX-11-03, Leg I</b>
<b>ARR:</b>	7/2/11	Puntarenas, Costa Rica	Exploration Mapping Galapagos Spreading Center
<b>DEP:</b>	7/7/11	Puntarenas, Costa Rica	<b>EX-11-03, Leg II</b>
<b>ARR:</b>	7/28/11	Balboa, Panama	Exploration, Galapagos Spreading Center
<b>DEP:</b>	8/2/11	Balboa, Panama	<b>EX-11-04 (includes canal transit)</b>
<b>ARR:</b>	8/18/11	Key West	Exploration, Cayman Trench
<b>DEP:</b>	8/22/11	Key West, FL	<b>EX-11-05</b>
<b>ARR:</b>	9/10/11	Northern Gulf of Mexico	Exploration Mapping, Gulf of Mexico
<b>DEP:</b>	9/15/11	Northern Gulf of Mexico	<b>EX-11-06</b>
<b>ARR:</b>	9/27/11	Davisville, RI	Exploration Mapping to Davisville, RI





# EX Vehicles

2011 – 2012



**NOAA OER  
Camera Sled Seirios**



**IFE ROV *Little Hercules***

2013



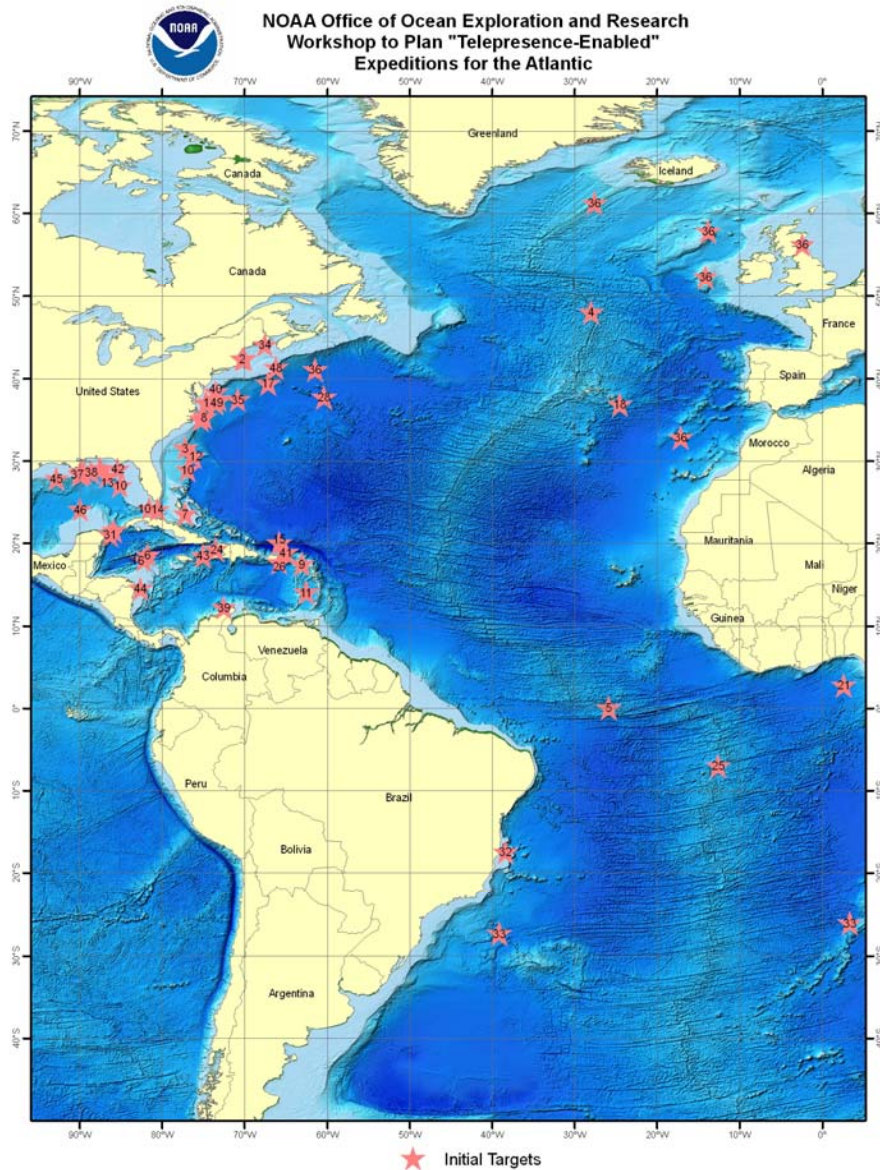
**NOAA OER ROV**



# NOAA Atlantic Basin Workshop

## May 9/10, 2011

### URI Coastal Institute



#### Objectives:

- Community input for 2012 and beyond
- 4 major areas: N. Atlantic, S. Atlantic, GOM, Caribbean
- Application of 'telepresence' ops model
- Discuss key challenges & opportunities

#### Solicitation/participation:

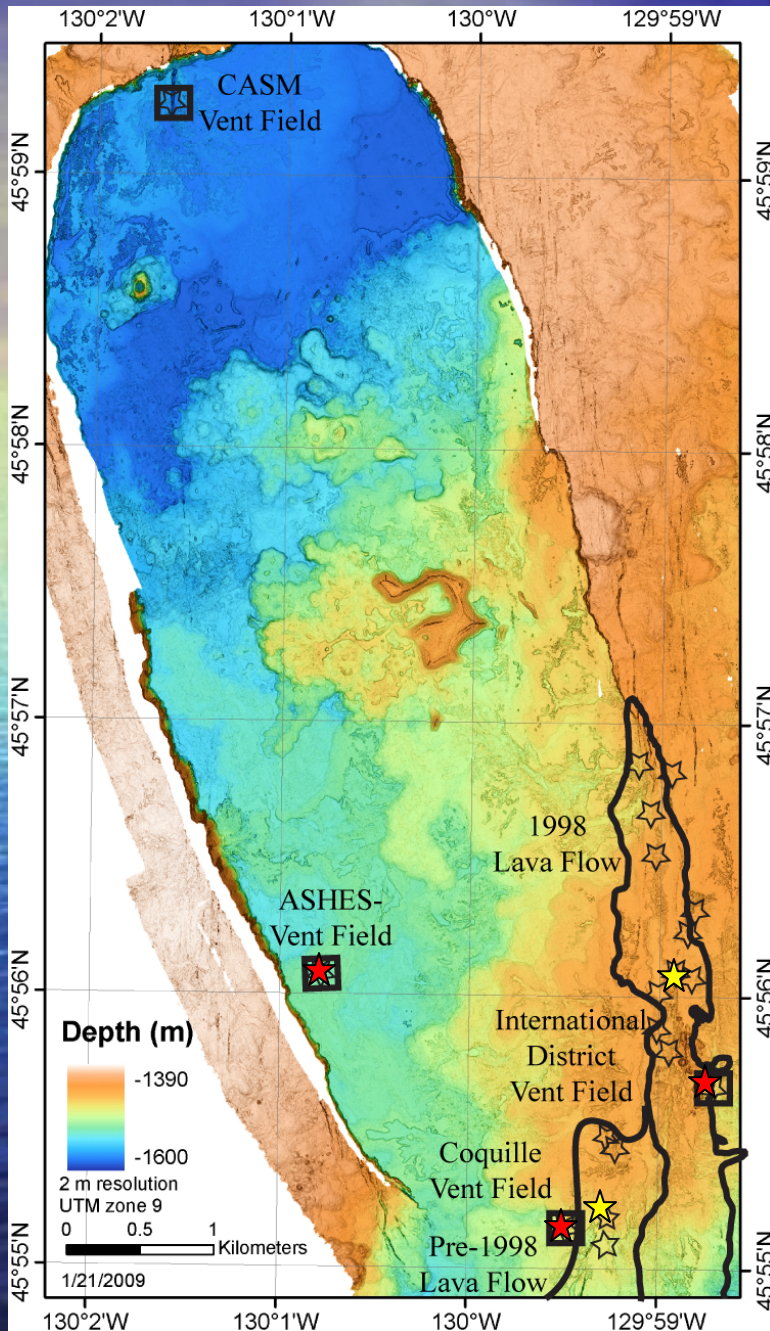
- Received ~ 50 white papers
- 40 participants from academia, gov't, private sector, multidisciplinary

#### Results:

- Reviewed submitted ideas/target areas
- Incorporate results into planning
- Engage community
- Evolution of model
- Summary in dev't

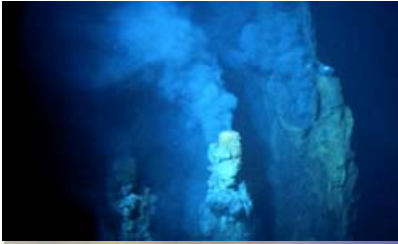


# PMEL NeMO Project Axial Volcano



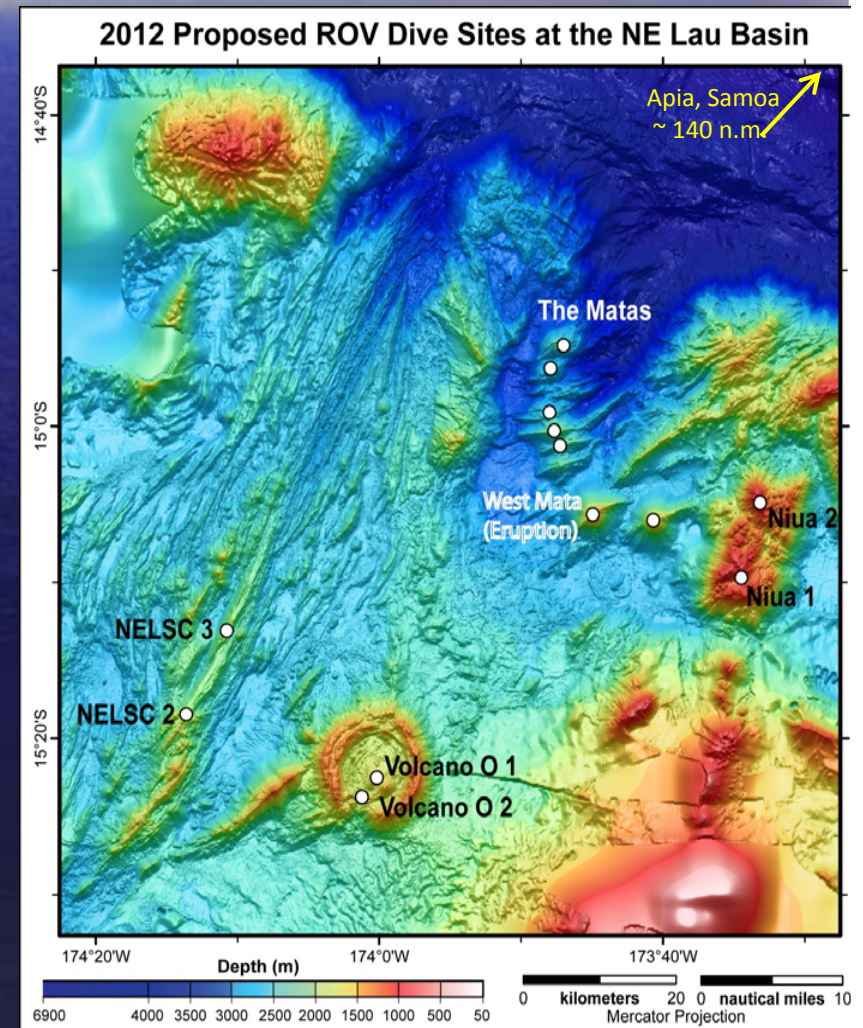
- 2011 combined cruise Atlantis/Jason:
  - Chief Sci: Bill Chadwick
  - July 19-Aug 1
  - NSF funded w/3 days funded by Vents
- 2012 funding uncertain: Trying for 2-4 ROV days for mooring and sampling work
- Long-term time series chemistry and microbiology
- Geodetic and seismo-acoustic monitoring





# 2012 NOAA PMEL Vents NE Lau Dive Program

- 12 Jason dives funded by OER
- Ship TBD: Revelle, Melville?
- Water column surveys
- High potential for geological/chemical & chemosynthetic biologic diversity
- Interdisciplinary
- High outreach potential
- Revisit to the world's deepest eruption site (West Mata still active as of 12/2010)







# HURL 2011

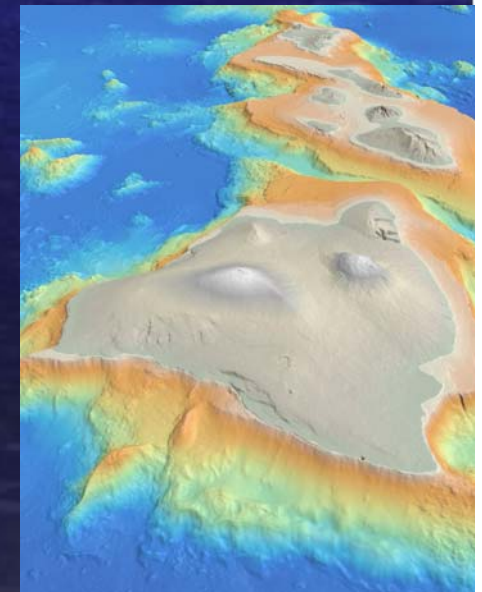


## Operations:

- 50+ *Pisces* dives planned
- **Feb-March:** Main HI Islands w/combined technical 'wet' diver operation
- **Sep-Oct:** Main HI Islands - documentary filming with projects to Necker Ridge & Papahānaumokuākea Marine National Monument in NWHI
- **NOAA Deep CRES (Coral Reef Ecosystems Studies)**
  - *Pisces V* + technical divers using rebreathers
  - 70+ m depth range in 'Au'au channel off Maui
  - Examine various aspects of mesophotic (low light) corals
  - Final installment in an annual cruise series

## Updates:

- New Schilling Titan 4 arm on *Pisces V*
- Replacement ROV?
- MBARI VARS video annotation & reference system adapted for use with new *Pisces* HD system
- Limited refit going on now (full ABS Special Survey for *Pisces V* was in 2010, *Pisces IV* due in 2012)



# NOAA OER in Rhode Island . . .



*EX Homeport Facility, Davisville, RI*

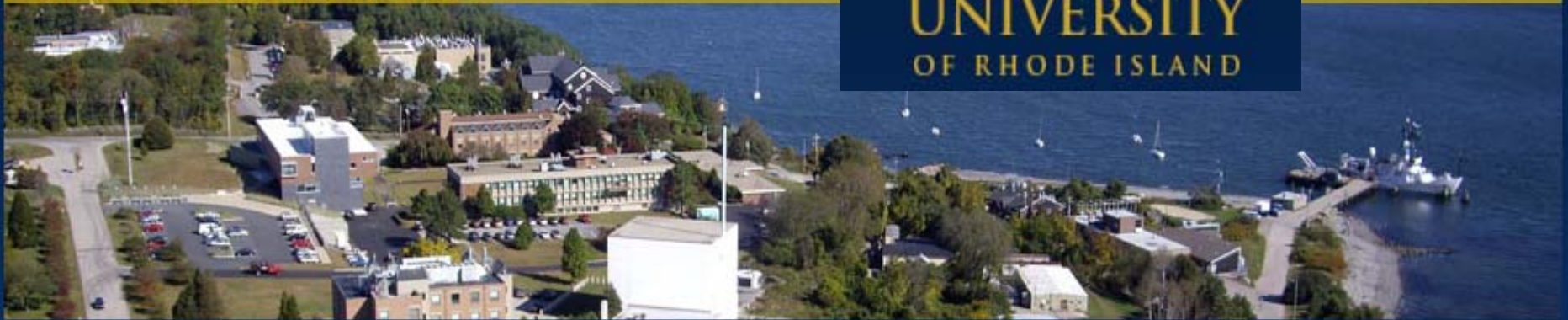


**Inner Space**  
center



**GSO** Graduate School of Oceanography  
at the University of Rhode Island





About

GSO Academics

GSO Research

RV Endeavor

GSO Facilities

GSO Outreach

Features

## GSO Celebrates its 50th Anniversary



**Saturday, June 25 and Sunday, June 26**

Graduate School of Oceanography  
University of Rhode Island  
Narragansett Bay Campus  
South Ferry Road, Narragansett

**Saturday, June 25**  
10 am–4 pm

**Science Saturday Open House**  
Ship tours, science exhibits, kids activities  
(free and open to the public)