



# UNOLS Council Meeting

## June 14-15, 2011



BOEMRE





# UNOLS Council Meeting

## *Day One Presentations*

### June 14, 2011



BOEMRE







# UNOLS 2011 Fleet Schedules, estimated operation costs, and 2012 Ship Scheduling

*Report by Stewart Lamerdin and Jon Alberts*



BOEMRE



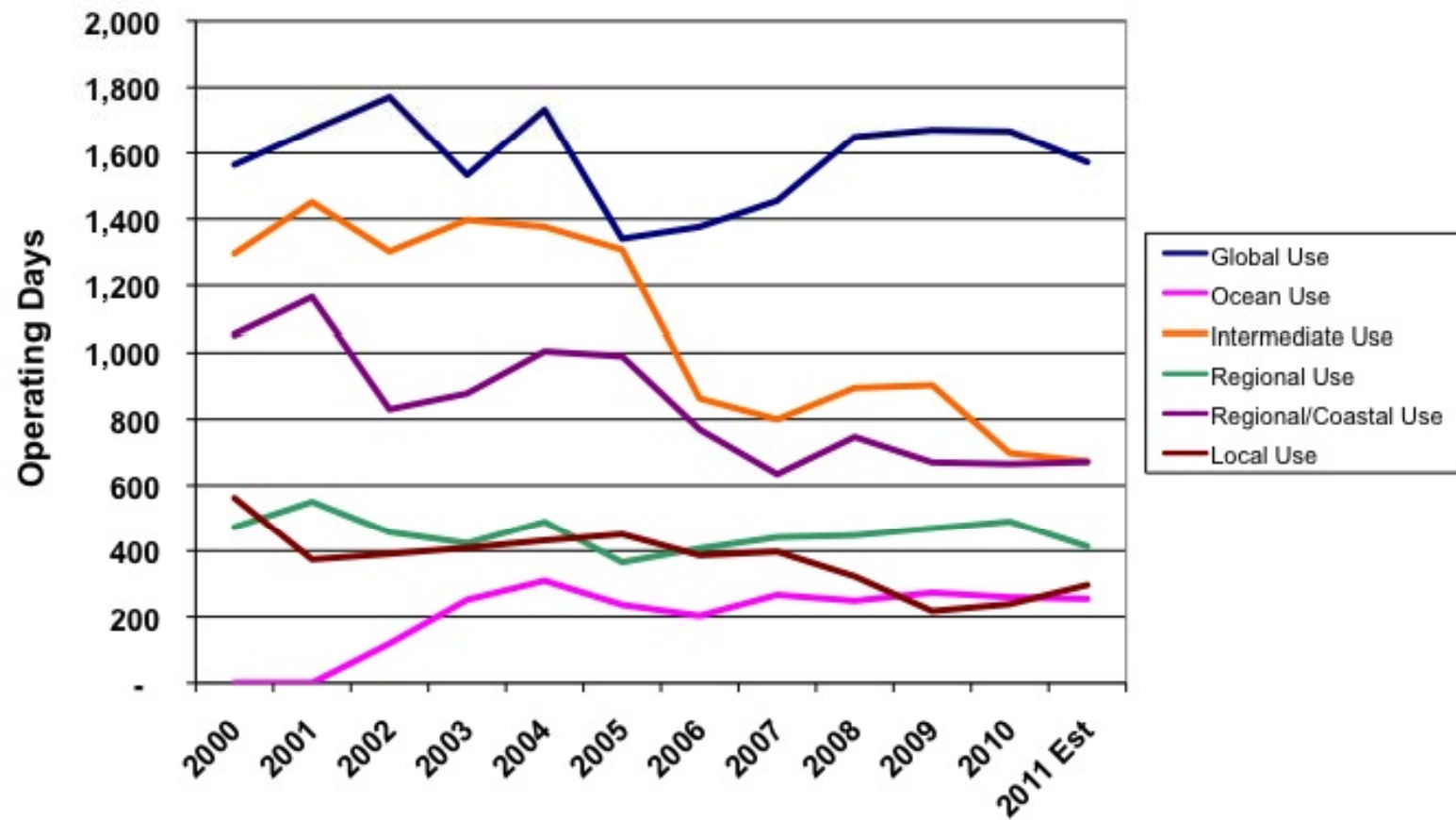


# Ship Scheduling Committee Report

UNOLS Council, Summer Meeting  
June 14-15, 2011

# 2011 Fleet Status

## Ship Utilization by Class: 2000 - 2011





# *Estimated Operational Budgets* for 2012

- NSF      \$42 million (was \$63 million in 2011)
  - ONR      \$10 million (was \$12 million\* in 2011)
  - NOAA    \$8 million (was \$8 million in 2011)
- \$60 million projected for 2012

Projected cost of operating the fleet in 2011:  
\$90-\$95 million

\*ONR costs increased above \$12 million due to operational issues  
(Estimates do not include Technical Services costs)

# Proposal Pressure Status

- Funded/Operational Days, 2011: 3879
- Estimate of “funded” days in 2012:
  - Funded operational days: 2041
  - Pending operational days: 955
  - **Total estimated days: 2996**

Best case scenario (described here):  
22% reduction in fleet utilization

*\*\*Funded science days includes a 1.35 multiplier for estimating mob/demob, transits*

*\*\*Pending sciences assumes the same multiplier and applies a 30% success rate*



# Some good news

4 of the 21 ships in the fleet have viable schedules for 2012:

- R/V Endeavor (helped by the removal of R/V Oceanus)
- R/V Marcus Langseth (many years of delayed projects)
- R/V Atlantic Explorer (helped by the BATS work)
- R/V Pelican (BP funding and heavy demand in the GOM)



# Next steps

- Continue the scheduling process for all ships
- Scheduling Committee meeting in San Diego
- Teleconference with each operator to discuss posted LOI's for 2012 (planned for early July)
- Scheduling Committee will report to council on areas of concern:
  - Orphaned cruises (i.e. cruises requiring extensive dead-head transits)
  - Geographic areas of reduced operations
  - Particularly weak ship schedules

# Issues for Consideration

- Operators, schedulers and the Council should continue to pursue *non-traditional* sources of funding for ship-time (universities, private institutions, other federal agencies, BP, etc.)
- A review of the criteria for ship layups

*2012 is shaping up to be a particularly challenging year for the continued operation of all vessels in the UNOLS fleet*



