

# Post Cruise Assessment Report Committee

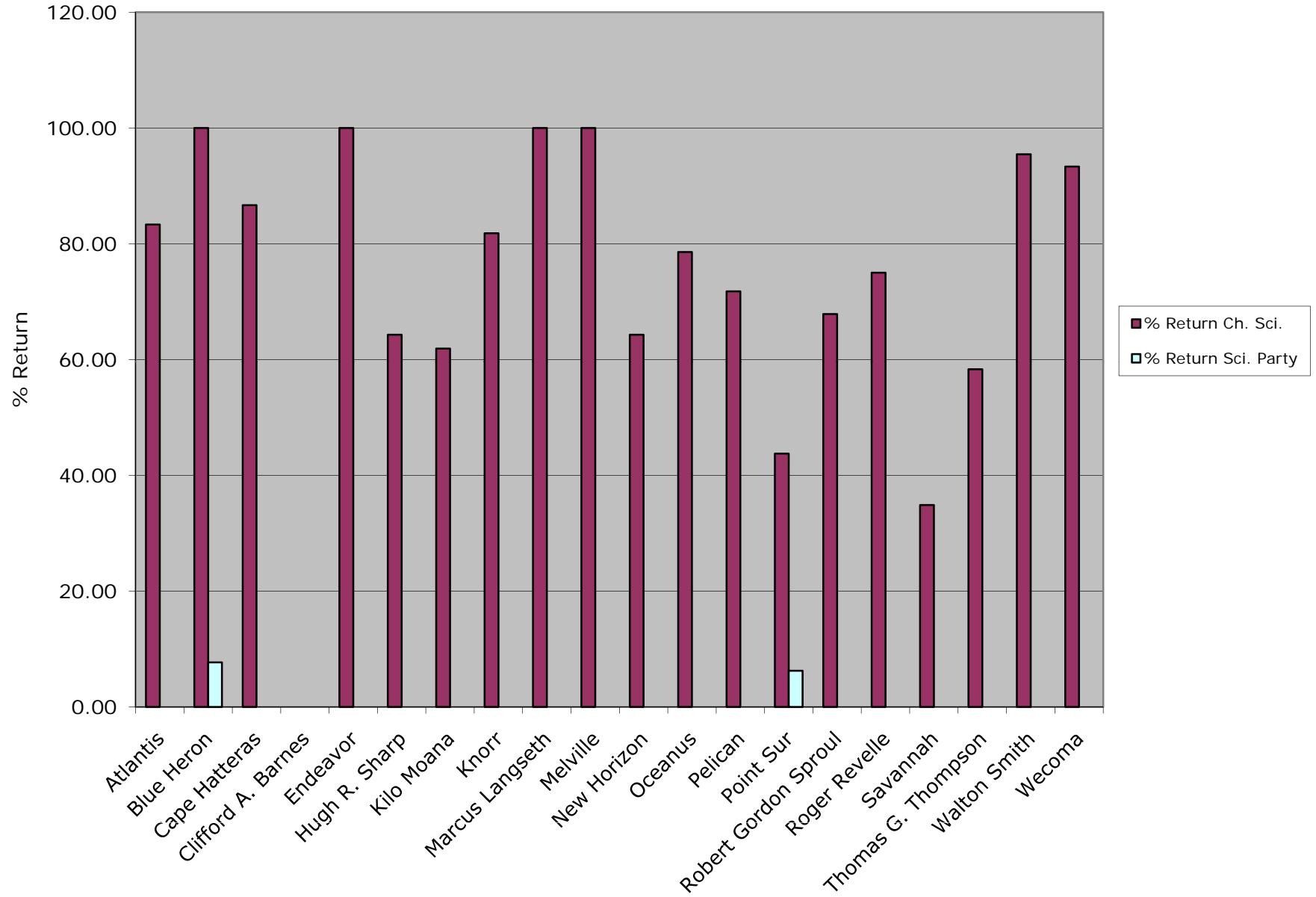
## Members of PCAR

- Wilf Gardner/TAMU- Chair
- Joe Malbrough/LUMCON/RVOC Chair
- Daryl Swenson/OSU

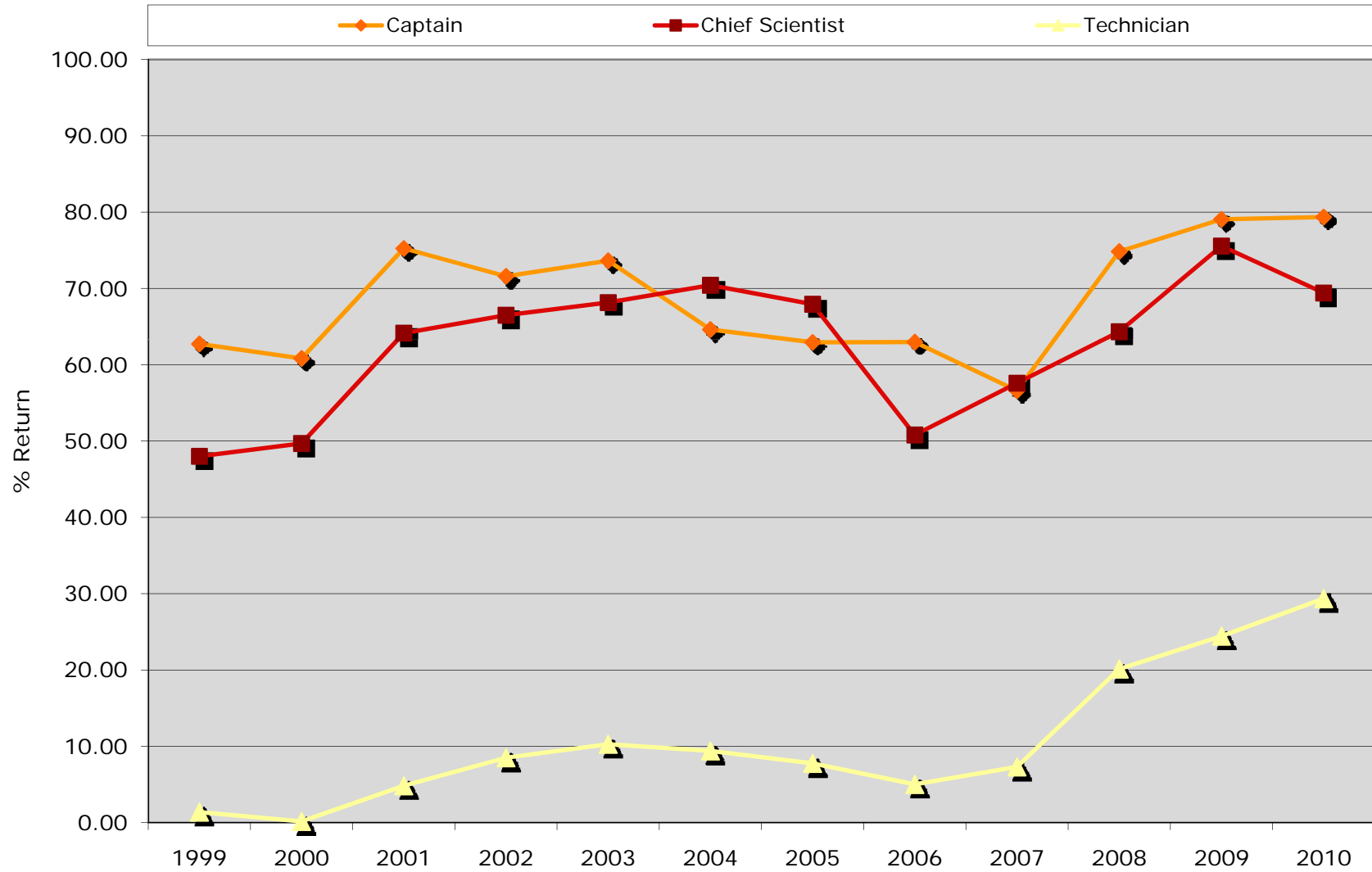
## Recently stepped down

- David Fisichella/WHOI
- Bob Collier/OSU

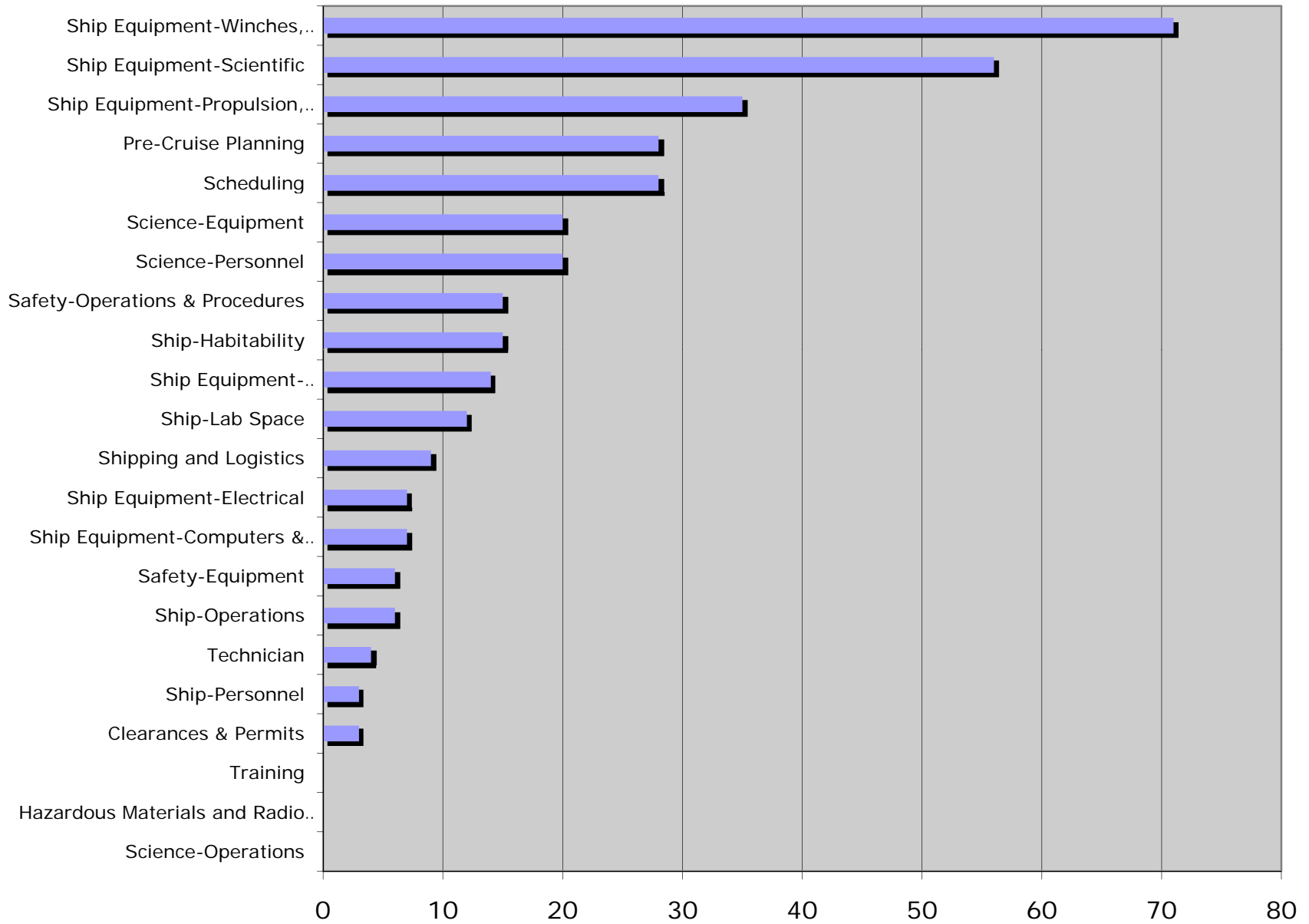
### % Return: Chief Scientists and Science Party, by Ship



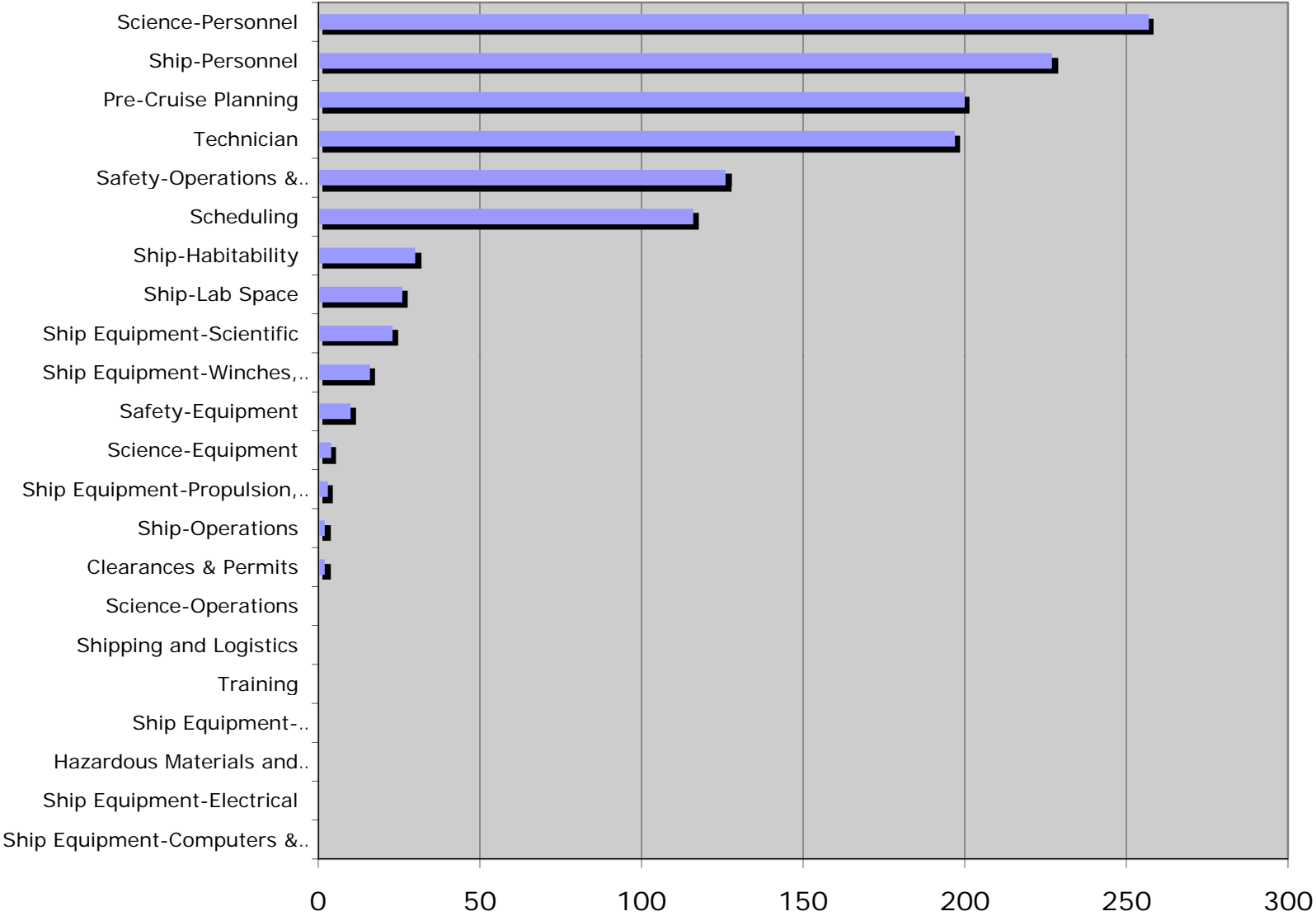
## Fleet Percent Return for Post Cruise Assessments 1999 - 2010



# Suggestions



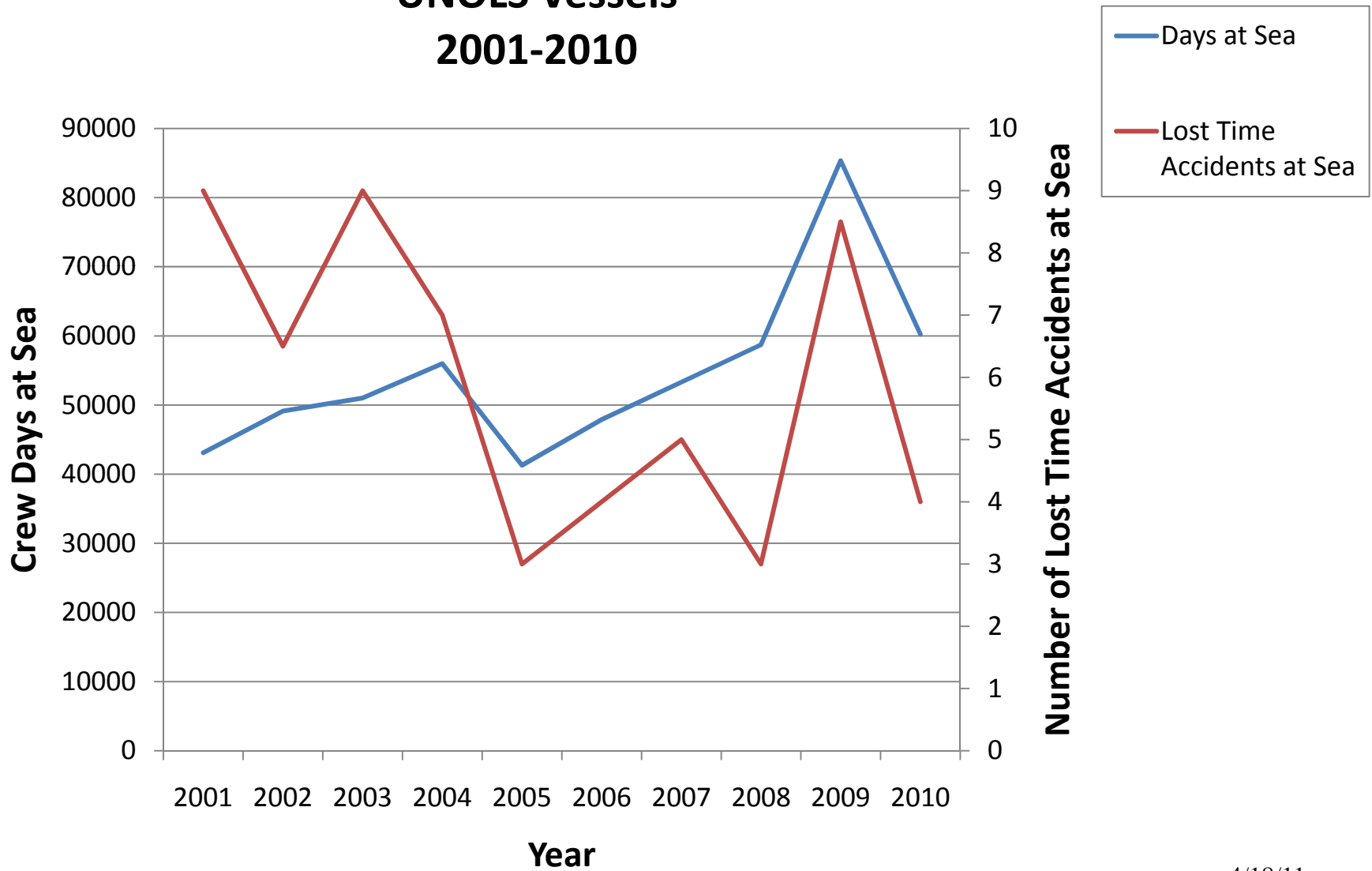
# Positive Comments



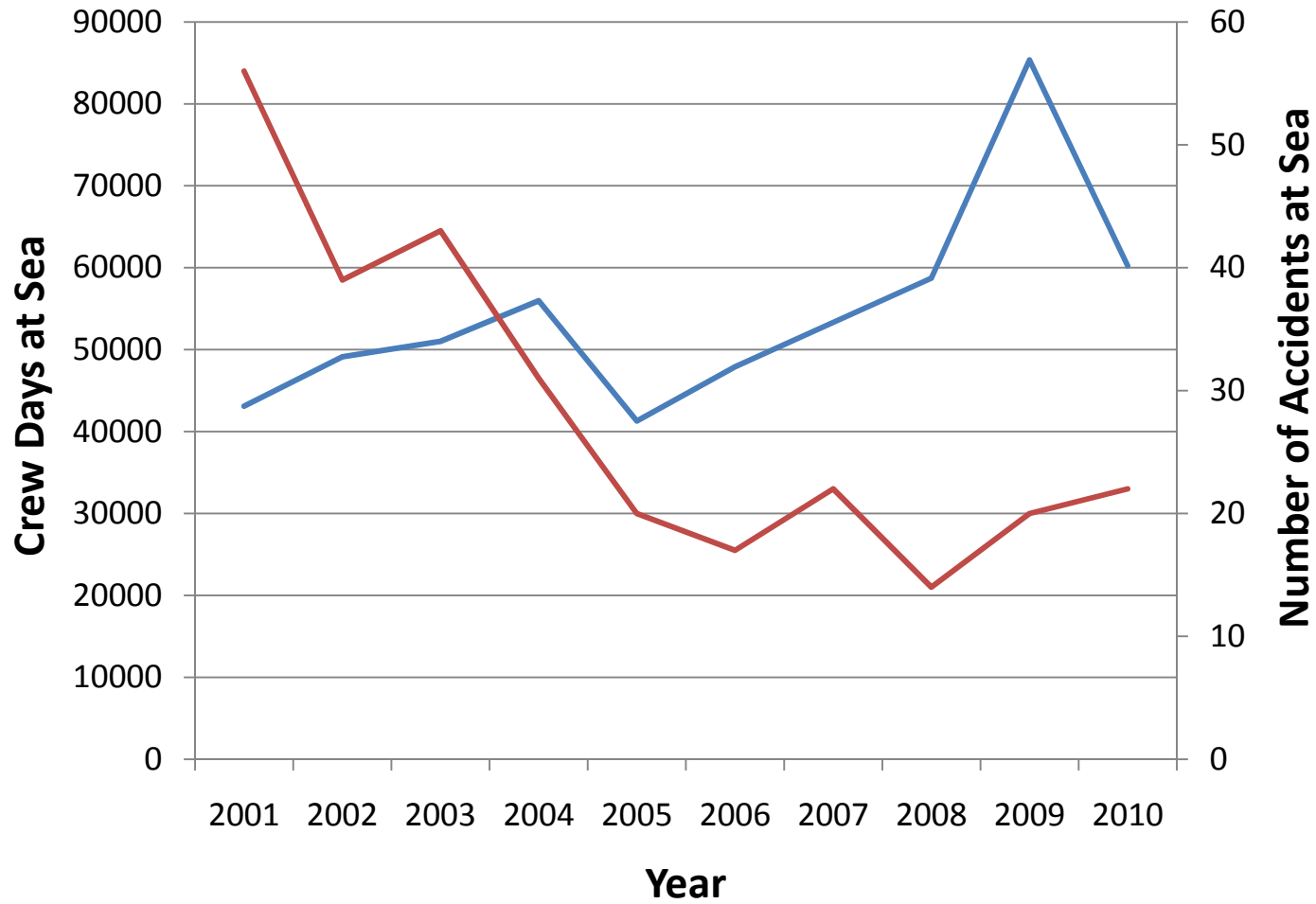
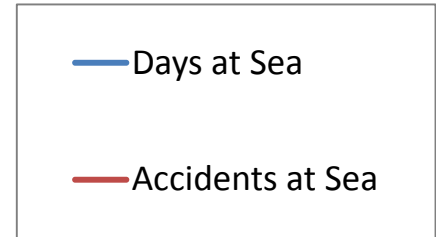
# Safety Report Statistics

<b>2010 RVOC Safety Statistic Reports Received</b>				
<b>Click on the link below to complete reports</b>				
<a href="http://www.unols.org/committees/rvoc/rvoc_only/safetyrept.asp">http://www.unols.org/committees/rvoc/rvoc_only/safetyrept.asp</a>				
<b>Quarter Reported</b>	<b>2010-1st</b>	<b>2010-2nd</b>	<b>2010-3rd</b>	<b>2010-4th</b>
Atlantic Explorer	X	X	X	X
Atlantis	X	X	X	X
Blue Heron	X	X	X	X
Cape Hatteras	X	X	X	X
Clifford A. Barnes	X	X	X	X
Endeavor	X	X	X	X
Hugh R. Sharp	X	X	X	X
Kilo Moana	X	X	X	X
Knorr	X	X	X	X
Marcus Langseth	X	X	X	X
Melville	X	X	X	X
New Horizon	X	X	X	X
Oceanus	X	X	X	X
Pelican	X	X	X	X
Point Sur	X	X	X	X
Robert Gordon Sproul	X	X	X	X
Roger Revelle	X	X	X	X
Savannah	X	X	X	X
Thomas G. Thompson	X	X	X	X
Walton Smith	X	X	X	X
Wecoma	X	X	X	X
<b>Total Ships Reported</b>	<b>21</b>	<b>21</b>	<b>21</b>	<b>21</b>
<b>Total Ships</b>	<b>21</b>	<b>21</b>	<b>21</b>	<b>21</b>
<b>% of Ships Reported</b>	<b>100%</b>	<b>100%</b>	<b>100%</b>	<b>100%</b>

# Total Days at Sea and Total Lost Time Accidents at Sea UNOLS Vessels 2001-2010

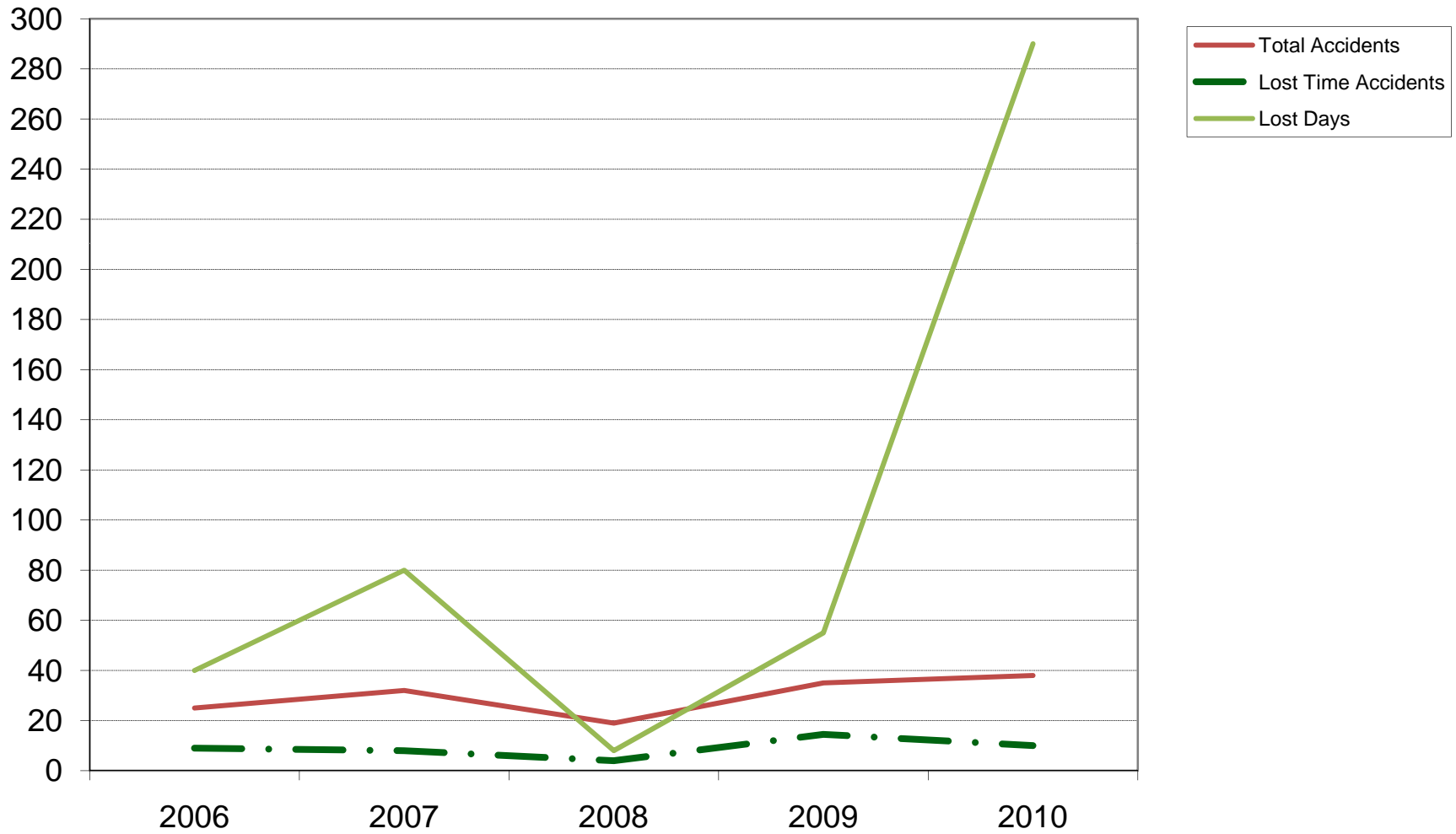


# Total Days at Sea and Total Accidents at Sea UNOLS Vessels 2001-2010

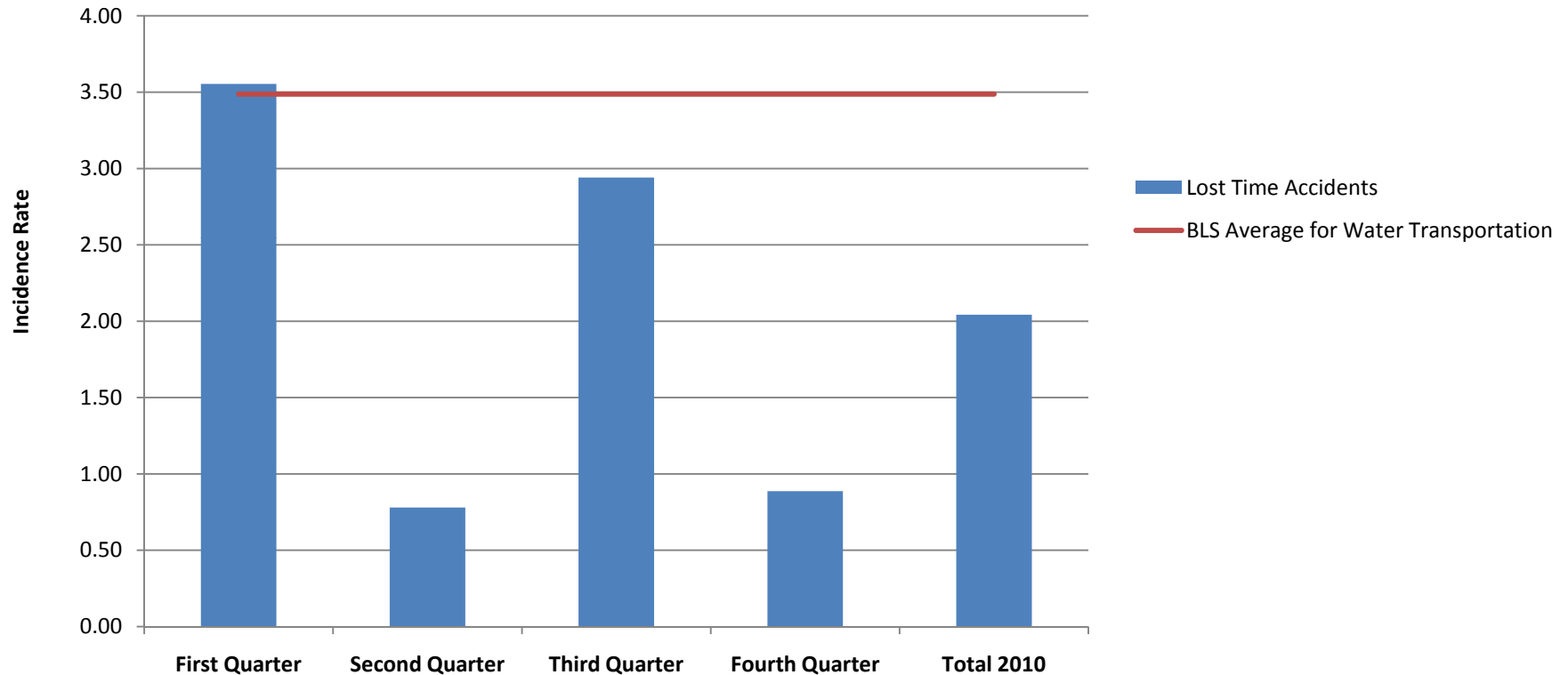




## UNOLS Fleet 2006-2010 Total Accidents and Lost Days



**2010 Lost Time Accidents  
UNOLS Vessels  
Per 100 F/T Employees**



Incidence Rate = (Number of injuries X 200,000)/Employee hours worked

Note: The 200,000 in the formula represents the equivalent of 100 employees working 40 hours per week for 50 weeks per year and provides the standard base for incidence rates according to the Bureau of Labor Statistics (BLS).