



UNOLS

SHIP SCHEDULING REPORT UNOLS RVOC MEETING April 26-28, 2011



UNOLS Ship Scheduling Committee

SSC Chair

Stewart Lamerdin- 10/10-10/13

SSC Chair Elect

Rose Dufour & Liz Brenner- 3/11-10/13

2012 UNOLS Fleet Scheduling & Planning

- January 26 & 27, 2011
- Global Ship Schedulers met with NSF, ONR,NOAA reps in San Diego
- First Cut at 2012 schedule options with Agency input on priorities.
- Letters of Intent developed

- February- May
- Schedulers worked on letters of intent, funding decisions.
- [April Re-evaluate global 2011 schedules based on recent causality/ shipyard issues and impact to 2012 schedules]

- May-September
- Begin Ship Scheduler's Conference Calls-
- Late Summer 2011- Scheduling Meeting at NSF- to be determined

2012 Outlook as of April 25, 2011

Funded Days – 1456

Total Pending & To Be Submitted- 1731

Funded Days by Class

Globals- 679 days

Atlantic Explorer-109

East Coast Intermediate & Regional- 211

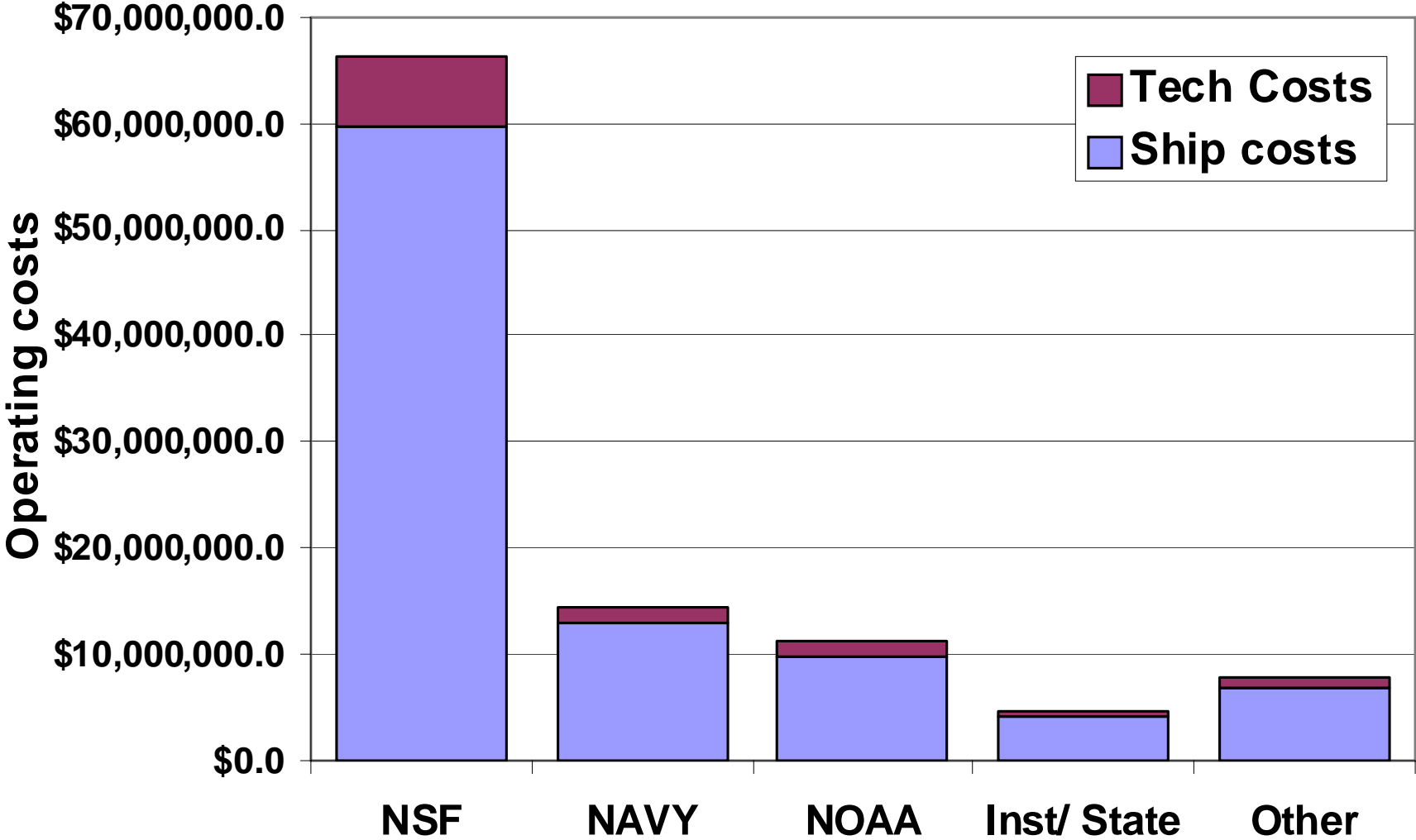
West Coast Intermediate & Regional-77

Local Ship- 157

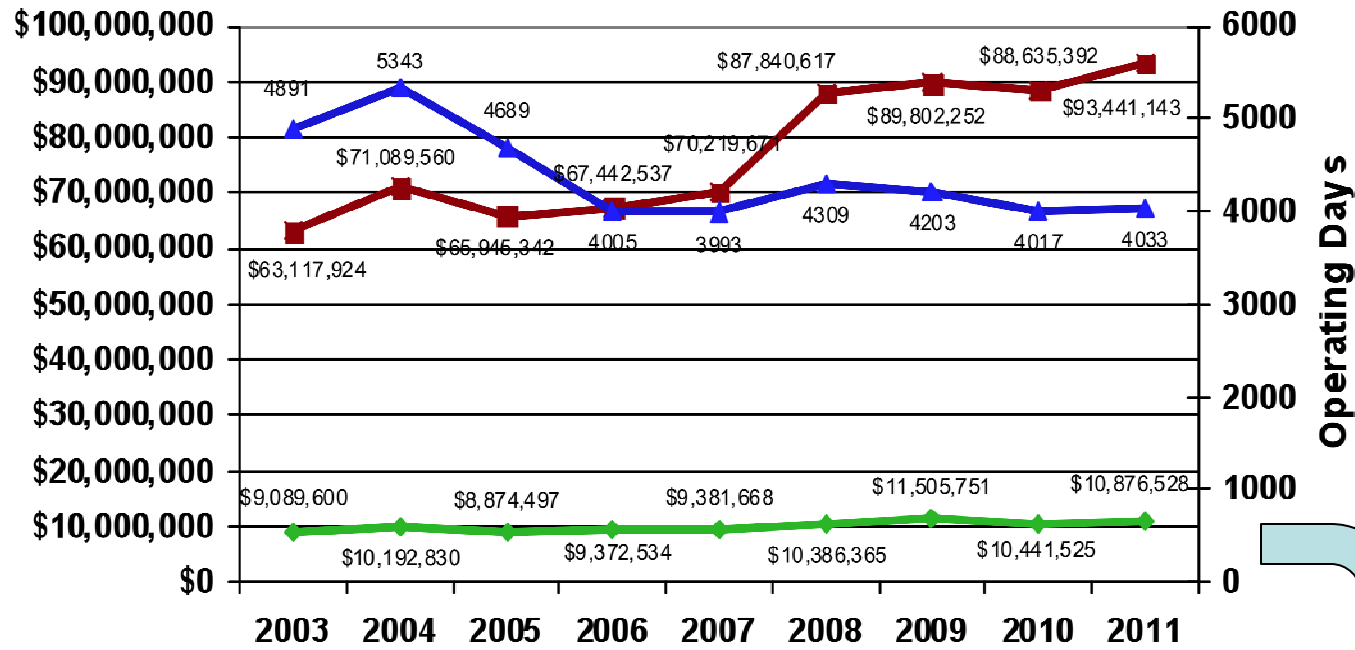
Miscel: RFP phase II- aftermath to Deep Horizon Oil Spill

<http://www.gulfresearchinitiative.org/request-for-proposals/> Gulf of Mexico
Research Initiative (GRI) **The deadline to submit a Letter of Intent (LOI)
is May 9, 2011 at 9:00 p.m. EDT.**

2011 Ship Op Costs by Agency



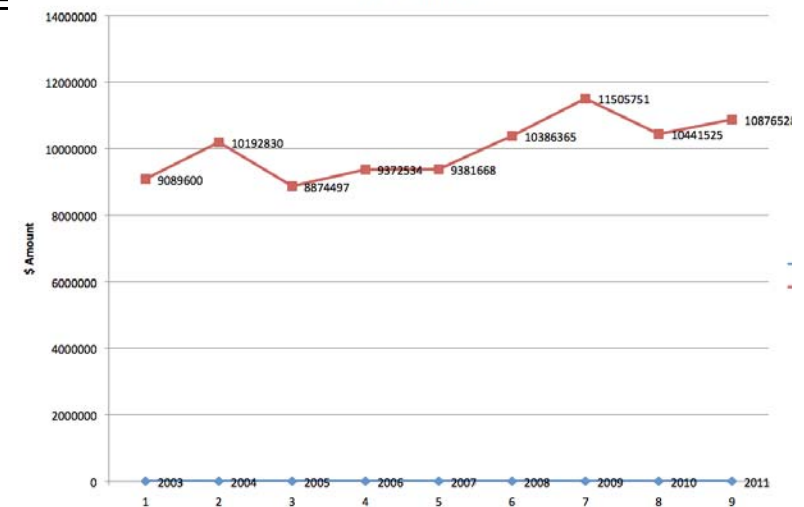
2003-2011 Fleet Operating Days and Costs



■ Total Ship Op Costs
 ◆ Total Tech Support Costs
 ▲ Total Operating Days

Operating Days

Technician Cost



OOI Estimated Ship Days for UNOLS Fleet (inclusive of DAS, transit, mob/demob) - April 13, 2011 Update

Infrastructure	Location/Requested Start port	Vessel Class	Days by year								
			Actual 2010	2011	2012	2013	2014	2015	2016	2017	
			Construction						Operations		
Atlantic											
Pioneer Array	Mid Atlantic Bight/WHOI	Global			7	24	24		24	24	24
Pioneer Array	Mid Atlantic Bight/WHOI	Intermediate		7							
Pioneer Array	Mid Atlantic Bight/WHOI	< 80 ft.			4	12	12		12	12	12
Irminger Sea	Greenland/WHOI	Global				33	33		33	33	33
Argentine Basin	Argentina/Mar Del Plata	Global				24	24		24	24	24
Pacific											
Regional Scale Nodes	JDF/Seattle	Global+ROV	14			64	59		40	40	40
Station Papa	Gulf of Alaska/Seattle	Global			0	22	22		22	22	22
Southern Ocean	Chile (55°S)/Punta Arenas	Global					24		24	24	24
Endurance Array	Newport OR/Newport OR	Global+ROV		20	0	5	5		5	5	5
Endurance Array	Newport OR/Newport OR	Global				8	8		8	8	8
Endurance Array	Newport OR/Newport OR	Intermediate	3	12	15	8	16		20	20	20
Endurance Array	Newport OR/Newport OR	< 80 ft.				54	54		54	54	54
Global testing		Intermediate	0								
		Global	0								
Total by vessel class											
UNOLS		Global	0	0	7	111	135		135	135	135
		Global+ROV	14	20	0	69	64		45	45	45
		Intermediate	3	19	22	8	16		20	20	20
		< 80 ft.	0	0	4	66	66		66	66	66

* 14 OOI Global & ROV days combined with 15 UW funded days

** 2011 Endurance 20 Global days are funded by UW and ROV funded by OOI