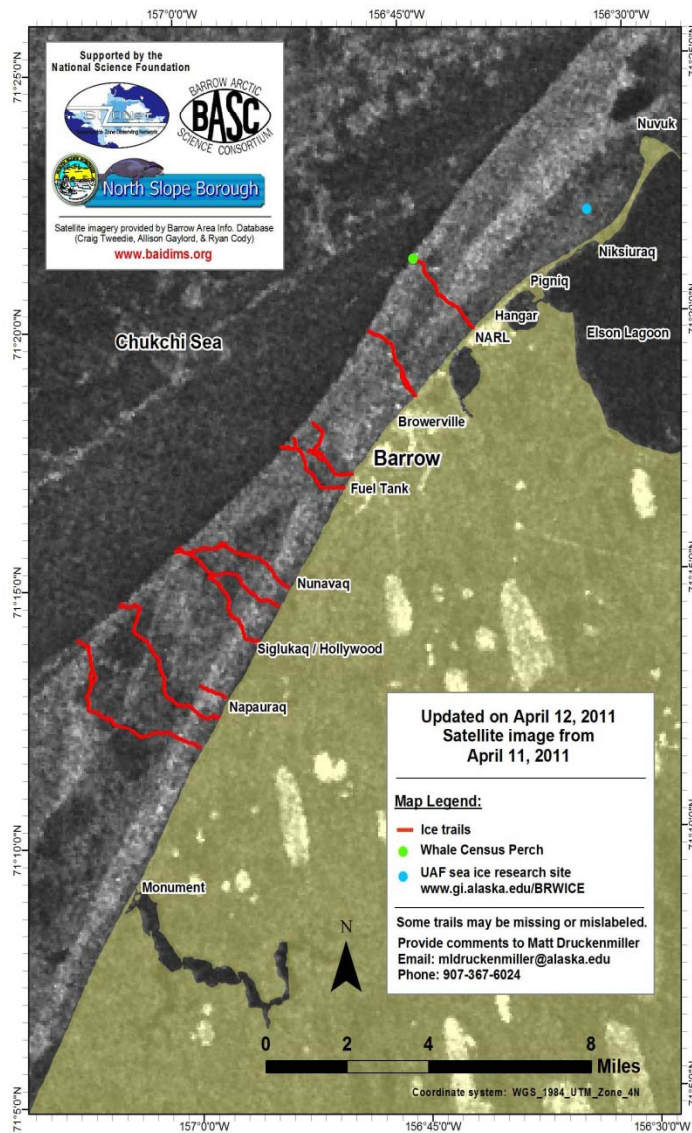


AICC April 20,21, 2011

P. McGillivray: CG Native Outreach Issues

Spring 2011 Ice Trails - Barrow, Alaska

Produced by: Matt Druckenmiller, University of Alaska Fairbanks
 Craig George, NSB Dept. of Wildlife Management
 Lewis Brower, Barrow Arctic Science Consortium



- Prior POLAR SEA cruise report from 2009 Coffin cruise briefed to AEWC posted at ftp site, <https://ftp.polarscience.net/> User pword 'forhealy' is case sensitive. Three additional papers in press added when published.
- Only CG icebreaker cruise requiring AEWC coordination is Pickart's. Kate Stafford briefed AEWC in February, will brief again in July. Native participant selection coordination by Faustine Mercer and/or Josh Bacon of PFS.
- Ray Barnhardt (UAF) has grad student program in native knowledge and science & offered to assist w/ participant selection: PH 907-474-1902; email: ffrijb@uaf.edu . Ron Brower at UAF has volunteered as participant for summer 2011, email: rbrower@uaf.edu, PH 907-474-6608.
- NOAA/PMEL will coordinate w AEWC for planned WaveGlider deployment/recovery from ANNIKA MARIE out of Prudhoe Bay Aug.1/Sept.15, to be done 20 mi offshore. Jim Overland will coordinate w AEWC.