

UNOLS

SHIP SCHEDULING REPORT UNOLS COUNCIL MEETING MARCH 7-8, 2011



UNOLS Ship Scheduling Committee

Stewart Lamerdin (MLML) - Committee Chair
(Term 11/10-10/13)

Committee Vice Chair- Vacant

- Rose Dufour and Liz Brenner (both from SIO) have agreed to fill the Vice Chair's vacancy
- The nominees have received unanimous support from all Ship Scheduler's
- We are requesting the Council's endorsement on the proposed appointment

2012 UNOLS Fleet Scheduling & Planning

January 26 & 27, 2011

- Global Ship Schedulers met with NSF, ONR,NOAA reps in San Diego
- First Cut at 2012 schedule options with Agency input on priorities.
- Letters of Intent developed for Globals

February- May

- Schedulers working on letters of intent, funding decisions.

June-September

- Begin Ship Scheduler's Conference Calls-

Late Summer 2011- Scheduling Meeting at NSF- to be

Estimated 2012 Fleet Utilization

Total Funded Days: 1401

Total Pending & To Be Submitted: 1834

Funded Days by Class:

Globals- 901 days

Atlantic Explorer-109

East Coast Intermediate & Regional- 157

West Coast Intermediate & Regional-77

Local Ship- 157

(Numbers are accurate as of February 24, 2011)

OOI Estimated Ship Days for UNOLS Fleet (inclusive of DAS, transit, mob/demob) - January 4 2011 Update

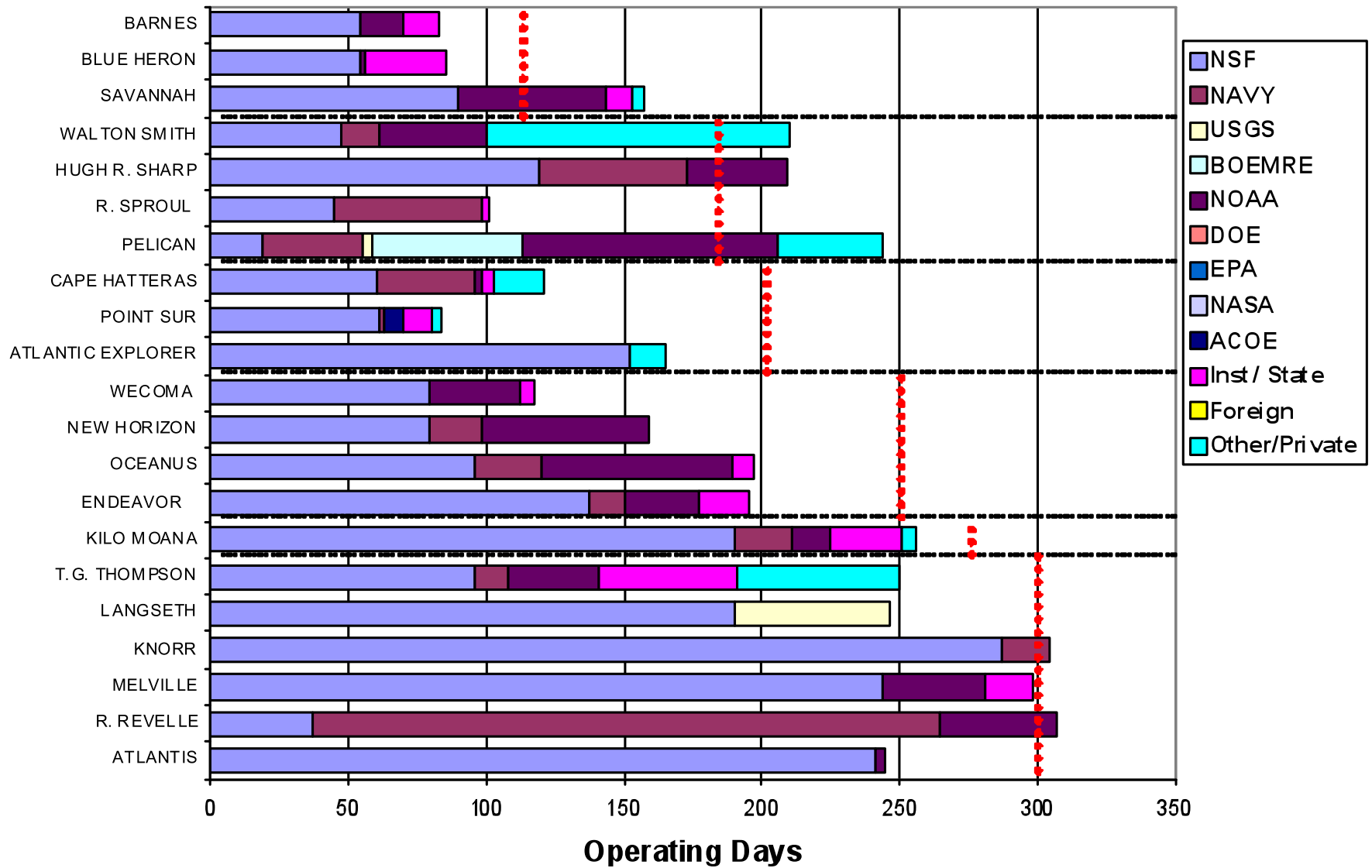
Days by year

Infrastructure	Location/Requested Start port	Vessel Class	Actual					2015	2016	2017
			2010 Construction	2011	2012	2013	2014			
Atlantic										
Pioneer Array	Mid Atlantic Bight/WHOI	Global				24	24	24	24	24
Pioneer Array	Mid Atlantic Bight/WHOI	Intermediate		14						
Pioneer Array	Mid Atlantic Bight/WHOI	< 80 ft.			4	12	12	12	12	12
Irminger Sea	Greenland/WHOI	Global				33	33	33	33	33
Argentine Basin	Argentina/Mar Del Plata	Global				24	24	24	24	24
Pacific										
Regional Scale Nodes	JDF/Seattle	Global+ROV	14			64	59	40	40	40
Station Papa	Gulf of Alaska/Seattle	Global			0	22	22	22	22	22
Southern Ocean	Chile (55°S)/Punta Arenas	Global					24	24	24	24
Endurance Array	Newport OR/Newport OR	Global+ROV		0	0	5	5	5	5	5
Endurance Array	Newport OR/Newport OR	Global				8	8	8	8	8
Endurance Array	Newport OR/Newport OR	Intermediate	3	12	15	8	16	20	20	20
Endurance Array	Newport OR/Newport OR	< 80 ft.				54	54	54	54	54
Global testing		Intermediate	0							
		Global	0							
Total by vessel class										
UNOLS		Global	0	0	0	111	135	135	135	135
		Global+ROV	14	0	0	69	64	45	45	45
		Intermediate	3	26	15	8	16	20	20	20
		< 80 ft.	0	0	4	66	66	66	66	66

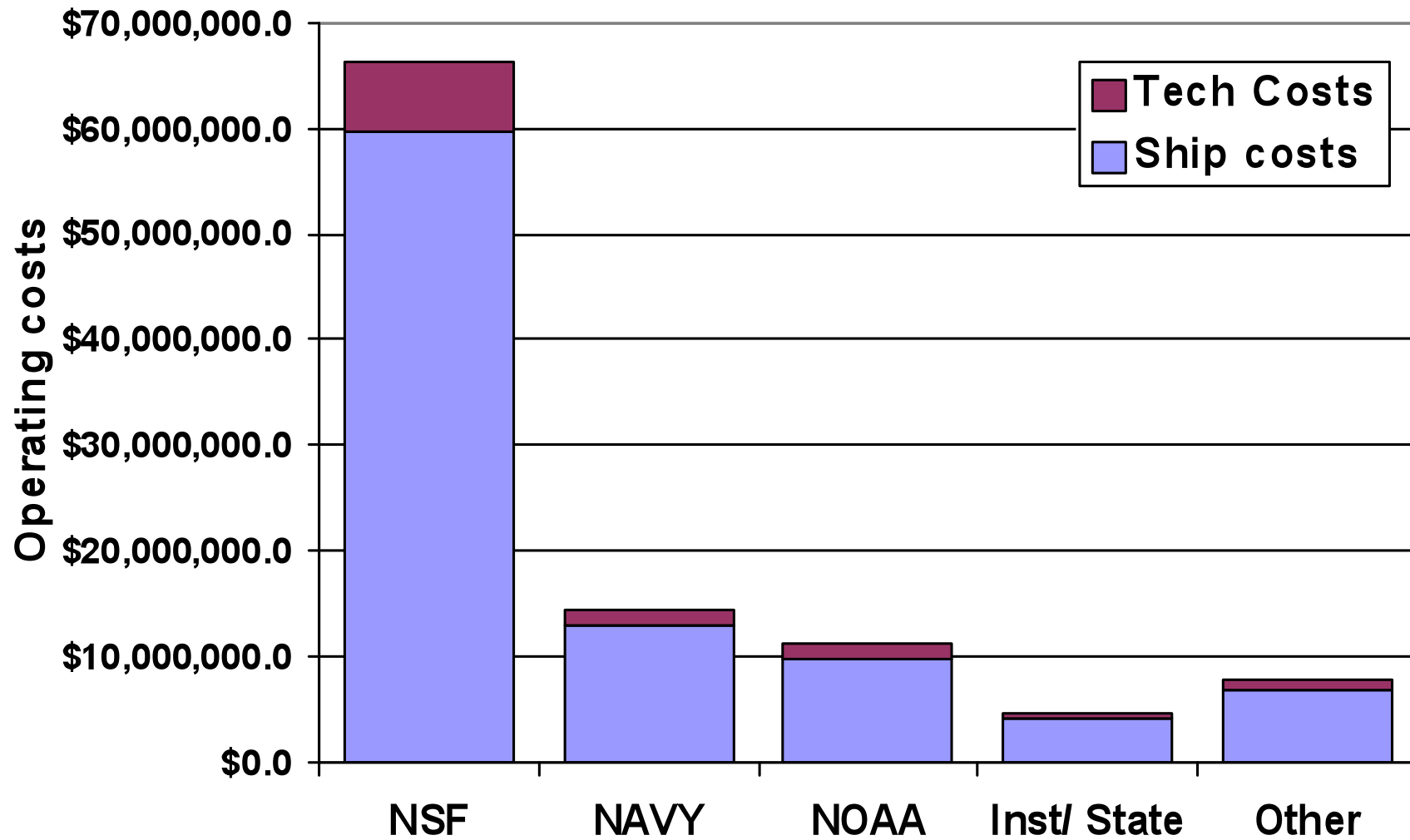
* 14 OOI Global & ROV days combined with 15 UW funded days

Estimated ship days for installation and annual operation and maintenance (O&M) of OOI infrastructure. The approximate range for length overall (LOA) of the classes of vessels is as follows: Global 235-280 ft. LOA; Intermediate 170-200 ft. LOA; Coastal 66-100 ft. LOA.

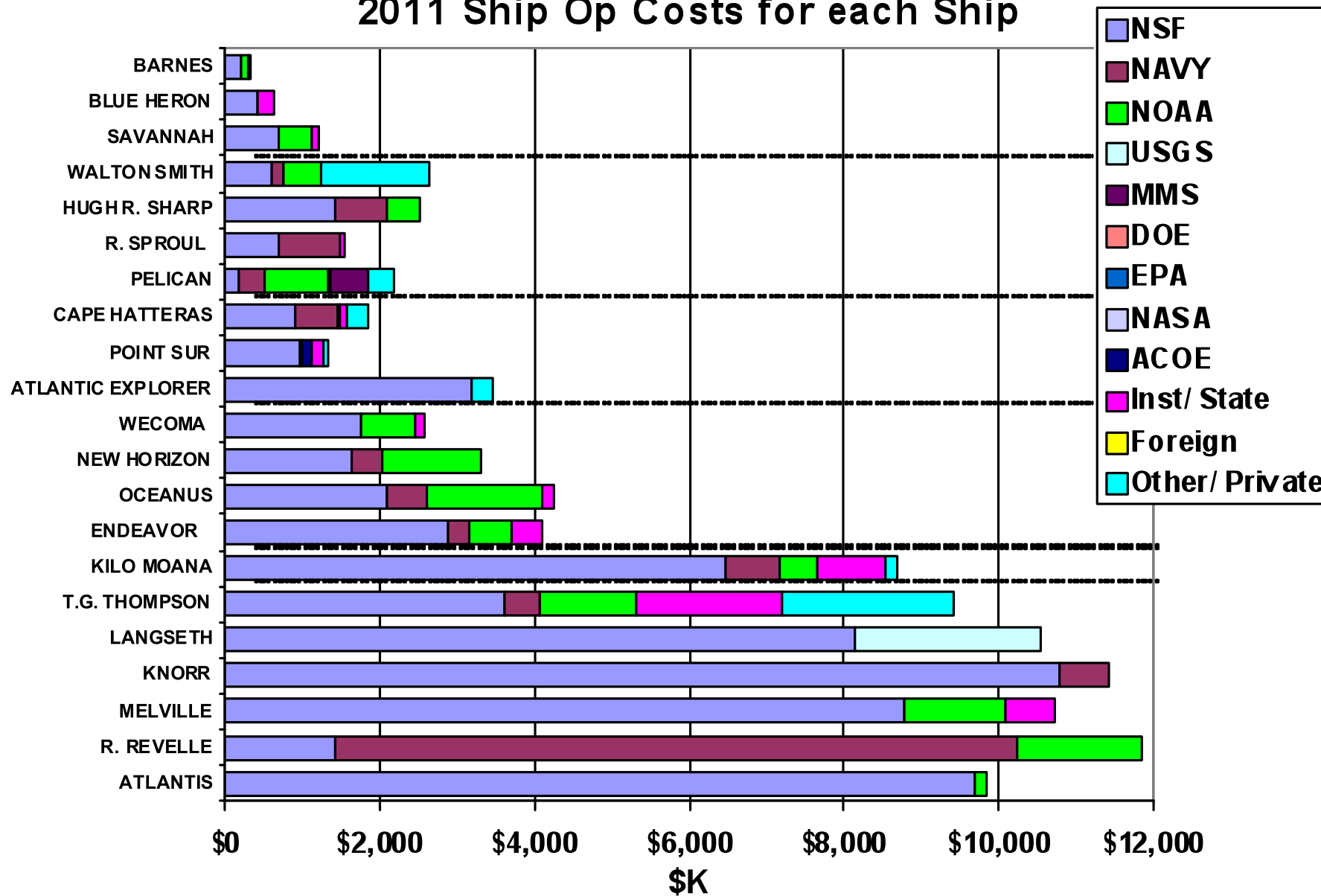
2011 Schedules



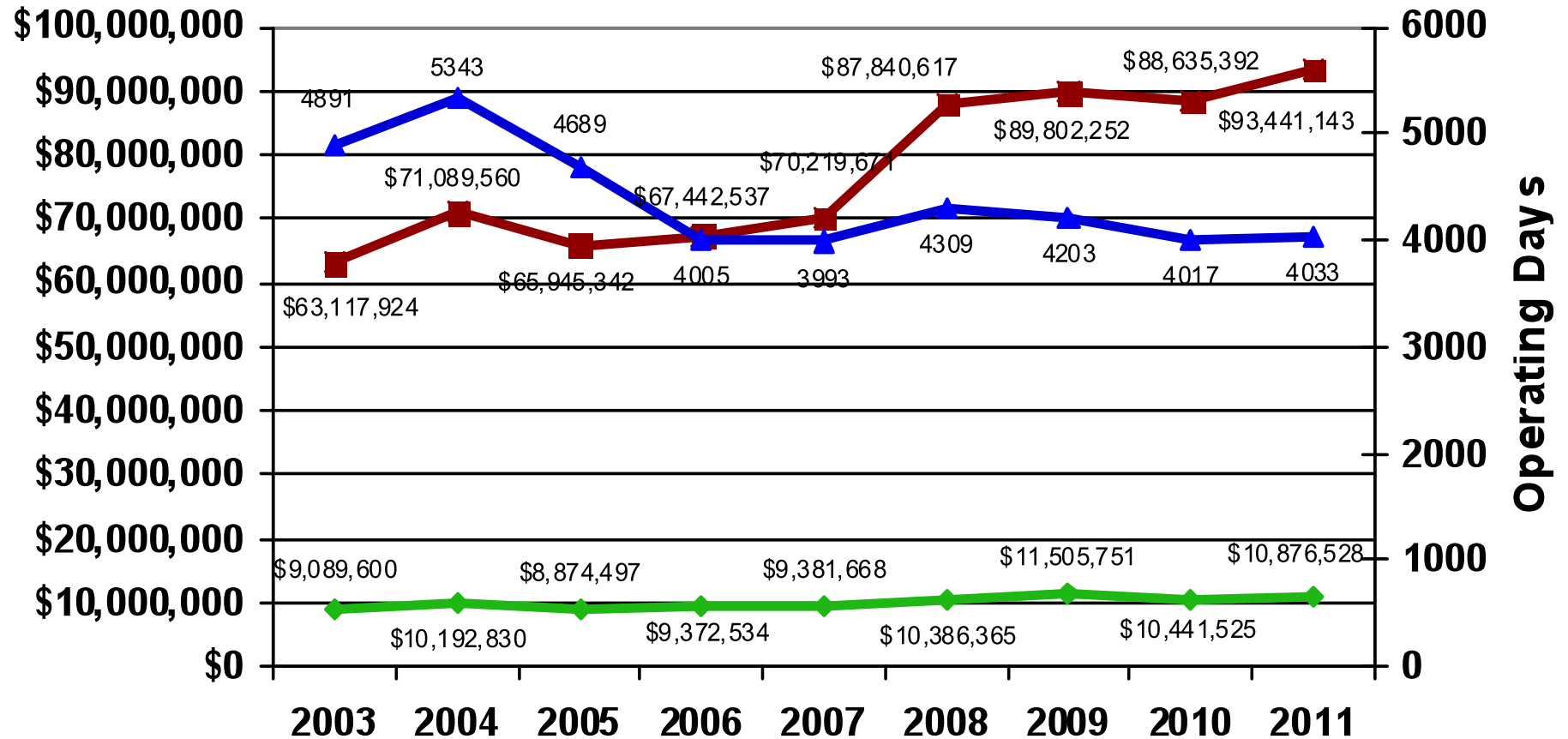
2011 Ship Op Costs by Agency



2011 Ship Op Costs for each Ship



2003-2011 Fleet Operating Days and Costs



■ Total Ship Op Costs
 ◆ Total Tech Support Costs
 ▲ Total Operating Days