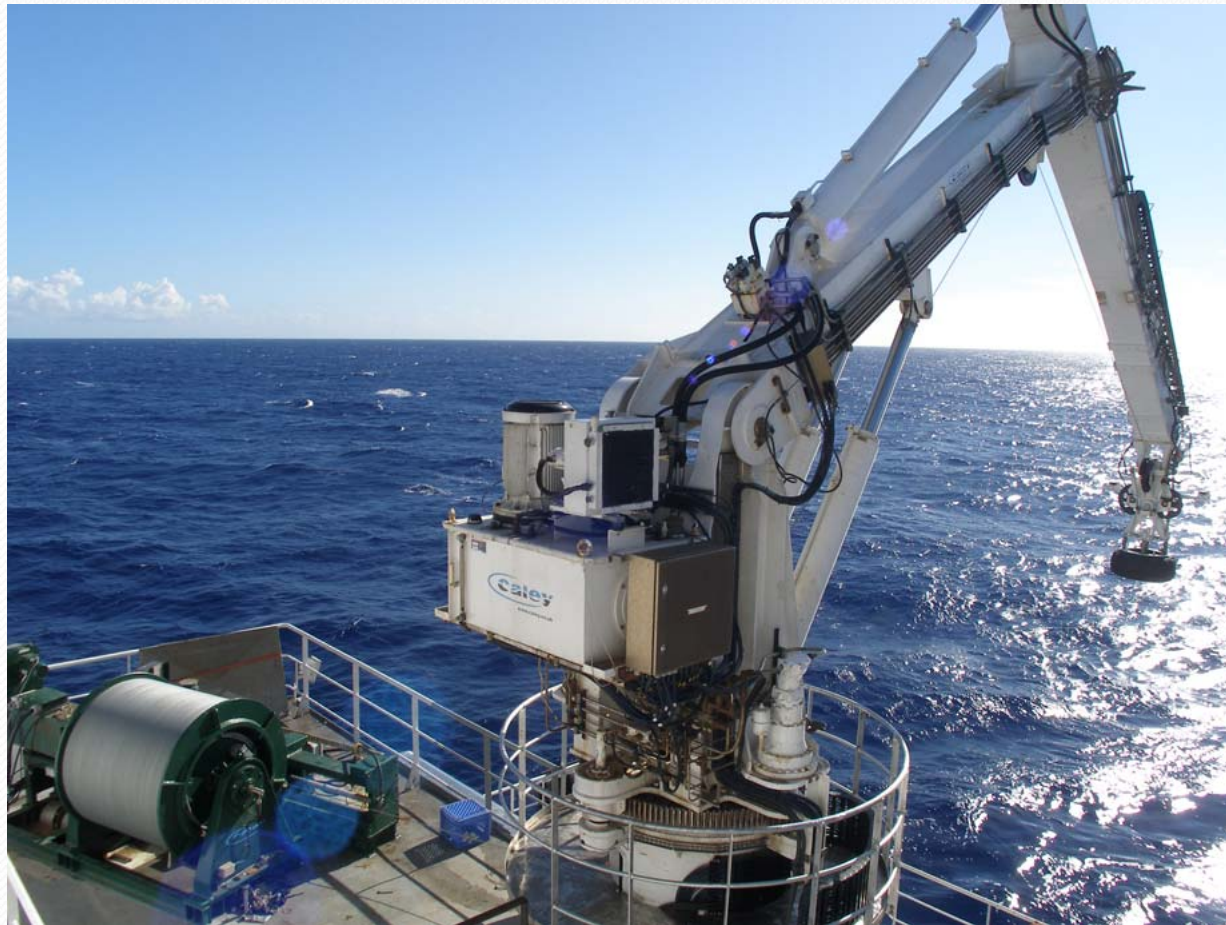


# R/V Kilo Moana Load Handling System

UNOLS Fleet Improvement Committee Meeting  
October 13, 2010

Alexander Shor, Associate Dean for Research  
Timothy McGovern, Director, Ocean Technology Group  
University of Hawaii

# System Overview





# System Overview



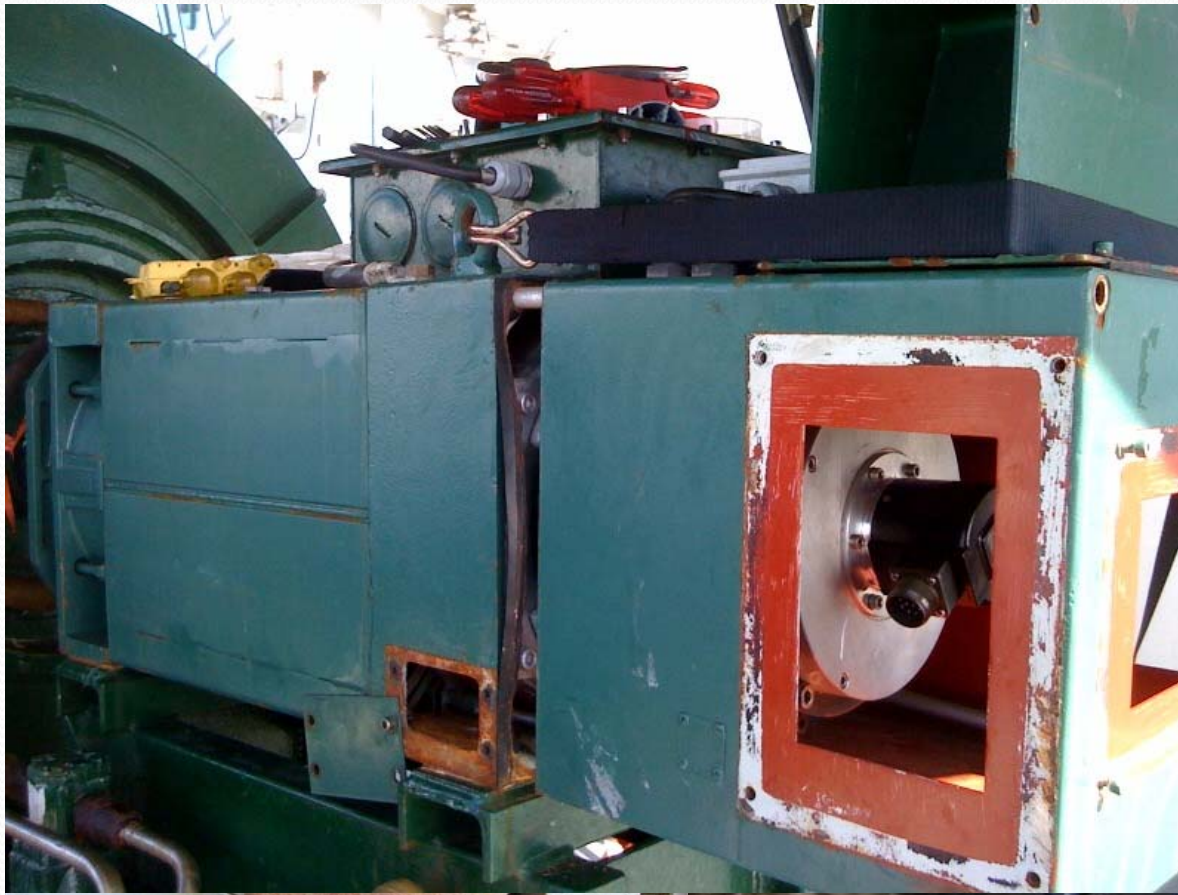


# Casualties

- R/V Kilo Moana suffered a CTD winch casualty at approximately 2145 local time on 17 March 2010.
- At the time the ship was conducting the William Chadwick (Jason) cruise off Guam.
- During CTD operations, the Caley CTD Winch–Crane System shut down. When the operator hit the reset button, there was a power surge of unknown origin on the ship’s electrical system which resulted in a total loss of ship’s electrical power.
- Ships power was restored in about 15 minutes. The CTD was recovered and ships systems were returned to normal status with the exception of the CTD winch and the bow thruster.
- An analysis of what caused the power surge and what was needed to repair the casualty began immediately.



# Damage





# Repairs & Modifications



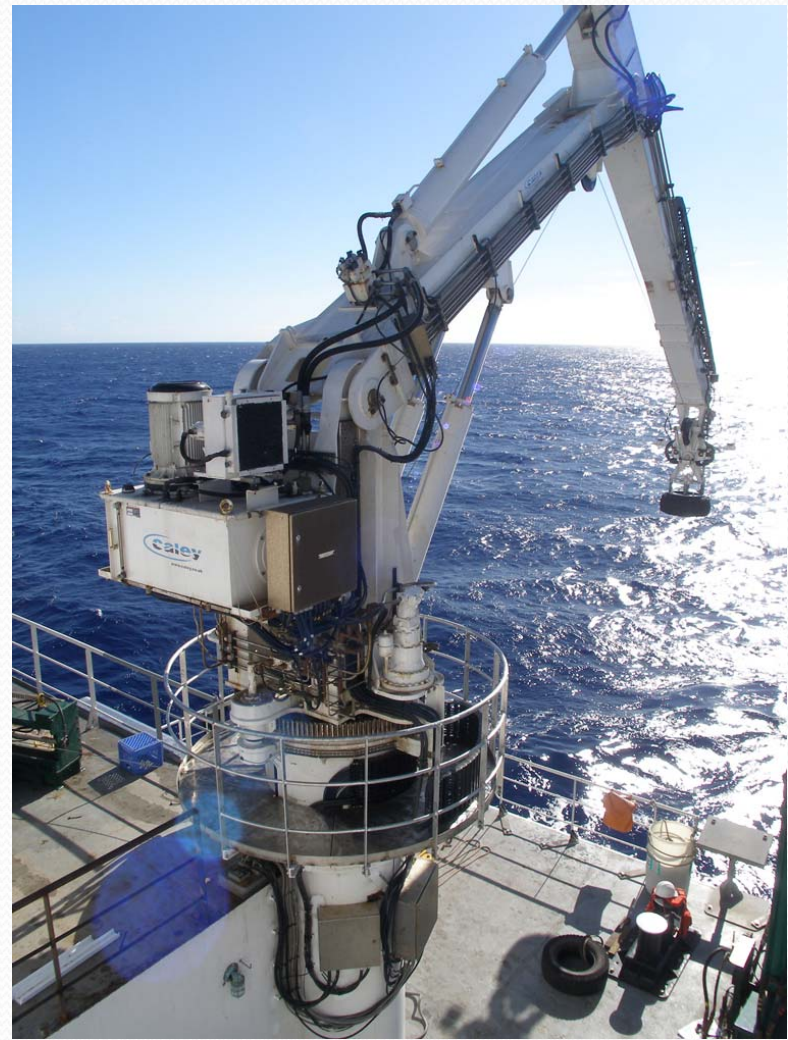


# Repairs & Modifications



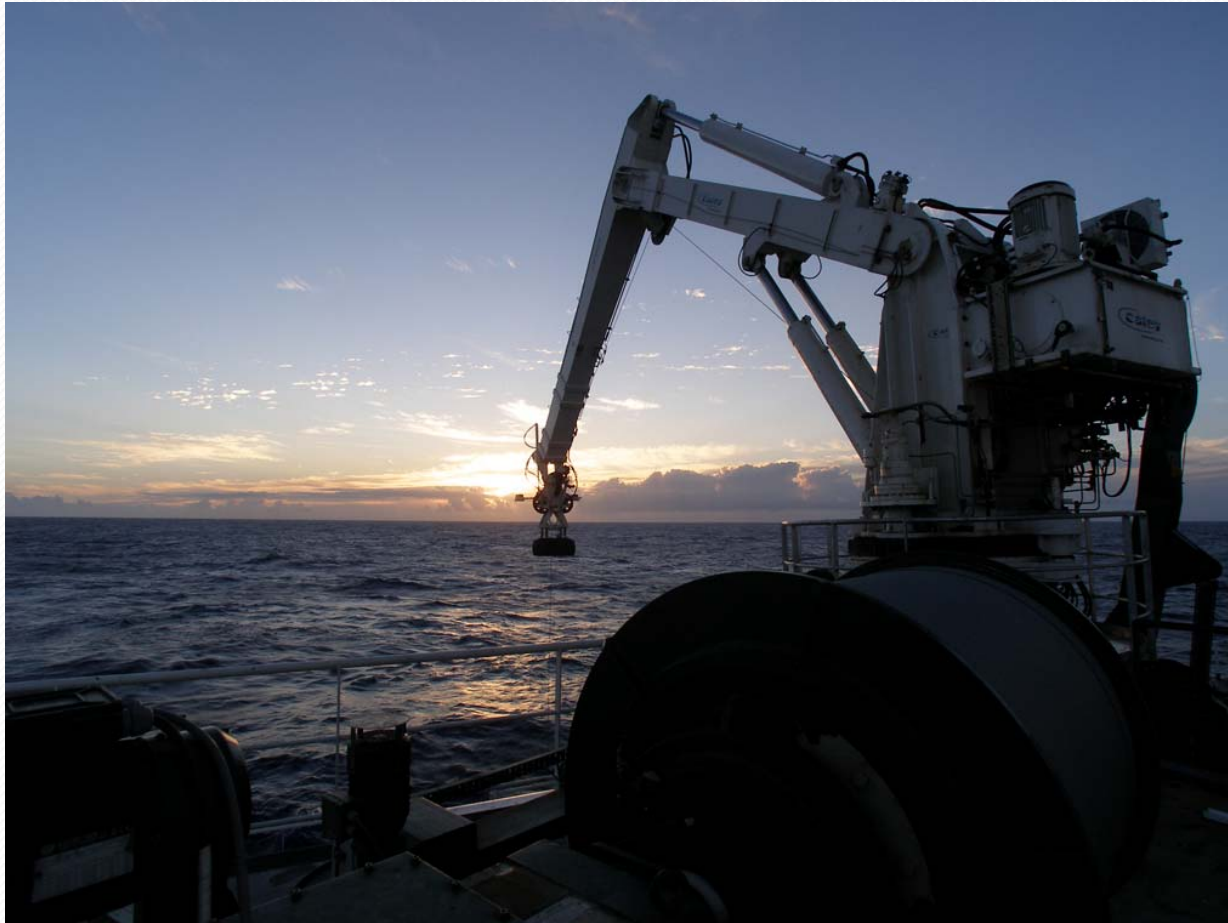


# Current Status





# Future Plans



# Thanks!







Questions?