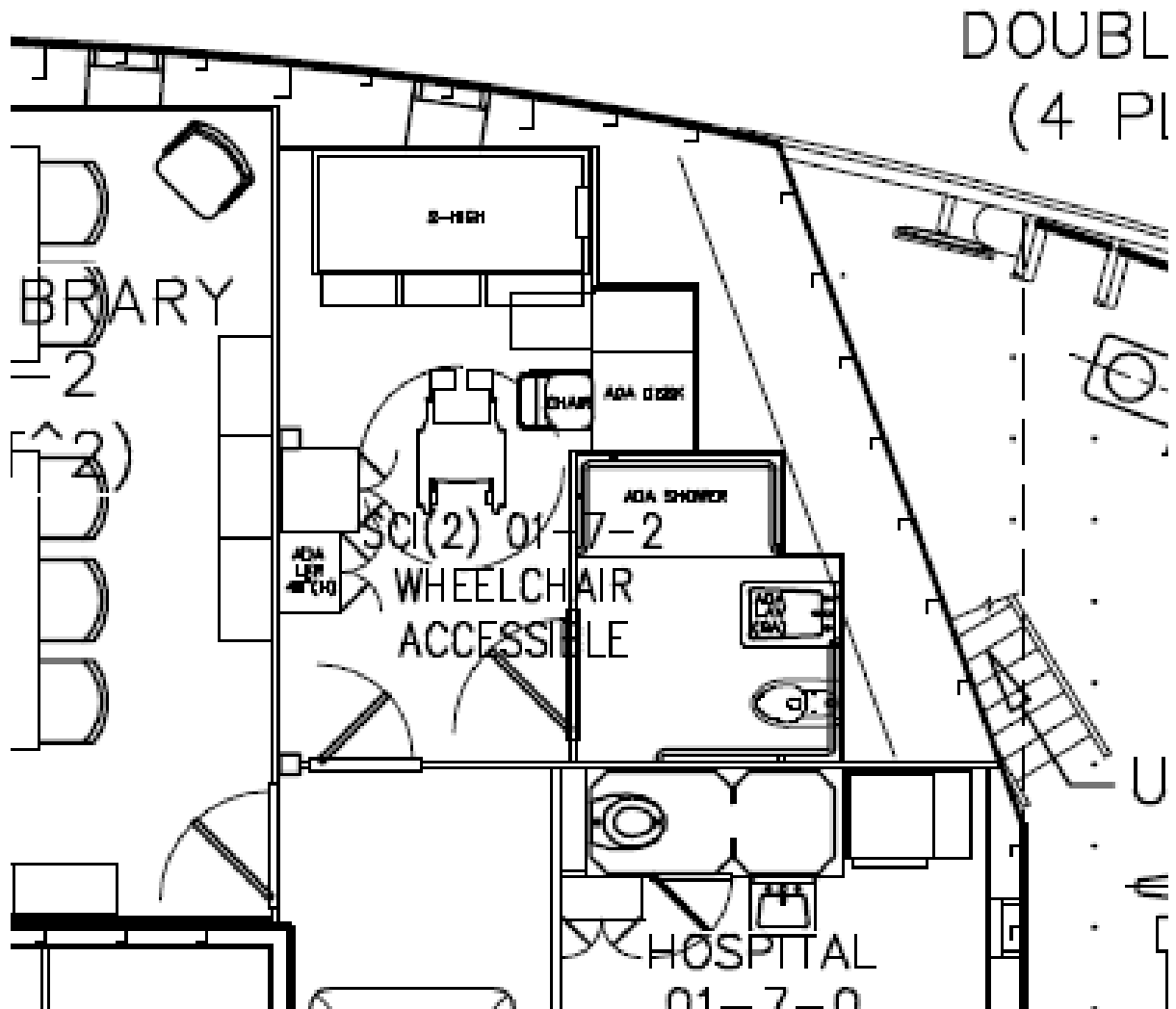


ADA Compliance Summary for 13 October Fleet Improvement Committee Meeting

ADA compliance considerations were made in the SIKULIAQ design during its development. The "ADA Guidelines for UNOLS Vessels dated 7 January 2008" is referenced throughout the SIKULIAQ specifications as a requirement in addition to wheel chair access requirements being shown in various spaces on the general arrangements. Attached at the end of this is an excerpt from ARRV Design Notebook dated 19 September 2008 that provides an ADA overview of the SIKULIAQ design. The Design Notebook was provided as part of the project's Final Design Review.

Below is an arrangement drawing of the wheelchair accessible science stateroom from the most recent version of SIKULIAQ's General Arrangement drawing.



In addition to full scale mockups of all the labs, the pilothouse, and science conning station, the wheelchair accessible stateroom has been mocked up full scale. The project team is making arrangements with Dr. Dave Glover, a handicapped scientists from WHOI who was part of the development team for the 7 January 2008 ADA Guidelines for UNOLS Vessels, to come to the shipyard and go through the mock ups. His review will help the project catch problems with disability issues in the wheelchair accessible stateroom and labs.

## Excerpt from ARRV Design Notebook

### ADA Overview

The ARRV has incorporated design attributes that will make the ship ADA compatible wherever possible. This includes one scientist stateroom that is ADA compliant.

- ADA access to all laboratories and living spaces on main deck and O1 level
- Access between decks via personnel rated elevator
- Passageways with 48 inch clearance and turning radius for hatches
- Handrails on both sides of passageways
- Recessed emergency stations in passageways
- ADA stateroom with head/shower with approved fixtures and clearance distances
- ADA compliant head and drinking fountain on main deck level
- Mess deck and lounge provided with furniture for wheel chair clearance
- Meal service and drinks station with acceptable reach heights
- Adjustable height benches in computer and main laboratories
- Wheel “catchers” in stateroom, mess deck, lounge and main laboratory to secure wheelchair
- Wheel chair access to climate control chamber and science freezer
- Wheel chair access to back deck via lay down sill/ramp on watertight hatch
- Wheel chair access countertops and sinks in the labs
- Portable warning package (strobe light, wiggler, bed vibrator) for stateroom to signal ship emergencies
- Convenient locations of light switches, temperature controls, fire alarms, and outlets in ADA accessible spaces
- Use of large format for signs.
- Additional signage on main deck and O1 deck to include use of grade II brail
- Automatic door openers on common access doors
- Wiggler device to alert hearing impaired of emergencies
- Handrails on both sides of stairwells and open deck ladders
- Stair edges painted in a bright color such as yellow
- Trip hazards painted a bright color such as yellow
- Brightly colored tactile strips installed at the top and bottom of all inclined ladders
- Adjustable lighting in stateroom and main laboratory
- Low reach heights/line-of-sight for laboratory instrument panels
- High contrast computer screen for sight impaired
- Gangplank and/or personnel rated crane bucket to board vessel
- Use of the UNOLS ADA Guidelines in the specifications