



Post Cruise Assessment Report (PCAR) Subcommittee

Status report on current activities



UNOLS

POST CRUISE ASSESSMENT REPORT (PCAR)

Subcommittee

MEMBERS

Bob Collier/OSU- resigned in September

Joe Malbrough/LUMCON

Wilf Gardner/TAMU

Dave Fisichella/WHOI

CHARGE

Committee's goal is assure that communications intended by the PCAR process remain effective. Report back on high-level trends and issues that might need to be addressed by the broader community in the interest of improving quality of the seagoing operation.

UNOLS Council/Annual October 14-15, 2010



PCAR

- UNOLS increased the effort from the UNOLS office to ‘extract’ missing forms: sent letters directly to the Chief Scientists
- This was effective, especially for vessels with anomalously low return rates. Causes included absent-mindedness or professed confusion. The suggestion that funding program officer may note the absence of a submission may have helped
- Committee received PCAR forms for *Thompson*, *Revelle*, *Knorr* and *Kilo Moana* & In-depth review was conducted



Status – Distribution and Use

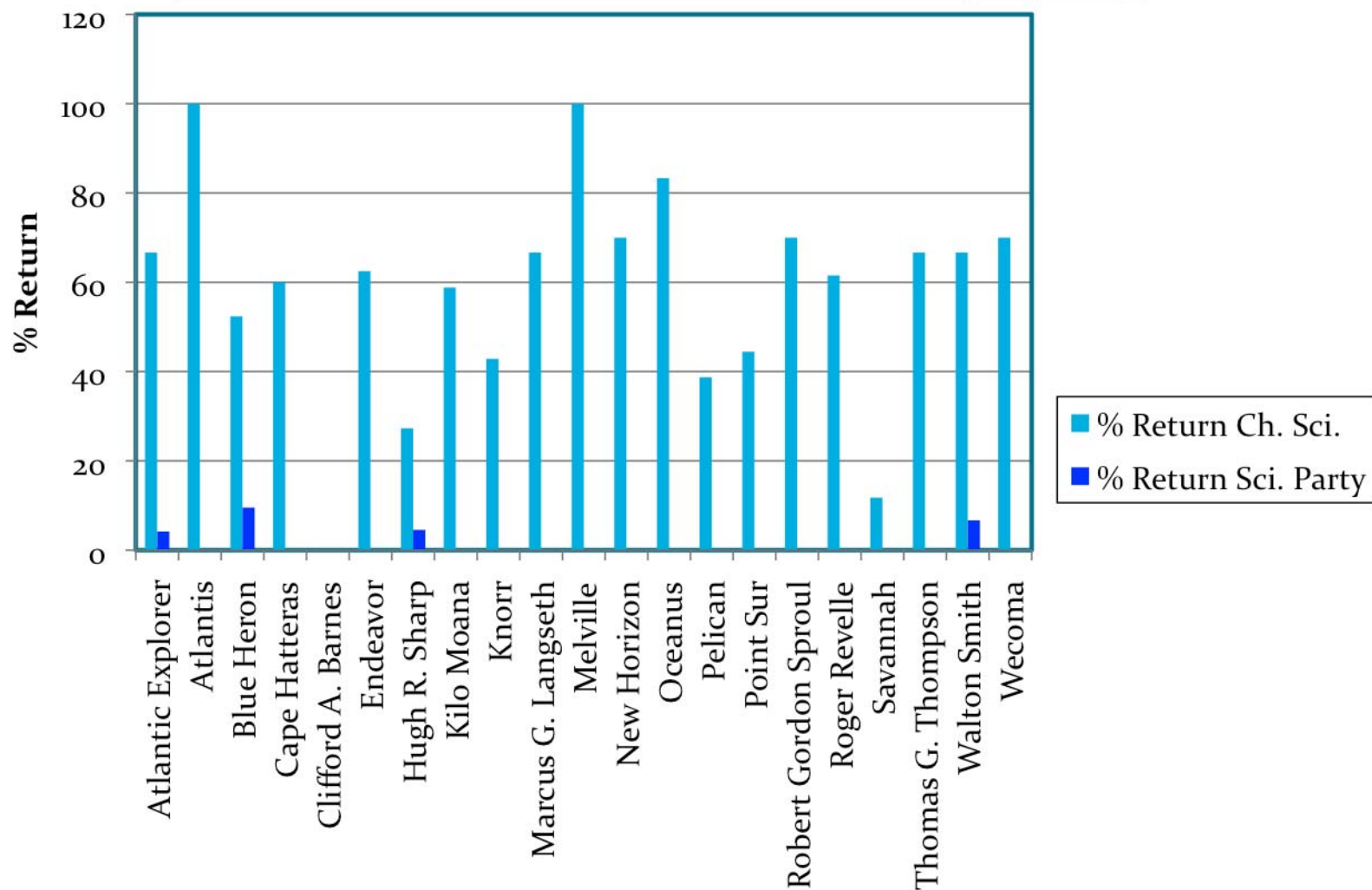
- UNOLS Office – Receives, reviews, reports out and archives all PCAR.
- UNOLS Exec Sec call the Marine Supt. Or the Ch. Sci to get “the rest of the story” and then discusses with the funding agency program office.
- Other copies distributed: Marine Ops Office, PI & submitter, Agencies.
- NSF – Linda Goad and Bob Houtman receive & review.
 - If there are any issues, Linda sends them to sponsoring NSF Program Manager, including Matt Hawkins and Jim Holik, Contact/follow-up with Marine Office.
- ONR – Tim Schnoor receives and reviews then forwards to the ONR sponsoring program officer

To date, no complaints or suggestions to modify distribution.



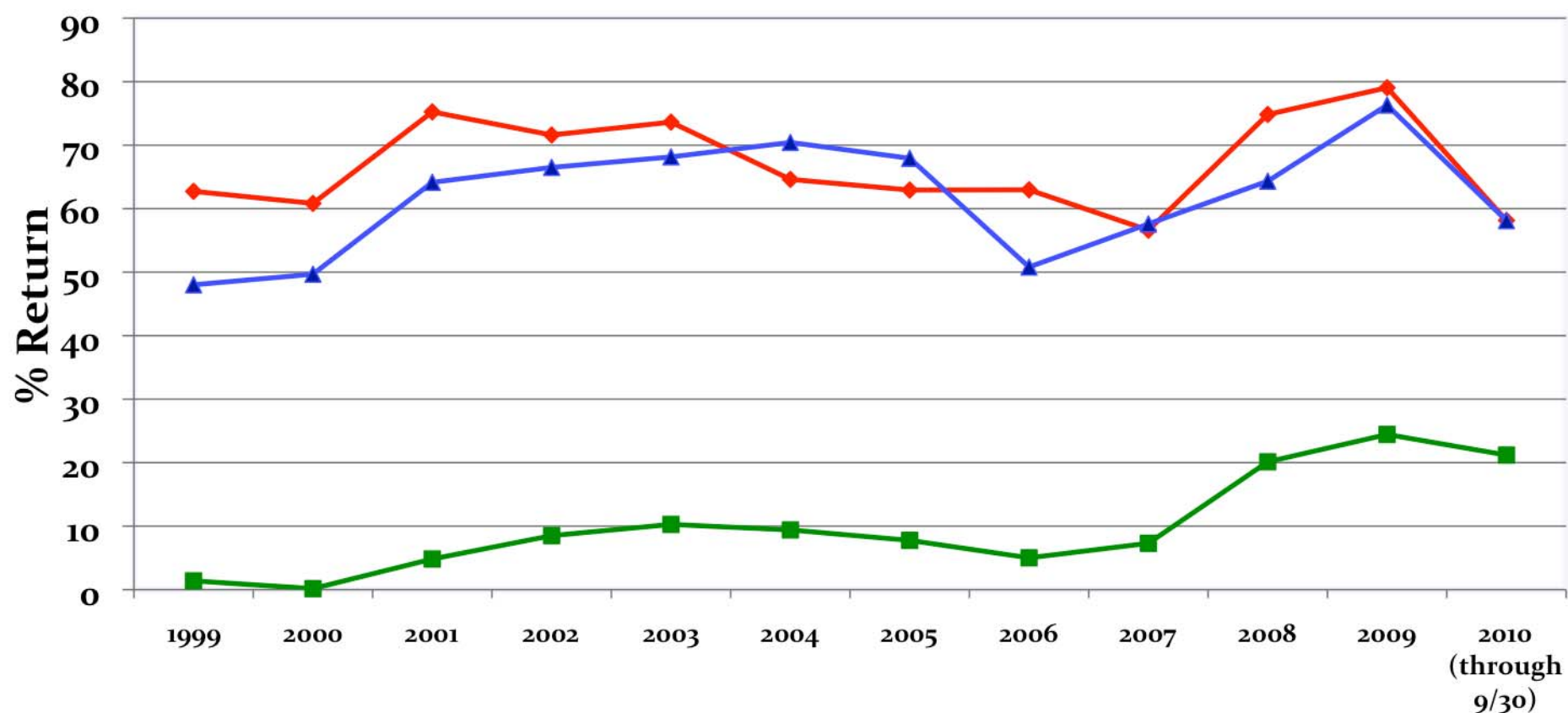
PCARs – Fleet Statistics (2010)

% Return: Chief Scientists and Science Party, by Ship





Fleet Percent Return for Post Cruise Assessments 1999-2010



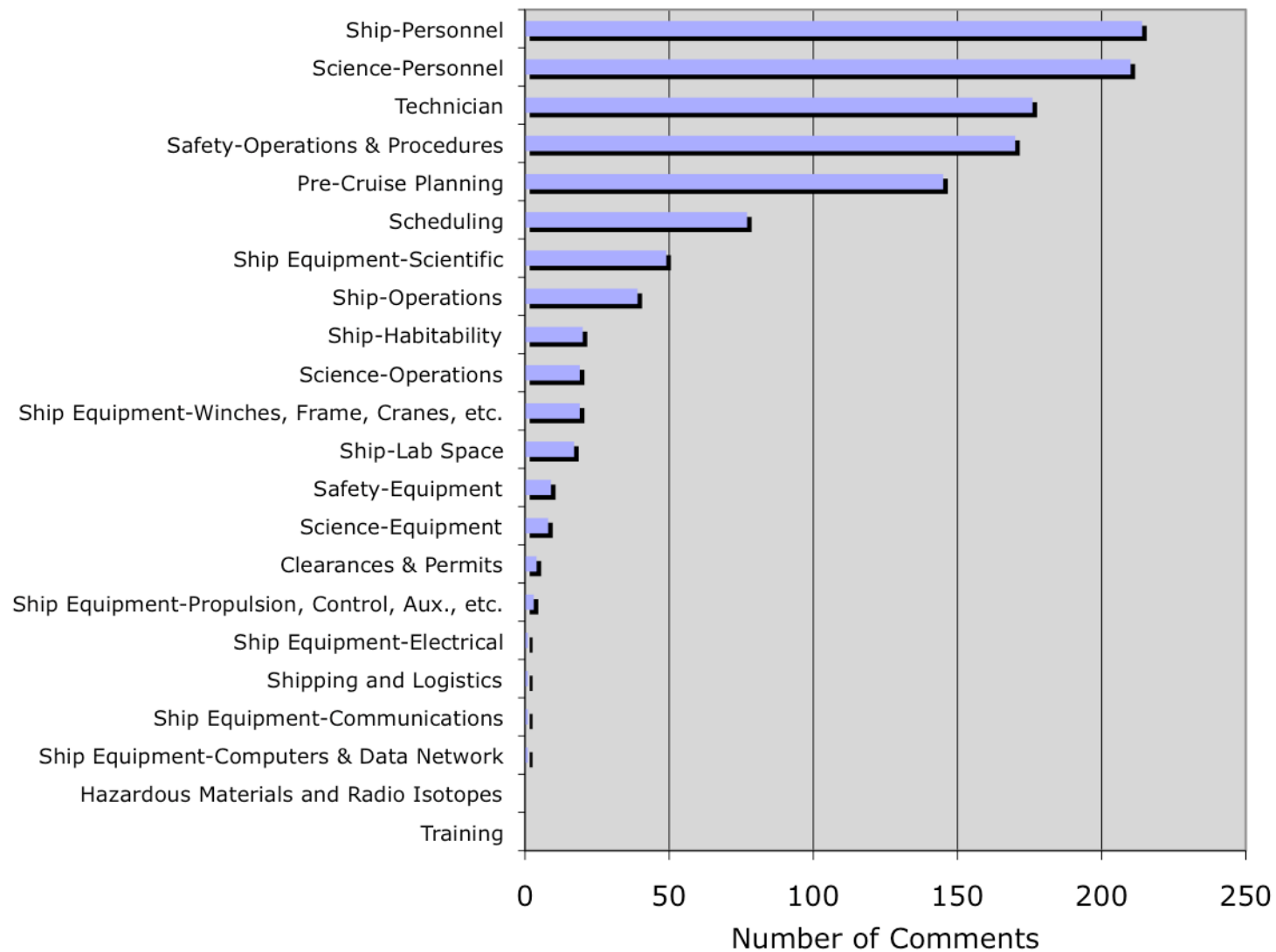
—◆— Captain

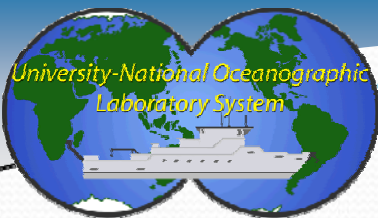
—■— Technician

—▲— Chief Scientist

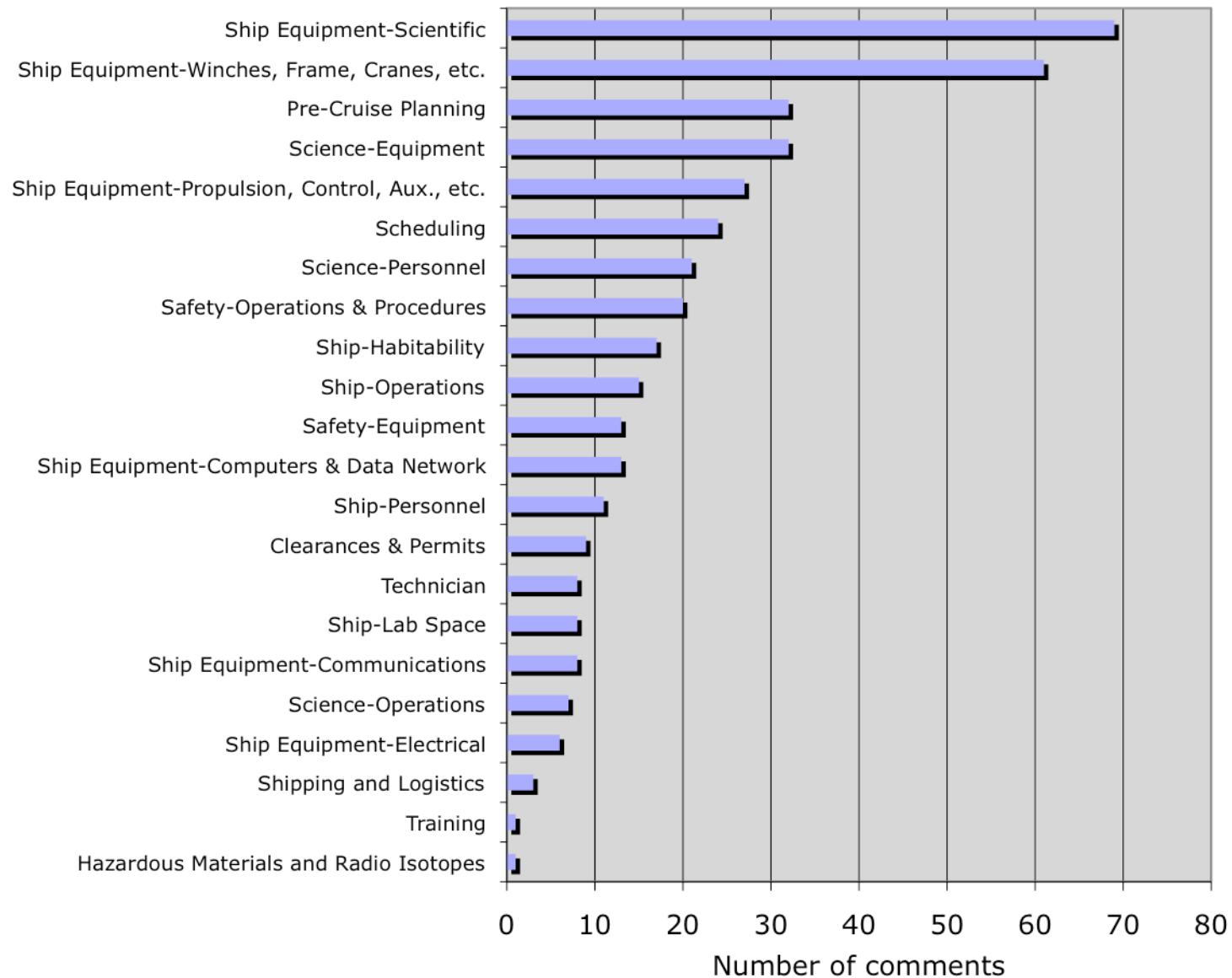


Positive Comments





Suggestions





In support of Council's PCAR review committee:

- PCAR packages are distributed with summary statistics from the database (these are the same data used for the fleet-wide reports):

R/V Kilo Moana
Summary of Reports Turned In and Success Rates
for 2008 and 2009

Reports Turned in for 2009 # of cruises:	Number of Reports Turned In:			Percentage of Cruises with Reports Turned In:	Total Number / Percentage of Cruises with Reports Turned In For UNOLS Fleet:
	Paper	New Online	Total		
Captain		21		95.45 %	316 / 78.80 %
Chief Scientist		18		81.82 %	301 / 75.06 %
Marine Technician		20		90.91 %	98 / 24.44 %
Science Party		0		0.00 %	5 / 1.25 %

Reports Turned in for 2008 # of cruises:	Number of Reports Turned In:			Percentage of Cruises with Reports Turned In:	Total Number / Percentage of Cruises with Reports Turned In For UNOLS Fleet:
	Paper	New Online	Total		
Captain		20	20	95.24 %	342 / 74.84 %
Chief Scientist		17	17	80.85 %	294 / 64.33 %
Marine Technician		18	18	85.71 %	92 / 20.13 %
Science Party		0	0	0.00 %	7 / 1.53 %

Cruise Success Ranges	Percentage of Reports in Range:		Percentage of Reports in Range for UNOLS Fleet:	
	2009	2008	2009	2008
100% or More	42.03 %	40.68 %	57.03%	59.19%
75% - 99%	56.52 %	54.24%	33.51%	30.45%
50% - 74%	0.00 %	0.00 %	3.81%	2.10%
25% - 49%	0.00 %	0.00 %	0.53%	1.57%
Less Than 25%	0.00 %	5.08 %	0.92%	1.18%
No Response	1.45 %	0.00 %	4.20%	5.51%



Comparison between fleet & ship – Quality of Service

These numbers are obtained when Post Cruise Assessments are read and have comments that pertain to the areas of interest below.

Comment Type	Kilo Moana		Total Number For Fleet	
	Positive Comments	Suggestions	Positive Comments	Suggestions
Clearances & Permits	0	0	4	9
Hazardous Materials and Radio Isotopes	0	0	0	1
Pre-Cruise Planning	32	4	145	32
Safety-Equipment	1	3	9	13
Safety-Operation & Procedures	31	2	170	20
Scheduling	2	4	77	24
Science-Equipment	2	3	8	32
Science-Operations	5	1	19	7
Science-Personnel	33	3	210	21
Ship Equipment-Communications	0	2	1	8
Ship Equipment-Computers & Data Network	0	1	1	13
Ship Equipment-Electrical	0	0	1	6
Ship Equipment-Propulsion, Control, Aux, etc.	0	4	3	27
Ship Equipment-Scientific	12	4	49	69
Ship Equipment-Winches, Frame, Cranes, etc.	1	19	19	61
Ship-Habitability	5	2	20	17
Ship-Lab Space	2	0	17	8
Ship-Operations	10	1	39	15
Ship-Personnel	34	0	214	11
Shipping and Logistics	0	0	1	3
Technician	33	0	176	8
Training	0	0	0	1



PCAR Report on Globals

Knorr, Thompson, Kilo Moana, and Revelle in depth review of PCARS in 2009

Knorr

- Chief Scientists rate of return 70 %- (Fleet Average- 75%)
- Captain rate of return 100 %- (Fleet Average- 79%)
- Included transits- Are transit PCAR's helpful ?
- Marine Technicians- none submitted
- All ratings on all topics were ranked "average or better".
- No Negative comments



PCAR Report on Globals

Thompson

- Chief Scientist- rate of return 50 %- Fleet Average 75%
- Captain's Rate of return 83%- Fleet Average 79%
- Mostly “excellent ratings” with little explanatory text
- Suggestions related to Science Equipment- 12.5 %
- Too few reports submitted to state any systemic problems of discernible trends.
- Most comments favorable-
- Some reported on concern of impact in loss of key people within Marine Group



PCAR Report on Globals

Thompson - Continued

- One Chief Scientist report rated everything “above average” after describing the loss of a CTD- interesting.....
- Possible suggestions for improving process: remove “Below Average, Average, ratings etc. and use a comment box.
- Also consider reports are submitted to UNOLS and then comments be transmitted anonymously. This may increase response rate as well as quality of information.
- Also suggested that individual operators contact PIs to gather feedback.



PCAR Report on Globals

Kilo Moana

- Captain, Ch. Sci. & Marine Tech submit forms faithfully.
- Captains- much less text- Suggestion- Self Reporting sections should be left blank or marked N/A.
- Marine Techs reporting rate much higher than fleet average, information is useful.
- Cruise Success- 42% of cruises were 100% successful- Fleet average is 58%, but higher combined values of 97% were in the 75% to 100% range.
- High number of positive safety comments
- Some negative comments on number of available berths, especially during ROV cruises. Not enough bunks left for science party
- Over-the-side operations difficult other than at the stern, but aft deck has limited space.



PATH FORWARD

- Continue reviews – move on to next class.
- Start using: http://strs.unols.org/members/diu_pca_edit.aspx
vs. <http://www.gso.uri.edu/cgi-bin/pcget.cgi>
- The Captain's use of form – little useful data.
- The Tech use of the form – very very low %, anonymity cited.
- Timely returns – it often takes significant pressure from the office. Since these are reviewed when received for safety issues which need immediate attention, late forms make this less effective