



# UNOLS Year in Review



# 3<sup>rd</sup> Large Facility Workshop



# NSF 3<sup>rd</sup> Large Facility Workshop

May 4-7 2010 in San Diego, CA

Linda Goad, NSF Program Director, Ship Operations

Florence Rabanal and Jean-Rene Roy, Large  
Facilities

Scripps Institution of Oceanography/Marine  
Operations

UNOLS Office- Organizing, Registering, Facilitating, Managing all Power  
Points Presentations, Billing and Invoicing, Distributing information and  
establishing e-mail list for dissemination of information after workshop.

110 Participants including representation from SIO, URI, OSU, WHOI,  
MLML, UDEL, DUKE



# NSF 3<sup>rd</sup> Large Facility Workshop

## Agenda Topics Included

Keynote Address- Dennis Nixon- “Cost of Complacency”

Safety on the Sea, Air, High Latitude, High Altitude, Ground and Underground

Recapitalization and Supply

Human Capital

Scheduling

Performance Goals and Measurement

Cybersecurity

Appropriations Law

Energy Supply and Alternate Sources

Green Technologies for the UNOLS Fleet and other NSF Facilities

Tours of MARFAC, including R/V New Horizon & R/V Sproul and the Scripps

Earthquake Engineering Laboratory



# Investigate the feasibility of a more flexible UNOLS



## Investigate the Feasibility of a more flexible UNOLS

### Summer Council July 2009 established a 2009 Goal

- “Investigate Ways that the UNOLS fleet could be more flexible”

### October Council 2009

- Formed the ad hoc committee with tasking-
- Investigate the problems and make recommendations
- Prepare a white paper addressing fleet opportunities, constraints & successful methods to engage new users and define how decisions are made regarding ship use.



# Flexible UNOLS

**Members:** Nancy Rabalais & Joe Malbrough (co-Chairs), Mary Jane Perry, Stan Winslow, Dennis Nixon, Debbie Steinberg, Agency Reps

Suggestion:

- Reinvigorate
- Questionnaire?



# Antarctic Research Vessel Coordination and UNOLS





# Antarctic Research Vessels and UNOLS

Ad hoc Committee: Vernon Asper, Robin Muench, Peter Wiebe

- Letter sent to NSF/OPP on 24 September 2010
- “A Suggested Approach and Offer of Support from the UNOLS Council Regarding Ship Acquisition, Operation, and Oversight of Future Southern Ocean Research Vessels”

UNOLS PRV Science Mission  
Requirements Refresh- UNOLS  
recently tasked to lead this effort



# Post Cruise Assessment Report (PCAR) Subcommittee



# UNOLS POST CRUISE ASSESSMENT REPORT (PCAR) Subcommittee

## MEMBERS

Bob Collier/OSU- resigned in September

Joe Malbrough/LUMCON

Wilf Gardner/TAMU – new Chair

Dave Fisichella/WHOI

## CHARGE

Committee's goal is assure that communications intended by the PCAR process remain effective. Report back on high-level trends and issues that might need to be addressed by the broader community in the interest of improving quality of the seagoing operation.

UNOLS Council/Annual October 14-15, 2010



## PCAR

- UNOLS increased the effort from the UNOLS office to ‘extract’ missing forms: sent letters directly to the Chief Scientists
- This was effective, especially for vessels with anomalously low return rates. Causes included absent-mindedness or professed confusion. The suggestion that funding program officer may note the absence of a submission may have helped
- Committee received PCAR forms for *Thompson*, *Revelle*, *Knorr* and *Kilo Moana* & in-depth review was conducted



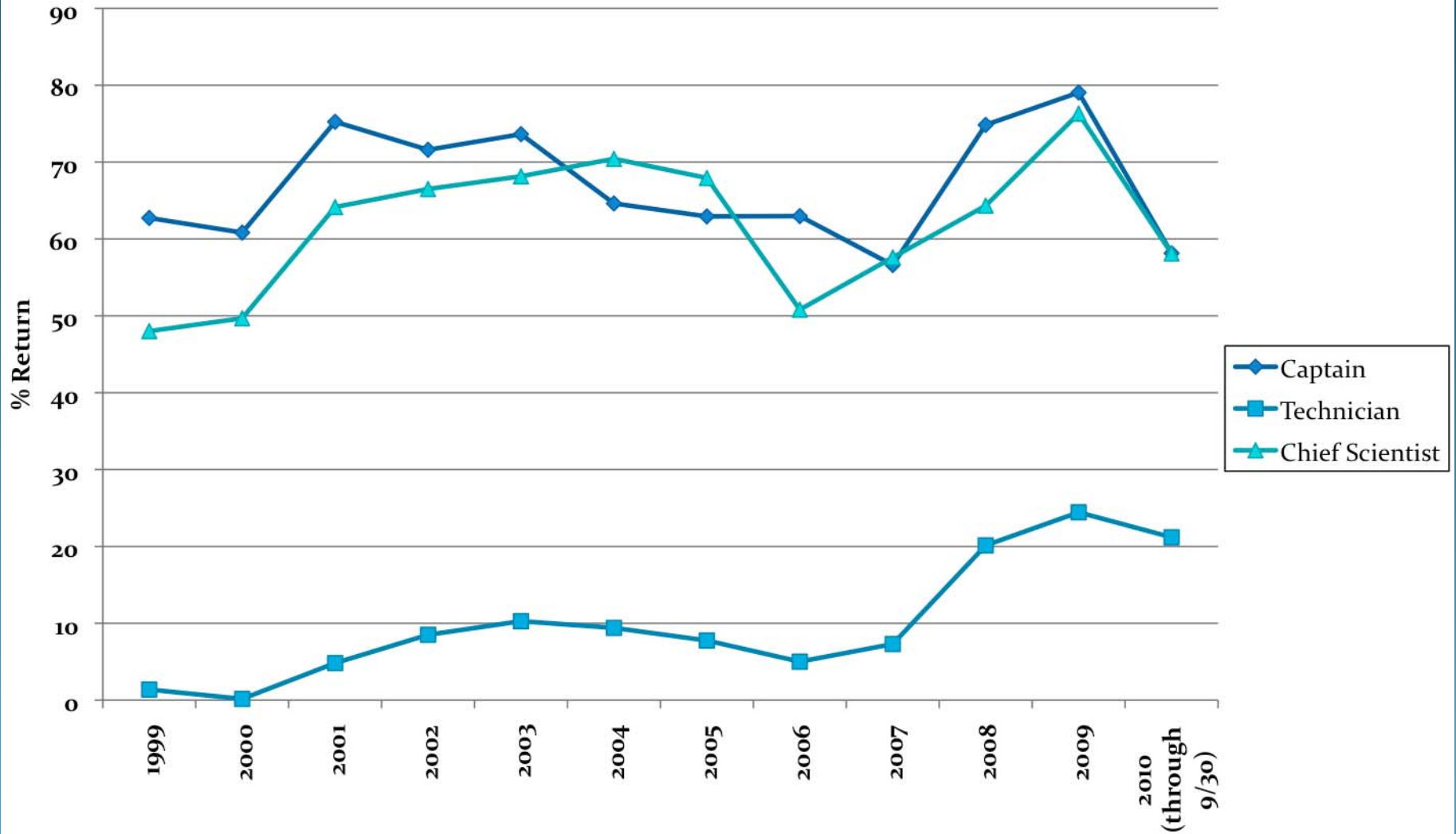
## Status – Distribution and Use

- UNOLS Office – Receives, reviews, reports out and archives all PCAR.
- UNOLS Exec Sec call the Marine Supt. Or the Ch. Sci to get “the rest of the story” and then discusses with the funding agency program office.
- Other copies distributed: Marine Ops Office, PI & submitter, Agencies.
- NSF – Linda Goad and Bob Houtman receive & review.
  - If there are any issues, Linda sends them to sponsoring NSF Program Manager, including Matt Hawkins and Jim Holik, Contact/follow-up with Marine Office.
- ONR – Tim Schnoor receives and reviews then forwards to the ONR sponsoring program officer

*To date, no complaints or suggestions to modify distribution.*



### Fleet Percent Return for Post Cruise Assessments 1999-2009





# PATH FORWARD

- Continue reviews – move on to next class.
- Start using:  
[http://strs.unols.org/members/diu\\_pca\\_edit.aspx](http://strs.unols.org/members/diu_pca_edit.aspx)  
vs. <http://www.gso.uri.edu/cgi-bin/pcget.cgi>
- Timely returns – it often takes significant pressure from the office. Since these are reviewed when received for safety issues which need immediate attention, late forms make this less effective



# Gender Climate at Sea

Voluntary Online Training Effort





# Gender Climate at Sea

## Gender Climate at Sea – Kenneth Coale/Jon Alberts/Annette DeSilva

- We have reviewed the on-line training courses on sexual harassment prevention offered by WorkPlace Solutions
- Implementation strategy is :
  - ❖ Committee selected WorkPlace Solutions training course: “Unlawful Harassment Prevention”
  - ❖ Modify the introduction to customize it for the UNOLS Fleet, addressing intensity of working at sea, etc.
  - ❖ Allow Marine Supts. to view course as a pilot program
  - ❖ Determine how many licenses are needed and who would act as Administrator.
  - ❖ Collect feedback and summarize the findings and get back to Workplace Answers with more concrete suggestions to customize for UNOLS fleet.
  - ❖ Work with Workplace Answers to customize a program if needed.
- **The estimated cost is about \$15 per training session**



# Unlawful Harassment Prevention

## Course Topics

- ❖ Federal and State Laws
- ❖ Application- apply to all employees in all industries
- ❖ Definition of what is Sexual Harassment
- ❖ Scenarios and questions presented in online forms
- ❖ Practical Harassment Prevention Strategies
- ❖ Organizations legal responsibilities



# UNOLS Outreach Initiatives



# UNOLS Outreach Initiatives

- Proposed UNOLS Lectureship Program
- Proposed Chief Scientist Training Workshop
- UNOLS 101 Slide Presentation
- New Web page
- Volunteer Opportunities
- UNOLS Lobby Display
- UNOLS Traveling Poster



# UNOLS Cruise Opportunities

For a full list of volunteers: [www.unols.org/info/cruise\\_opportunities.html](http://www.unols.org/info/cruise_opportunities.html)

Cruise Opportunities - Windows Internet Explorer

http://www.unols.org/info/cruise\_opportunities.html

File Edit View Favorites Tools Help

★ Favorites Suggested Sites Free Hotmail Web Slice Gallery

Cruise Opportunities

*Individuals Available for UNOLS Cruises*

Contact the UNOLS Office for the names and contact information for the individuals listed below who are interested in opportunities aboard UNOLS vessels <office>

#	Gender	Affiliation	Dates Available	Current Position	Areas of Interest	Previous R/V Experience?	< 18?	Passport?	Citizen?	Highest Degree Earned?	Medical Insurance?
7	female	Tufts U	06/15/2009 to 08/01/2011	Undergrad student	Marine ecosystems, conservation, sustainable use, marine mammals, fish	no	no	yes	USA	Bachelor	Yes
5	female	U. Maine	01/01/2010 to 08/30/2010	Biology Undergrad.	Marine mammals and coral reefs.	no	no	yes	USA	High School	Yes
13	-	SEA	01/10/2009 to 01/01/2020	deckhand aboard SSV Corwith Cramer	I am interested in assisting scientists conducting research in a variety of fields: physical oceanography, geological oceanography, sediment slope stability, marine biology (organismal), and I am open to any other oceanographic research.	yes	no	yes	Bulgaria	Bachelor	Yes
31	male	URI	5/6/2009 to 5/31/2010	College Graduate	Marine Biology, Ecology, Physiology, Taxonomy, Deep-Sea research, Animal Development	yes	no	yes	USA	Bachelor	Yes
6	female	URI/GSO	05/10/2009 to 04/01/2010	Grad Student	The impacts of anthropogenic activities on coastal ecosystems, and biogeochemical nutrient cycles	yes	no	yes	USA	Bachelor	Yes
47	-	INAU	07/01/2010 to 09/01/2010	Master Student	Physical oceanography, ocean observing systems, ENSO,	no	no	yes	Turkey	Bachelor	Yes
33	female	Linfield College	07/07/2009 to 09/01/2010	Undergrad student	Global Ocean Climate Change	no	no	yes	USA	Bachelor	Yes
30	male	USCG	07/31/2009 to 08/31/2010	Student	Its my desire to accrue more sea-time as a prospective Ordinary Seaman, and to upgrade my U.S. Merchant Mariner Document (MMD) to Able Body Seaman (Special), and to do so on a voluntary basis, in exchange for my services.	no	yes	yes	USA	High School	Yes
37	female	U. Penn	08/01/2009 to 06/01/2010	2009 College Graduate, Currently Unemployed	My primary interests are in marine biology and ecology, biological conservation and GIS technology.	no	no	yes	USA	Bachelor	Yes
34	female	UC Santa Cruz	08/15/2009 to 12/31/2010	wildlife biologist	include but are not limited to: phyto/zooplankton, current ecology, ocean acidification	yes	no	yes	USA	Bachelor	Yes
39	male	MBARI	08/23/2009 to 05/15/2010	MBARI intern	I'm interested in ecosystem dynamics, especially related to variability due to El Nino, PDO, climate change, ocean acidification etc. I'm interested in nutrient cycling and carbon flux in upwelling zones. I'm interested in going to sea!	yes	no	yes	USA	Bachelor	Yes
44	-	URI	09/01/2009 to 09/01/2010	Ph.D candidate	-	no	no	yes	China	Master	Yes



# UNOLS Cruise Opportunities

Post an opportunity at:

[http://www.unols.org/forms/posting\\_opportunities.asp](http://www.unols.org/forms/posting_opportunities.asp)

The screenshot shows a web browser window titled "Cruise Opportunities - Windows Internet Explorer". The address bar displays "http://www.unols.org/info/cruise\_opportunities.html". The page content includes the following text:

*A Listing of Education and Outreach Cruise Opportunities*

Interested in participating in an oceanographic cruise? Individuals are often recruited to help stand watch and collect data. Additionally, berths are sometimes available and can accommodate ancillary science, education, and outreach activities. The Chief Scientist might sometimes ask the individual(s) associated with these ancillary activities, to assist in the cruise by also standing watch. Any cruise responsibilities and expectations should be clearly articulated and agree upon between the Chief Scientist and individual(s) occupying the available berth(s) prior to the cruise.

General criteria are:

- sea-worthiness (some experience at sea or seasickness awareness);
- good health and evidence of medical insurance;
- scientific interest or background;
- ability to follow detailed instructions carefully;
- ability to work safely on an oceanographic cruise.
- A valid passport is required.

A list of cruise opportunities is provided below. If you are interested in participating in any of these cruises, arrangements should be made with the Point of Contact listed for the cruise.

<i>Cruise Dates</i>	<i>Ship</i>	<i>Geographic Area</i>	<i>Watchstander Responsibility</i> (click on link for additional details)	<i>Berths Available</i> (for Education or Outreach Programs)	<i>Point of Contact</i>

The UNOLS Office has worked to match volunteers with cruises by:

1. Contacting 2010 PIs and asking them if they have empty bunks.
2. If appropriate, putting the volunteer in touch with the chief scientist



# GSO Lobby: UNOLS Touch- screen display





# University of Delaware: Coast Day

