



Summary of 2010 operations and the 2011 scheduling process



UNOLS Ship Scheduling Committee Report

Committee Chair – Stan Winslow

Committee Vice Chair- Liz Caporelli

Fleet Operations for 2010 & Outlook for 2011

Chairman's Report of Committee Activities

Executive Secretary's Utilization Charts



Ship Scheduling Committee News

- Stan Winslow -SSC Chair term expires October 2010
- Liz Caporelli - SSC Vice Chair- stepping down
- Normally Vice Chair fills Chair's position- however Liz recently accepted a new position with the OOI group at Woods Hole.
- Working to fill both the Chair and Vice-Chair's vacancies
- Nominations put forward by Ship Schedulers to UNOLS Chair with endorsement by UNOLS Council. Three nominations so far.



2011 Process

January 2010

- Global Ship Schedulers met with NSF, ONR,NOAA reps at SIO
- Initial Review of 2011 work- numbers down, way down.
- Global Ship Locations at end of 2010
- First Cut at 2011 schedule options with Agency input on priorities.
- Publish to Researchers 2011 Sea Going Research Opportunities
- Ask administration to encourage proposal submittals

February- May

- Schedulers worked letters of intent, awaiting more STR's.
- Liz Caporelli contacted NOAA/DART Program with positive results.

June

- Ship Scheduler's Conference Calls- (4) good Global schedules, (2) questionable
- Agency recommended putting best schedules you can at this time.



2011 Process - Continued

August - Global Ship Schedulers met at NSF-

- Reasonable schedules worked out for all large ships.

September - Schedulers posted 2011 schedules

- Agency Letter of Recommendation submitted to Council Chair on 9/15/10 & Council on 9/27/10

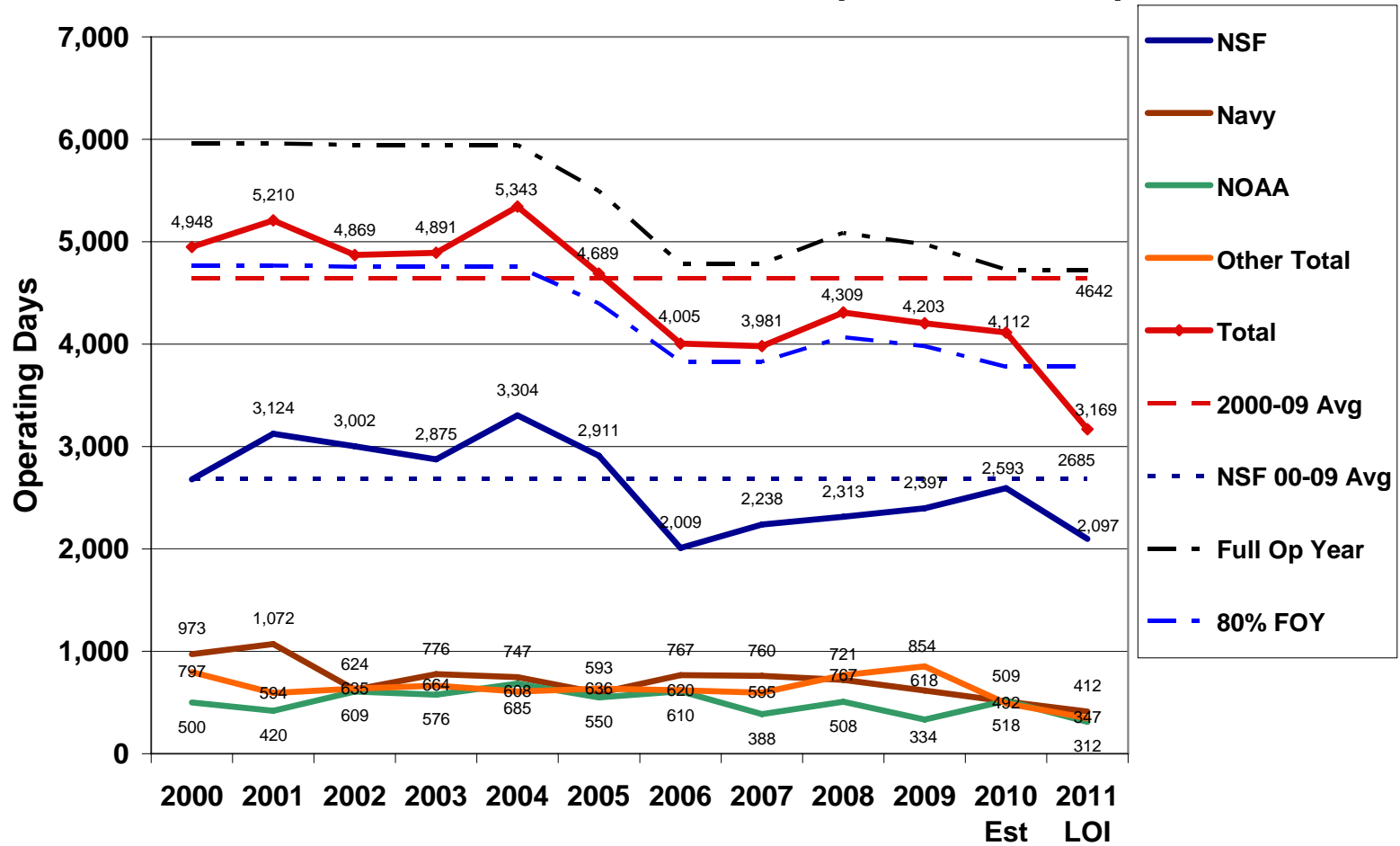
Conclusions-

- We made it through another year
- Continued Problems with reduced ship day demand and funding shortfalls of concern for the future.



SSC

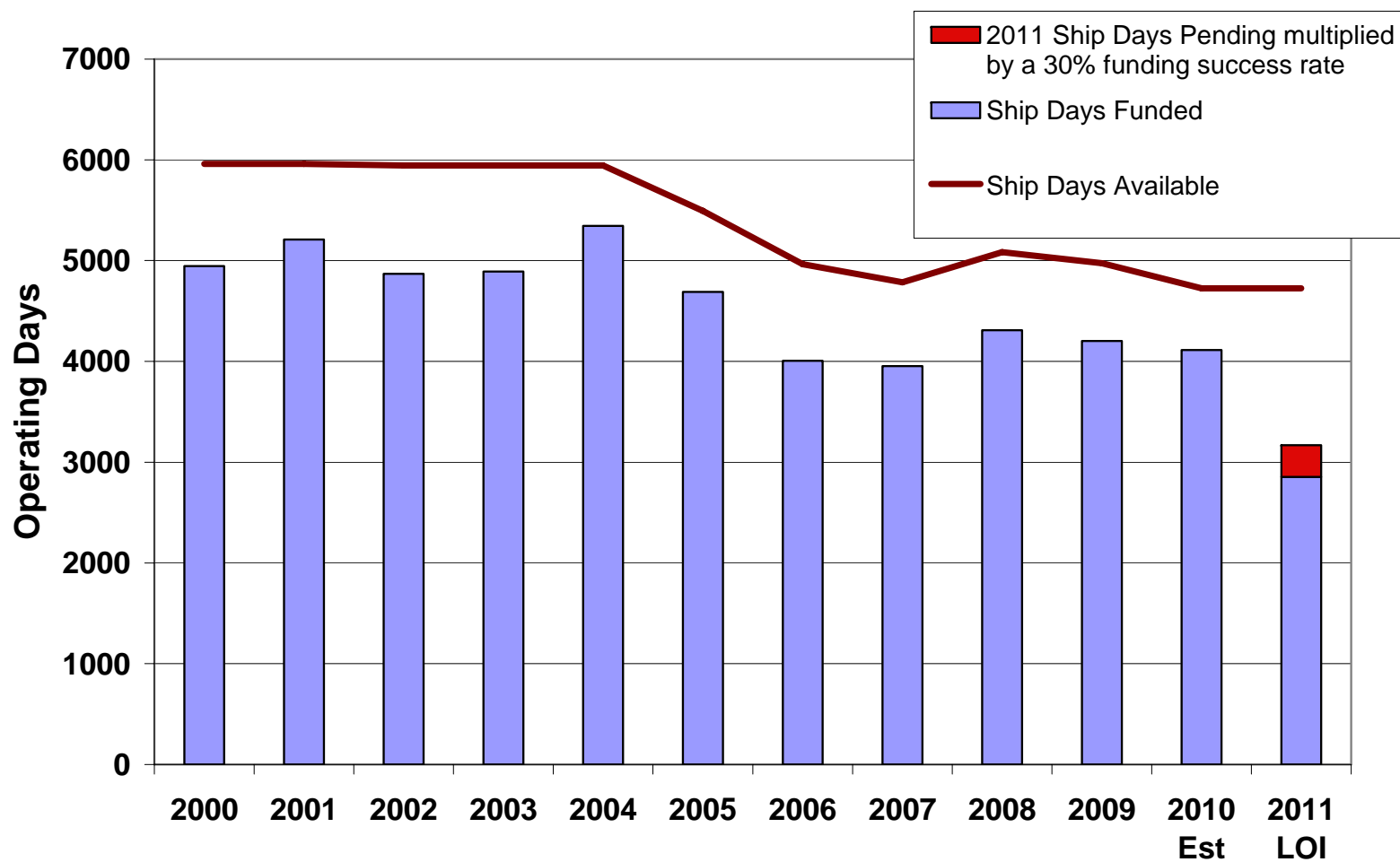
UNOLS Fleet Utilization (2000 - 2011)





SSC

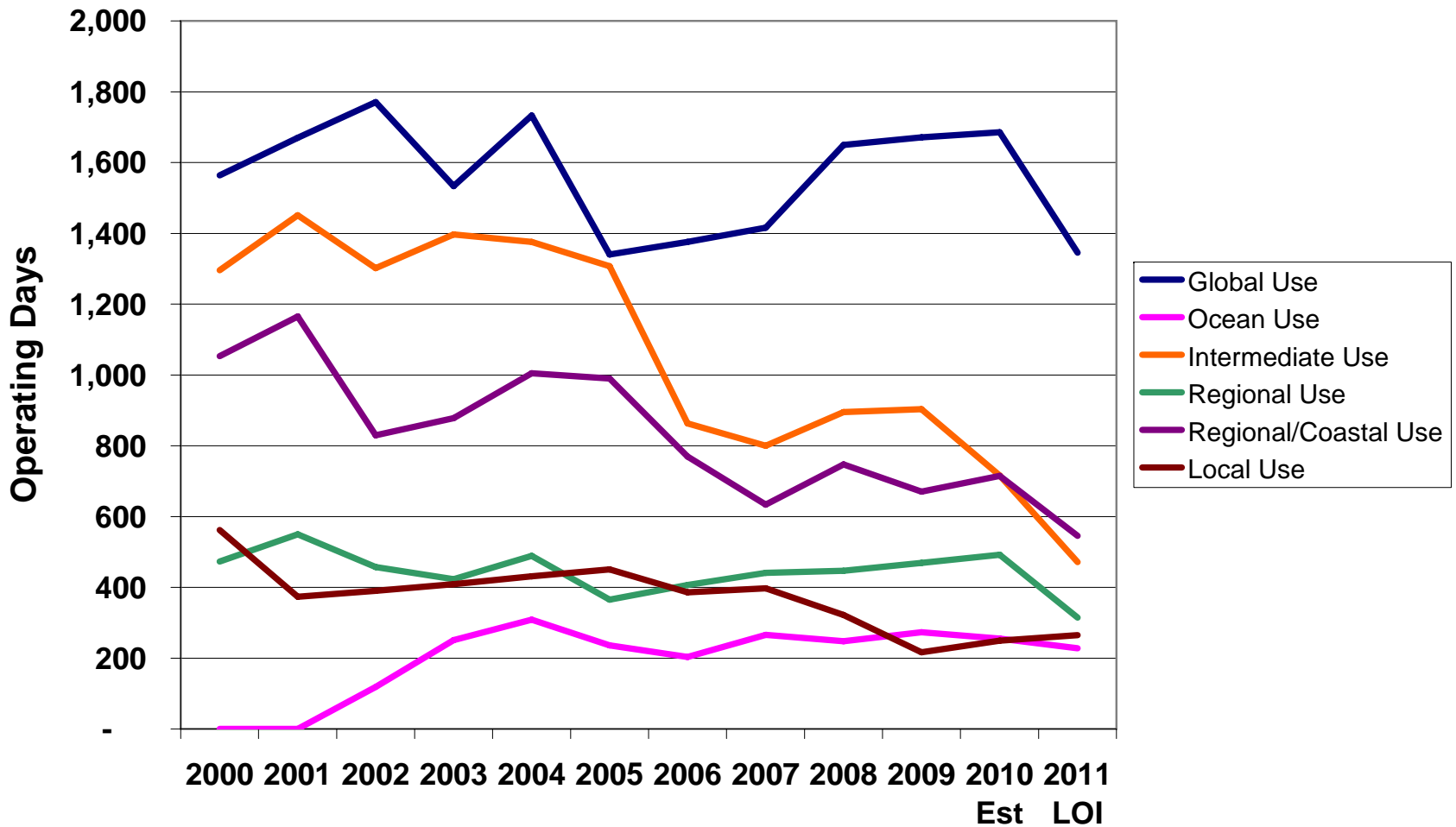
Ship Days Funded/Pending and Days Available





SSC

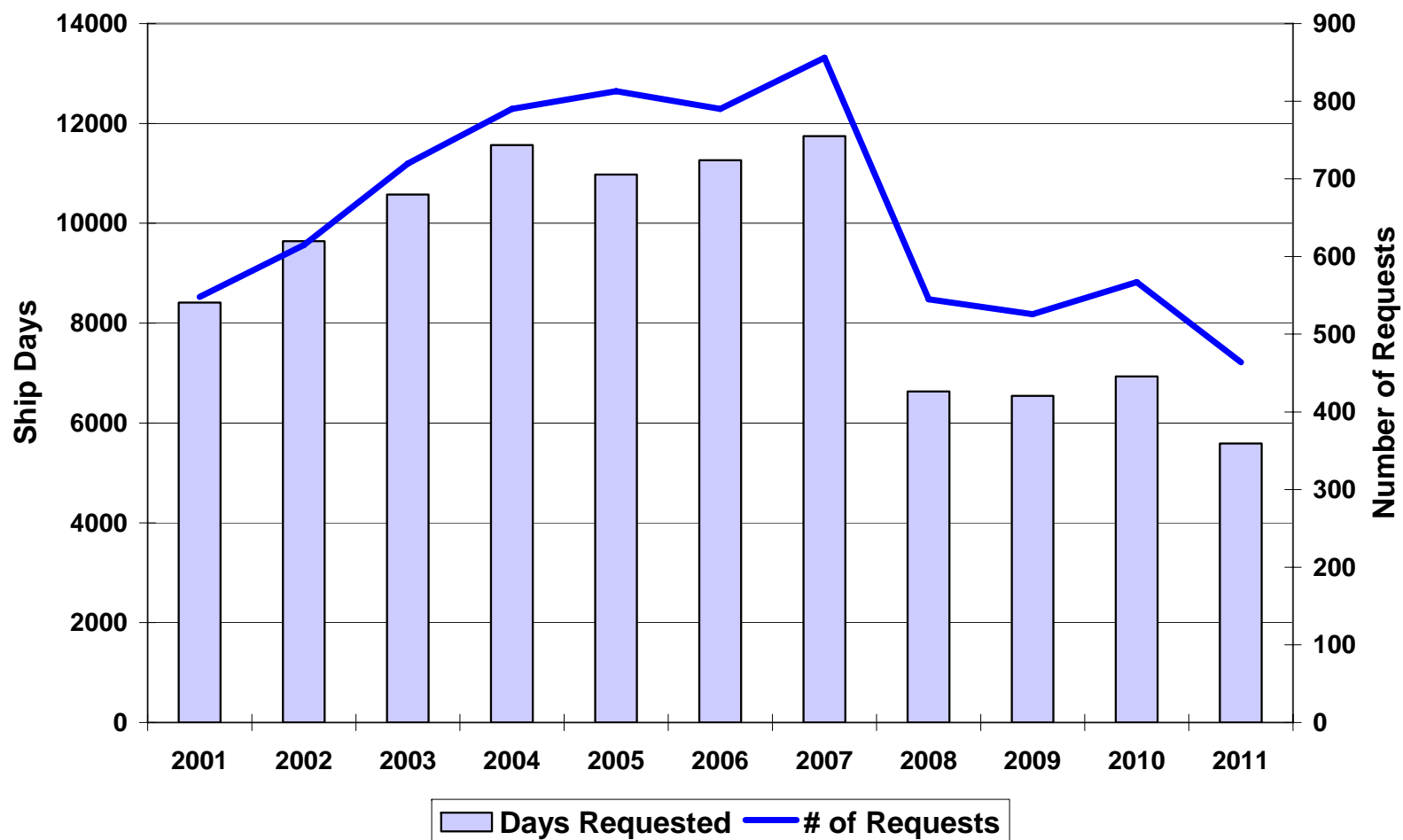
Ship Utilization by Class: 2000 - 2011





SSC

Ship Time Request Demand





Findings

2009 Funded Days

Agency	ACOE	DOE	EPA	INST/ State	MMS	NASA	NAVY	NOAA	NSF	USGS	Other	Total
Days	5	0	0	175	57	40	618	334	2397	21	556	4203

2010 Operating Days

Agency	ACOE	DOE	EPA	INST/ State	BOEMRE	NASA	NAVY	NOAA	NSF	USGS	Other	Total
Days	5	7	3	181	63	0	509	518	2593	20	213	4112

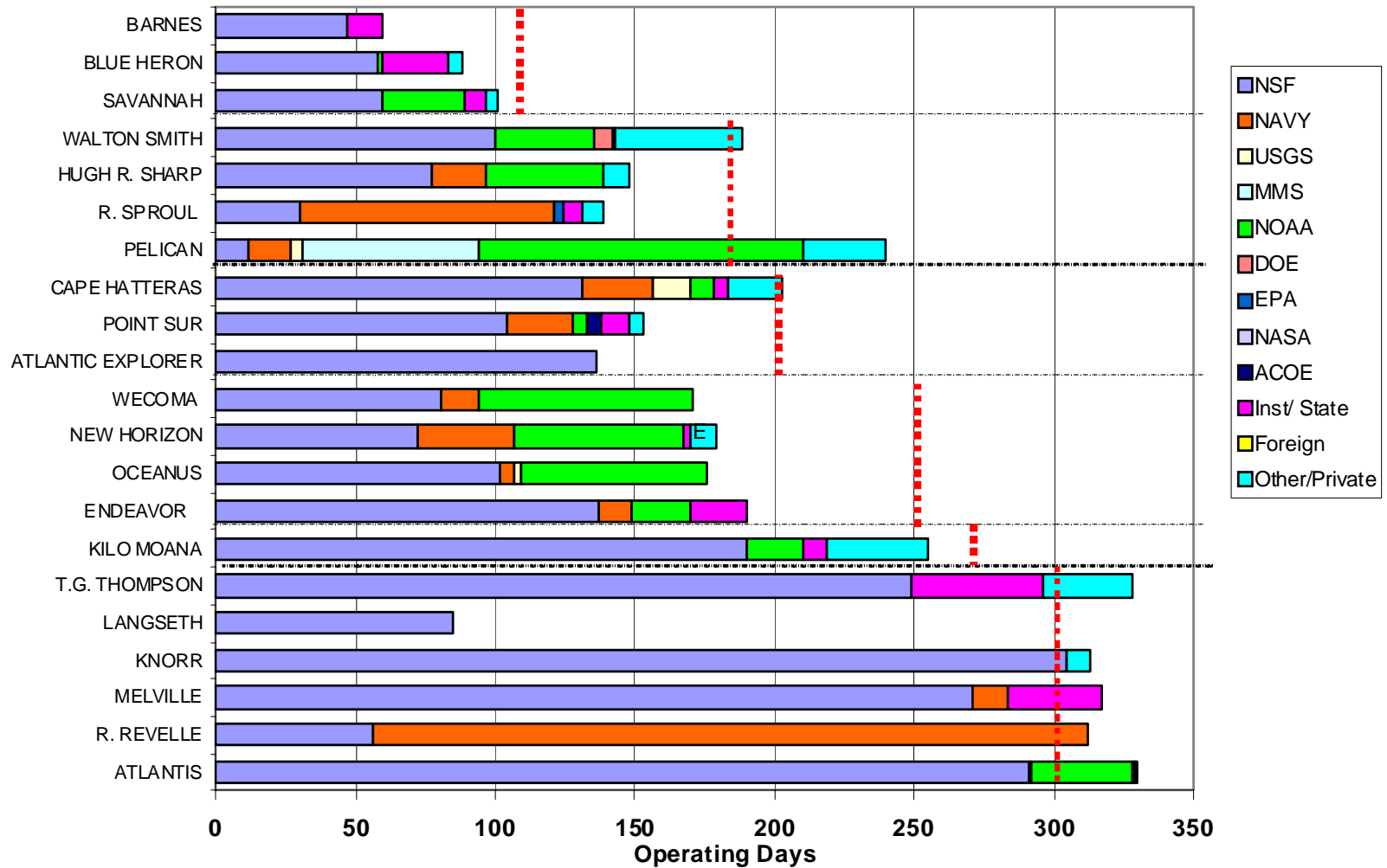
2011 Proposed Days

Agency	ACOE	DOE	EPA	INST/ State	BOEMRE	NASA	NAVY	NOAA	NSF	USGS	Other	Total
Funded Days	5	31	0	142	44	0	374	205	1978	0	76	2855
Pending Days x 30%		8	0	6	4	0	38	107	119	19	13	314
Total Funded & Pending	5	39	0	148	48	0	412	312	2097	19	89	3169



SSC

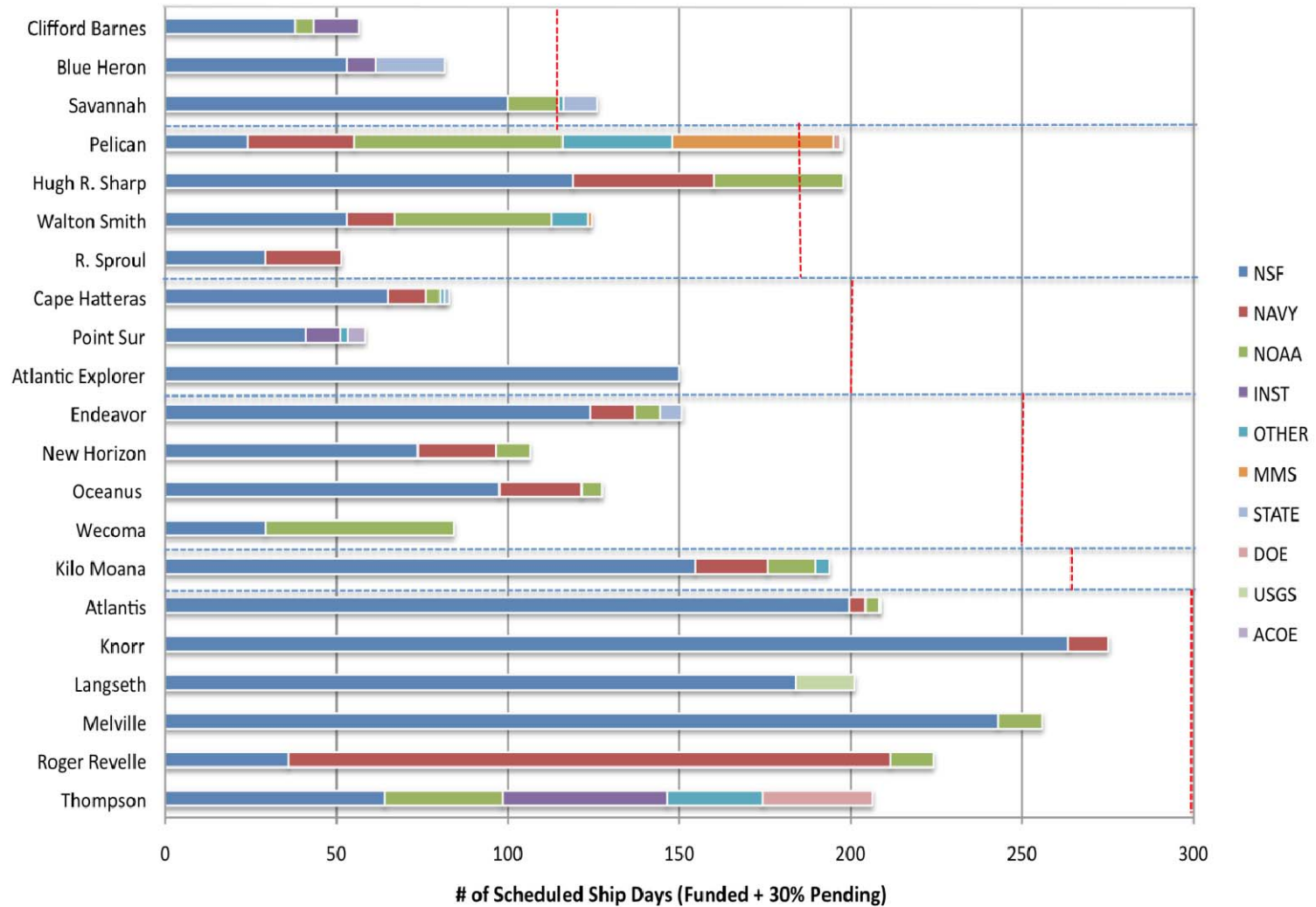
2010 Schedules





SSC

2011 Scheduled Ship Days





Summary of Agency Recommendations for 2011 Fleet Operations



Agency Recommendation for 2011 Fleet Operations

- Letter prepared by NSF/ONR/UNOLS
- Submitted to Council 15 September 2010

Recommendations

- Depending on the success of the Montoya cruise in September 2010 which was scheduled on the *Cape Hatteras* and the *Oceanus*, NSF will decide if the 2011 Montoya cruise will also be a two-ship operation or be scheduled on a Global.
- Maintenance periods in the vessel home-port are strongly encouraged both as a cost saving measure as well as an opportunity to conduct preventative maintenance.



Recommendations, cont'

- If no additional work is identified when the final schedules are completed, it may be necessary for NSF to consider providing some funds to support extended maintenance or partial layup periods for the NSF-owned ships, *Wecoma and Point Sur*.
- Encourage operators of all ships to find ways to reduce costs and seek appropriate opportunities to support research and education programs supported by other funding sources.
- Emphasize to operators of institution-owned ships that they must decide if their planned schedule can support the cost to operate.
- An analysis of the possible causes for the recent decline in shiptime request demand is recommended.