



# Community Response New Alvin Sphere



## Q.1 Who answered the survey?

- 111 Responses by May 17, including:
  - 34 Geologists
  - 28 Biologists
  - 24 Geochemists
  - 19 Microbiologists
  - 5 Geophysicists
  - 3 Engineers
  - 2 Climate change scientists
  - 1 Physical Oceanographer
  - 1 Planetary Explorer
  - 1 Scientific Illustrator
  - 1 Pilot



## Community Response New Alvin Sphere



### Q.2 What vehicles used previously? (105 responses)

- HOVs (13 different vehicles)
  - Alvin
  - Shinkai 6500
  - Nautille
  - Pisces (IV & V)
  - Johnson Sea Link (1 & 2)
  - Mir (1 & 2)
  - Sea Cliff
  - Turtle
  - Shinkai 2000
  - Cyana



# Community Response New Alvin Sphere



## Q.2 What vehicles used previously? (105 responses)

- ROVs (33 different vehicles)

- |                    |                 |                   |
|--------------------|-----------------|-------------------|
| - Jason (1 & 2)    | - ROPOS         | - Aglantha        |
| - Tiburon          | - Ventana       | - Bathysaurus     |
| - ATV (Navy)       | - Hyper Dolphin | - Max Rover       |
| - Kaiko            | - Doc Ricketts  | - Clelia          |
| - Victor           | - Isis          | - Nekton Gamma    |
| - Oceanic Explorer | - Super Scorpio | - Scoop           |
| - Cherokee         | - Hercules      | - HiSub           |
| - Makali'i         | - Deep Rover    | - Delta           |
| - Wasp             | - Deep Worker   | - Scorpio         |
| - Kiel 6000        | - Quest         | - Dolphin 3k      |
| - Takuyo 2000      | - CGS           | - Canyon Offshore |

- None = 1

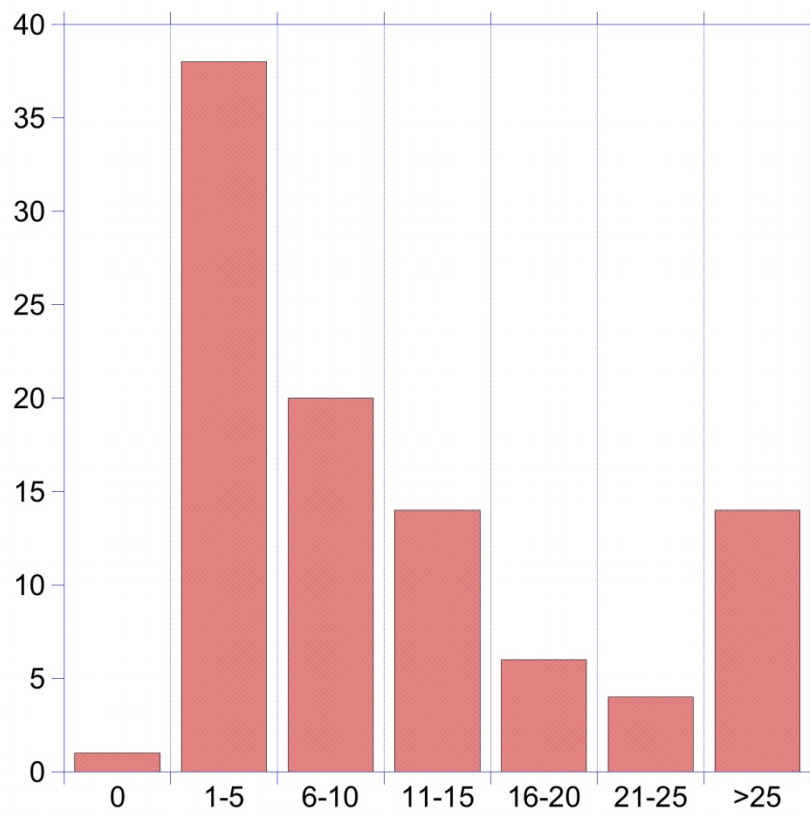


# Community Response New Alvin Sphere



Q.4 What is your prior Deep Submergence experience?  
(103 responses)

Career # Expeditions



Total # HOV/ROV Expeditions Joined

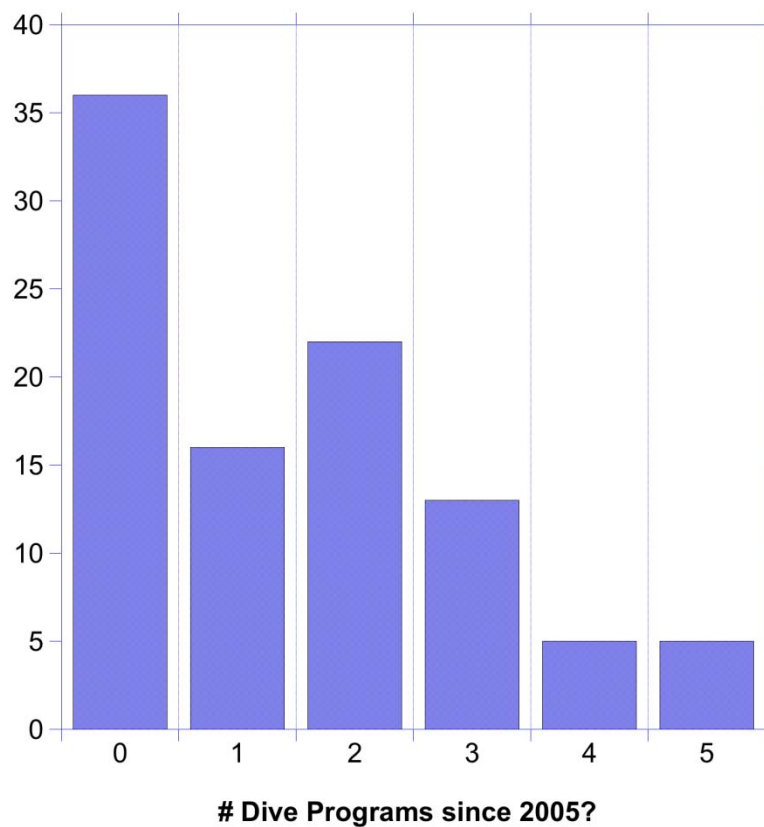


# Community Response New Alvin Sphere



Q.5 What is your recent Alvin experience?  
(98 responses)

HOV dives (2005-09)





## Community Response New Alvin Sphere



Q.6 Will you be writing future Alvin proposals?  
(99 responses)

56% = Yes

44% = No

- Preferences for ROVs for some (3 vs 1; ROVs vs HOVs)
  - Conditional on Variable Ballast

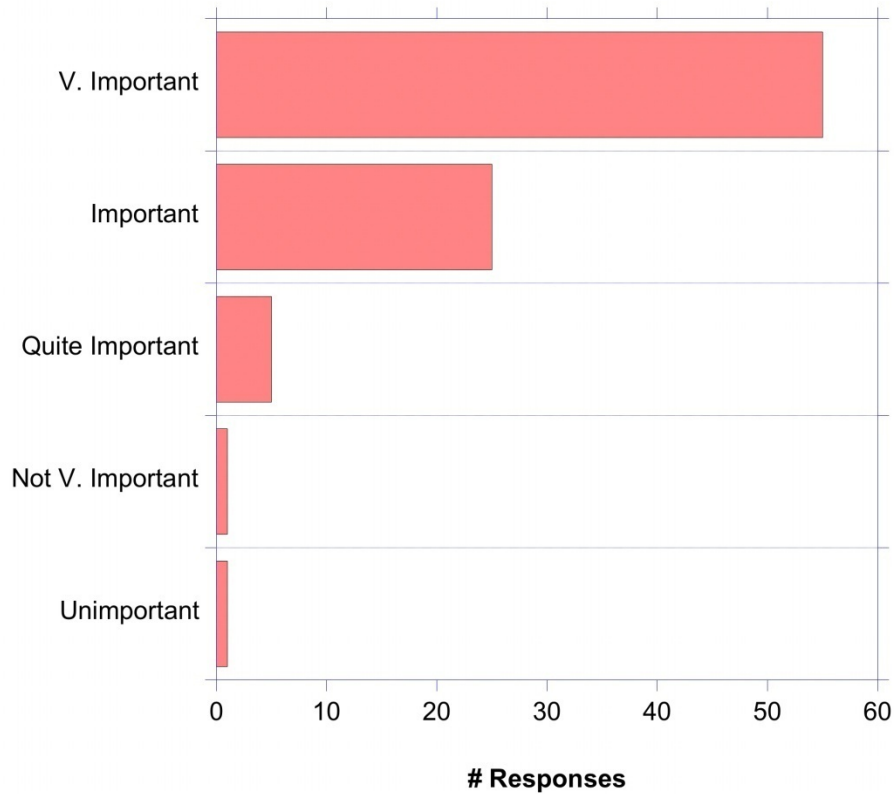


# Community Response New Alvin Sphere

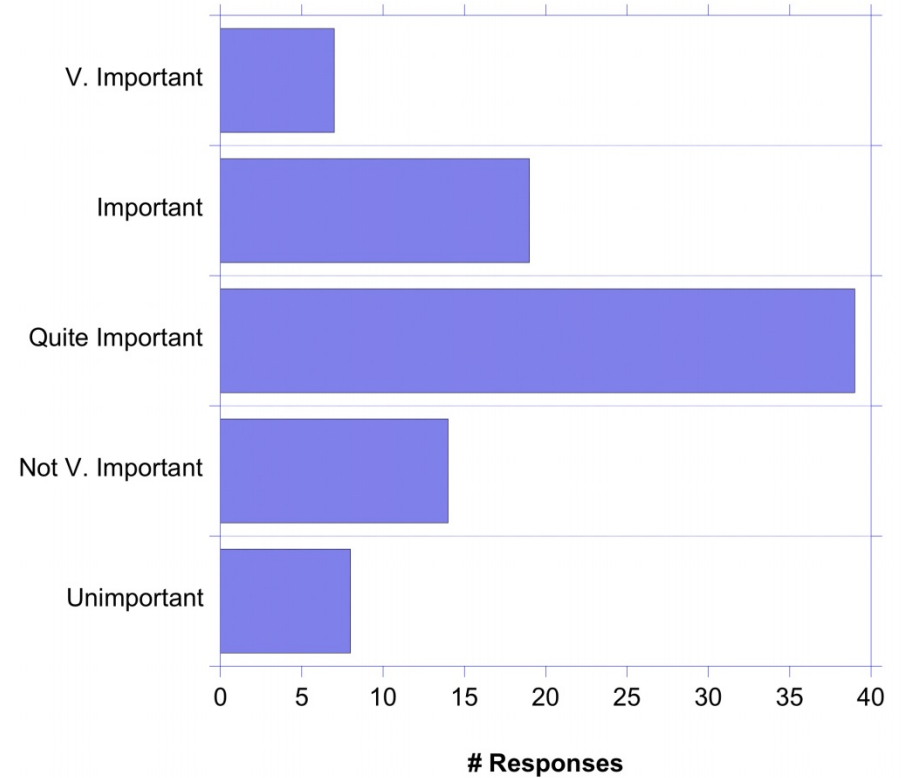


## Q.7 Interior Ergonomics (87 Responses)

Observer Comfort at the Seafloor



Observer Comfort During Ascent & Descent



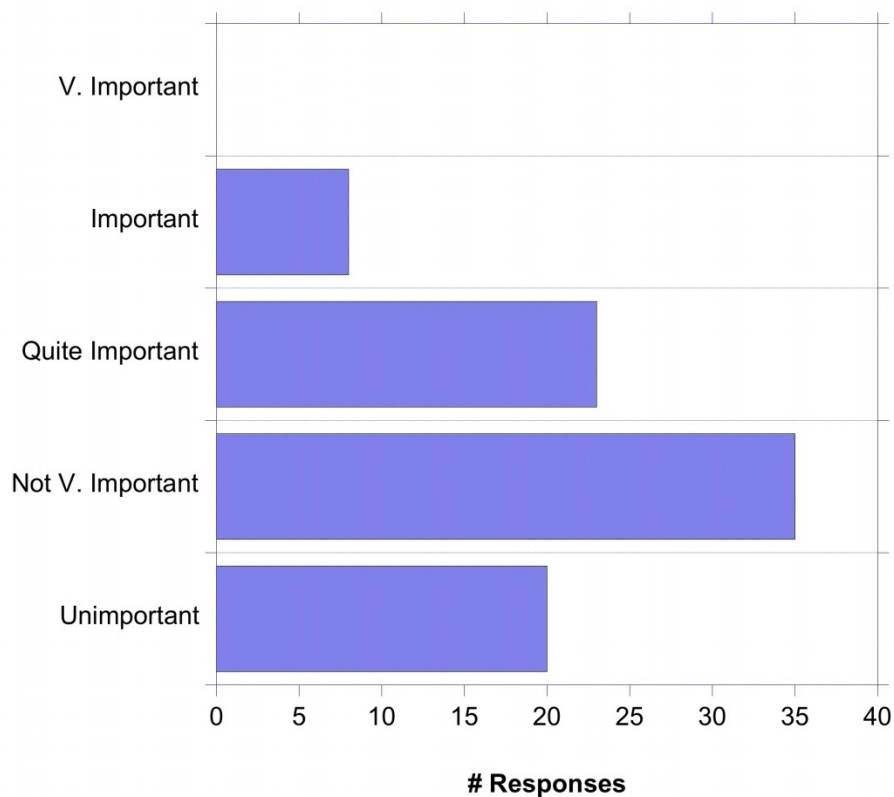


# Community Response New Alvin Sphere

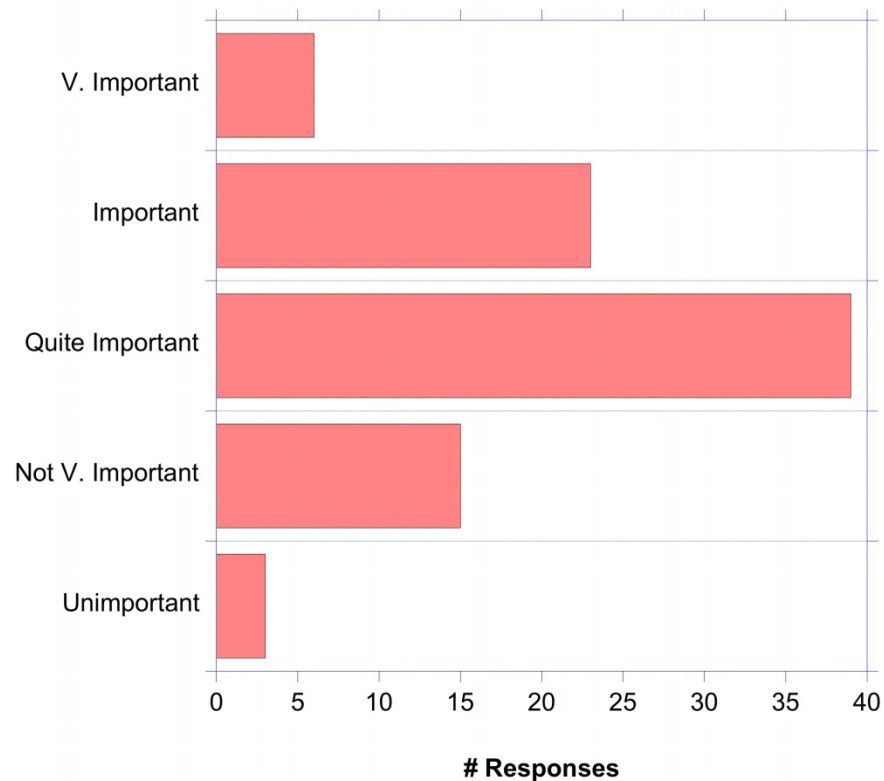


## Q.7 Interior Ergonomics (87 Responses)

Need for Privacy/Personal Space



Importance of Interior Lighting







# Community Response New Alvin Sphere



Q.8 Pilot's Seat = Do whatever it takes to **make pilots happy**

Q.9 = Position of Observer at seafloor

Lie flat = 13      **Both Options = 50**      Kneel = 15

Q.10 = Position of Observer during Ascent/Descent

Lie flat = 7      **Both Options = 38**      **Sit up = 31**



# Community Response New Alvin Sphere



Q.11 = How Tall Are You?

Under 6 feet = 59 (~66%)

≥6 feet = 28 (~33%)

Q.12 = Corrected Vision?

Long-sight: 12 (14%)

Near-sight: 42 (48%)

Both: 10 (12%)

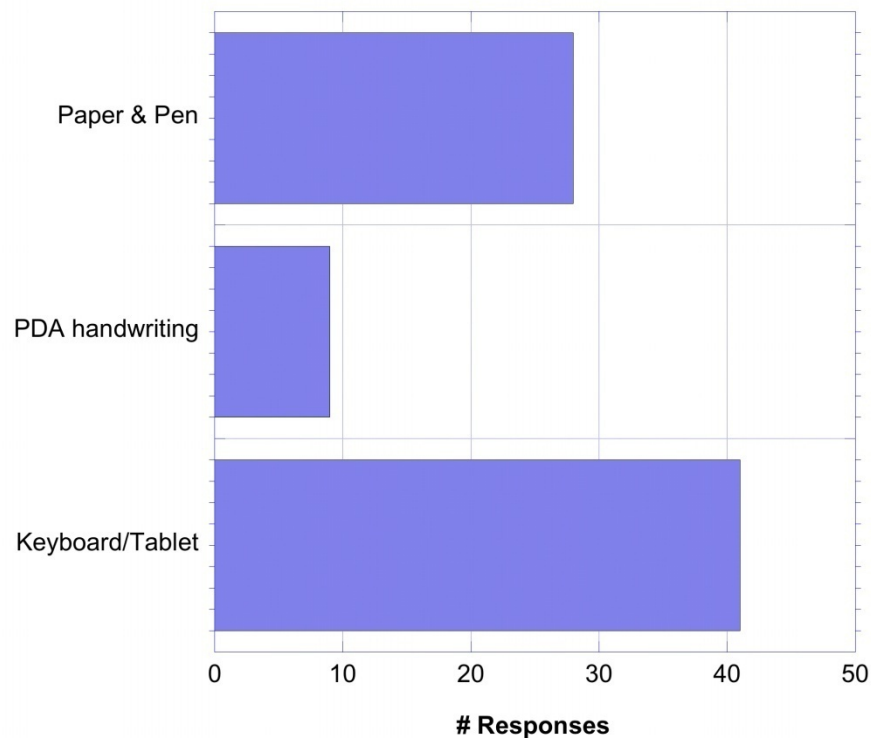


# Community Response New Alvin Sphere

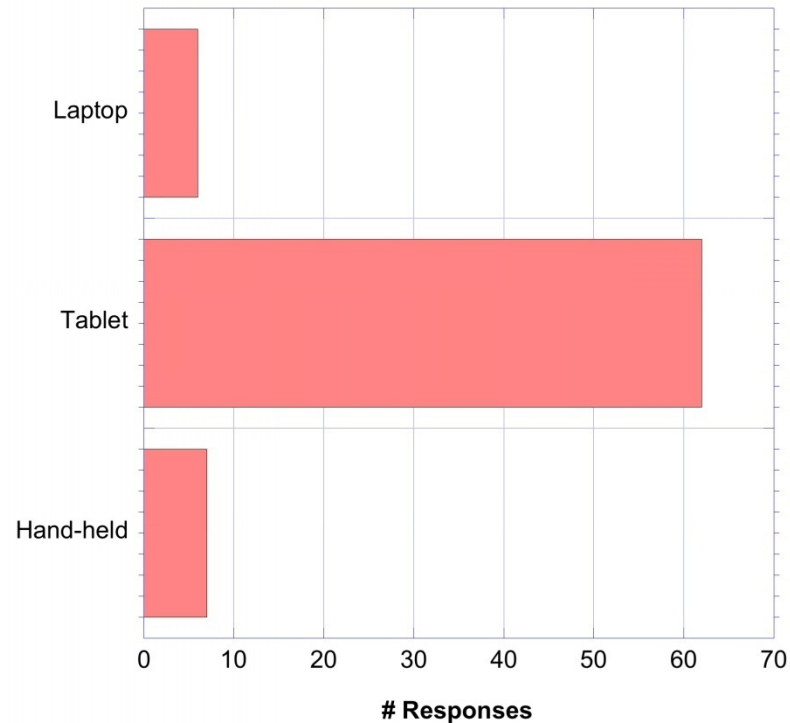


## Qs17 & 18: Meta-data Capture & In-Sphere Devices (75-80 responses)

MetaData Capture



Size of Device





# Community Response New Alvin Sphere



Q.20 Will you always want to bring your own laptop? (78 responses)

16 = Yes

62 = No

Q.21 Would a small hard drive “clone” of your laptop suffice? (73 responses)

61 = Yes

12 = No



# Community Response New Alvin Sphere



Q.23 Would you be interested to visit sphere at YOUR expense?

29 = Yes

52 = No

Q.24 Would you be interested to visit sphere at others' expense?

31 = Yes

44 = No