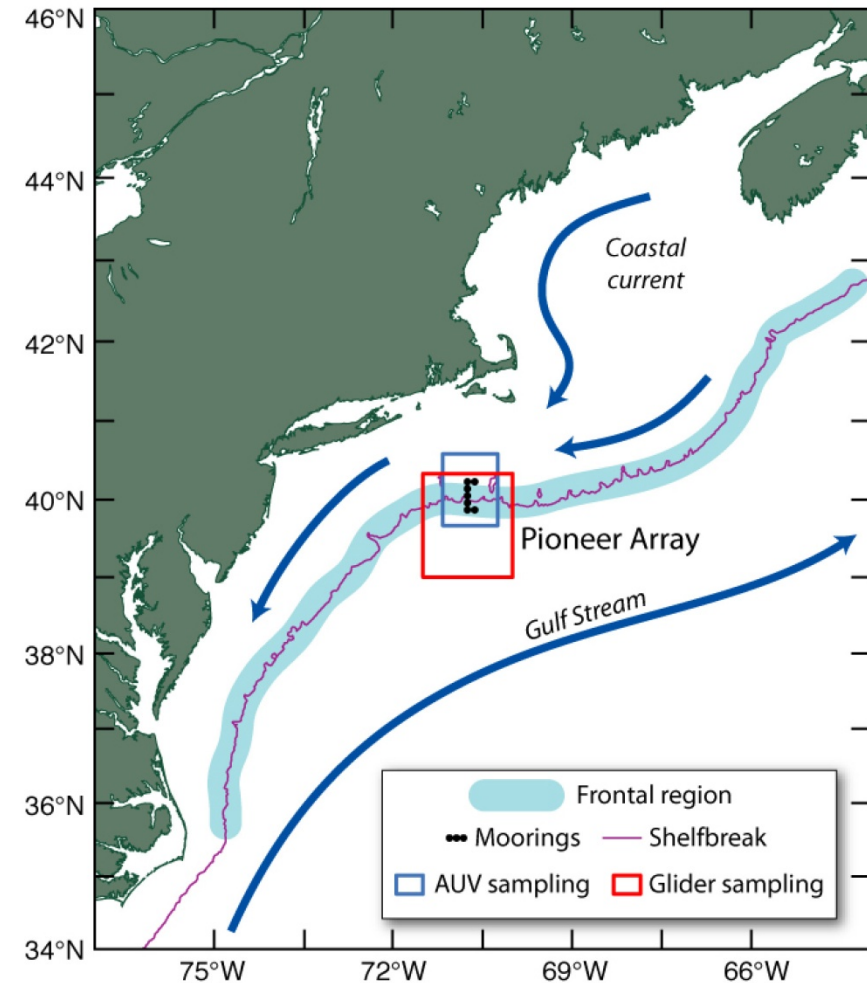
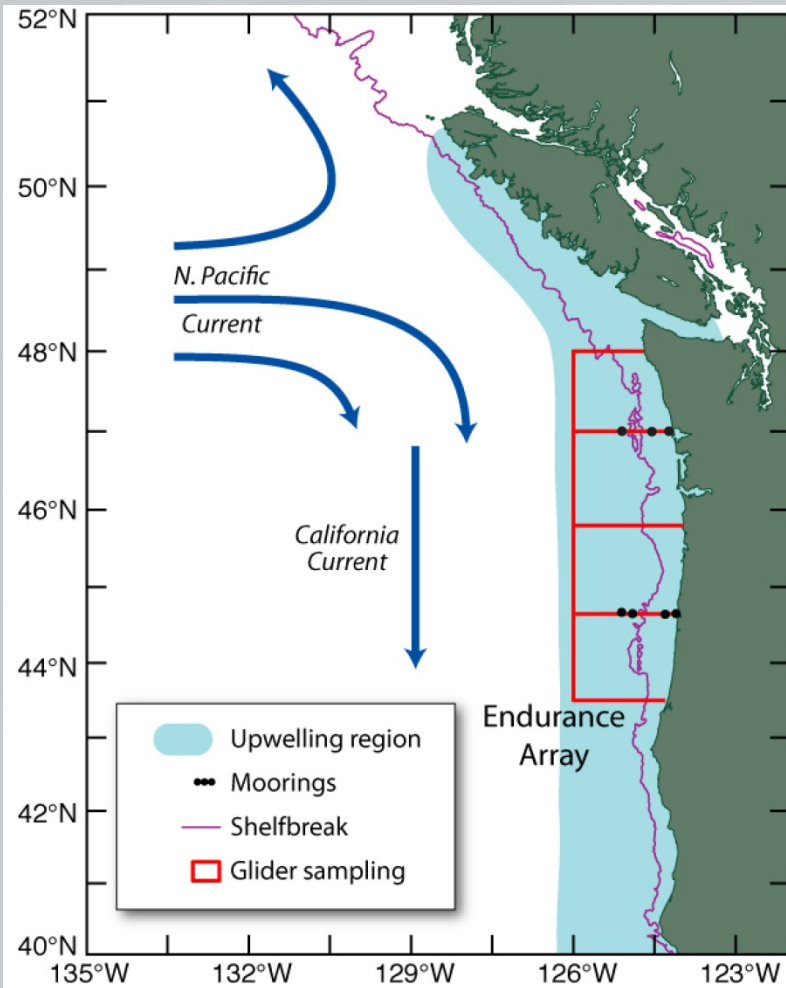


# OOI Coastal Arrays

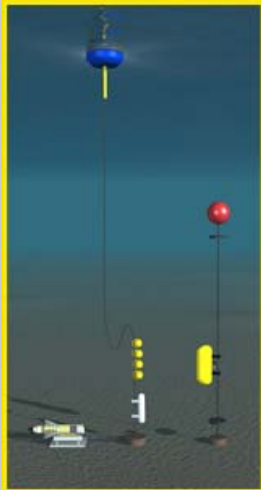
- Prototypical eastern boundary system (wind-driven upwelling)
- Links to climate forcing (PDO, ENSO)

- Prototypical shelfbreak system (buoyancy-driven current)
- Links to climate forcing (NAO)



# Pioneer Array

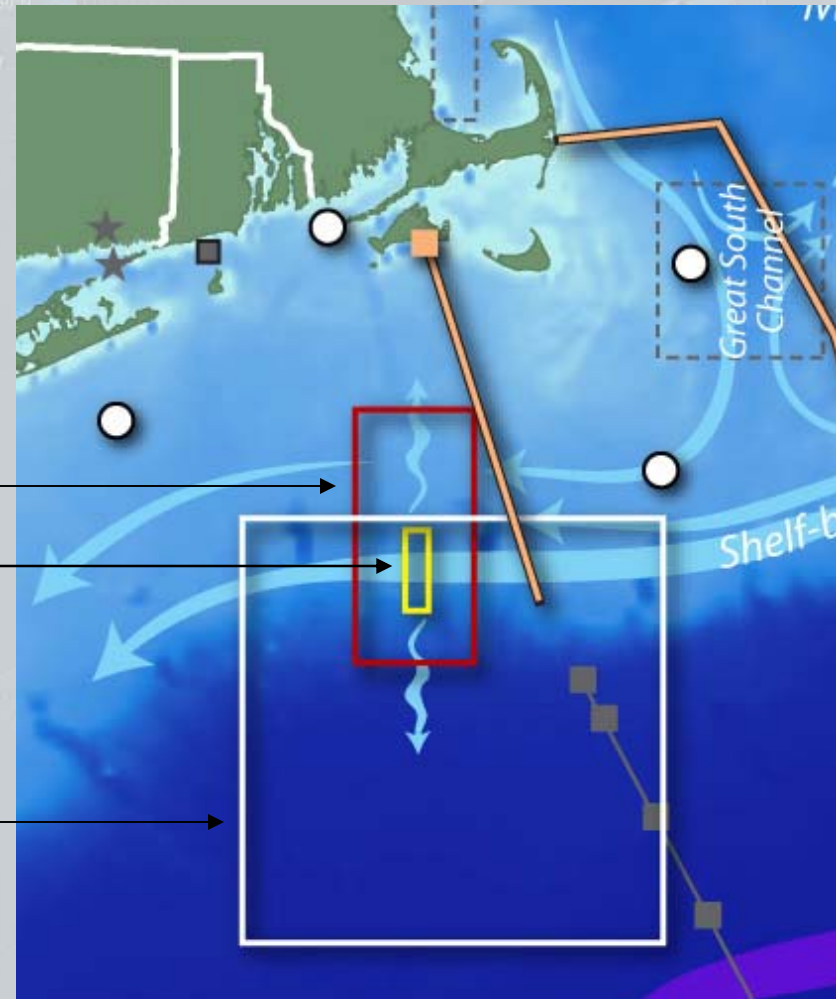
- Multi-platform, multi-scale
- Fixed and mobile assets
- Integrated with regional observing assets



moorings



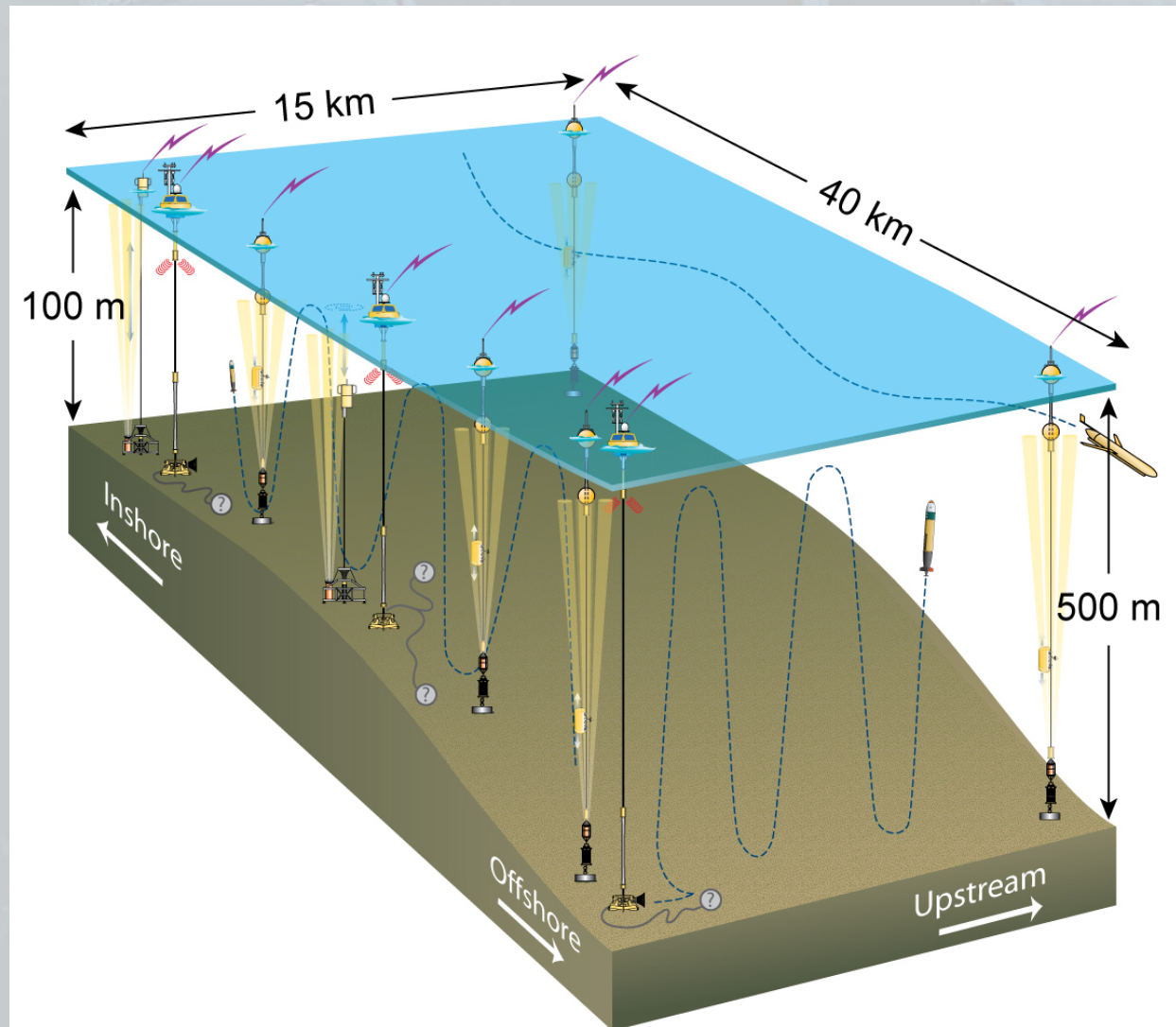
gliders



Plueddemann and Trowbridge (WHOI)

# Pioneer Array

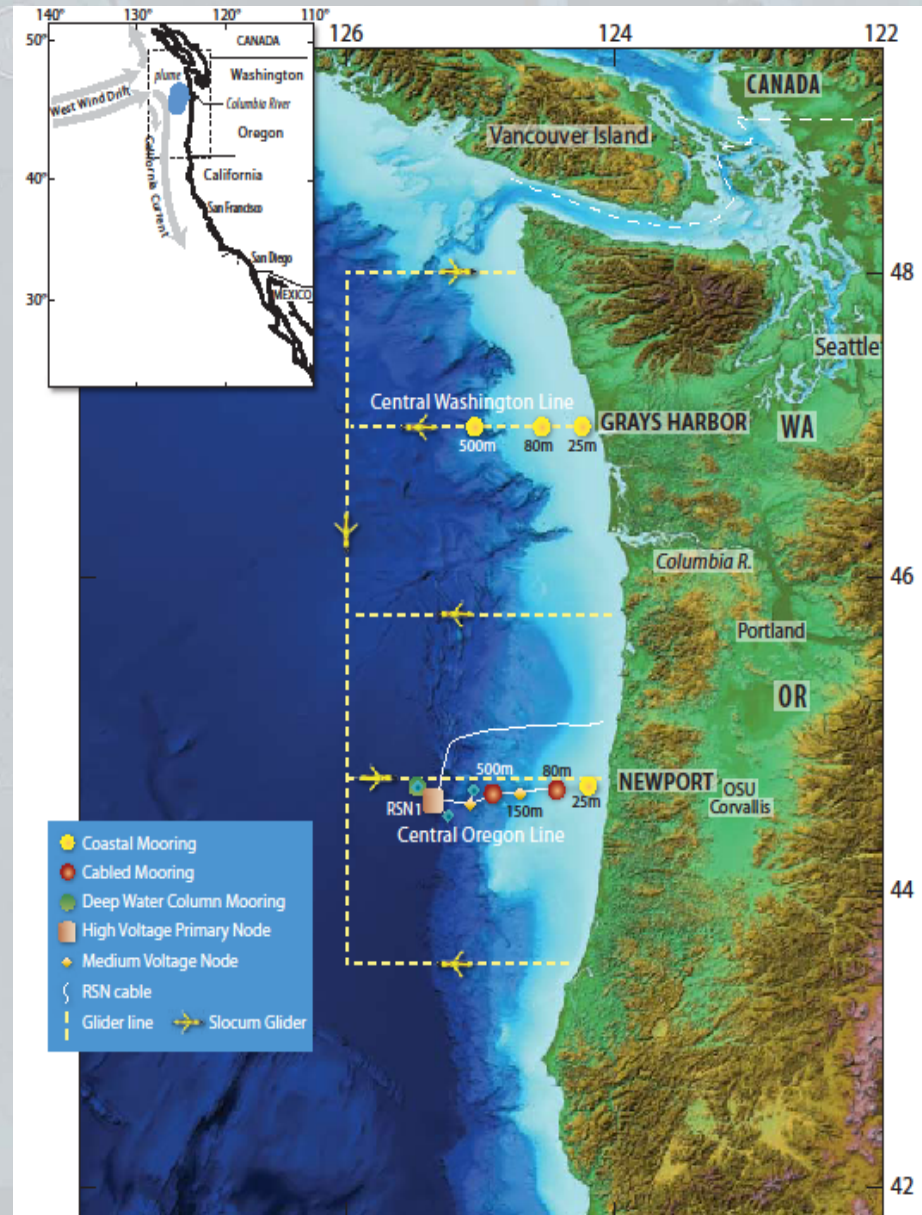
- Full water column
- Cross-front resolution
- Power-generating buoys
- Multi-function nodes
- AUV docks





# Endurance Array

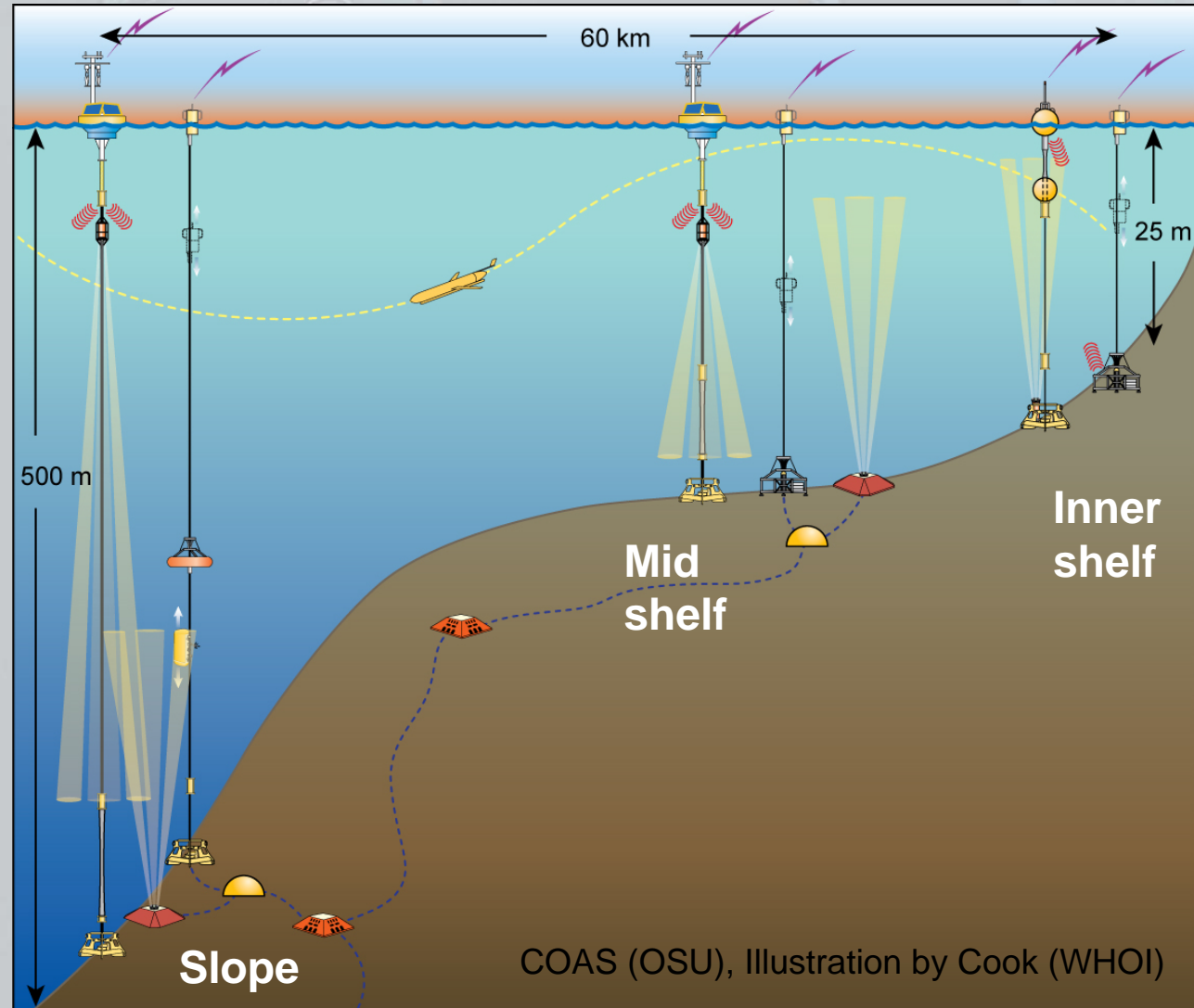
- Multi-platform, multi-scale
- Fixed and mobile assets
- Cross-shelf arrays at Newport and Grays Harbor
- Oregon Line Cabled to RSN



COAS (OSU)

# Endurance Oregon Line

- Full water column
- Key cross-shelf sites
- High power & bandwidth via RSN cable
- Benthic experiment nodes



# Endurance Washington Line

- Full water column
- Key cross-shelf sites
- Power-generating buoys
- Multi-function nodes

