

Amver Maritime Relations

A Partnership For Saving Lives

Research Vessel Operator's Committee

April 21, 2010



What is Amver?

The Automated Mutual Assistance Vessel Rescue System is a computer based voluntary global ship reporting system used by search and rescue authorities to arrange for assistance to persons in distress at sea



Amver History

ounded in 1958



Global Coverage by 1971



1980 Princendam Fire and
Rescue



How does Amver work?

Amver is used solely for search and rescue

Amver data is not used for security purposes



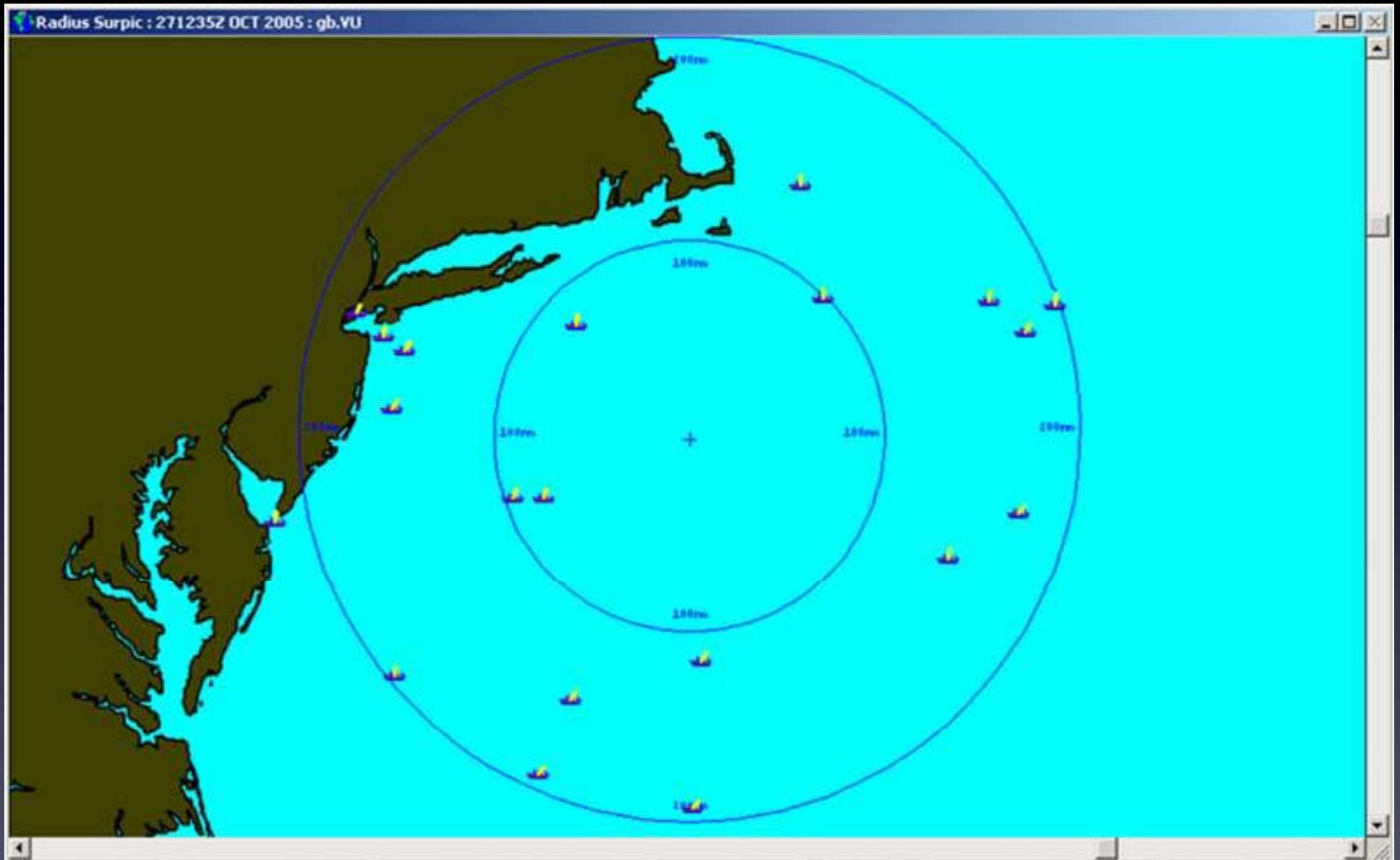
How does Amver work?

- Ship owners or managers enter specific information about their vessels into the Amver database
- Prior to sailing, participating ships send a sail plan to the Amver computer center. Vessels then report their location every 48 hours until arriving at their next port of call

How does Amver work?

- Search and rescue controllers are able to predict the position of each ship at any point during its voyage
- The position of each participating ship is displayed in an Amver surface picture
- In an emergency, any rescue coordination center can request this surface picture to determine the position of Amver ships

What is a surface picture?



What is a surface picture?

VoyInfo – AMVER Lloyds Report

The screenshot displays the VoyInfo software interface with several data windows overlaid on a map background. The windows contain the following information:

- Lloyds Vessel Data:**
 - Lloyds #: 9082348
 - Name: APL TURQUOISE
 - Call Sign: 9VYV Flag: SNG
 - Inmarsat #: 456394010 MMSI #: 563940000
 - Old Name: N O L Turquoise
 - Ship Type: CONTAINER SHIP
 - Cargo Type: Cont. Fixed guides
 - Hull ID: 386408 Built: 199603
 - Length: 294.1 m Gross: 52086
 - Width: 32.3 m DWT: 60323
 - Draft: 12.8 m Speed: 24.5
 - Spd Ind: Service Screws: 1
- AMVER Vessel Data:**
 - Lloyds #: 9082348
 - Vessel Name: APL TURQUOISE
 - Call Sign: 9VYV Flag: SNG
 - Inmarsat #: 456394010 Speed: 21.4
 - Medic: SAR Medic:
 - Draft: 12.8 m Speed: 24.5
 - Radio Watch: Radio: CMET
- Owner Information:**
 - Lloyds #: 9082348
 - Name: APL BERMUDA LTD
 - Phone: +65 6278 9000
 - Fax: +65 6272 4200
 - Telex: 22682nepman
 - Web Address:
 - E-mail Address:
 - Reg. Nat: Bermuda
 - True Nat: Singapore
 - Address: c/o Neptune Shipmanagement Services (Pte) Ltd (NSSPL) 07-00, NOL Building, 456, Alexandra Road, Singapore, 119962
- VOYINFO Search Criteria:**
 - Search Criteria: Vessel Name Lloyds # Call Sign Satellite
 - Search Text: 9VYV
 - Report Type: AMVER/Lloyds Voyage Info Report Info

What is a surface picture?

Surpic Vessel Summary

USCG AMVER SURPIC II - [Radius Surpic : 021955Z FEB 2009] UNCLASSIFIED

AMVER Map Distances Boundaries Help

38°21'09"N 068°29'48"W


Surpic Vessel Summary

AMVER Radius Surpic

Date: FEB 02, 2009
Time: 19:55 Z

Sort By:

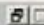
- Call Sign
- Vessel Name
- Hours to Intercept
- Distance to Intercept
- Flag
- Rep Medical
- Satellite

Info  Vessel Count: 19

Call Sign	Vessel Name	Position	Hrs	Dst	Crs	R	S	
		Lat. Long.	Int	Int	Var	F1	M M	Inmarsat
KABP	MAERSK OHIO	40°27'N 070°24'W	002	0042	056	USA		
SFQG	DON PASQUALE	40°27'N 071°41'W	003	0049	138	SWD		426544110
OYNM2	TORM HORIZON	40°32'N 072°37'W	006	0083	165	DIS		
NJUY5	ENERGY CHANCELLOR	40°27'N 069°22'W	006	0079	152	IOM	N	
LAUWS	SUEZ MATTHEW	42°18'N 070°16'W	006	0082	108	NIS		
9VCU2	GARV PREM	39°11'N 071°30'W	008	0113	137	SNG		456551311
ELYI2	ALICE OLDENDORFF	40°57'N 068°49'W	009	0096	073	LIB		463681010
ZCAM9	A. V. KASTNER	41°55'N 068°29'W	009	0123	038	BER	N	1823302
ICKF	VALTELLINA	39°21'N 072°51'W	010	0134	057	ITL		424702146
C6PQS	FEDERAL POLARIS	40°09'N 068°39'W	010	0117	074	BAH	N N	1320147

Small Icons

Save Print Display OK

AMVER  Connect to AMVER Vector Chart: USA

Who participates in Amver?

- Any commercial vessel, regardless of nation or flag, over 1,000 gross tons on a voyage of 24 hours or greater is encouraged to enroll and participate in Amver
- Other ships such as research vessels, private yachts, and fish processing vessels can also enroll

Who participates in Amver?

er Freeman

Nathaniel B. Palm

Rainier

Alkor

ames Clark Ross

Sikuliak?

Professor Albre

Fairweather

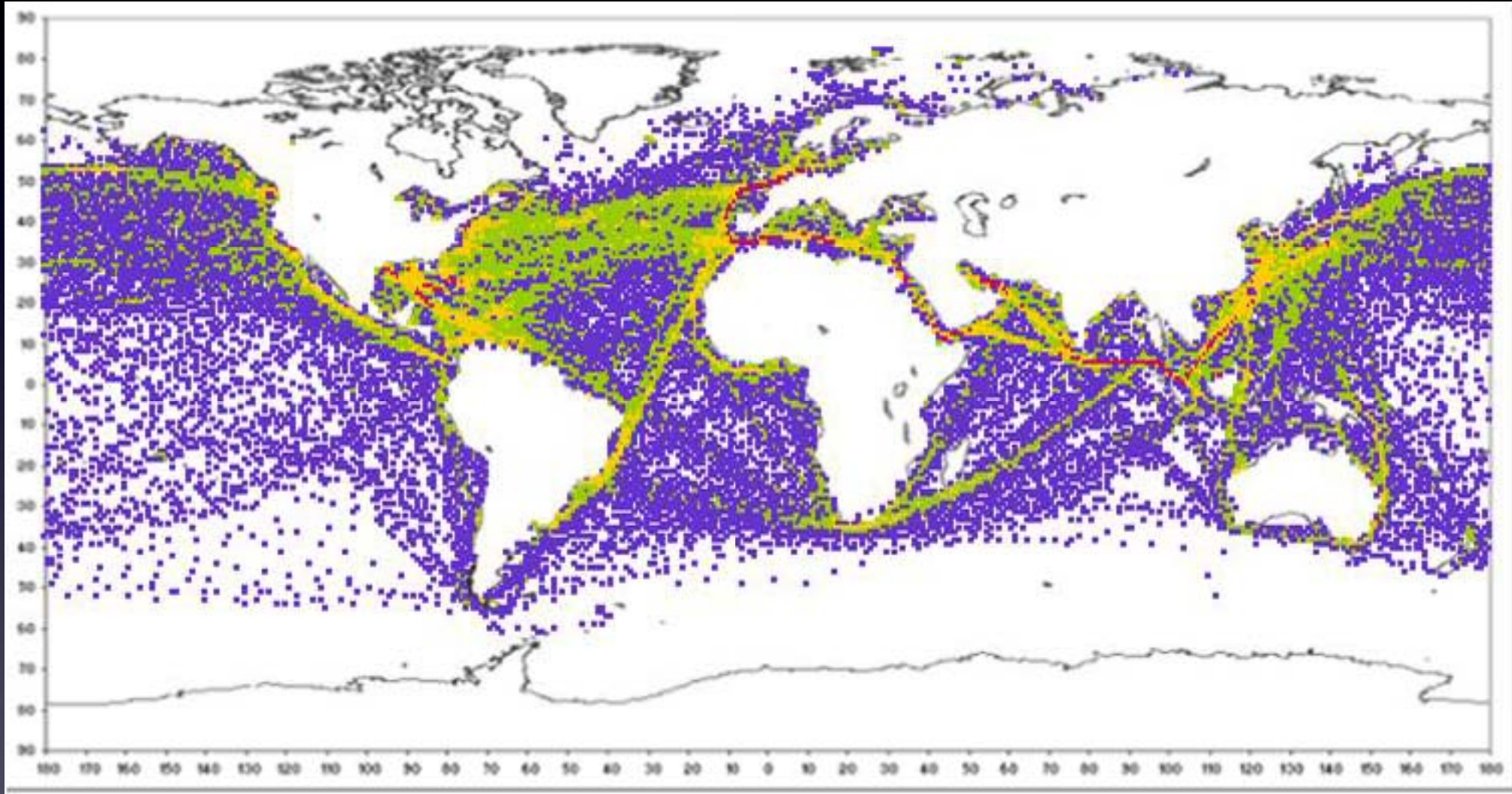
Geo Atlantic

Oscar Elton Se

lemik Sergey Vabvilov

Mirai

Who participates in Amver?



Is Amver successful?

were 237 lives saved in 2009



95 people in 2010



International Access

Amver.com - Automated Mutual-Assistance Vessel Rescue System - Request a SURPIC - Windows Internet Explorer

http://www.amver.com/surpicrequest.asp

File Edit View Favorites Tools Help

Amver.com - Automated Mutual-Assistance Vessel Re...

United States Coast Guard
U.S. Department of Homeland Security

Contact Us | Site Map | FAQs | Phone Book

Home Careers Units Missions Doing Business About Us

Amver Home
SURPIC Request
Enrollment
Participation
Amver Reports
Ship Reporting Manual
Awards Program
SURPIC
Statistics
Amver/SEAS
Amver History
Amver Bulletin Archive
News Archive
Site Map
Business Reports
Certificate Count
Density Plots

Request Amver SURPIC for SAR Operation(s)

Required fields are indicated in red (with *)

Contact Information*:

*Name of Point of Contact *E-mail

*Organization *Phone Number

Fax Number

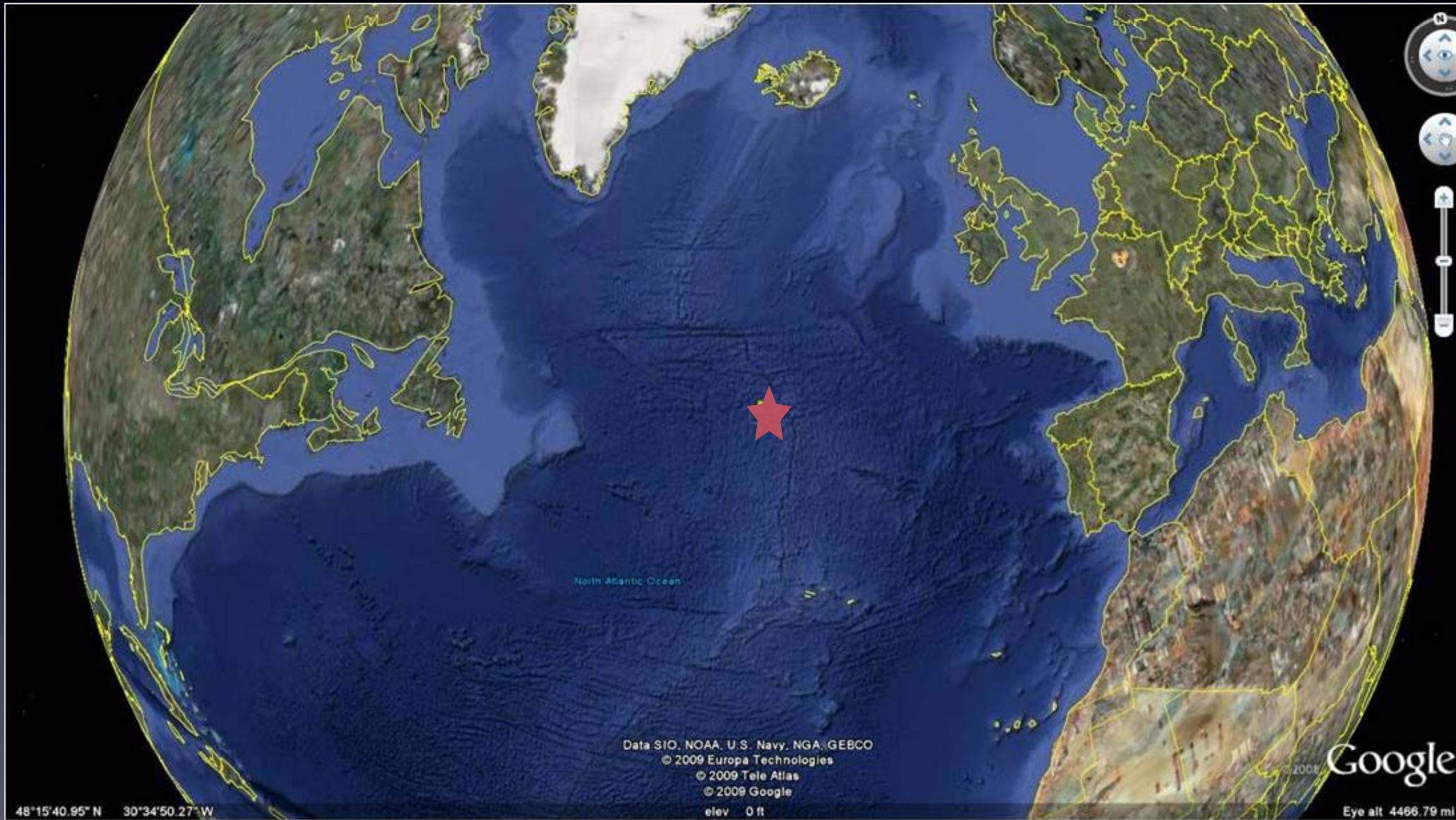
Nature of Distress*:

Fire
 Flood
 Capsized
 Man Overboard
 Other

Date of Distress:

Internet 100% Desktop 10:11 AM

MRCC Falmouth request Amver data for stranded rower in August 2009



Case Study

RS James Cook diverted to rescue the row



Join The Club

Simply visit www.amver.com and click on “enr

can begin sending position reports immedia

Amver Maritime Relations



- website: <http://www.amver.com>
- blog: <http://www.amveruscg.blogspot.com>
- twitter: <http://twitter.com/amver>
- facebook: <http://www.facebook.com/amver>

Amver Maritime Relations

Benjamin Strong

1 South Street

USCG Battery Park Building

New York, NY 10004

USA

(212) 668-7762

benjamin.m.strong@uscg.mil

