

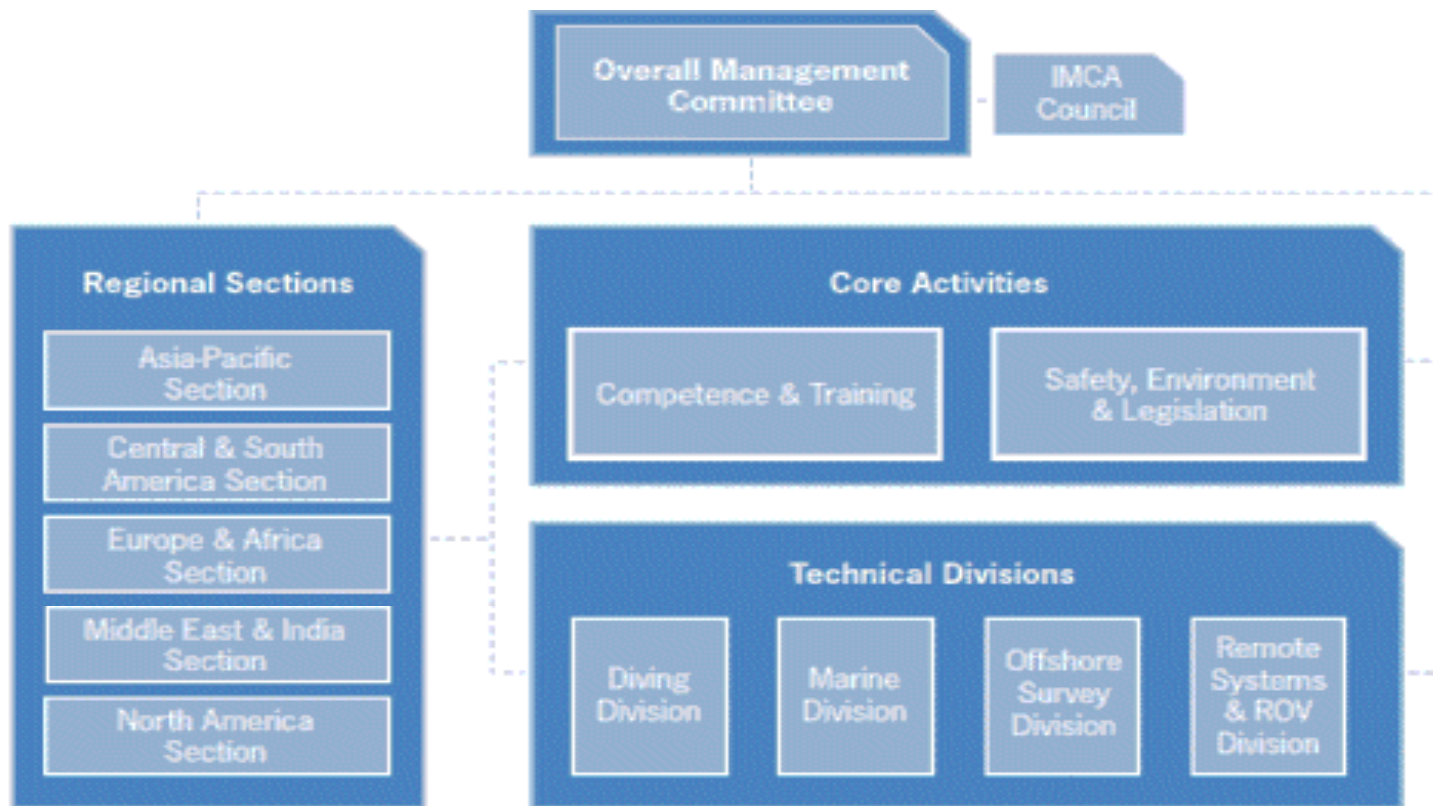


The International Marine Contractors Association

- International association representing offshore, marine and underwater engineering companies.
- 490 companies in more than 50 countries
- <http://www.imca-int.com>

IMCA Structure

IMCA operates via a number of committees which meet quarterly to direct and progress the association's work on behalf of members.



Common Marine Inspection Document (CMID)

Clients request audits of vessels that they wished to contract. These audits can be both time-consuming and expensive; and many operators were struggling with the demands placed upon them. The CMID aims to reduce the number of audits carried out on individual marine vessels through the adoption of a common auditing standard for the offshore industry

www.imcaint.com/documents/divisions/marine/docs/IMCAM149.pdf

IMCA M 149 Issue 7

- The latest Issue of CMID
- The R/V Pelican was inspected using “Supplement to IMCA M 149 Issue 7 Gulf of Mexico Vessels Revision 1”
- 200 Question Yes, No or N/A Inspection
- Inspector was completed 3rd Party

Points of Interest

- Confined Space Entry policy
- Lifting operations- cranes
- Working at Heights- 2 meters
- Permit to Work- defined scope of work
- Marine Trash and Debris Awareness
- Job Risk Assessments
- Lifting Equipment- certified straps
- Lockout Tagout- elec. and hyd. lockout

Observations and Close out Register

- P1- **High Priority** -Immediate Corrective Action
- P2- **Medium Priority** -Action Reasonably Convenient
- P3- **Low Priority** - Future Consideration

