

IMO Resolution A.1024(26)

Adoption of Mandatory Code for ships
operating in the polar waters.

Background

- 2002 IMO adopted “Guidelines For Ship’s Operating in Polar Waters”
 - 2007 IACS adopted “Guidelines For Vessels Operating in Polar Waters”
 - The 32nd session of the IMO Assembly (XXXII) was held in London from 6 to 17 April 2008. It adopted a resolution on shipping in polar waters (Resolution A.1049(27)).
 - IMO Resolutions:
 - Polar e... system... MARP...
 - Update... change...
- Other “guidelines”
- ABS Guide For Vessels Operating in Low Temperature Environments
 - Canada’s Arctic Shipping Pollution Prevention Regulations
 - Lloyd’s Register Winterization Rules
 - Germanischer Lloyd Guidelines for the Construction of Polar Class Ships
 - DnV Arctic Rules
 - BV Rules for the Classification of POLAR CLASS Ships
 - Etc....
- (ATCM states, from mandatory waters
- on ship AS and
- regulatory

Current

- Moving forward with development of mandatory code per IMO Resolution A.1024(26)
- Receiving input from many nations currently involved with polar regions – bordering countries – interested countries
- Input from organizations such as Greenpeace, WWF
- NSF is tracking progress – Matt Hawkins
- USCG has the lead for United States

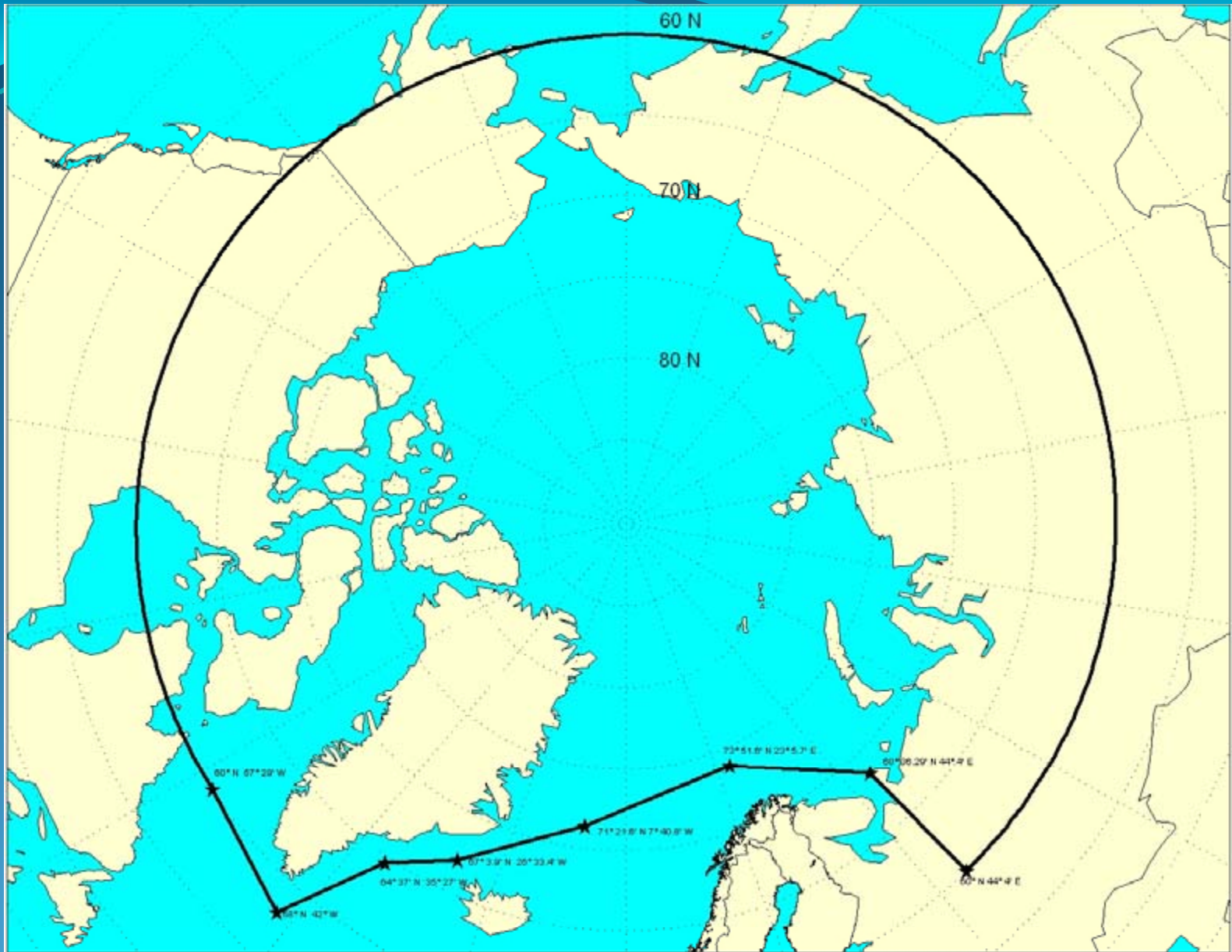
Potential Impact

- Structure
 - IACS Polar Rules
- Subdivision and stability
 - double bottom
 - probabilistic stability analysis
- Machinery
 - icing sea chests
- Fire Safety
 - heating
 - freezing temperatures
- Accommodations
 - deep shelter
 - galley equipment
- Life-saving equipment
 - covered lifeboats
- Safety of navigation
 - reporting
 - fiber optic gyro
- Environmental protection
 - no pollutants against skin
- Additional spares and equipment
 - more depth, survival gear
- Specialist crew
 - ice navigator certification

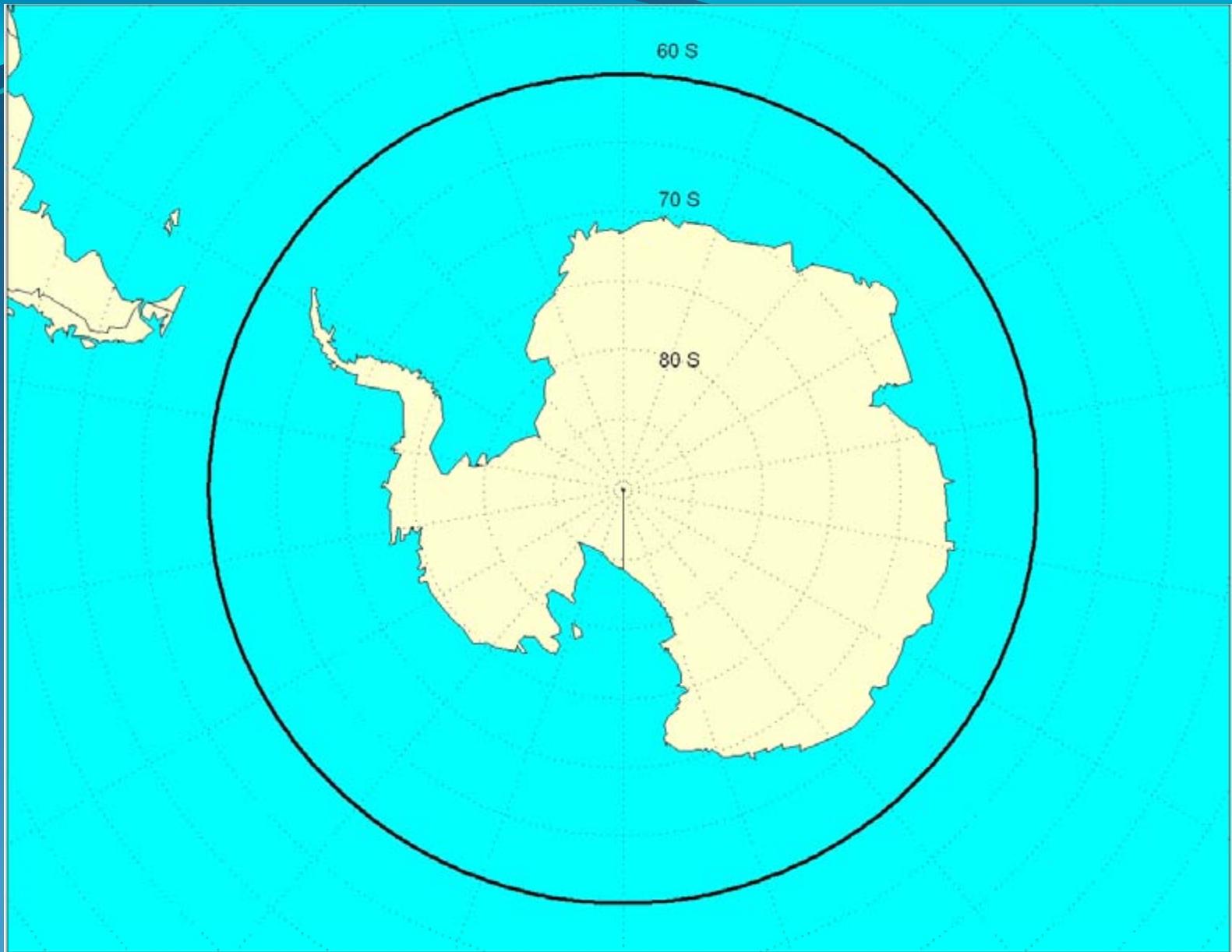
Areas of Coverage

Arctic waters means those waters which are located north of a line extending from latitude $58^{\circ}00' .0$ N, longitude $042^{\circ}00' .0$ W to latitude $64^{\circ}37' .0$ N, longitude $035^{\circ}27' .0$ W and thence by a rhumb line to latitude $67^{\circ}03' .9$ N, longitude $026^{\circ}33' .4$ W and thence by a rhumb line to Sørkapp, Jan Mayen and by the southern shore of Jan Mayen to the Island of Bjørnøya and thence by a great circle line from the Island of Bjørnøya to Cap Kanin Nos and thence by the northern shore of the Asian continent eastward to the Bering Strait and thence from the Bering Strait westward to latitude 60° N as far as Il'pyrskiy and following the 60th North parallel eastward as far as and including Etolin Strait and thence by the northern shore of the North American continent as far south as latitude 60° N and thence eastward along parallel of latitude 60° N, to longitude $56^{\circ}37' .1$ W and thence to the latitude $58^{\circ}00' .0$ N, longitude $042^{\circ}00' .0$ W.

Antarctic waters means those waters which are south of 60° S



Maximum Extent of Arctic Waters Coverage



Maximum Extent of Antarctic Waters Coverage