

GEOTRACES SYSTEM UPDATE

- First voyage completed on Knorr in July 2008
- Design completed & modifications were made to Knorr in March 2009:
 - Stanchion added in Thruster Room to increase support to Trawl Crane Crutch
 - Strengthening of Trawl Crane Crutch
- Transition foundation between winch and deck designed & fabricated
- 2009 Voyage successfully completed in May

GEOTRACES SYSTEM UPDATE

- 2010 GEOTRACES scheduled for Oct on Knorr
- Over-boarding method being changed to a portable A-Frame packaged with the winch
- Design for all Global AGORs is complete
- Proposals were received 14 April, anticipate contract to be awarded week of 19 April
- Attempting to have the new over-boarding system available for October 2010 sailing date

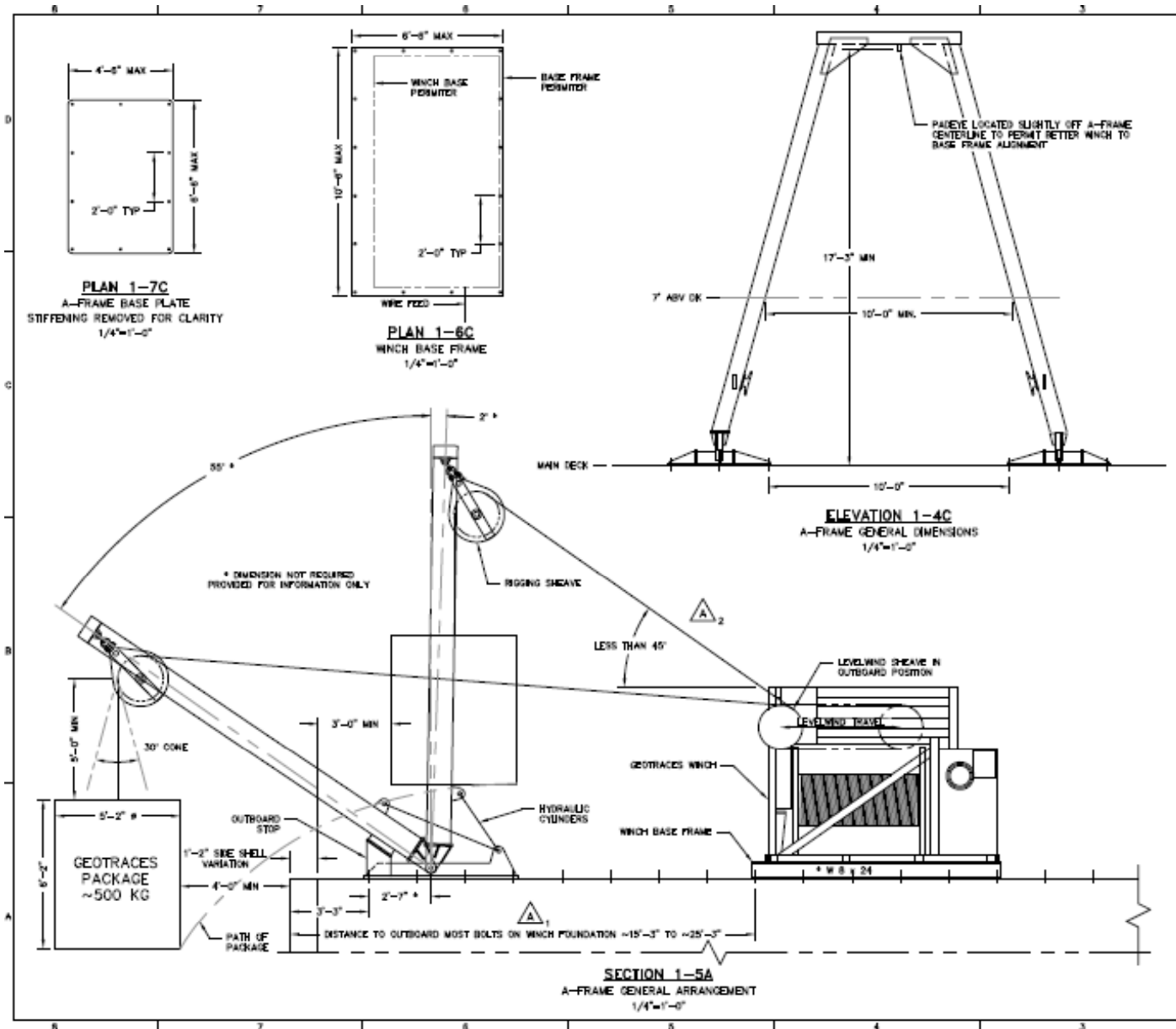
Proposed Over-Boarding System



BILL GREENE/GLOBE STAFF

Karen Stamieszkin of the Provincetown Center for Coastal Studies, held at the ankles by Lee Reeve, leaned into the water to collect a zooplankton sample as Charles Mayo kept an eye out.

GEOTRACES Over-Boarding Layout



Fleet Broadband Operating Project

SHIP	Operating Status	SHIP	Operating Status
Atlantis	√	Melville	√
Knorr	√	Revelle	√
Oceanus	√	New Horizon	√
Sharp	√	Sproul	√
Cape Hatteras	√	Endeavor	√
Atlantic Explorer	√	Thompson	√
Wecoma	√	Langseth	√
Point Sur	√	Walton Smith	√
Palmer	√	Savannah	Antenna Received but not installed
Gould	Antenna Received but not installed	Clifford Barnes	Antenna Received but not installed

Fleet Broadband Operating Project

- **FBB Workshop held in Woods Hole May 2009**
- **New 3 Year Operating Program Implemented January 1, 2010:**
 - **Data bandwidth established at 480 Gigabytes per year @ \$1.52/MB rate. This is use or lose for ea yr of agreement**
 - **Phone charges are in addition to fixed billing for data:**
 - **FBB to Fixed phone or other Inmarsat sys: \$1.08/minute**
 - **FBB to cell: \$1.32/minute**
 - **2 Stage Calling Shore to Ship established to manage cost:**
 - **To Iridium: \$1.94/minute vs. \$9 to \$12/minute**
 - **To FBB: \$1.63/minute vs. \$9 to \$12/minute**

Fleet Broadband Operating Project

- **Need to integrate FBB System into operational use**
- **At this point, only 15 GB of the annual 480 GB pool has been used**
- **Used 3% over 25% of year**
- **2nd & 3rd Quarter will be key period of usage**
- **Focus on getting last 3 systems installed**
- **Recent activity to increase use:**
 - **Integrating FBB System into shipboard networks**
 - **Converting all voice calls through data ports VoIP**