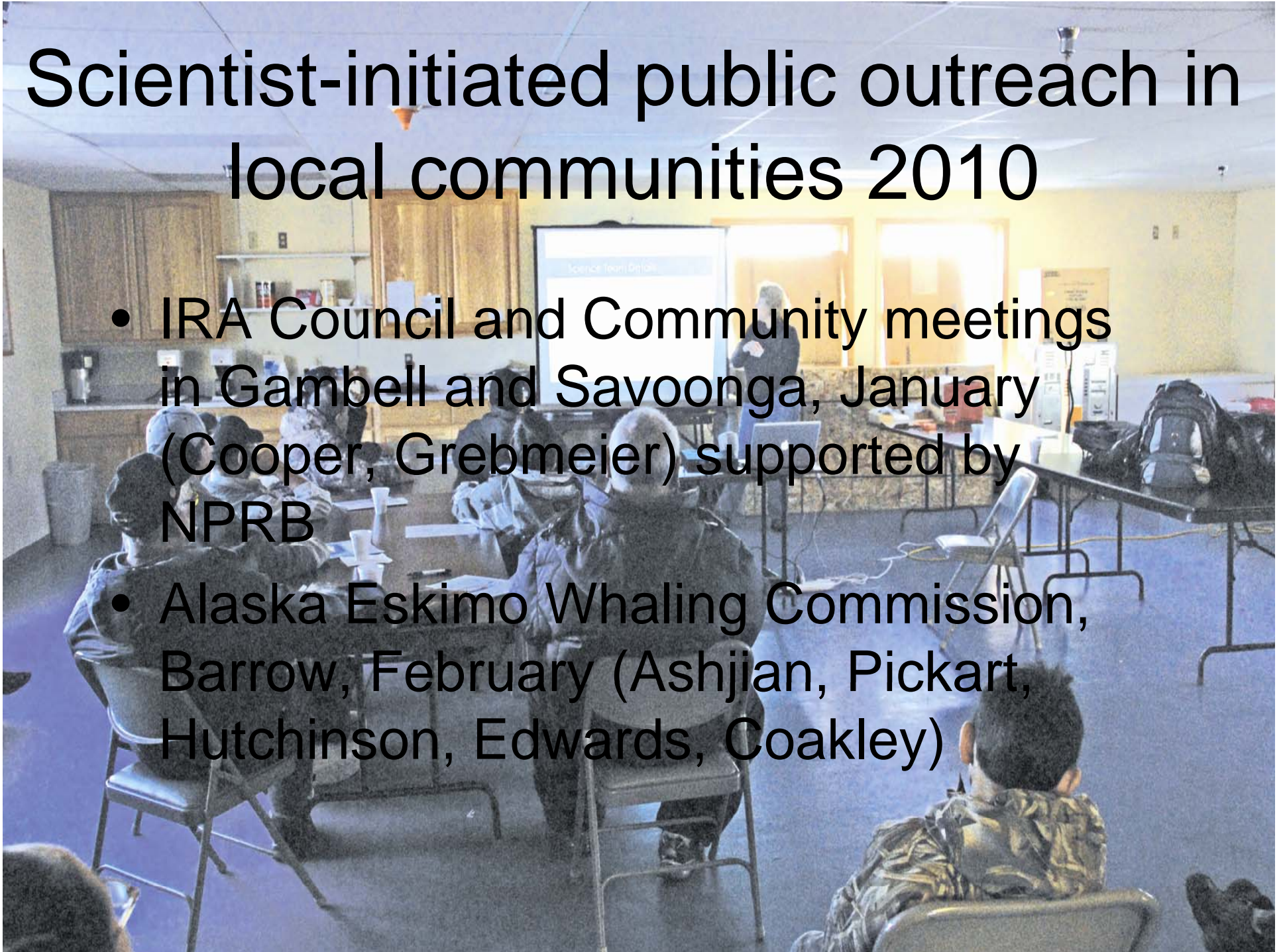


Scientist-initiated public outreach in local communities 2010

- IRA Council and Community meetings in Gambell and Savoonga, January (Cooper, Grebmeier) supported by NPRB
- Alaska Eskimo Whaling Commission, Barrow, February (Ashjian, Pickart, Hutchinson, Edwards, Coakley)





25 residents of Savoonga Alaska (population ~750) listening to past scientific results and plans for March 2010 icebreaker cruise





25 residents of Savoonga
Alaska (population ~750)
listening to past scientific
results and plans for March
2010 icebreaker cruise

88,698 people in Calvert
County
= 2957 people to have
similar rate of community
interest



AEWC Meeting

February 10, 2010 - Barrow, AK

- Research plans presented:
 - Ashjian (Pickart/Ashjian Cruise on Polar Sea (now on Healy)
 - Pickart (NASA Cruise on Healy)
 - Hutchinson/Edwards (ECS Cruise on Healy)
 - Coakley (Coakley Seismic Cruise on Healy, now delayed)
- Presentations followed one by D17 CG regarding last year's activities in the Arctic and their plans for 2010 (CAPT Carl Uchytel, CDR Michelle Webber)
- Attendance was coordinated together with the AEWG executive director (Janice Meadows), AEWG legal counsel Jessica Lefevre and Earl Comstock, Carin Ashjian, and LCDR Greg Somers. Greg was most helpful in insuring that the CG and the scientists presented on the same day and in sequential time slots.

Near Future Assistance for Foreign Flag Cruises in 2010

Informal assistance being provided by US International Arctic Science Committee representative Jackie Grebmeier as part of efforts for internationally coordinated sampling at distributed biological observatories

Korea: Identification of potential local polar bear guards for on-ice work

Canada: Identification of local contact points on St. Lawrence Island and on North Slope

