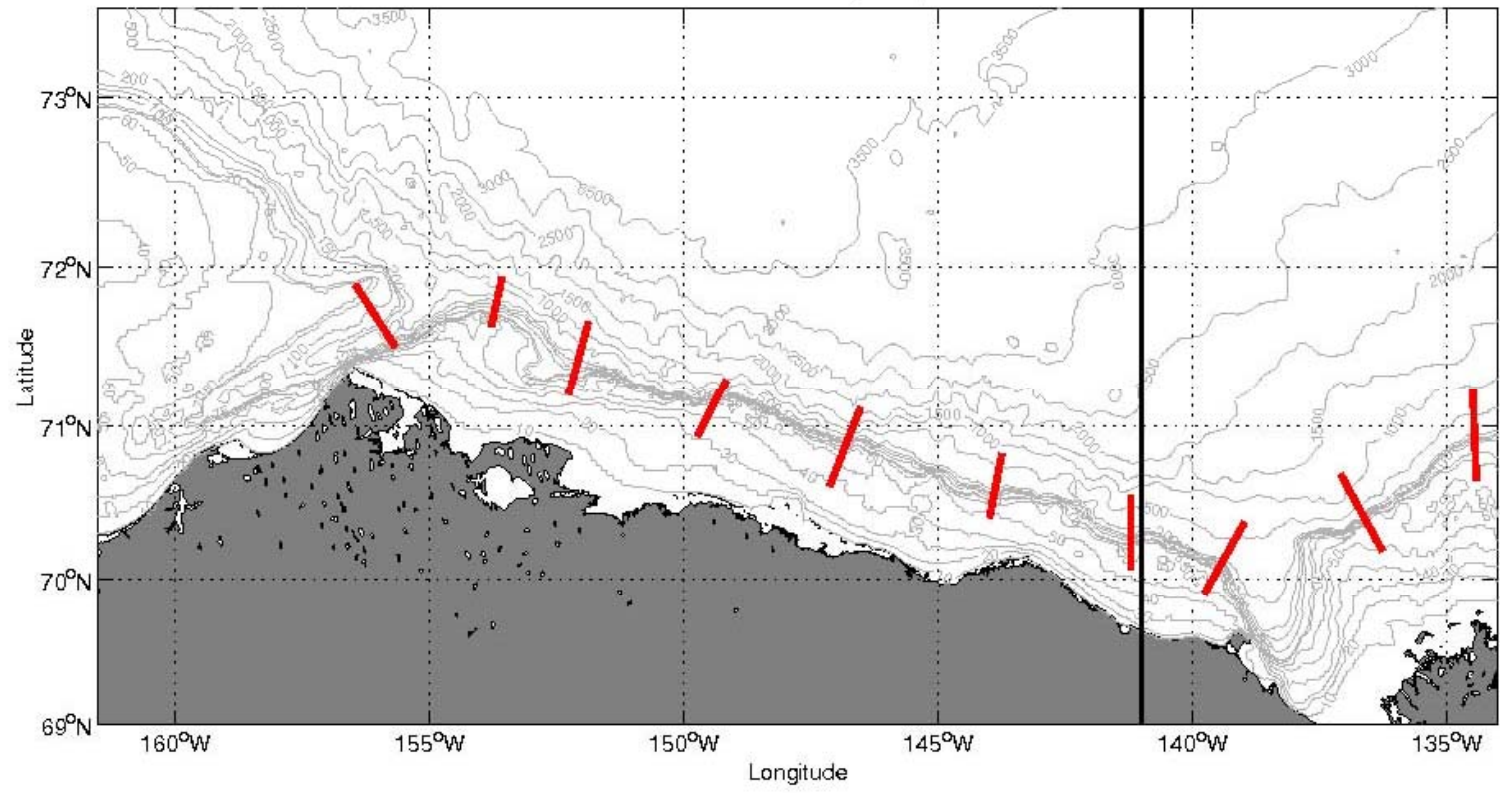


Possible CTD sections on Healy September 2010



HEALY 2011 Funded UNOLS Requests

Agency(s)	Begin/End Navy Op	Start Date	Science Days	Number Scientists	Start/End Port	Ancillary Facility(s)	Instrumentation
NASA	NP02 NP03	9/1/2011	30	40	None/None	Other AUV	Radioisotope use - briefly describe, Vans (3)
NSF/OPP	AR06	9/1/2011	26	20	Barrow/Sattelle	Portable MCS/SCS group	Multibeam, Seismic
NOAA/OAR	AR07 AR12	8/10/2011	39	35	Barrow/Barrow	Other AUV, Large Gravity Core, Helicopter Ops (USCG), Jason	Dynamic Positioning, Multibeam, Seismic, Dredging/Coring/Large Dia. Trawl Wire, Vans (1)

Healy 2011

- **Jun/Jul- Pickart moorings- 14 days**
 - May have to use Polar Sea due to early season?
- **Jul/Aug- NASA ICESCAPES- 30 days**
- **Aug/Oct ECS Mayer- Mapping- 47 Days**

Other funded science

Coakley- Polar Sea? Langseth? Other?

Healy Foreign Clearance 2010

- **HLY1001- Russia- Missed deadline**
- **HLY1002- Canada- Submitted**
- **HLY1003- Canada- Submitted**
- **Canada NW Territories-HLY1002**

<http://www.nwtresearch.com/>

Healy Van relocation on Bow

- Hav
- Ran
- USC



ess”