

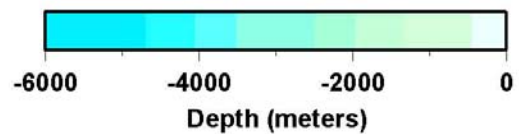
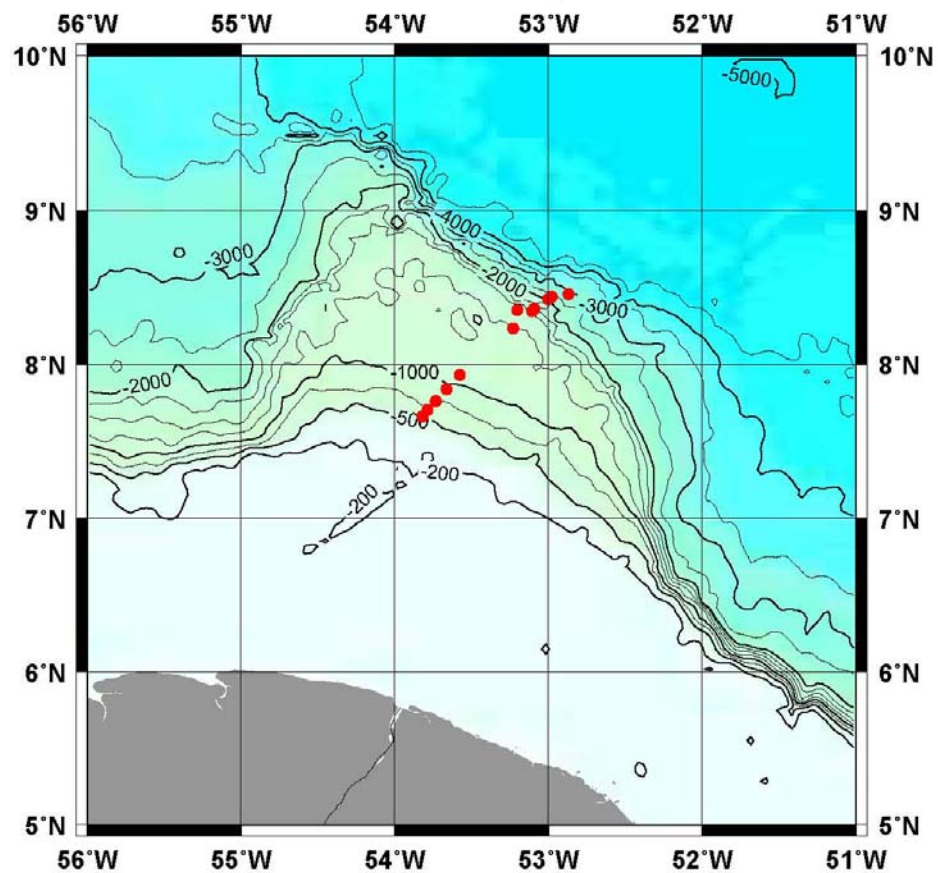


UNOLS Long Core Update

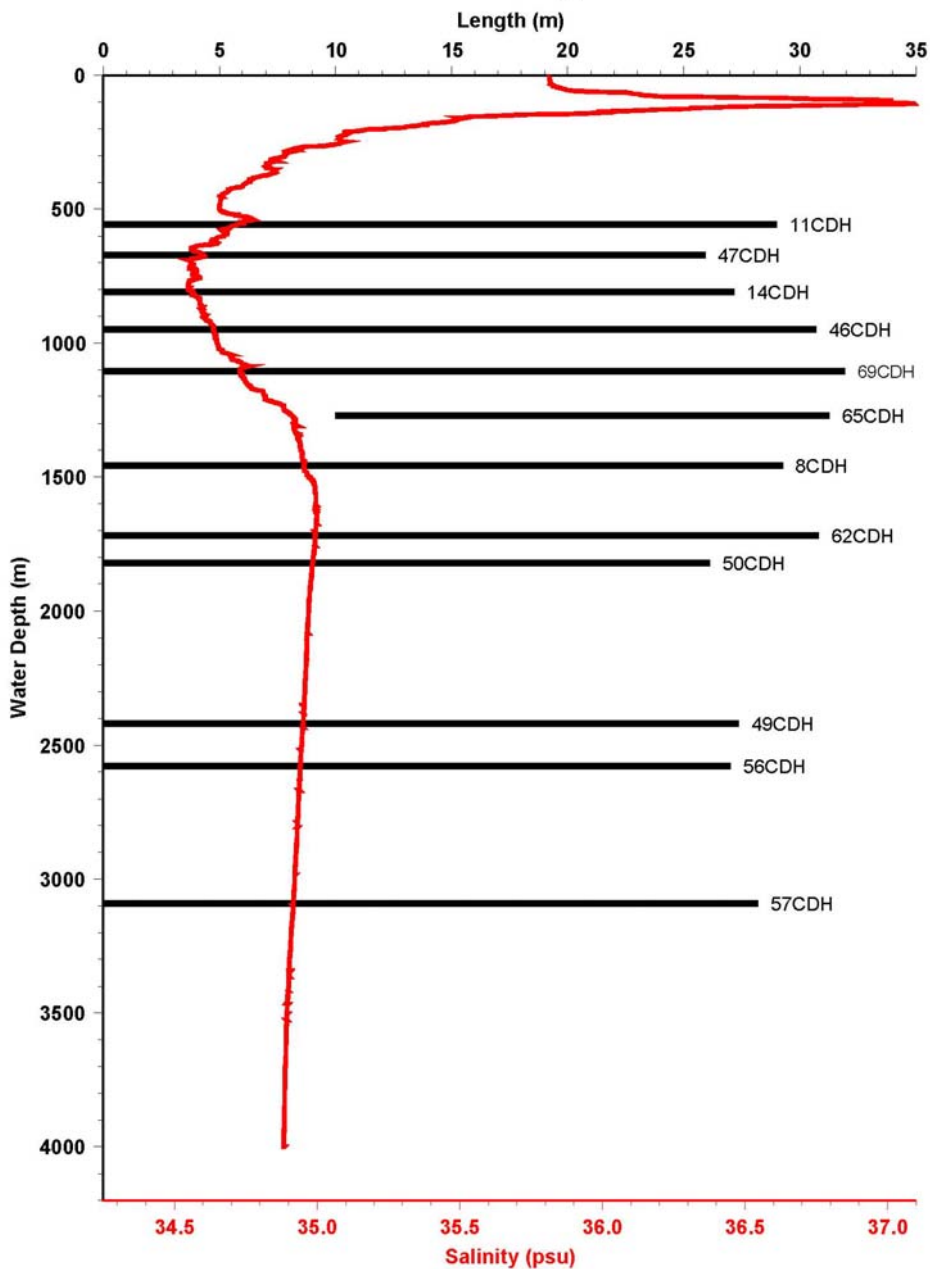
W. Curry
Woods Hole Oceanographic Institution

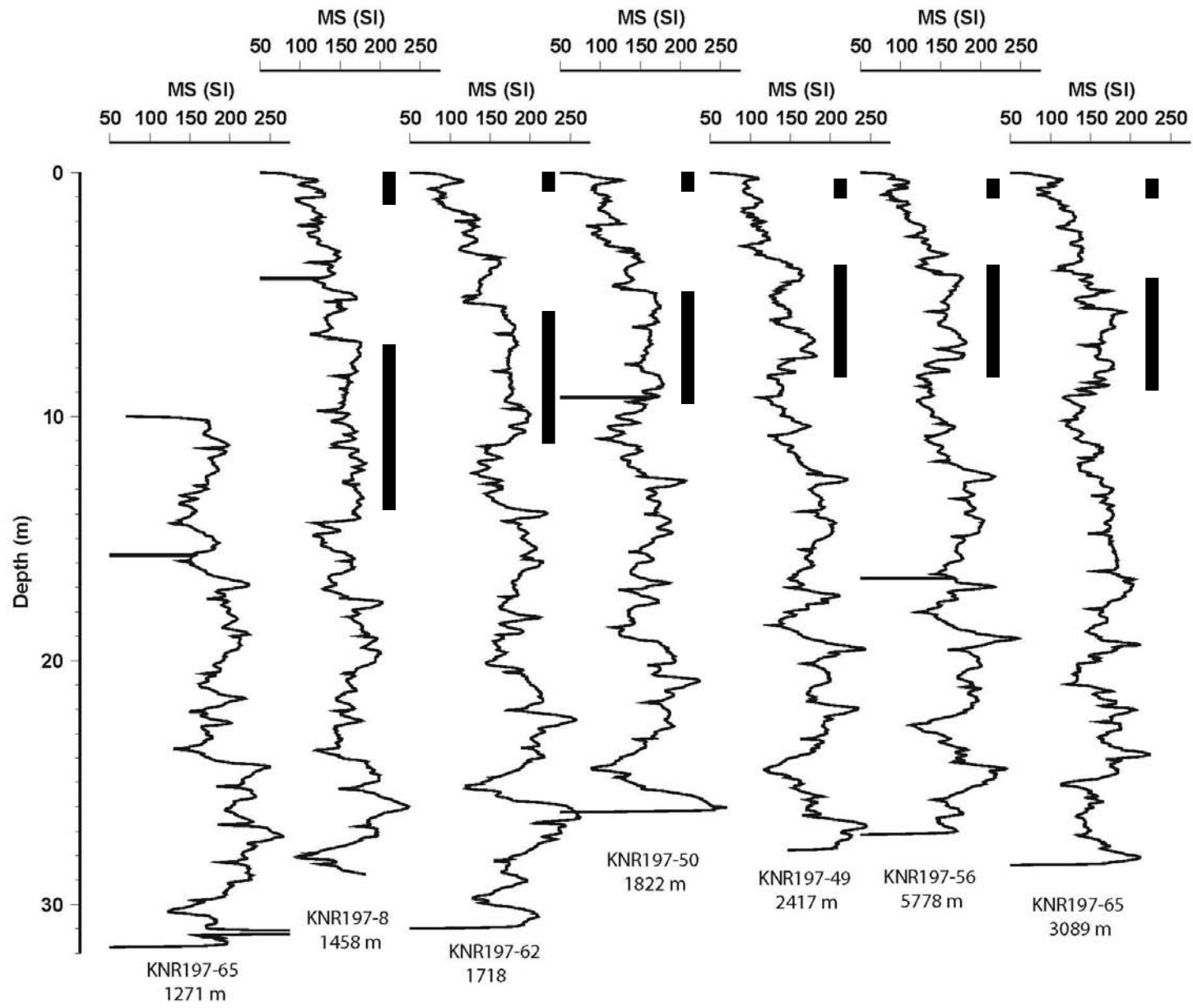
March 29, 2010

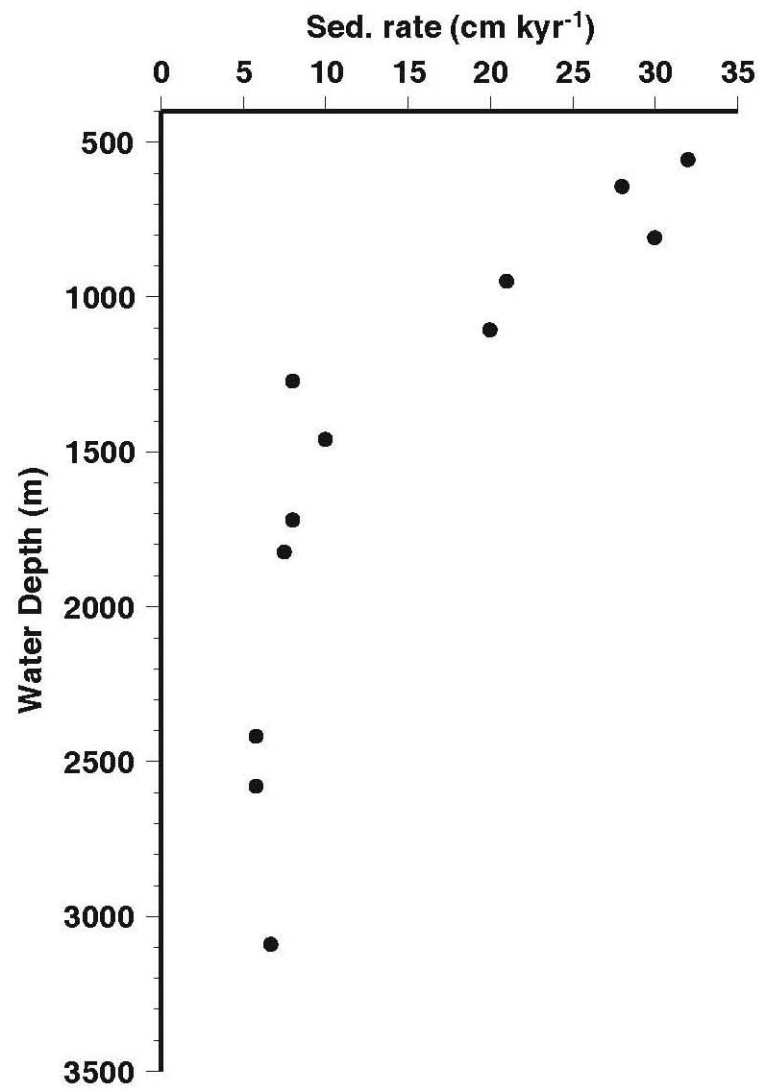
KNR197-3 Long Cores



KNR197-3 Long Cores

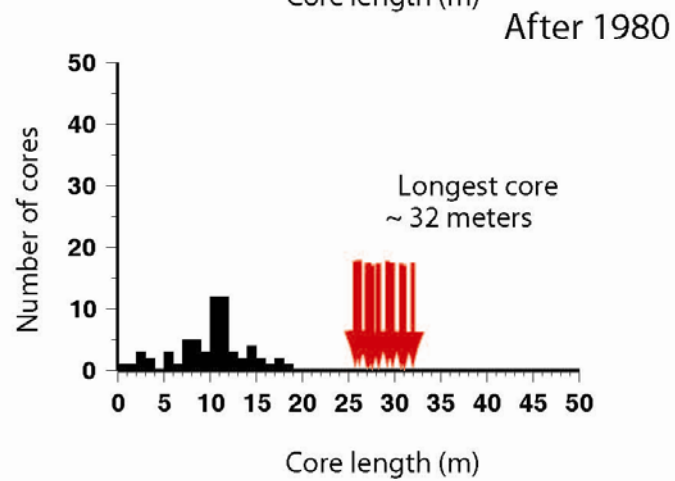
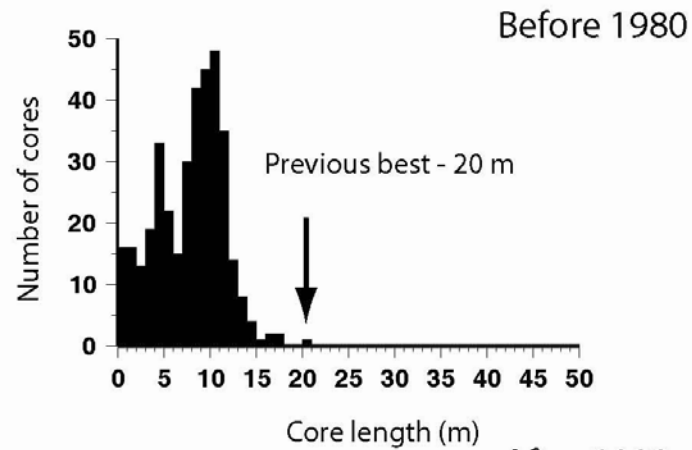






Demerara Rise

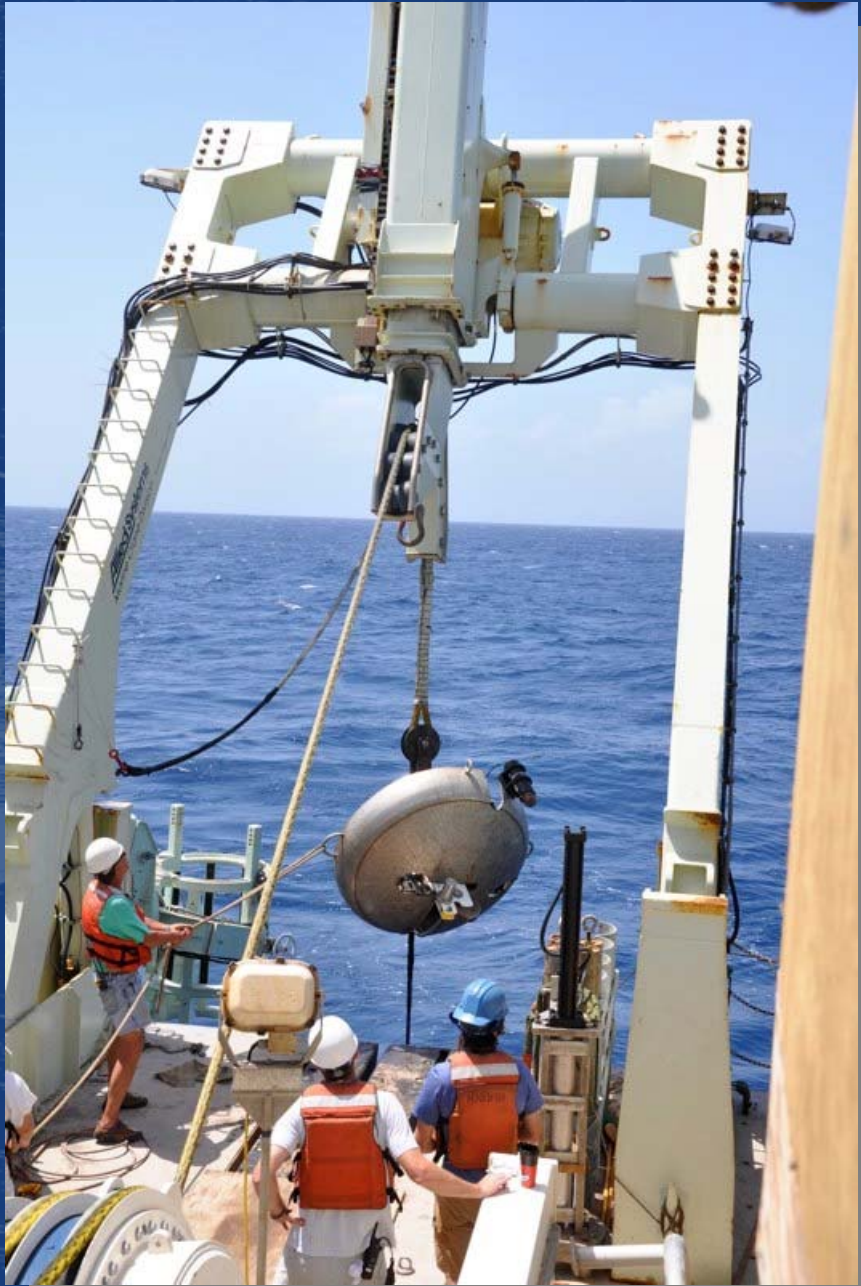
Equatorial Atlantic Cores 20 W to 80 W Curry and Oppo Cruise



Source: NGDC Index of Marine Geology Samples



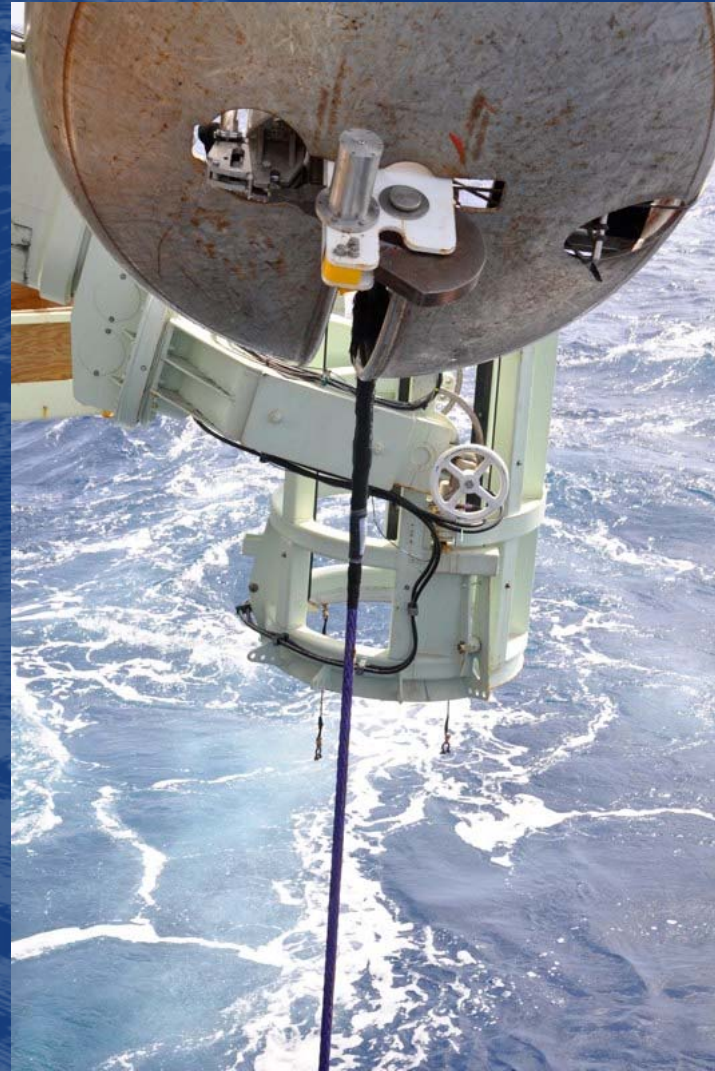
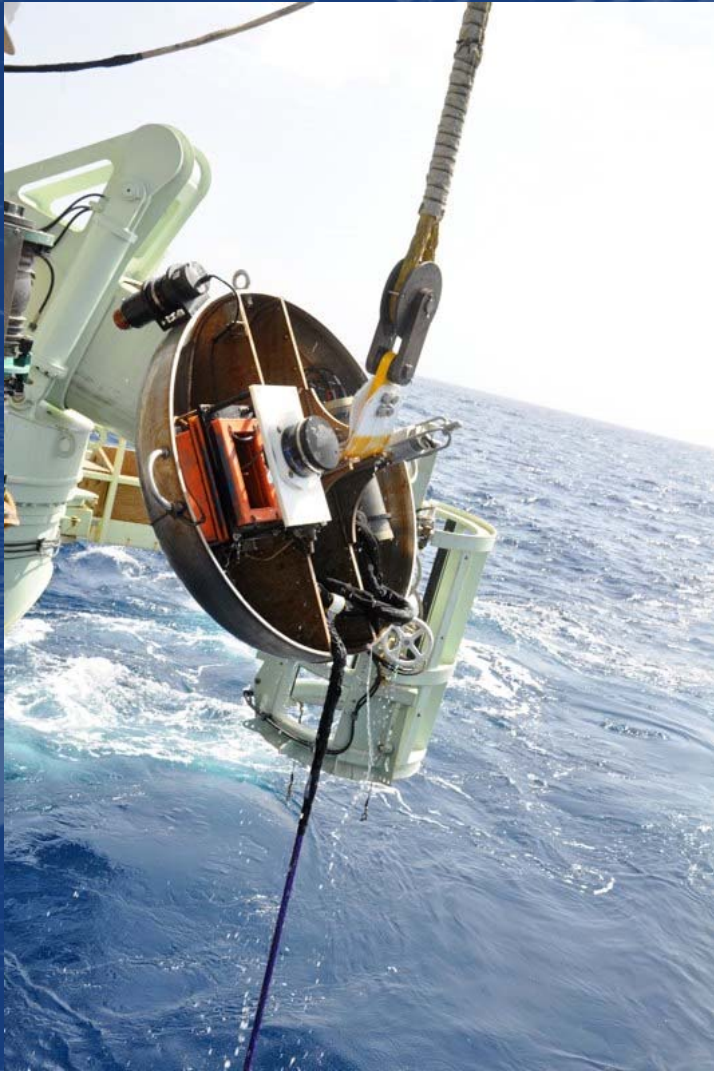




Tangled pendant
and acoustic
release

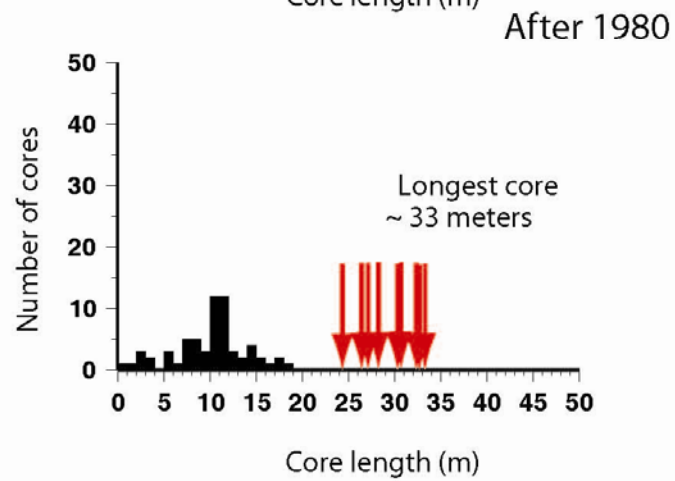
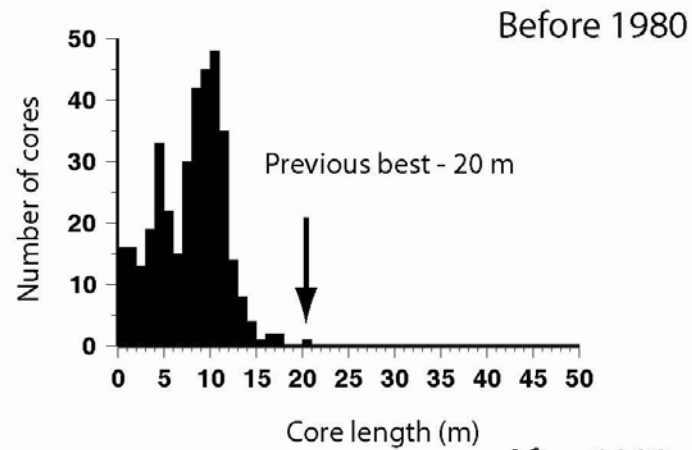
Recovery of the Acoustic Release







Equatorial Atlantic Cores 20 W to 80 W Baker Cruise



Source: NGDC Index of Marine Geology Samples