A wide-angle photograph of an Arctic icebreaker operation. The sea is filled with numerous ice floes of various sizes. In the foreground, a large, flat ice floe is visible. The sky is a pale, clear blue. The overall scene is bright and cold.

**ARCTIC ICEBREAKER
COORDINATING COMMITTEE
(AICC)**

**Report to UNOLS
Wednesday, 31 March 2010**

*Robin Muench
Earth & Space Research,
Seattle, WA*

Overall Summary of Past Year

- Significant member replacements due to departures and term expirations.
- Continued rapid increase in research in the Arctic.
- Icebreakers USCGC *Healy* and USCGC *Polar Sea* both presently actively supporting research.
- Repairs initiated on Icebreaker USCGC *Polar Star*, with estimated completion date of 2013.
- USCG District 17 continued focus on Arctic Domain Awareness activities, including research in the Beaufort and Chukchi seas.
- AICC continues to focus on interactions among USCG, research scientists, government agencies, international research projects, and Alaskan native groups.

USCGC *Healy* and USCGC *Polar Sea*, in the ice



Photo courtesy USCG

USCGC *Healy* 2009

Conducted four science missions:

- Two cruises in support of NSF-funded Bering Sea Ecosystem Study/Bering Sea Integrated Research Program (BEST/BSIERP).
- One cruise in support of NOPP and ONR-funded physical oceanographic programs on the Beaufort shelf.
- A second cruise in the Beaufort, jointly with the CCGS *Louis St. Laurent*, in support of NOAA-funded extended continental shelf (ECS) mapping.

Entered Todd Shipyard (Seattle) for maintenance and upgrades including installation of a new Kongsberg EM122 multibeam system.

USCGC *Polar Sea* 2009

Conducted two science missions:

- One cruise to the Beaufort Shelf in support of a project, funded jointly by NRL, DOE and the USGS primarily to map methane hydrates.
- A second cruise in the Beaufort Sea in support of an NSF-funded project to re-capture tagged polar bears.

Was on standby to support the Swedish icebreaker *Oden* during the early 2010 McMurdo breakout and resupply, however, her services were not required.

USCGC *Healy* 2010

Full complement of cruises following yard period:

- One cruise in support of NASA-funded research in the Bering and Chukchi seas.
- A second cruise as continuation, jointly with the CCGS *Louis St. Laurent*, of NOAA-funded 2009 ECS mapping work.
- A third and final cruise in support of NSF-funded research in the Beaufort Sea shelf-slope region.

USCGC *Polar Sea* 2010

- Currently (March 2010) at sea supporting the BEST/BSIERP spring cruise.
- Activities for the remainder of the 2010 season will consist of drydock maintenance followed by USCG-related activities.



Photos courtesy USCG

Arctic 2010

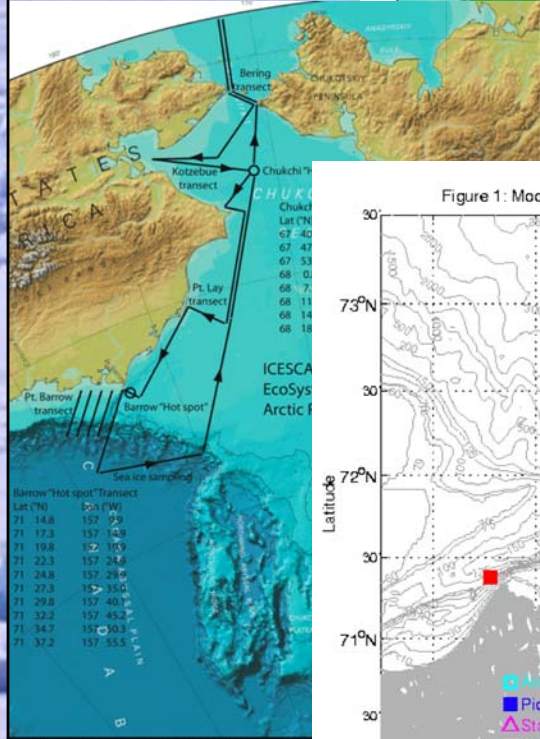
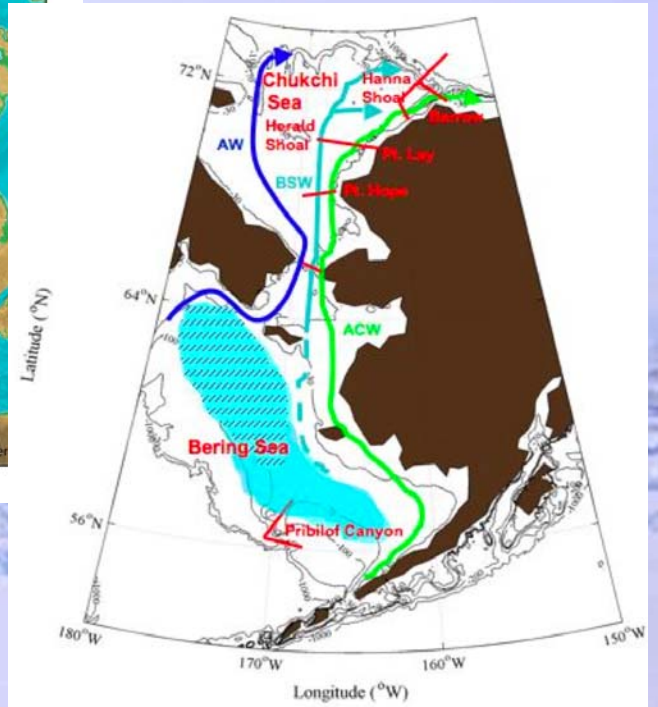
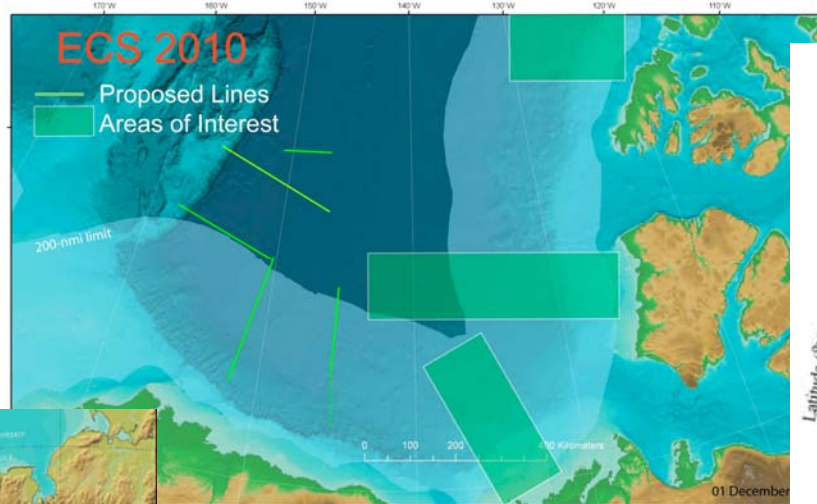


Figure 1: Mooring Operations on Polar Sea September 2010

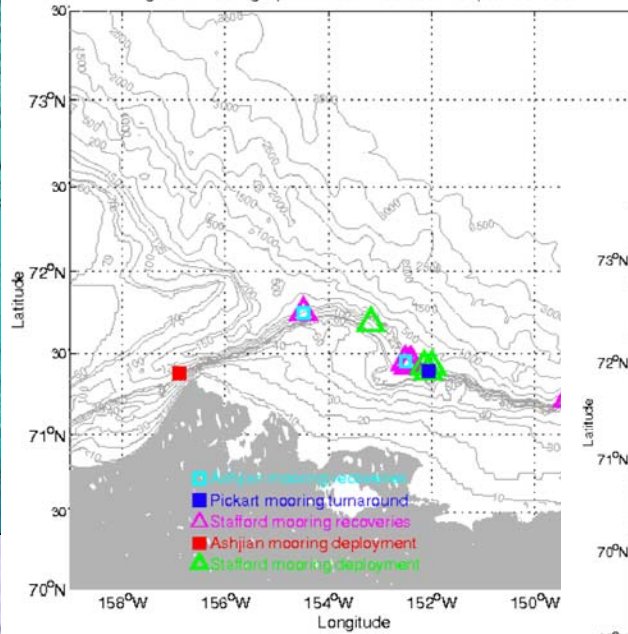
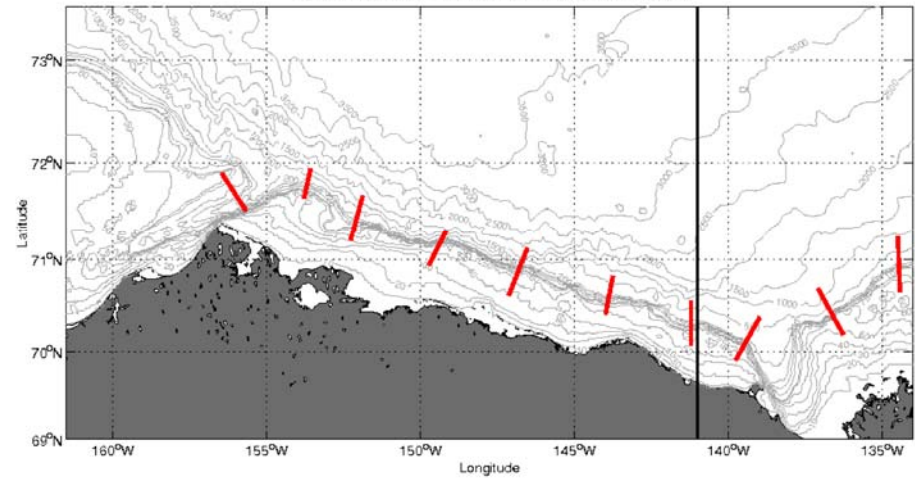


Figure 2: Possible CTD sections on Polar Sea September 2010



USCGC Polar Star 2010

Icebreaker docked in Seattle to be refitted for duty

The Coast Guard's top brass landed in Seattle Wednesday to announce the refitting of an old icebreaker, along with the need to act in the face of global climate change.

By **Mark Rahner**
Seattle Times staff reporter

The Coast Guard's top brass landed in Seattle on Wednesday to announce the refitting of an old icebreaker, along with the need to act in the face of global climate change.

Standing on the deck of the cutter Polar Star at the U.S. Coast Guard base on Pier 36, Adm. Thad Allen described the ship's \$62 million facelift as well as what he said was "a clarion call for action regarding ocean policy, regarding climate change and regarding what's going on in our Arctic."

Commissioned in 1976, the 399-foot Polar Star has been on ice, as it were — that is, docked in "caretaker status" to save money — since its last mission in 2006. In 1982 it circumnavigated Antarctica, the first ship to do so since 1843. It's one of only three U.S. icebreakers — all based in Seattle — and all three are necessary to patrol Alaska's Arctic coastline, do research in the Arctic and Antarctic and deal with emergencies, according to the National Research Council.

Allen said the overhaul will start at Seattle's Todd Shipyards within the next several weeks and result in 250 new local jobs. After being rebuilt from the inside out, the ship will be back at sea in 2013 and used until about 2020.

◀ PREV 1 of 2 NEXT ▶



[enlarge](#)

MARK HARRISON / THE SEATTLE TIMES

The Polar Star, based in Seattle, is one of the nation's two Polar Class icebreakers.

Courtesy The Seattle Times



END

Photo courtesy USCG