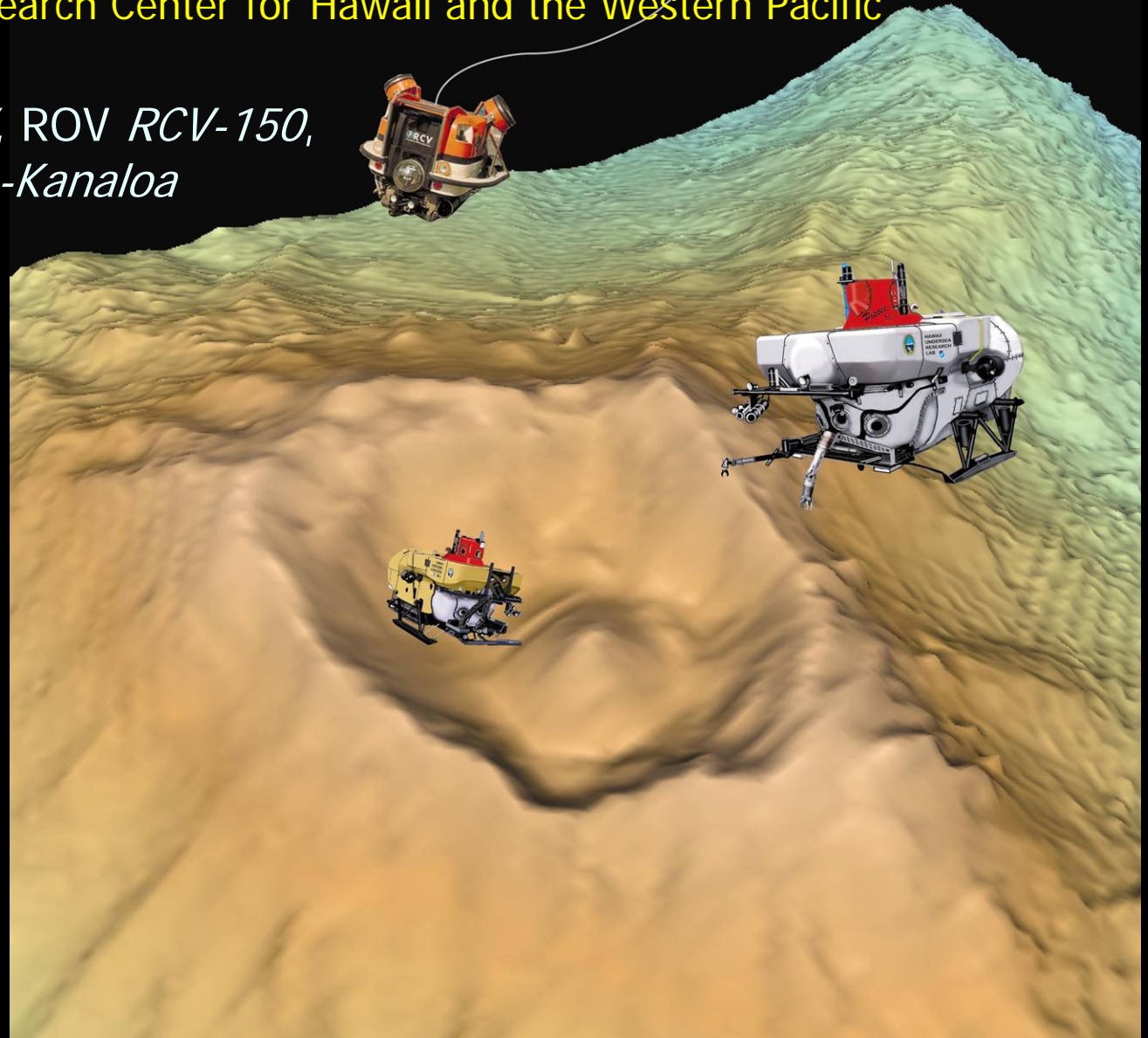


# Hawai'i Undersea Research Laboratory

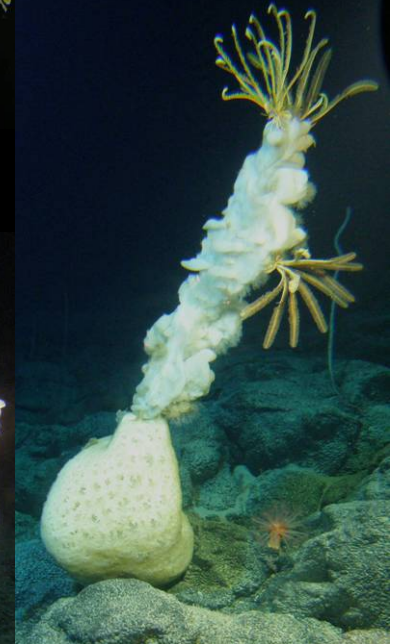
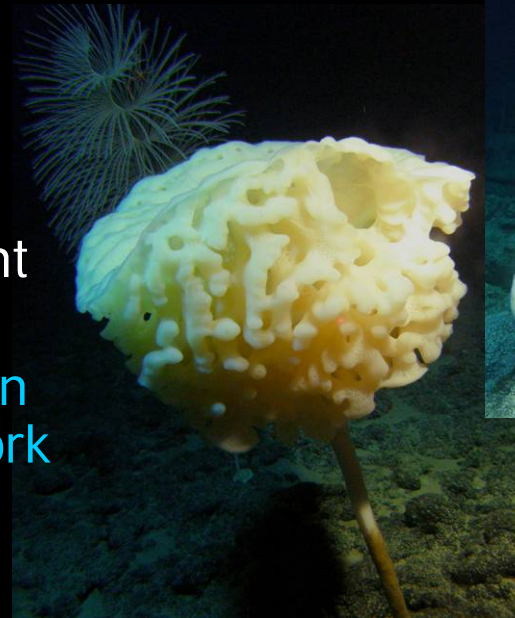
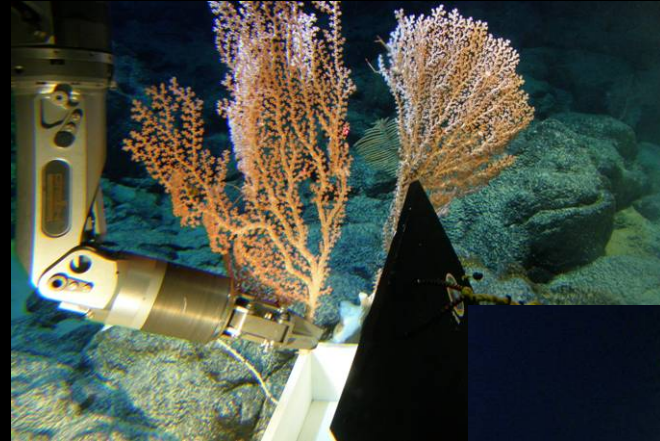
NOAA's Undersea Research Center for Hawaii and the Western Pacific

HOVs *Pisces IV & V*, ROV *RCV-150*,  
and R/V *Ka'imikai-o-Kanaloa*



# HURL activities for 2009-2010

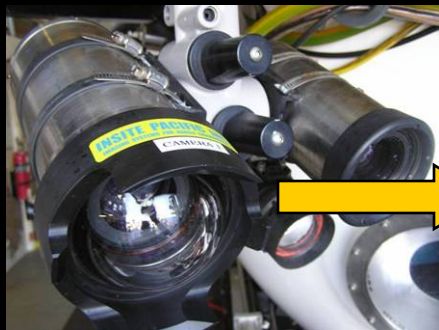
- Major refit for support ship R/V *KoK* in 2008 was completed
- Dive program in Feb-April 2009, in Main Hawaiian Islands including chemical and conventional munitions studies (40 *Pisces*, 18 ROV)
- Refit *Pisces IV* and ABS recert, May-Oct 2009 (Refit *Pisces V* in 2010)
- Full time, full resolution High Definition tapeless video system operational, standard PI product is now disk drive
- Dive program, Nov-Dec 2009, Main Islands, Papahānaumokuākea Monument (15 *Pisces*, 4 ROV)
- National Geographic and Nova Television specials on HURL Marine Archeology work
- Dive program, Jan 2010, Main Islands (10 *Pisces*, 9 ROV)





# New Capabilities

HD Video from mini-Zeus camera is recorded with Convergent Design's Flash XDR then transferred to hard drive



- Full High Definition (HD) Recording
- New arrangement with NSF to support highly ranked science projects using the PISCES submersibles

# HURL in late 2010-2011

- 2010: Main and Upper Northwestern Hawaiian Islands including Papahānuamokuākea Monument, Southern Emperor Seamounts. RFP released Nov. 2009
- 2011: Return to the Line Islands and the SW Pacific (Samoa to Tonga to NZ along the Kermadec Arc volcanoes) including the new monuments
- Presently seeking more funding partners for both

